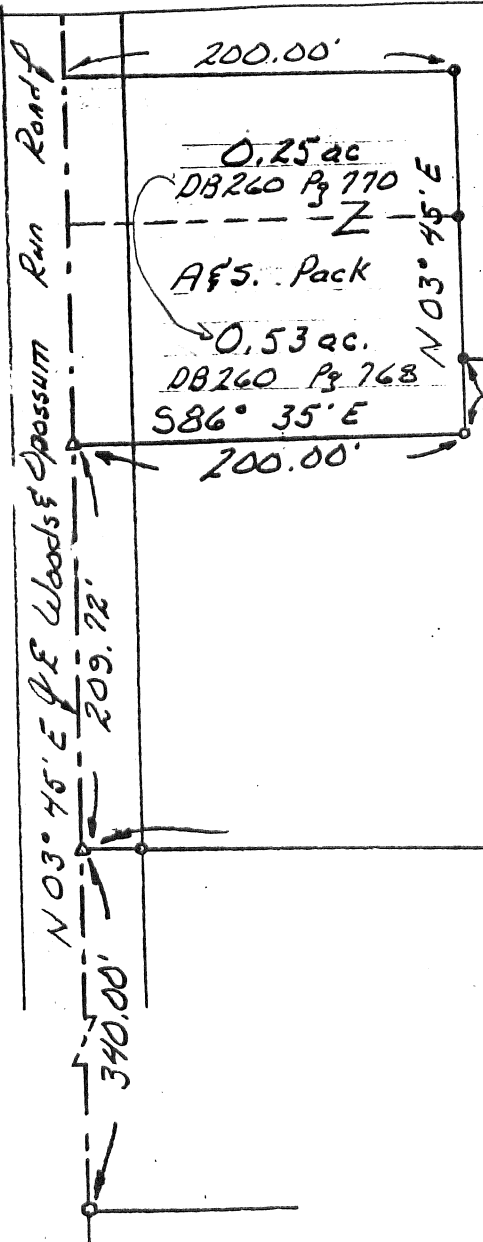
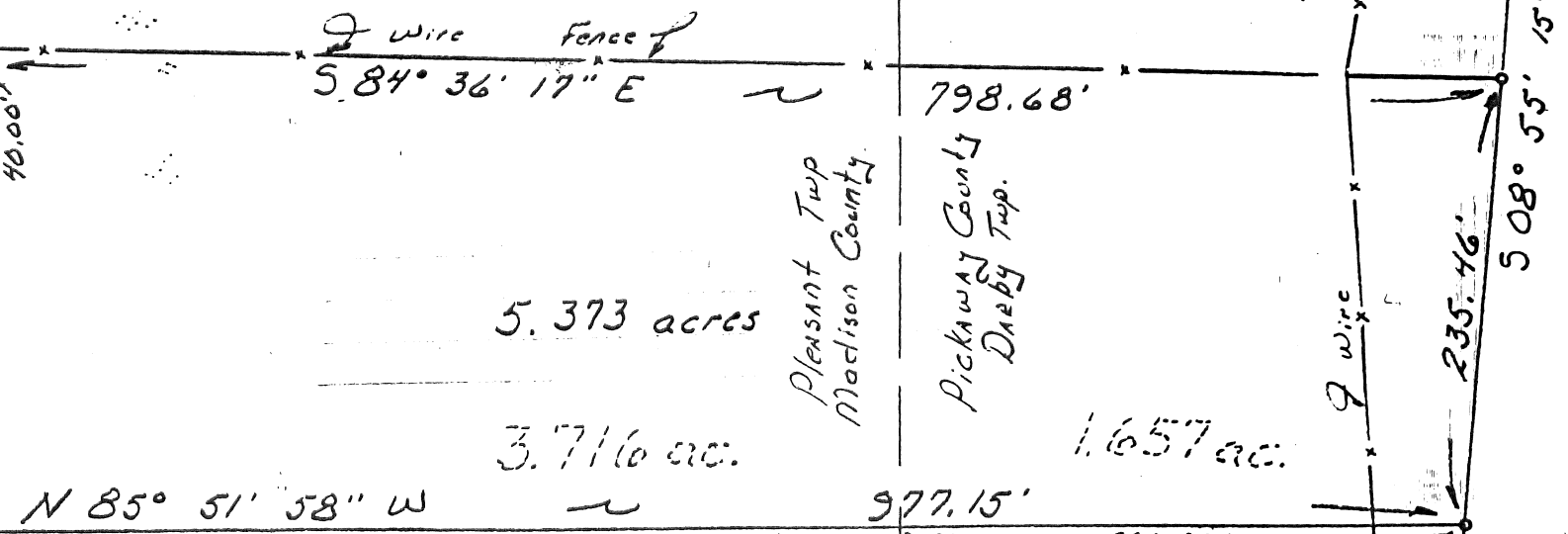


Robert Wright TR.
20 ac
DB 181 Pg 392



Kathryn Smith
14.38 ac.
DB 270 Pg 249 Madison Co.
O.B. 297 Pg 479 Pickaway Co.

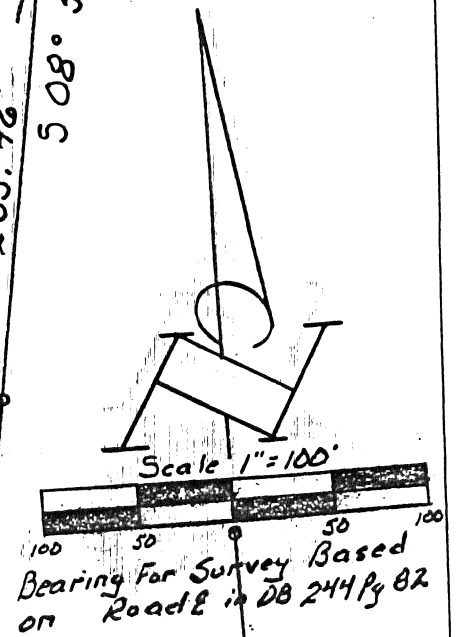
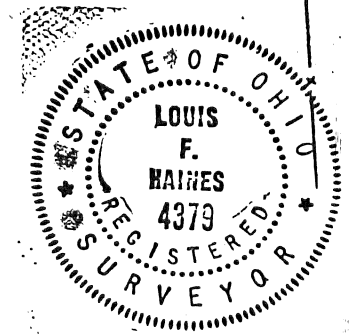
Wm Weiner
41.735 ac.
228/488



Eva M. Clark
7.236 ac.
DB 244 Pg 82 Madison Co.
DB 262 Pg 228 Pickaway Co.

Survey of 5,373 acres
in VMS 9270, in Madison & Pickaway
Counties, Ohio; for

Eva M. Clark



I hereby certify that the plat shown hereon was performed from an actual field survey, under my supervision and that said plat correctly represents said survey.

DATE: Jan. 12, 1987. SIGNED: Louis F. Haines



LOUIS F. HAINES
SURVEYOR
354 KESSLER ST. PHONE 837-2181
GROVEPORT, OH 43125