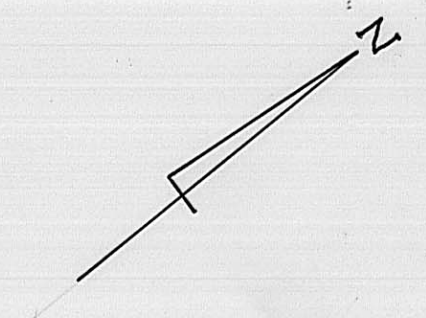
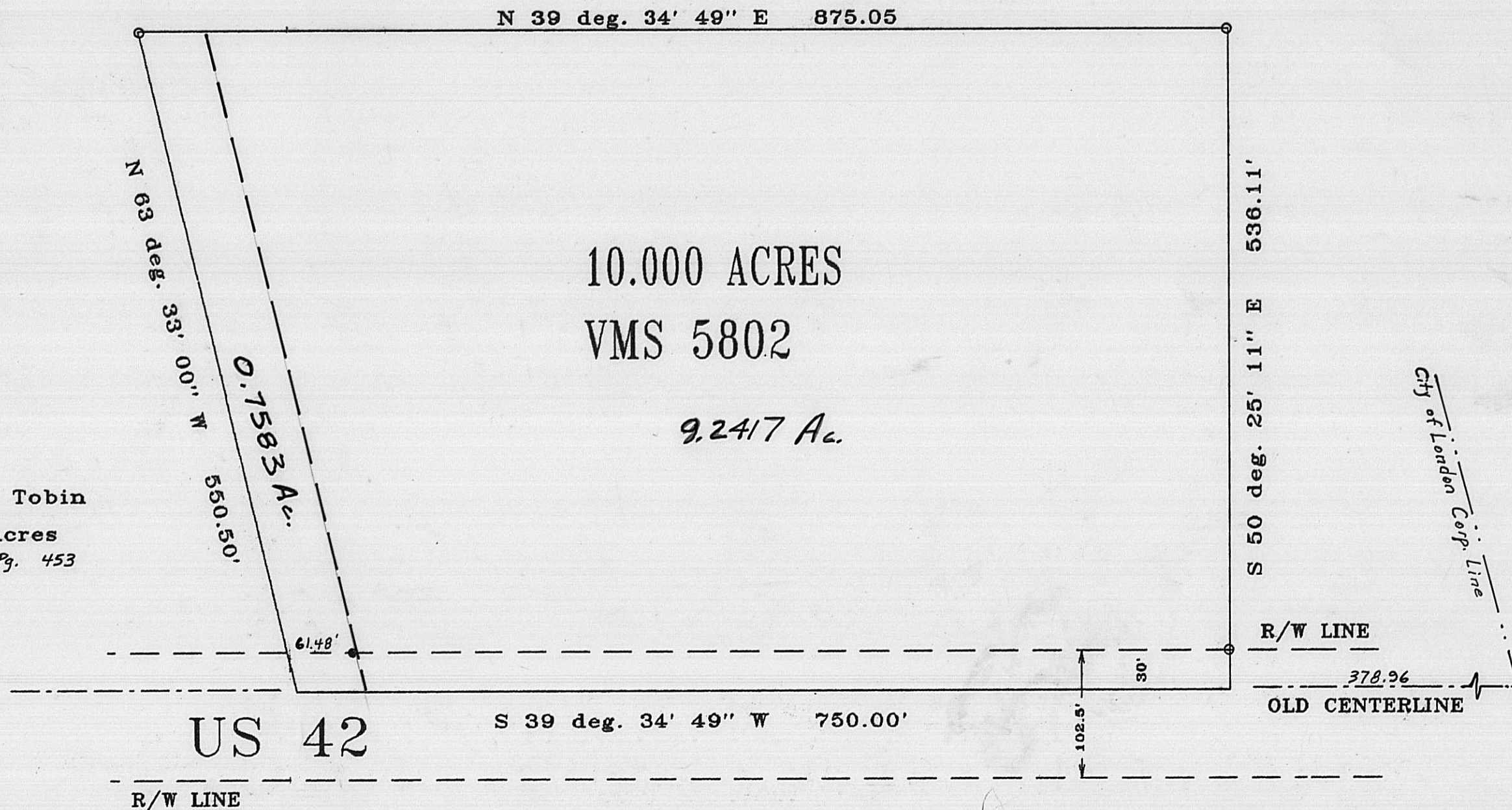


GRANTOR: Frank B. & Janet L. Sollars, D.B. 250, Pg. 693 and D.B. 239, Pg. 161
 LOCATION: VMS 5802, City of London, Madison Co.
 ACREAGE: 10.000 acres out of a 97.237 ac. and 50.00 ac. tract



● indicates iron pin found
 ○ indicates iron pipe set



CERTIFICATION

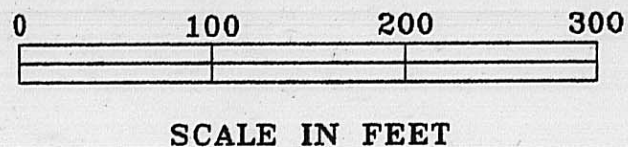
I hereby certify that the hereon platted parcel was surveyed to acceptable survey standards and that the linear error in closure does not exceed 0.02 feet.

Roger E. Thompson
 Roger E. Thompson, PS #6552

Daniel L. Tobin
 9.677 acres
 D.B. 271, Pg. 453



THOMPSON SURVEYING
 2005 DEER RUN LANE
 LONDON, OHIO 43140



AUGUST, 1988

25-89