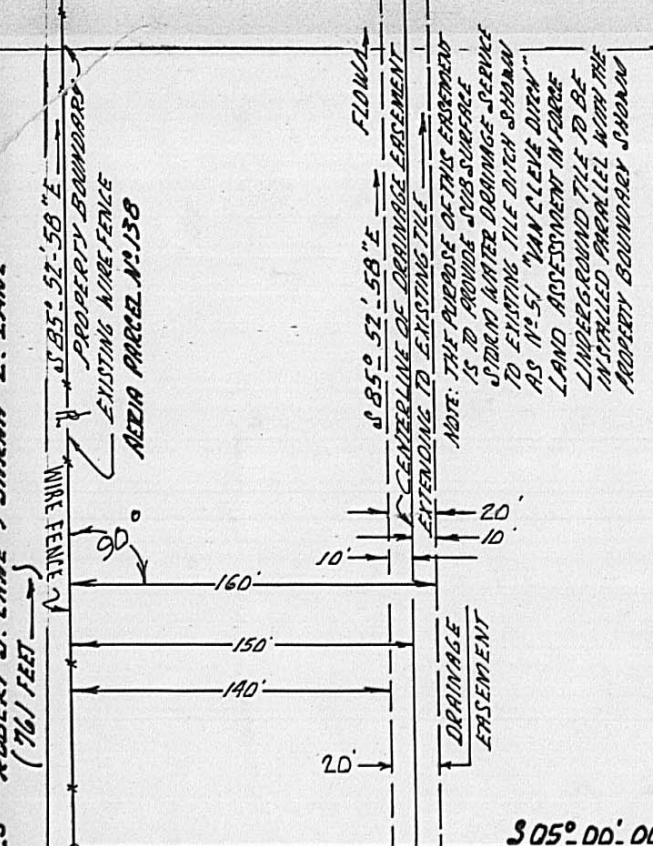


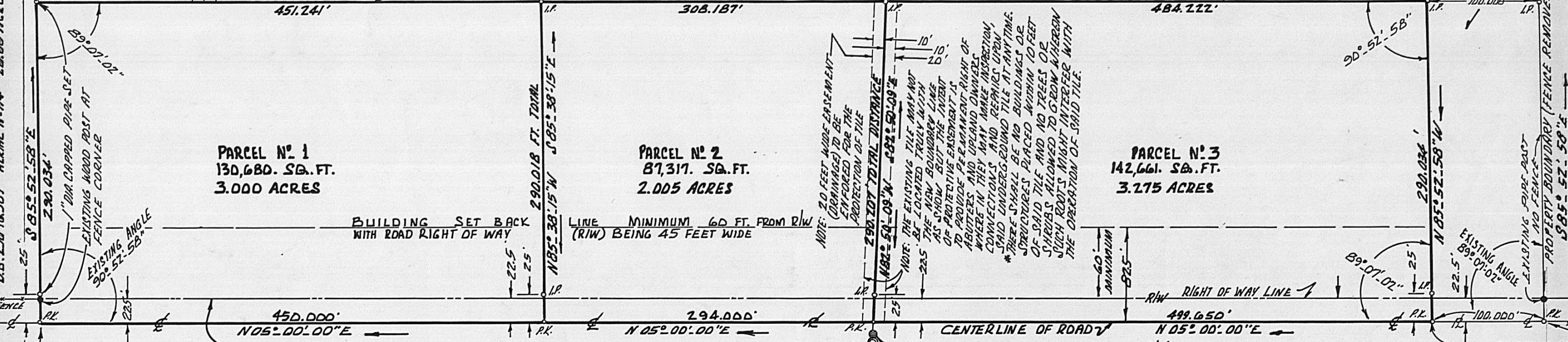
D.B. 250 PG. 389 AERIAL #14 24.00 ACRES ROBERT J. LANE & SARAH E. LANE



FIRST TRACT 60 ACRES VMS 5433 D.B. 277 PG. 737
DEAN MARSHALL & FAITH L. MARSHALL
TRANSFERRED OCT. 3, 1988
BEING PART OF TOTAL 96.750 ACRES TAX N° 07-00234.000
SEE AERIAL PARCEL 138 MAP 55

SEE PRIOR DEED VOLUME 248 AT PAGE 567
FRANK EDWIN GINGERICH - ANNA BELLE GINGERICH, LEE ROY MAST - LUELLE MAST

PLAT NORTH BEARINGS BASED ON ROAD CALL IN VOL. 277 AT PG. 737, 738, 739



WEST JEFFERSON - KIOUSVILLE CO. RD. N° 22 (45 FT. R/W)
AKA KIOUSVILLE - LILLY CHAPEL PIKE
 SEE REFERENCE FIRST TRACT D.B. 277 PG. 737
AKA CALIFORNIA - WEST JEFFERSON - BIG PLAIN PIKE
AKA LILLY CHAPEL - MT. STERLING PIKE
 SEE REFERENCES D.B. 232 PG. 194 D.B. 192 PG. 305
 D.B. 250 PG. 389 D.B. 167 PG. 186 D.B. 161 PG. 41

PLAT OF THREE PARCELS OF LAND
BEING PART OF 60 ACRES OF FIRST TRACT
DEAN MARSHALL AND FAITH L. MARSHALL
VMS 5433 DEED VOL. 277 PG. 737
FAIRFIELD TOWNSHIP, MADISON COUNTY
STATE OF OHIO SCALE: 1"=80' (FINAL)
SURVEYED IN JANUARY 1989 (REZONED)

AERIAL PARCELS	363, 364 & 362,	ON THIS SIDE OF ROADWAY	12.595 AC.	12.595 AC.	&	13.595 AC.	RESPECTFULLY
	ALSO	AERIAL PARCELS	359 & 260				
PARCEL	359	13.5950 ACRES	ROBERT J. LANE & SARAH E. LANE	VOL. 192 PG. 305			
PARCEL	360	51.1200 ACRES	" " " " " "	VOL. 162 PG. 186			
PARCEL	361	25.200 ACRES	" " " " " "	" " " " " "			
PARCELS	362, 363, 364 & 365	IN OWNERS NAME OF	SARAH E. LANE	VOL. 192 AT PG. 305			

RODGER IRWIN BAKER JAN 27-1989
 9430 NIAGARA TRAILS ROAD, MT. STERLING, O.

I CERTIFY THAT THIS PLAT HAS BEEN PREPARED FROM A CURRENT SURVEY WITH 1" CAPPED PIPE (I.P.) SET AT EACH CORNER AND P.K. SPIKE SET AT EACH ROAD PAVEMENT CORNER. CAPPED PIPE STAMPED R.I. BAKER S-05539.

