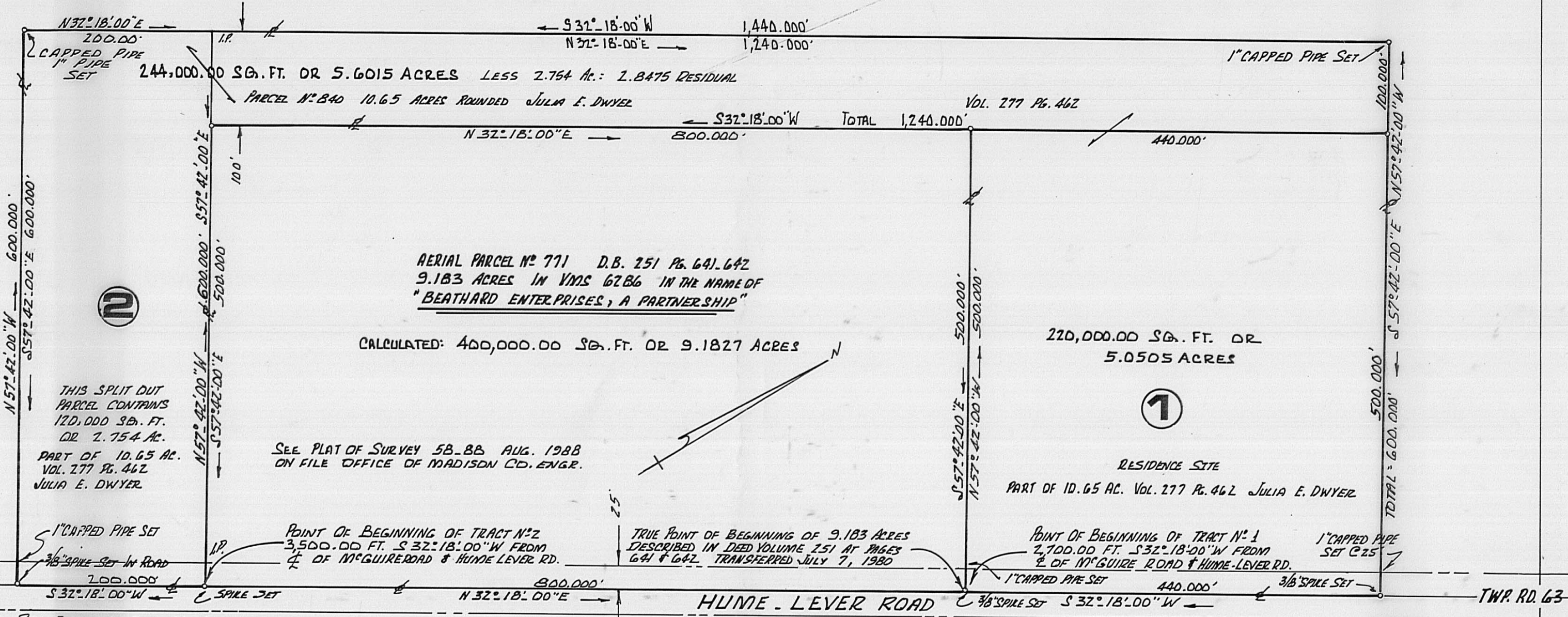


AERIAL PARCEL N° 273 129.44 ACRES VOL. 276 PG. 76 FEDERAL LANDBANK OF LOUISVILLE



AERIAL PARCEL N° 711 D.B. 251 PG. 641-642  
 9.183 ACRES IN VMS 6286 IN THE NAME OF  
 "BEATHARD ENTERPRISES, A PARTNERSHIP"

CALCULATED: 400,000.00 SQ. FT. OR 9.1827 ACRES

SEE PLAT OF SURVEY 5B-8B AUG. 1988  
 ON FILE OFFICE OF MADISON CO. ENGR.

THIS SPLIT OUT  
 PARCEL CONTAINS  
 120,000 SQ. FT.  
 OR 2.754 AC.  
 PART OF 10.65 AC.  
 VOL. 277 PG. 462  
 JULIA E. DWYER

RESIDENCE SITE  
 PART OF 10.65 AC. VOL. 277 PG. 462 JULIA E. DWYER

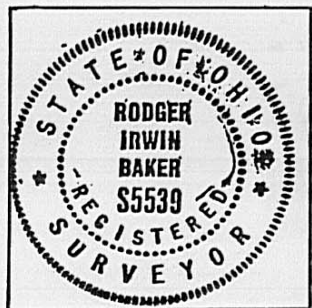
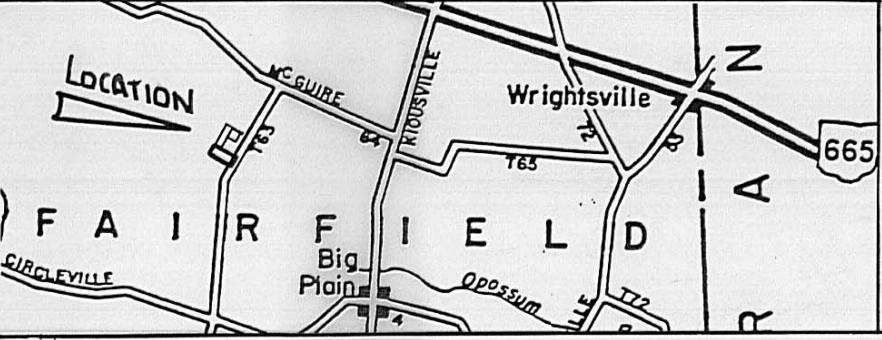
POINT OF BEGINNING OF TRACT N° 2  
 3,500.00 FT. S 32° 18' 00" W FROM  
 C. OF M<sup>c</sup>GUIRE ROAD & HUME LEVER RD.

TRUE POINT OF BEGINNING OF 9.183 ACRES  
 DESCRIBED IN DEED VOLUME 251 AT PAGES  
 641 & 642 TRANSFERRED JULY 7, 1980

POINT OF BEGINNING OF TRACT N° 1  
 2,700.00 FT. S 32° 18' 00" W FROM  
 C. OF M<sup>c</sup>GUIRE ROAD & HUME LEVER RD.

STEEL PIPE FOUND AT ROAD PT. 4,097.61 FEET  
 S 32° 18' 00" W ALONG ROAD CENTERLINE FROM  
 SPIKE FOUND IN C. OF M<sup>c</sup>GUIRE ROAD

THREE (3) TRACTS PLATTED FROM DESCRIPTIONS,  
 CORNER PINS NOT SET UNLESS NOTED OTHERWISE.



I CERTIFY THAT THIS PLAT HAS BEEN PREPARED  
 FROM DEEDS OF RECORD AND AS PER FIELD  
 MEASURE MADE BY ME IN AUG. 1988, DEC.  
 1988 & MARCH 1989 WITH SUBSEQUENT MEASURE  
 AND SURVEYING IN JULY 1989.  
 Rodger Irwin Baker July 21, 1989  
 RODGER IRWIN BAKER LIC. # S-05539  
 9430 NIOGA TOPPS ROAD  
 MT. STERLING OHIO 43143 614-877-3965

PLAT SHOWING LAND SPLIT OF 200 FT. BY 600 FT. IN VMS 6286  
 CIVIL TOWNSHIP OF FAIRFIELD COUNTY OF MADISON STATE OF OHIO  
 BEING 2.754 ACRES PART OF 5.6015 AC. OR PART OF TOTAL 10.65 AC.  
 AERIAL PARCEL N° 840 JULIA E. DWYER VOLUME 277 PAGE 462  
 BASED OF FIELD MEASURE FOR MAURICE E. BEATHARD & OTHERS  
 SCALE: 1"=100' JULY 21<sup>ST</sup> 1989  
 BEING 1/2 MILE ± SOUTHERLY FROM M<sup>c</sup>GUIRE ROAD  
 FOR ADDITIONAL REFERENCE SEE SURVEY PLAT 5B-8B

**50-89**