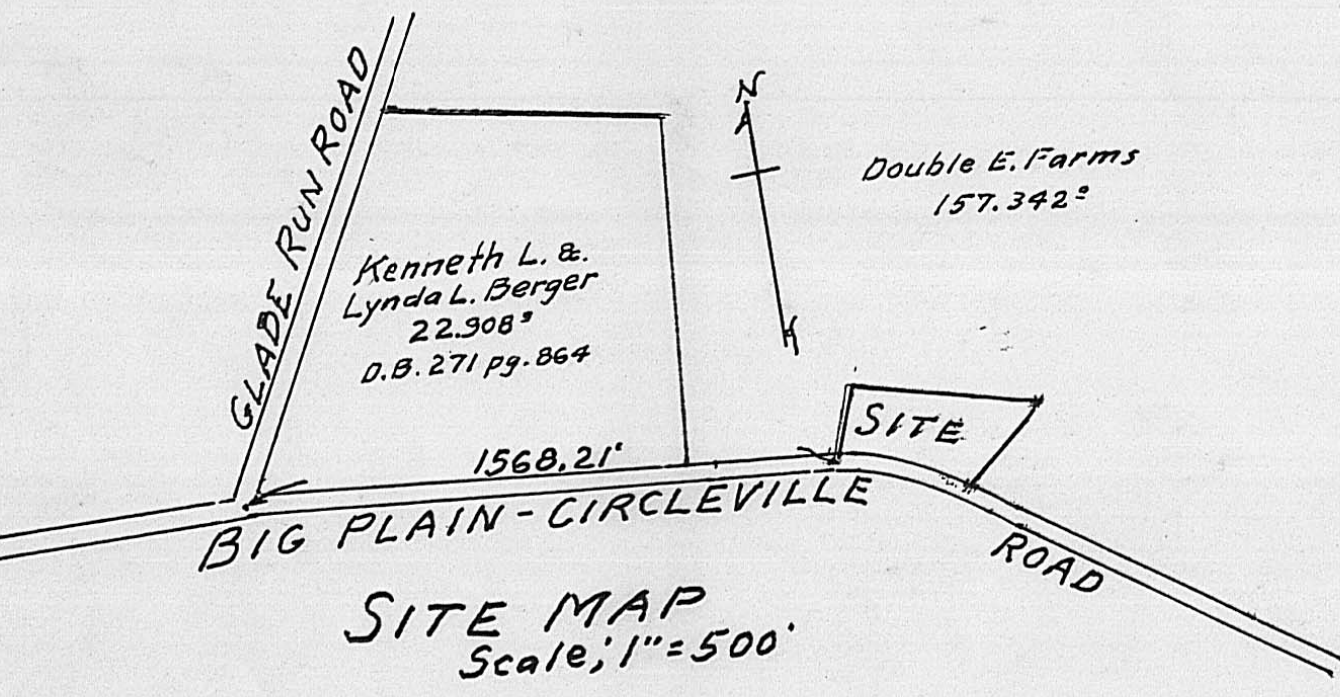
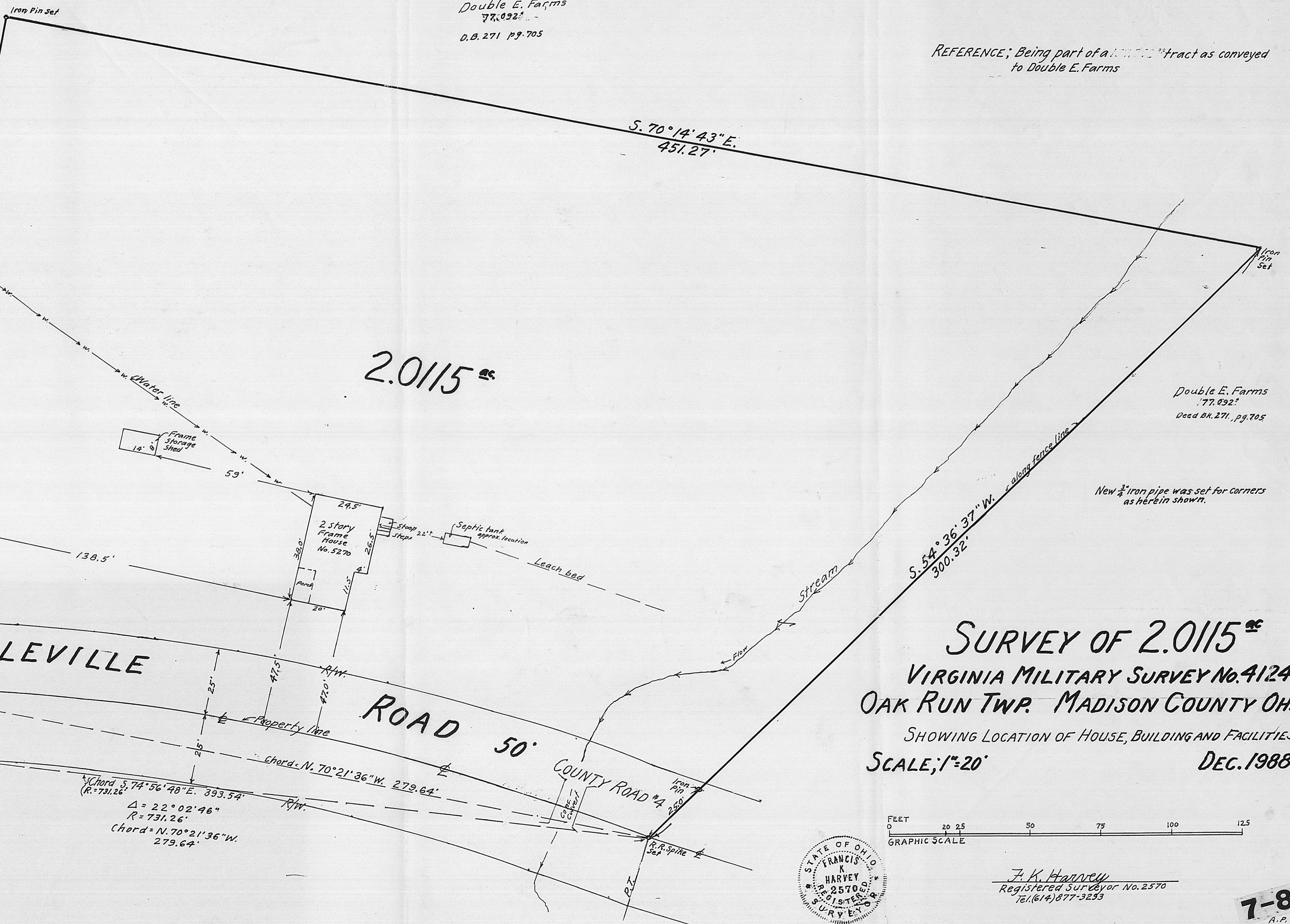


Double E. Farms
77,092
D.B. 271 pg. 705

REFERENCE; Being part of a [unclear] tract as conveyed
to Double E. Farms



Double E. Farms
77,092
Decd Bk. 271, pg. 705



Double E. Farms
77,092
Decd Bk. 271, pg. 705

New 3/4" iron pipe was set for corners
as herein shown.

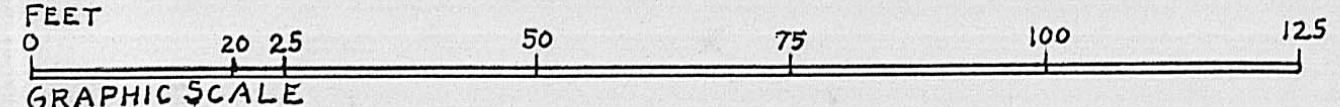
BIG PLAIN - CIRCLEVILLE ROAD

ROAD 50'

COUNTY ROAD #4

SURVEY OF 2.0115^{ac}
VIRGINIA MILITARY SURVEY No. 4124
OAK RUN TWP. MADISON COUNTY OHIO
SHOWING LOCATION OF HOUSE, BUILDING AND FACILITIES
SCALE; 1"=20'

Oak Run Enterprises
57,906
Decd Bk. 257, pg. 14



F. K. Harvey
Registered Surveyor No. 2570
Tel. (614) 877-3293

7-89
A.P. 576