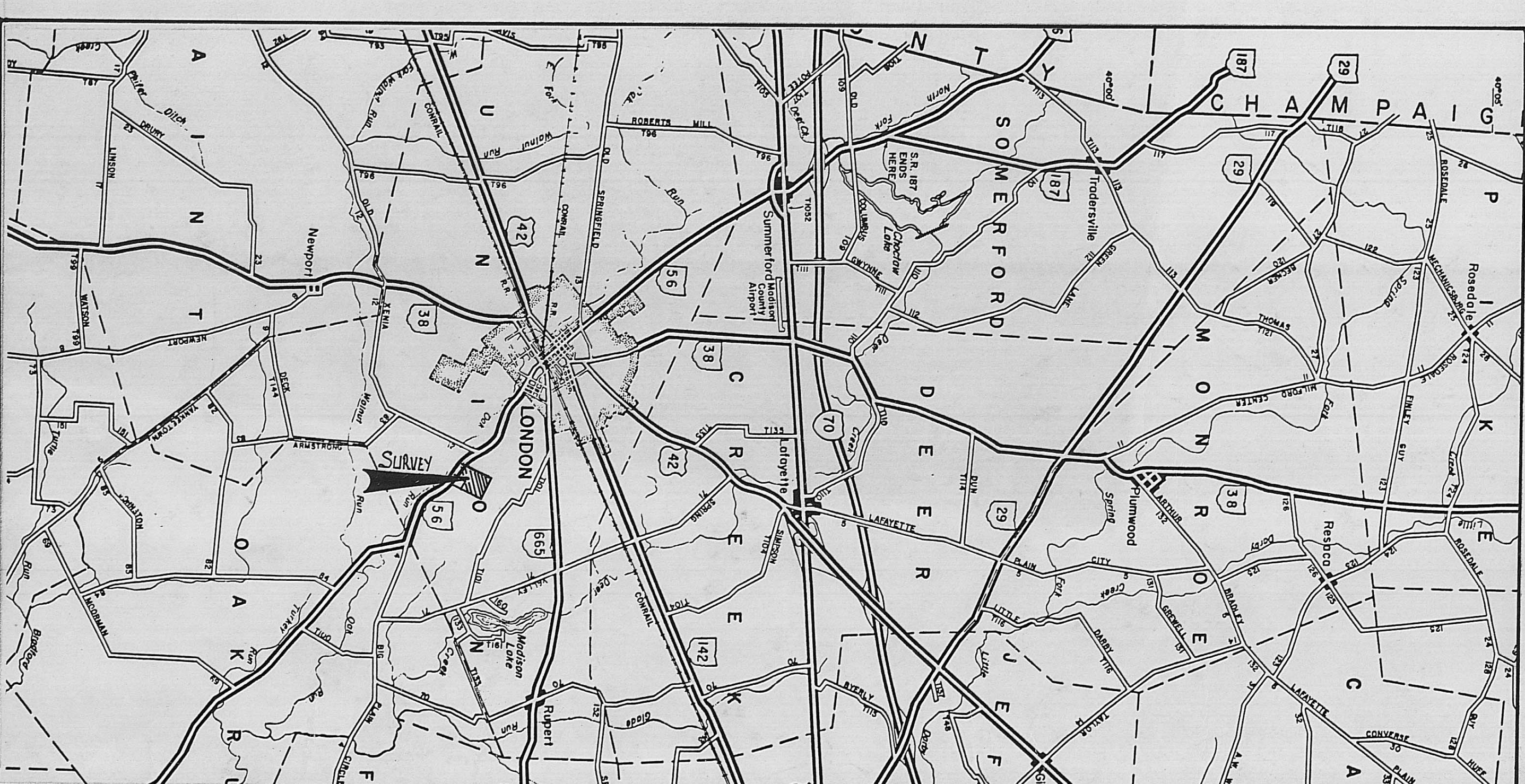
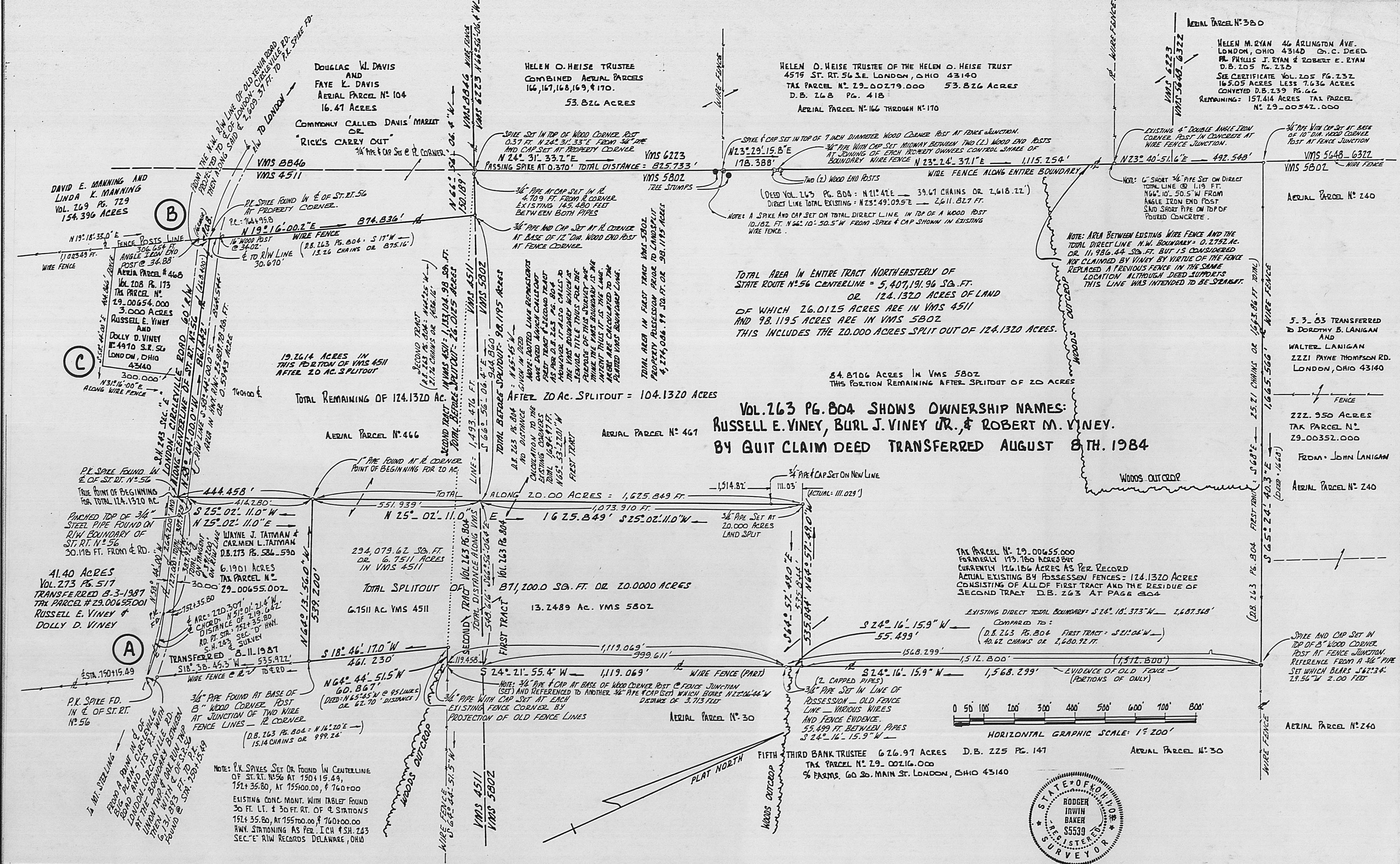


REFERENCES USED

D.B. 117	Pg. 203
D.B. 139	Pg. 341
D.B. 157	Pg. 535
D.B. 231	Pg. 86
D.B. 263	Pg. 804
D.B. 273	Pg. 517-586-590
D.B. 208	Pg. 173
D.B. 205	Pg. 232
D.B. 268	Pg. 418



I HEREBY CERTIFY THAT THIS PLAT IS BASED ON A CURRENT FIELD SURVEY MADE BY ME IN OCTOBER & NOVEMBER 1981 AND THAT ALL CORNERS AFFECTED HAVE EITHER BEEN FOUND OR SET AS DELINEATED AND TO THE ACTUAL ACCEPTED LINES OF POSSESSION. ALL PIPES SET ARE 3/4 INCH DIAMETER CAPPED WITH STAMPED MARKING R.I. BAKER S-05539. BEARINGS BASED ON S.H.#243 SEC."D" & "E" HWY. SURVEY & D.B. 273 PG. 517 & D.B. 273 PG. 586-590. REQUESTED BY: RUSSELL E. VINEY & DOLLY D. VINEY

Rodger Irwin Baker PS
 RODGER IRWIN BAKER PS. NO. S-05539
 9430 NIOGA TOPPS RD. MT. STERLING, OHIO 43143

TITLE: PLAT OF TWO (2) FIELD SURVEYS - ALONG SR. 56 IN VMS 4511 & VMS 5802 UNION TWP, MADISON CO., OHIO CONTAINING A TOTAL OF 124.1320 ACRES AND ALSO A LANDSPLIT THEREFROM OF 20.000 ACRES PART OF TAX PARCEL N° 29-00655.000 ACRES RUSSELL E. VINEY AND OTHERS OWNERS

SCALE: AS SHOWN
 (NOTE: DUPLICATE SHOWS 126.186 ACRES)