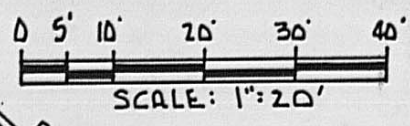
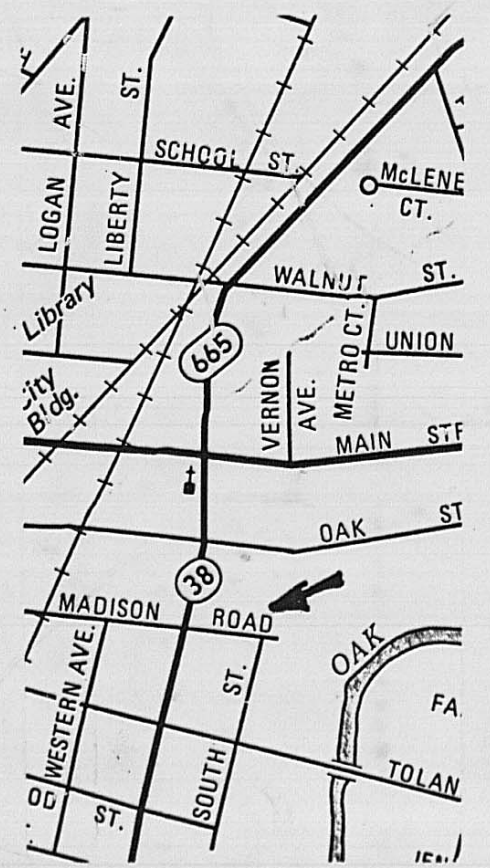


129-90

WEST CENTER STREET

129-90

THIS LINE IS BASED ON VARIOUS PINS OR PIPES FOUND AT SOUTH MADISON STREET AND
THIS LINE IS ALSO ESTABLISHED FROM PINS & EVIDENCE ON OPPOSITE SIDE
OF WEST CENTER STREET.



PLAT NORTH

THIS LINE IS BASED ON VARIOUS PINS OR PIPES FOUND ON EACH SIDE OF SOUTH MADISON STREET.

16 1/2' PUBLIC ALLEY

16 1/2' PUBLIC ALLEY

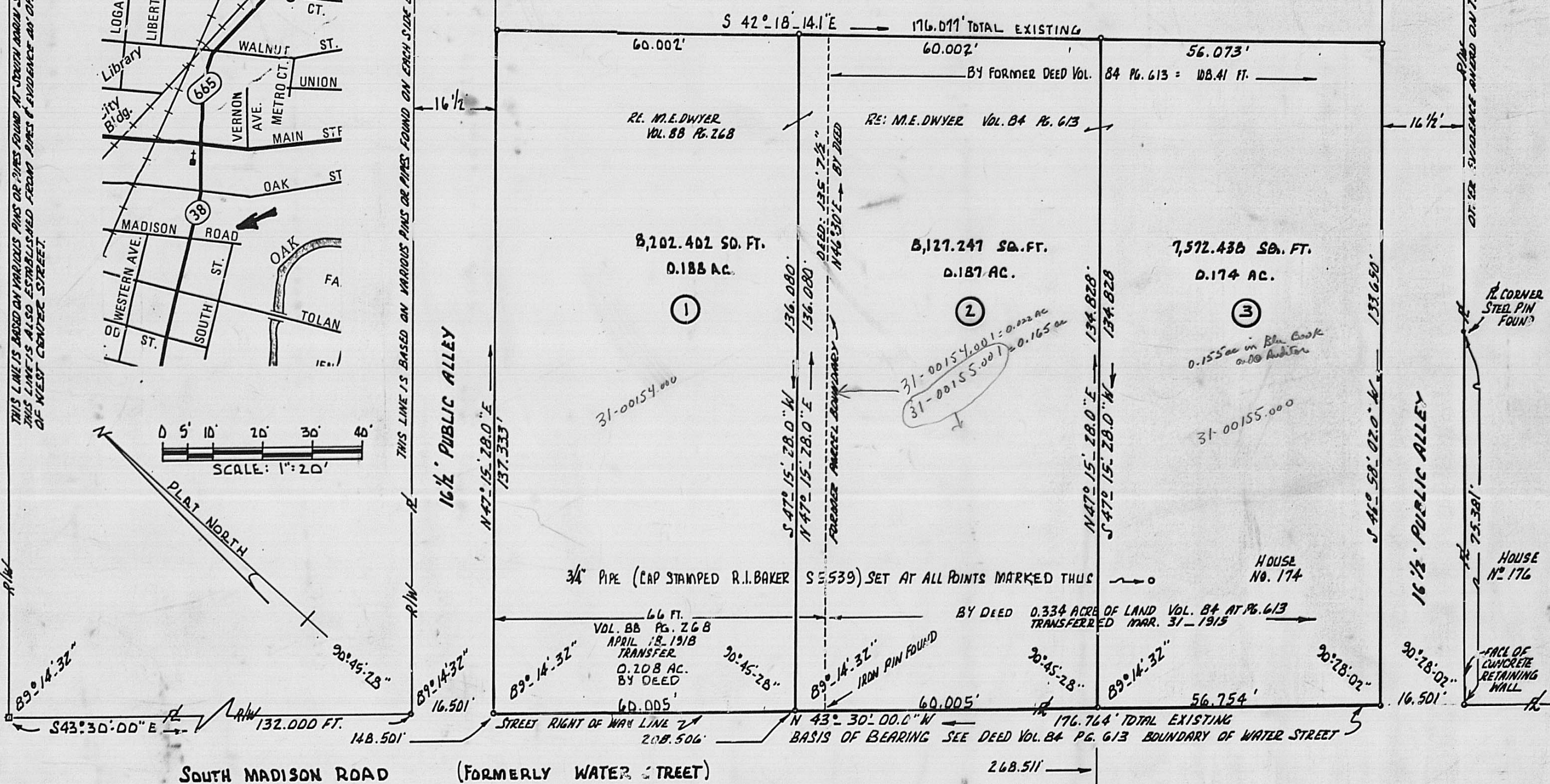
16 1/2' PUBLIC ALLEY

16 1/2' PUBLIC ALLEY

HOUSE NO. 176

HOUSE NO. 176

FACE OF CONCRETE RETAINING WALL



PLAT OF FIELD SURVEY - THREE PARCELS SOUTH MADISON ROAD LONDON, OHIO MADISON COUNTY FOR: MAURICE BEATHARD BEING SOUTHERLY FROM WEST CENTER STREET

Rodger Irwin Baker DEC. 15 '89
RODGER IRWIN BAKER
9430 NIDGA TOPS RD.
MT. STERLING, OHIO 43183

THIS PLAT DELINEATES THE DIVISION OF TWO PARCELS OF LAND INTO THREE PARCELS - EACH HAVING BEEN SURVEYED DURING NOV. & DEC. 1988 BY RODGER IRWIN BAKER PS S. 05533. I CERTIFY THAT THIS PLAT CORRECTLY SHOWS THE EXISTING LINES OF OCCUPATION AND HAS BEEN REVIEWED & APPROVED (LANDSPLIT AREAS) BY THE OFFICIALS OF LONDON, OHIO.



129-90