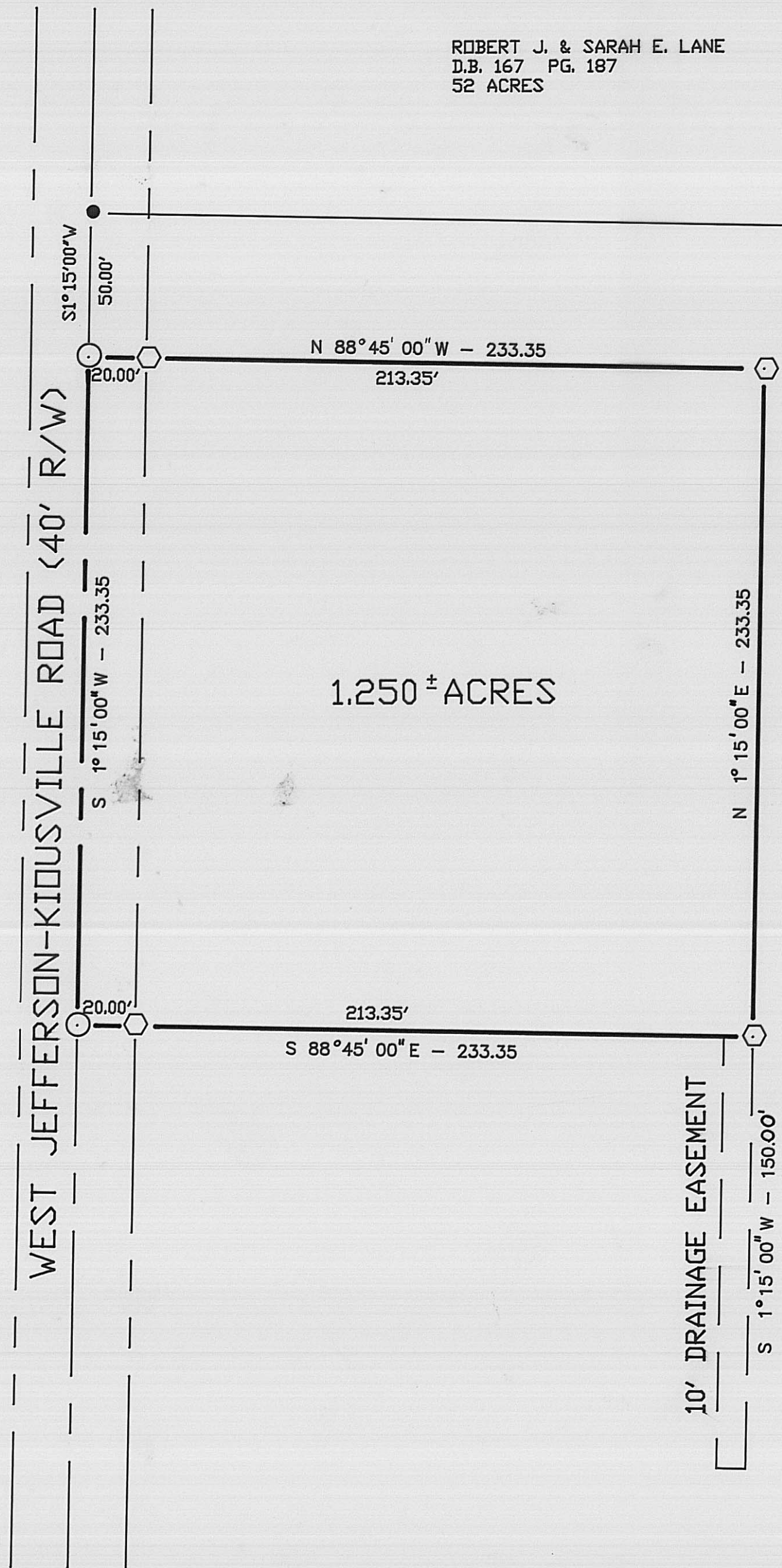
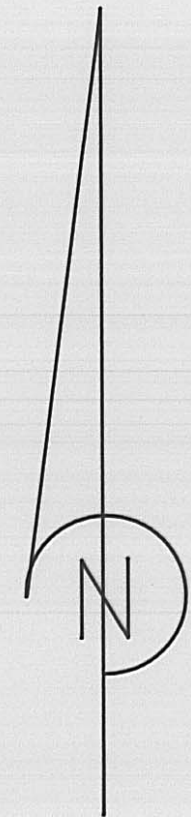


ROBERT J. & SARAH E. LANE
D.B. 167 PG. 187
52 ACRES



BEARINGS BASED ON THE CENTERLINE OF WESTJEFFERSON-KIOUSVILLE ROAD (S1°15'W) AS DESCRIBED IN D.B. 244 PG. 247



THELMA MAXINE WELLS
D.B. 244 PG. 247
45.2604 ACRES

LEGEND

- RAILROAD SPIKE SET
- P K NAIL SET
- ⬡ 5/8" REBAR & YELLOW PLASTIC CAP STAMPED 'COTTRILL 6858" SET

JAMES R. COTTRILL P.S.

8256 S.R.207 N.E. MT. STERLING, OHIO 43143 PH. (614) 869-3811

PLAT OF

1.250 ACRES, V.M.S. 5433, FAIRFIELD TOWNSHIP, MADISON COUNTY, STATE OF OHIO.

DATE:
10-10-89

SCALE: 1" = 40'
40' 20' 0 40'

16-90