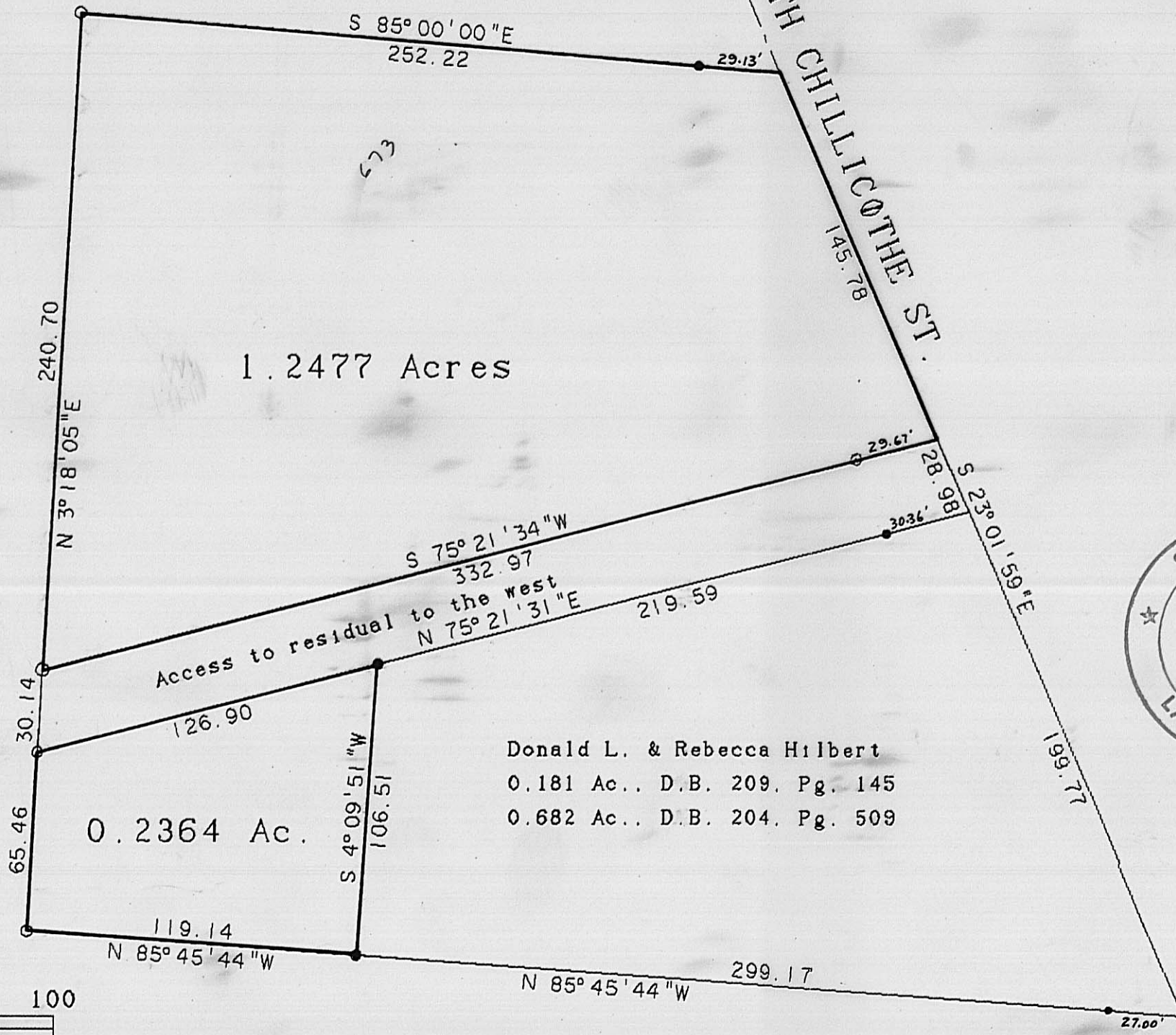


Donald E. Dean  
1.40 Ac., D.B. 261, Pg. 62



Donald L. & Rebecca Hilbert  
0.181 Ac., D.B. 209, Pg. 145  
0.682 Ac., D.B. 204, Pg. 509

Martha Sciacca  
21.75 Ac., D.B. 212, Pg. 314



GRANTOR: LEROY HILBERT, D.B. 192, PG. 257  
LOCATION: VILLAGE OF PLAIN CITY, VMS 5125  
ACREAGE: 0.2364 AC. & 1.2477 AC. OUT OF ORIGINAL 13.584 AC.

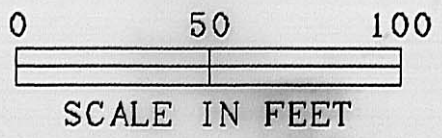


CERTIFICATION

I HEREBY CERTIFY THAT THE HEREON PLATTED PROPERTY WAS SURVEYED TO ACCEPTABLE STANDARDS AND THAT THE ERROR OF CLOSURE DOES NOT EXCEED 0.02 FEET.

*Roger E. Thompson*

ROGER E. THOMPSON, PS 6552



R. E. THOMPSON  
ENGINEERING & SURVEYING CO.  
2005 DEER RUN LANE  
LONDON, OHIO 43140

NOVEMBER, 1989

- Indicates iron pin found 21-90
- Indicates 3/4" iron pipe set