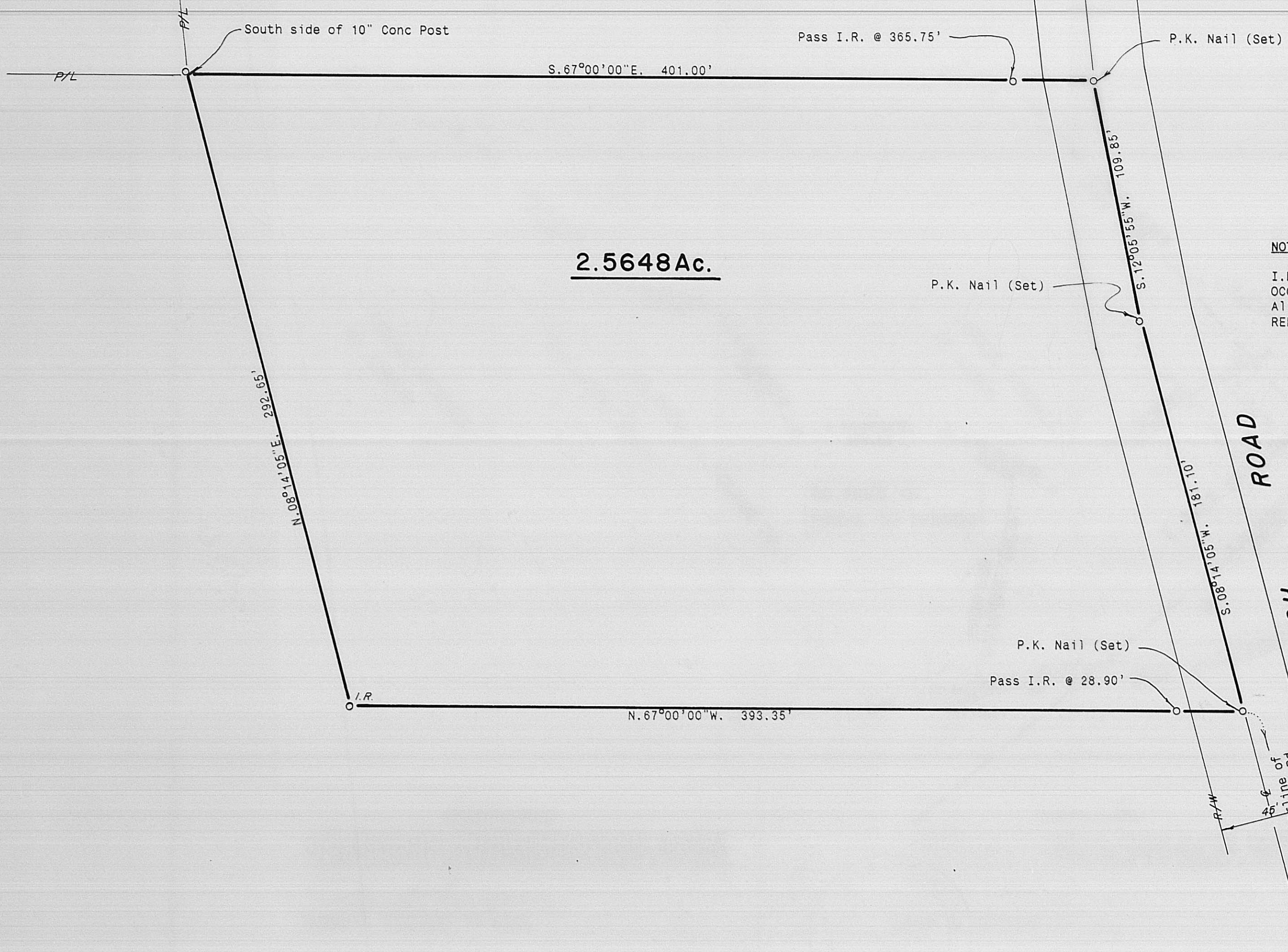


JOSEPH MILLER Jr., et al
D.B 144, PG. 124
84.36 Ac.

BOARD OF EDUCATION OF PLAIN VIEW CHRISTIAN DAY SCHOOL
D.B. 258, PG. 292
1.64 Ac.



DEED REFERENCE:

JOHN W. MILLER et al
D.B. 141, PG. 613
84.66 Ac.

NOTES

I.R. = 5/8" Iron Rod (Set) with plastic cap stamped "RLL 6106."
OCCUPATION: Roadway & Monumentation (Fd.)
All monumentation is in good condition.
REFERENCE BEARING: S.67°00'00"E. The south line of the 1.64 Ac. Tract.

2.5648Ac.

**ROAD
AMISH**

2305.83' to Center line of
Lafayette - Plain City Rd.

Ronald L. Linton



Gale L. Helms & Assoc., Inc.
Consulting Engineers & Surveyors
222 N. OAKLAND AVE.
WASHINGTON C.H., OHIO 43160 PH. (614) 335-3816

SURVEY OF 2.5648 AC.
V.M.S. 10982
CANAAN TOWNSHIP
MADISON COUNTY, OHIO

DATE: AUG. 3, 1990 SCALE: 1"=40'