

PLAT OF SURVEY FOR:  
 CONSOLIDATED RAIL CORP.  
 DARBY TOWNSHIP - VMS 7758-7830  
 MADISON COUNTY OHIO

- NOTES
- 1) SCALE 1"=30'
  - 2) ○ I.P. SET ARE 3/4" x 30" GALV. PIPE  
 PIPE W PLASTIC I.D. CAP
  - 3) ● I.P. FOUND UNLESS NOTED
  - 4) BEARINGS BASED ON PREVIOUS SURVEY
  - 5) FOR FURTHER RAILROAD INFO.  
 SEE SURVEY DATED AUG 14 1989  
 ON FILE AT MADISON COUNTY  
 ENGINEERS OFFICE

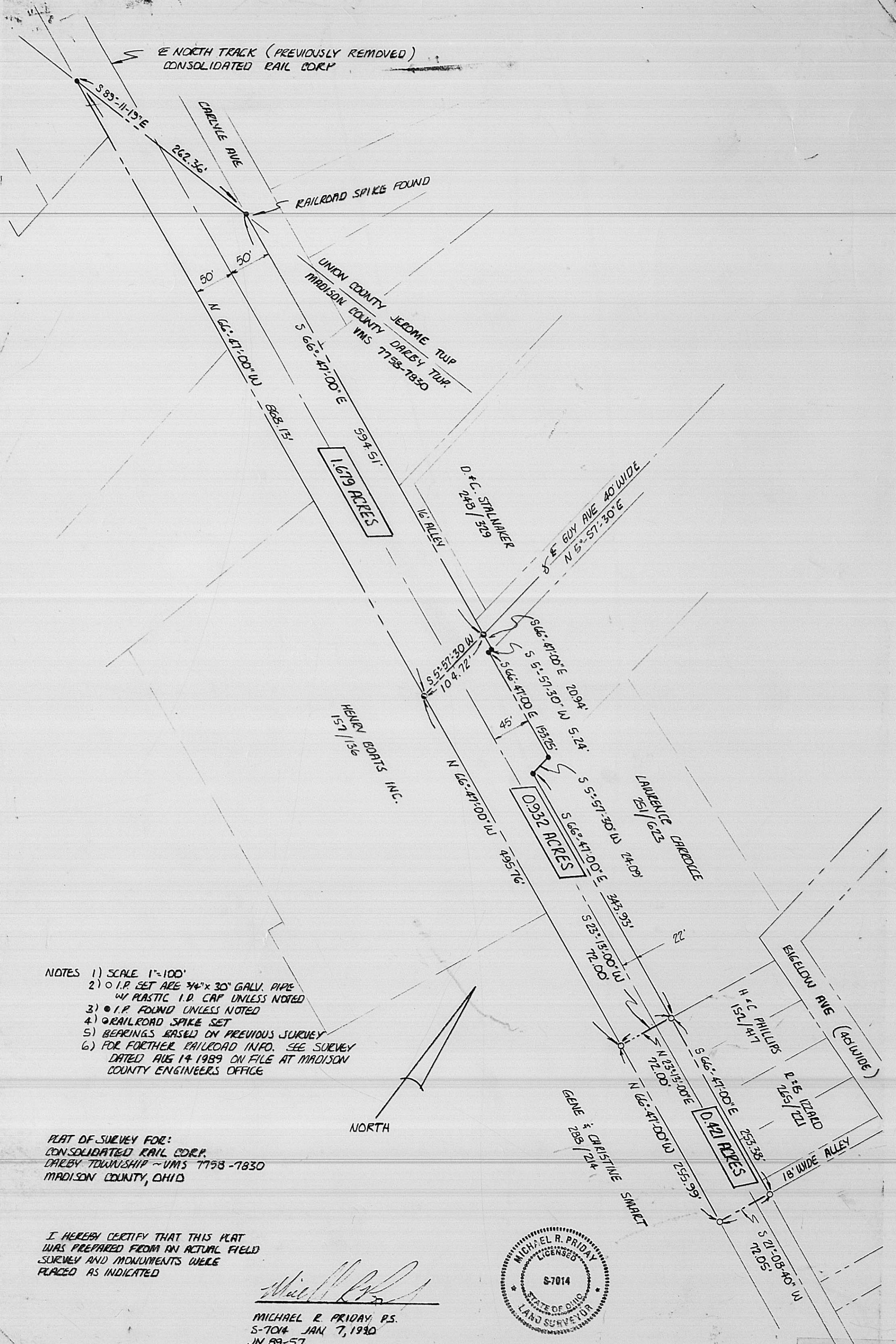
NDRTH



I HEREBY CERTIFY THAT THIS PLAT  
 WAS PREPARED FROM AN ACTUAL  
 FIELD SURVEY AND MONUMENTS  
 WERE PLACED AS INDICATED

*Michael R. Friday*  
 MICHAEL R. FRIDAY P.S.  
 S-7014 JAN 7, 1990  
 JN 89-57

*see Bill*



- NOTES
- 1) SCALE 1"=100'
  - 2) ○ I.P. SET ARE 3/4" x 30" GALV. PIPE  
 W PLASTIC I.D. CAP UNLESS NOTED
  - 3) ● I.P. FOUND UNLESS NOTED
  - 4) ○ RAILROAD SPIKE SET
  - 5) BEARINGS BASED ON PREVIOUS SURVEY
  - 6) FOR FURTHER RAILROAD INFO. SEE SURVEY  
 DATED AUG 14 1989 ON FILE AT MADISON  
 COUNTY ENGINEERS OFFICE

NORTH



PLAT OF SURVEY FOR:  
 CONSOLIDATED RAIL CORP.  
 DARBY TOWNSHIP - VMS 7758-7830  
 MADISON COUNTY, OHIO

I HEREBY CERTIFY THAT THIS PLAT  
 WAS PREPARED FROM AN ACTUAL  
 SURVEY AND MONUMENTS WERE  
 PLACED AS INDICATED

*Michael R. Friday*  
 MICHAEL R. FRIDAY P.S.  
 S-7014 JAN 7, 1990  
 JN 89-57