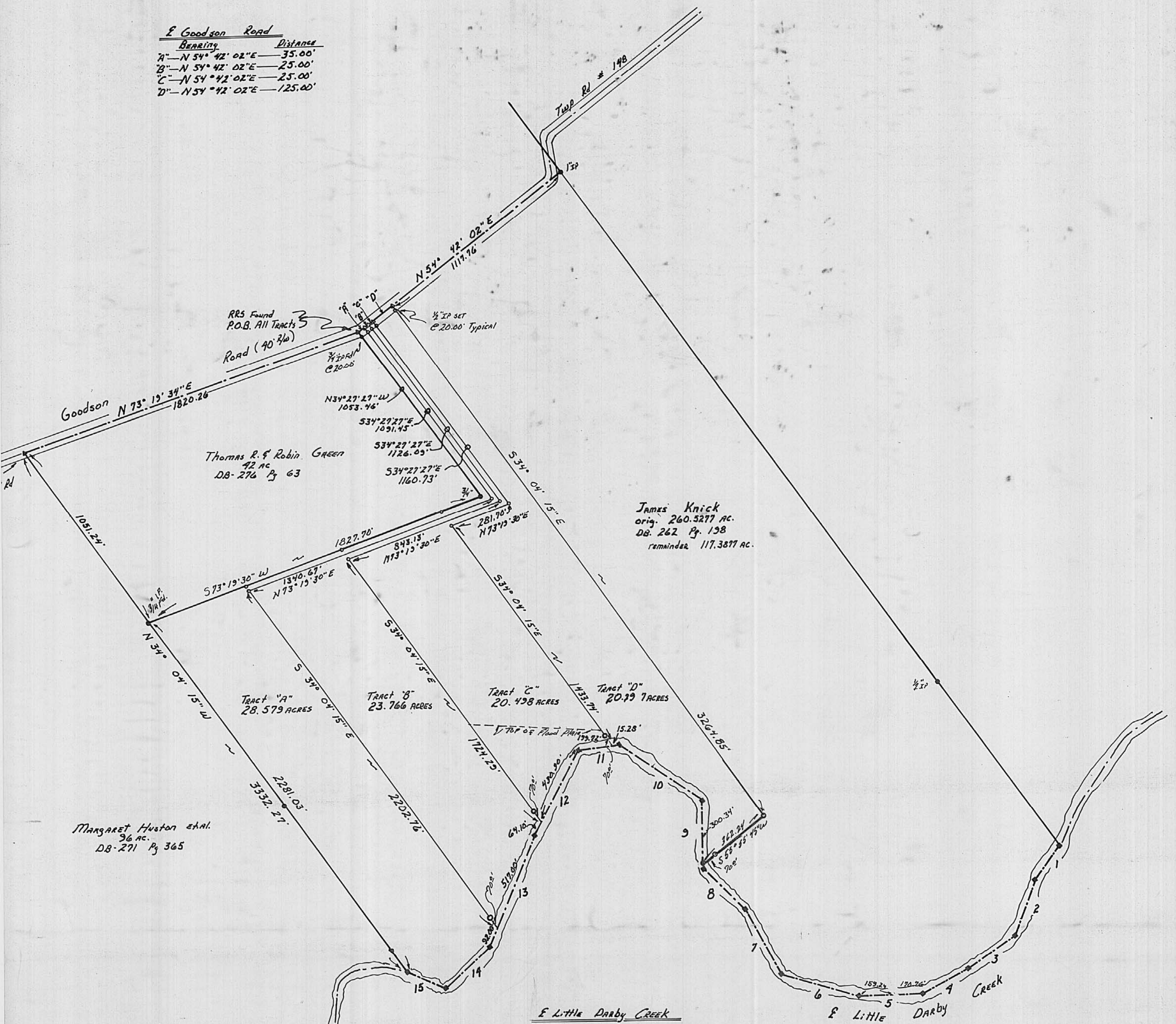


E Goodson Road

Bearing	Distance
A'-N 54° 42' 02" E	35.00'
B'-N 54° 42' 02" E	25.00'
C'-N 54° 42' 02" E	25.00'
D'-N 54° 42' 02" E	125.00'



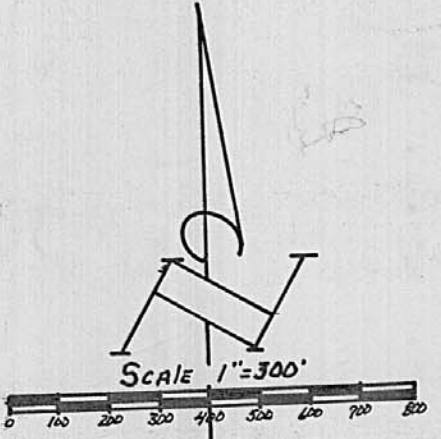
Margaret Huston et al.  
96 ac.  
DB-271 Pg 365

Thomas R. & Robin Green  
42 ac.  
DB-276 Pg 63

James Knick  
orig. 260.5277 ac.  
DB-262 Pg 198  
remainder 117.3877 ac.

E Little Darby Creek

Bearing	Distance
1-S 40° 06' 21" W	222.62'
2-S 23° 20' 00" W	300.00'
3-S 58° 00' 00" W	295.00'
4-S 64° 10' 00" W	265.00'
5-N 89° 50' 00" W	330.00'
6-N 71° 30' 00" W	420.00'
7-N 26° 40' 00" W	375.00'
8-N 43° 30' 00" W	300.00'
9-N 00° 45' 00" E	375.00'
10-N 54° 05' 00" W	530.00'
11-S 85° 46' 00" W	215.00'
12-S 30° 04' 00" W	495.00'
13-S 24° 45' 00" W	609.00'
14-S 49° 46' 13" W	313.62'
15-N 64° 34' 18" W	215.71'



- Legend
- 3/8" Re-bar Set
  - Iron Pipe Found
  - ⊙ Railroad Spike Set
  - ⊙ Railroad Spike Found
  - ⊙ Point in E Creek



SURVEY OF FOUR TRACTS  
in V.M.S. # 2985, JEFFERSON TWP.,  
MADISON CO., OHIO:  
FOR  
JAMES KNICK

**Louis F Haines**  
354 Kessler Street  
Groveport, Ohio 43125  
Phone 637-2181

I HEREBY CERTIFY THE PLAT SHOWN HEREON  
IS CORRECT AS SURVEYED BY US.  
DATE: March 24, 1990  
SIGNED: Louis F. Haines