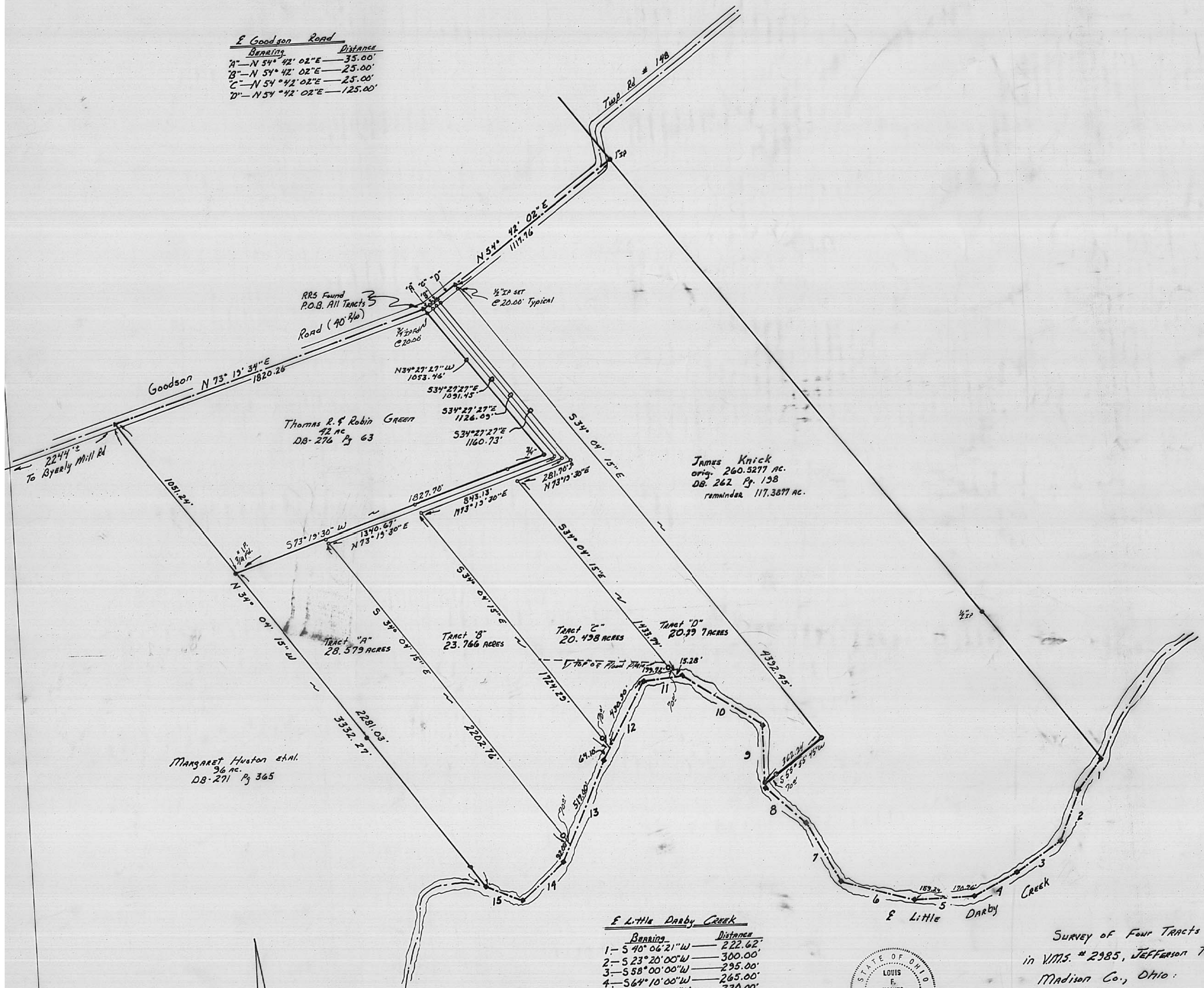


E Goodson Road	
Bearing	Distance
A'-N 54° 42' 02"E	35.00'
B'-N 54° 42' 02"E	25.00'
C'-N 54° 42' 02"E	25.00'
D'-N 54° 42' 02"E	125.00'



MARGARET HUSTON et al.  
96 ac.  
DB-271 Pg 365

JAMES Knick  
orig. 260.5277 ac.  
DB-262 Pg 198  
remainder 117.3877 ac.

THOMAS R. & ROBIN GREEN  
42 ac  
DB-276 Pg 63

Tract "A"  
28.579 ACRES

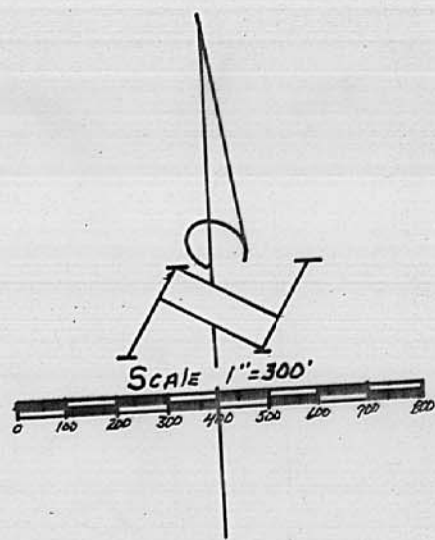
Tract "B"  
23.766 ACRES

Tract "C"  
20.498 ACRES

Tract "D"  
20.777 ACRES

E Little Darby Creek

Bearing	Distance
1- S 40° 06' 21" W	222.62'
2- S 23° 20' 00" W	300.00'
3- S 58° 00' 00" W	295.00'
4- S 64° 10' 00" W	265.00'
5- N 89° 50' 00" W	330.00'
6- N 71° 30' 00" W	420.00'
7- N 26° 40' 00" W	375.00'
8- N 43° 30' 00" W	300.00'
9- N 00° 45' 00" E	345.00'
10- N 54° 03' 00" W	530.00'
11- S 85° 16' 00" W	215.00'
12- S 30° 04' 00" W	195.00'
13- S 24° 45' 00" W	609.00'
14- S 49° 16' 13" W	313.62'
15- N 64° 34' 18" W	215.71'



Legend

- 1/2" Re-bar Set
- Iron Pipe Found
- ▲ Railroad Spike Set
- ◆ Railroad Spike Found
- Point in E Creek



SURVEY OF FOUR TRACTS  
in V.M.S. # 2985, JEFFERSON TWP.,  
Madison Co., Ohio:  
for  
JAMES Knick

Louis F Haines

354 Kessler Street  
Groveport, Ohio 43125  
Phone 837-2181

I HEREBY CERTIFY THE PLAT SHOWN HEREON  
IS CORRECT AS SURVEYED BY US.  
DATE: MARCH 24, 1950  
SIGNED: Louis F. Haines