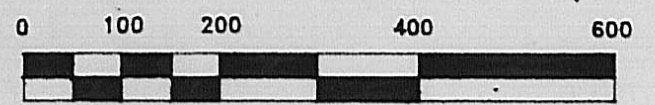


4.722 Acres in Plain City corporation
 7.969 Acres in Darby Township

Plat showing 12.691 acre tract, being part of Virginia Military Surveys No. 3685 (7.969 ac.), No. 5125 (2.515 ac.), No. 5128 (0.182 ac.), No. 7758 7830 (0.253 ac.), and No. 13281 (1.772 ac.), located partly in the Village of Plain City (4.722 ac.) and Darby Township (7.969 ac.), County of Madison, State of Ohio

for
Darby Land Corporation
 327 N. Main Street
 P.O. Box 607
 Marysville, Ohio 43040



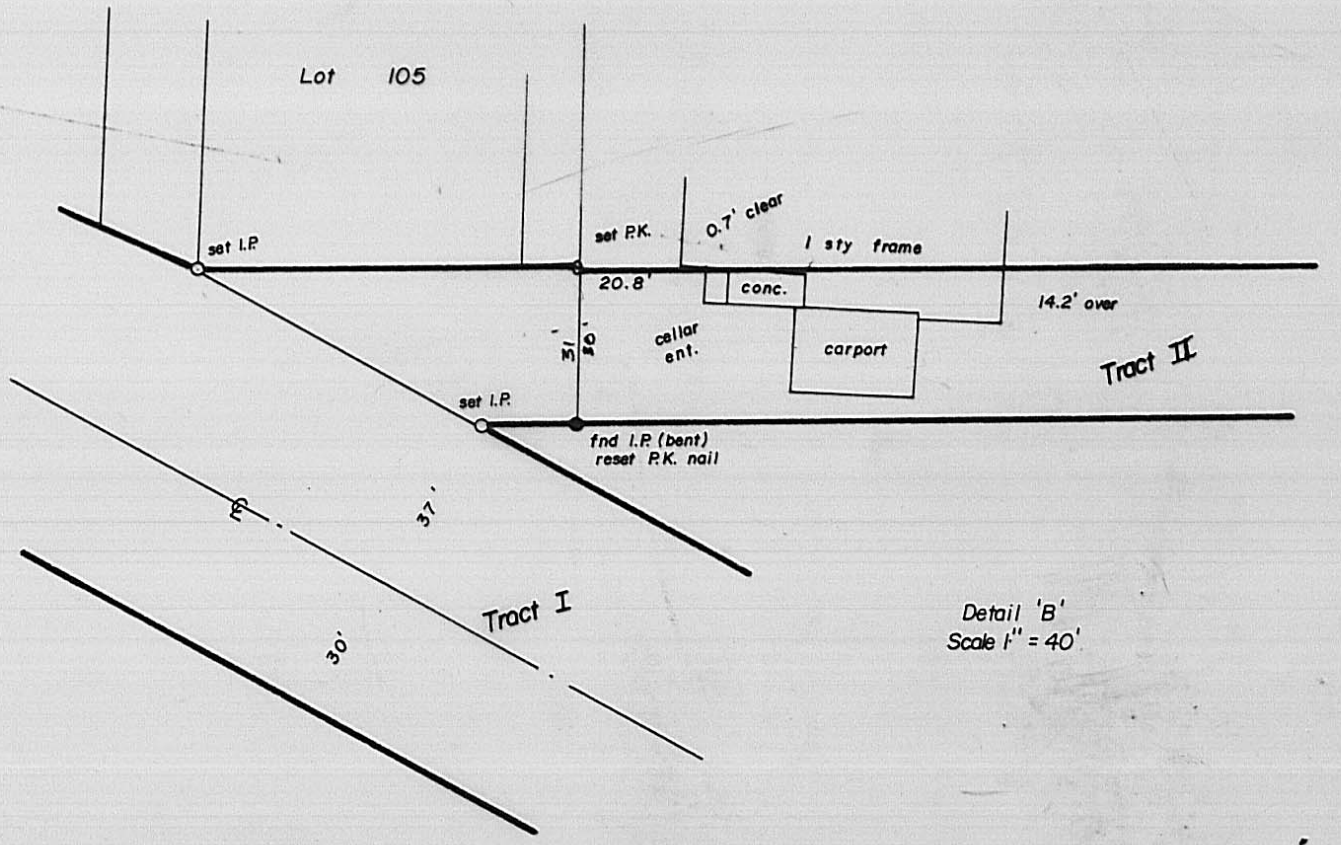
Scale 1" = 200'
 December 18, 1989
 Basis of bearings from Phila. Balto. & Washington R.R. plans sheet V4 page 14 on centerline of Cemetery Pike Rd.

SUBDIVISIONS

- ① Pleasant Valley Isaac Bigelow 6th Add'n. P.B. 1, PG. 35
- ② Pleasant Valley Isaac Bigelow 4th Add'n. P.B. 1, PG. 27
- ③ W.P. Andrew's Add'n. P.B. 1, PG. 139
- ④ A.H. Sherwood 1st Add'n. P.B. 1, PG. 73
- ⑤ A.H. Sherwood 2nd Add'n. P.B. 1, PG. 83

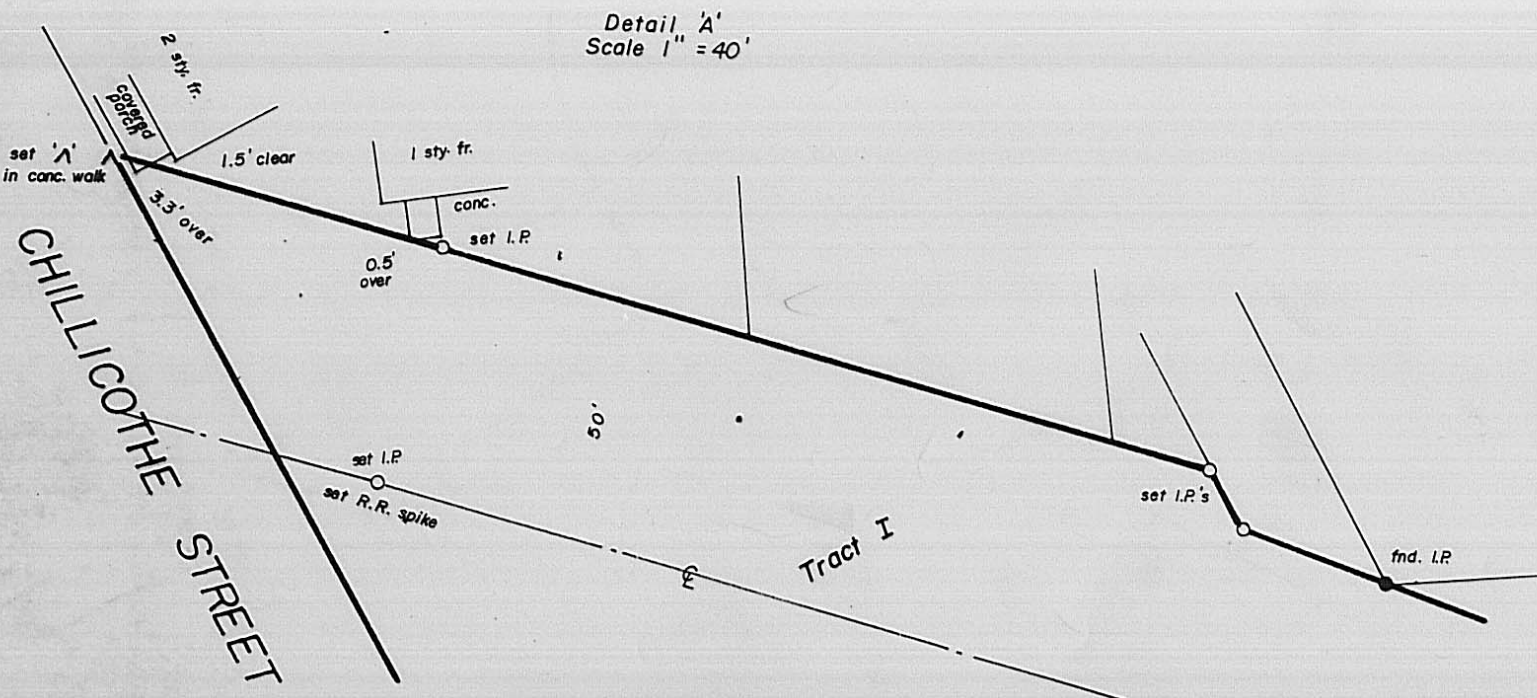
Tract I
 12.374 ac.

Tract II
 0.317 ac.



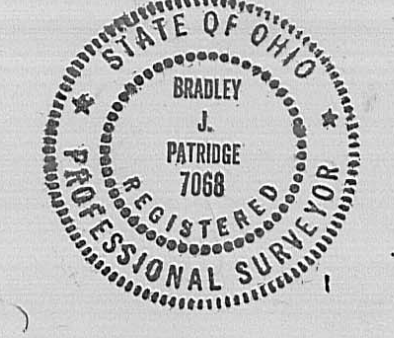
LEGEND

- FOUND IRON PIPE
- SET IRON PIN (CAPPED P.S. 7068)
- VIRGINIA MILITARY SURVEY LINE



I hereby certify that this plat represents an actual survey of the above shown premises, and that all monuments shown thereon exist as located, in November, 1989.

Bradley J. Patridge
 PROFESSIONAL SURVEYOR NO. 7068



R.T. PATRIDGE & ASSOCIATES
 PROFESSIONAL ENGINEERS AND SURVEYORS
 8480 DUBLIN ROAD
 POWELL, OHIO 43086
 (614) 981-6574
 FAX (614) 981-6538

C. Kaden
 D.V. 271, Pg. 810
 11300 Ac.
 Par. # 2-00133

Darby Township Trustees
 D.V. 271, Pg. 823
 11300 Ac.
 Par. # 2-00358

M.S. & F.A. Huestler
 D.V. 156, Pg. 623
 11300 Ac.
 Par. # 2-00119

Columbian Gas of Ohio, Inc.
 D.V. 212, Pg. 61
 11300 Ac.