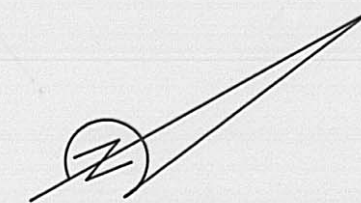
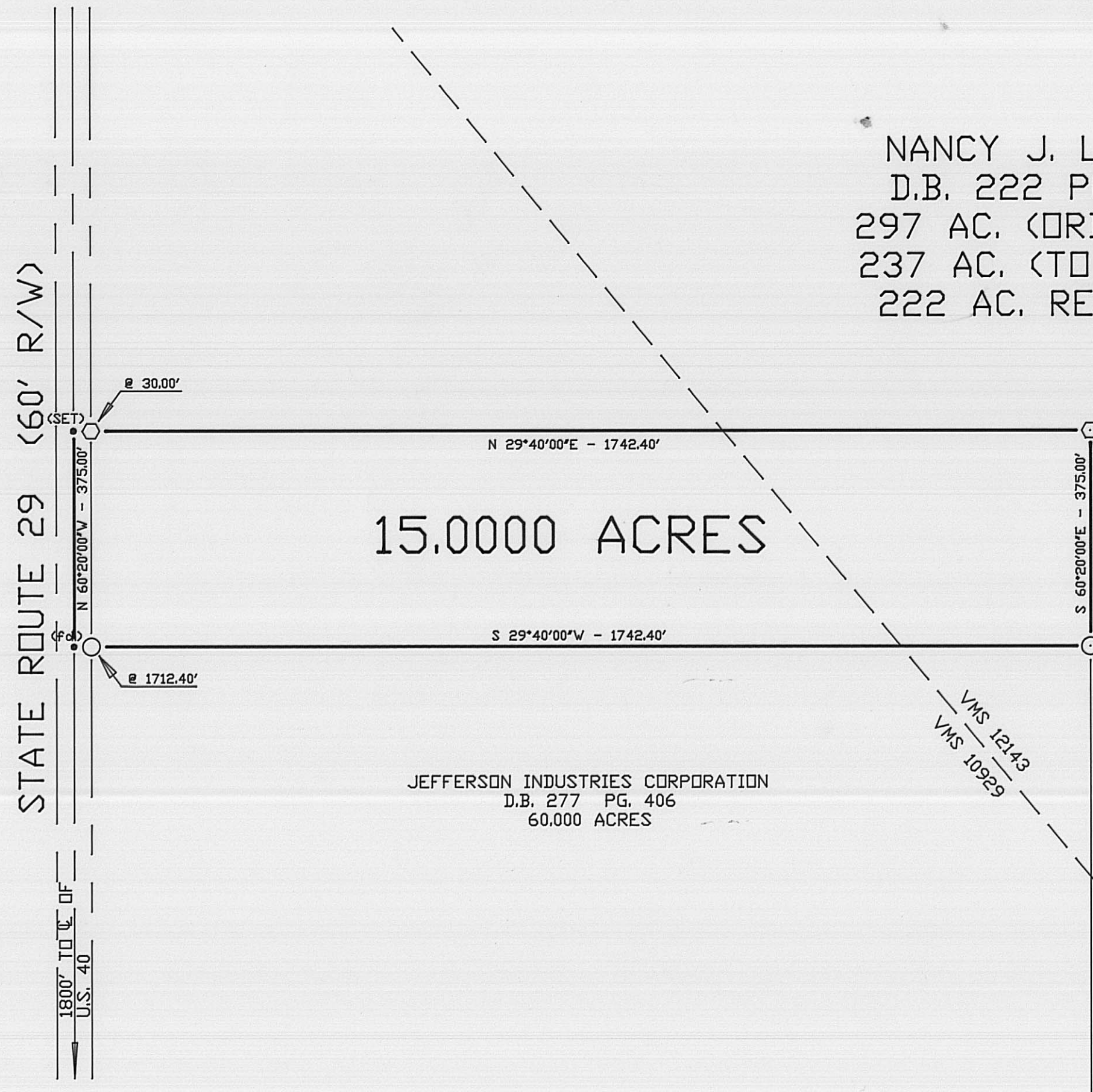


NANCY J. LOOBY
 D.B. 222 PG. 55
 297 AC. (ORIGINAL)
 237 AC. (TO DATE)
 222 AC. RESIDUE



BEARINGS BASED ON THE C OF S.R. 29
 (N 60°20'00\"/>

JEFFERSON INDUSTRIES CORPORATION
 D.B. 277 PG. 406
 60,000 ACRES



LEGEND

- P K NAIL
- 3/4" I.D. IRON PIPE & CAP
STAMPED "RET 6552" (FOUND)
- 5/8" DIA. REBAR & YELLOW
PLASTIC CAP STAMPED
"COTTRILL 6858" (SET)

I HEREBY CERTIFY THAT THIS PLAT
 DEPICTS AN ACTUAL FIELD SURVEY
 PERFORMED BY JAMES R. COTTRILL P.S. #6858
James R. Cottrill DATE 11-4-91

JAMES R. COTTRILL P.S.

8256 S.R.207 N.E. MT. STERLING, OHIO 43143 PH. (614) 869-3811

PLAT OF

15,000 ACRES, VMS 12143 & 10929,
 VILLAGE OF WESTJEFFERSON,
 MADISON COUNTY, OHIO.

DATE:
 11-4-91

SCALE: 1" = 200'
 200' 100' 0 200'

104-91