

BEARINGS BASED ON THE \square OF DYER ROAD (N 55°58'58"E) AS SHOWN ON P.B. 1 PG. 463.

ROBERT L. MYERS
D.B. 255 PG. 704
156.5 AC.

CURVE DATA

(FROM P.B. 1 PG. 463)
PI = 19+46.52
 $\Delta = 63^\circ 41' 50''$ $\Delta_c = 47^\circ 41' 50''$
Dc = 8'00" $\square_s = 8'00''$
Rc = 716.20' P = 2.33'
Ts = 546.28' K = 99.93'
Lc = 596.22' Xc = 199.61'
Ls = 200.00' Yc = 9.30'
Es = 129.68'

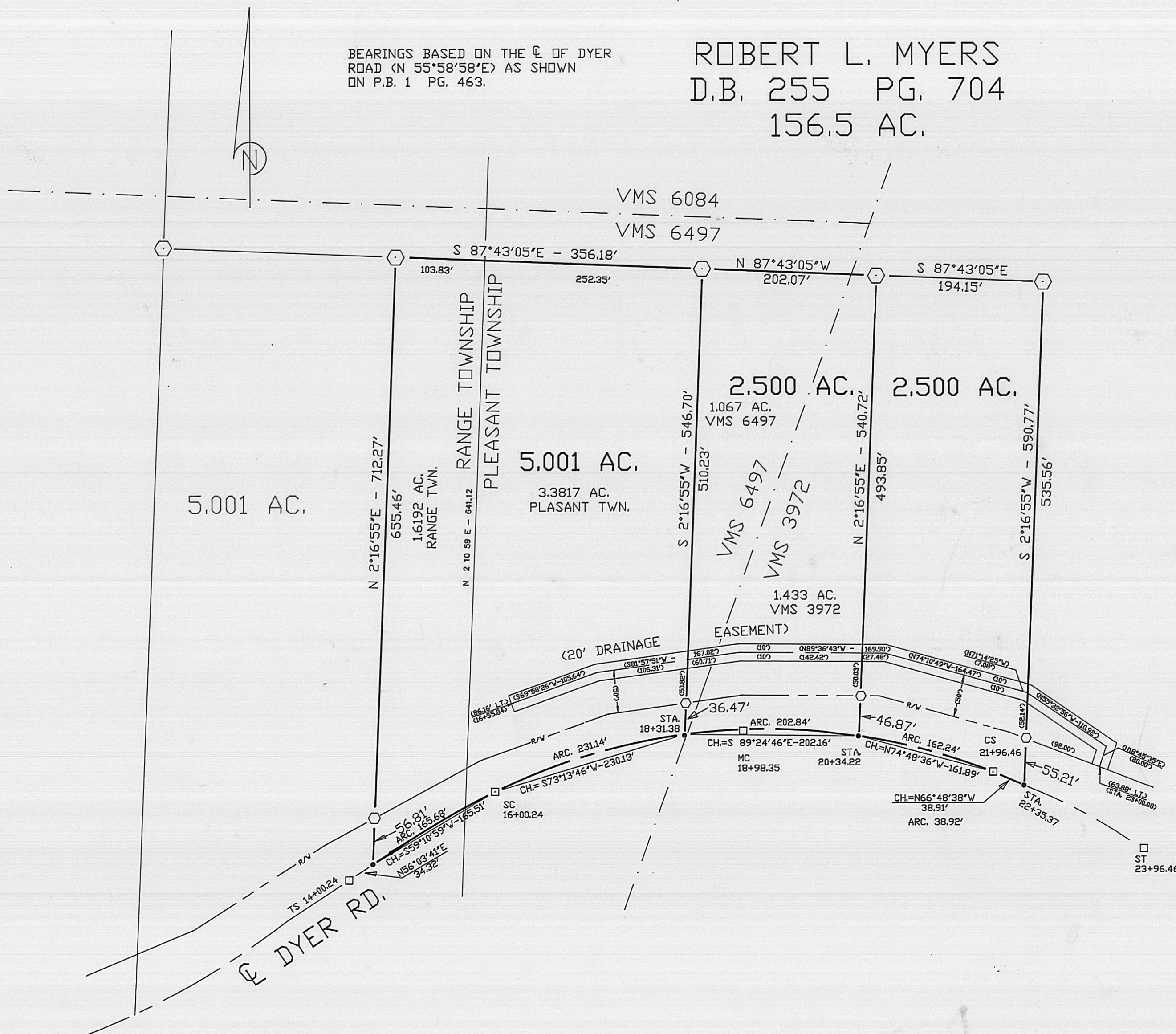
LEGEND

- \square \square MONUMENT BOX
- P K NAIL (SET)
- \square 5/8" DIA. REBAR & YELLOW PLASTIC CAP STAMPED "COTTRILL 6858" (SET)

NOTES

TOWNSHIP LINE COMPUTED FROM INTERSTATE HIGHWAY DRAWINGS.

V.M.S. LINES WHERE SCALED FROM TAX MAPS.



JAMES R. COTTRILL P.S.

8256 S.R.207 N.E. MT. STERLING, OHIO 43143 PH. (614) 869-3811

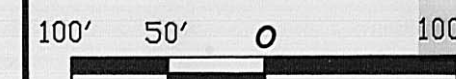
PLAT OF

5.001, 2.500, 2.500 AC., VMS 6497
3972, RANGE & PLEASANT
TOWNSHIP, MADISON COUNTY, OHI

DATE:

3-26-91

SCALE: 1" = 100'



57-91