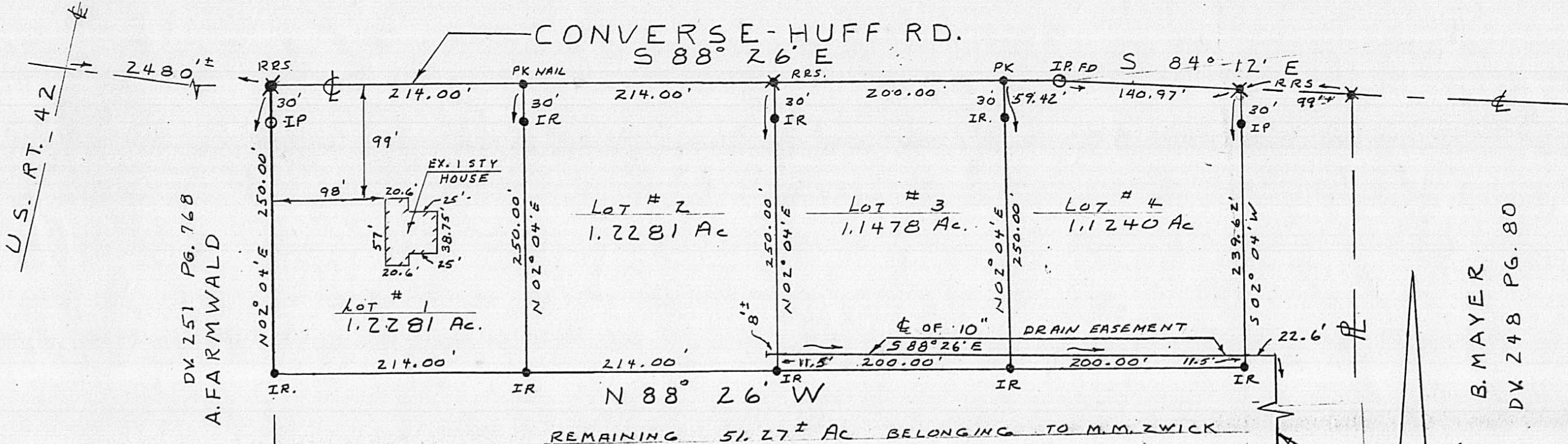


NOTE:  $\phi$  OF 10" DRAIN EASEMENT ADDED ON 9-14-19 BY: M.W. HUGUS - REG SUR #4842



U.S. RT. 42  
 DV 251 PG. 768  
 A. FARMWALD

B. MAYER  
 DV 248 PG. 80

REMAINING 51.27± AC BELONGING TO M.M. ZWICK

Survey Plat Showing

Four lots out of a 56 acre parcel in VMS #7243, Darby Township, Madison County, Ohio as 56 acres is recorded in Certificate of Transfer - Volume 268 pages 833 and 834.

Surveyed for: Mary Martha Zwick  
 Surveyed by: M. W. Hugus

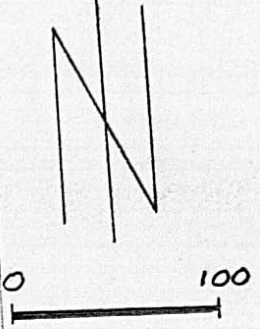
9-29-90  
 Reg. Sur. #4842

O = Iron Pin Found    X = Railroad Spike Set    ● = Iron Rods and PK Nails Set  
 Scale 1"=100'

Notes: Bearings established from Deed Volume 268 page 834.  
 This plat prepared from an actual field survey by  
 M. W. Hugus    Reg. Sur. #4842    9-29-90



SCALE: 1"=100'



908' 501° 52' W  
 575' 54° 18' E  
 540.18' E  
 10" DRAIN EASEMENT  
 WORTH DITCH