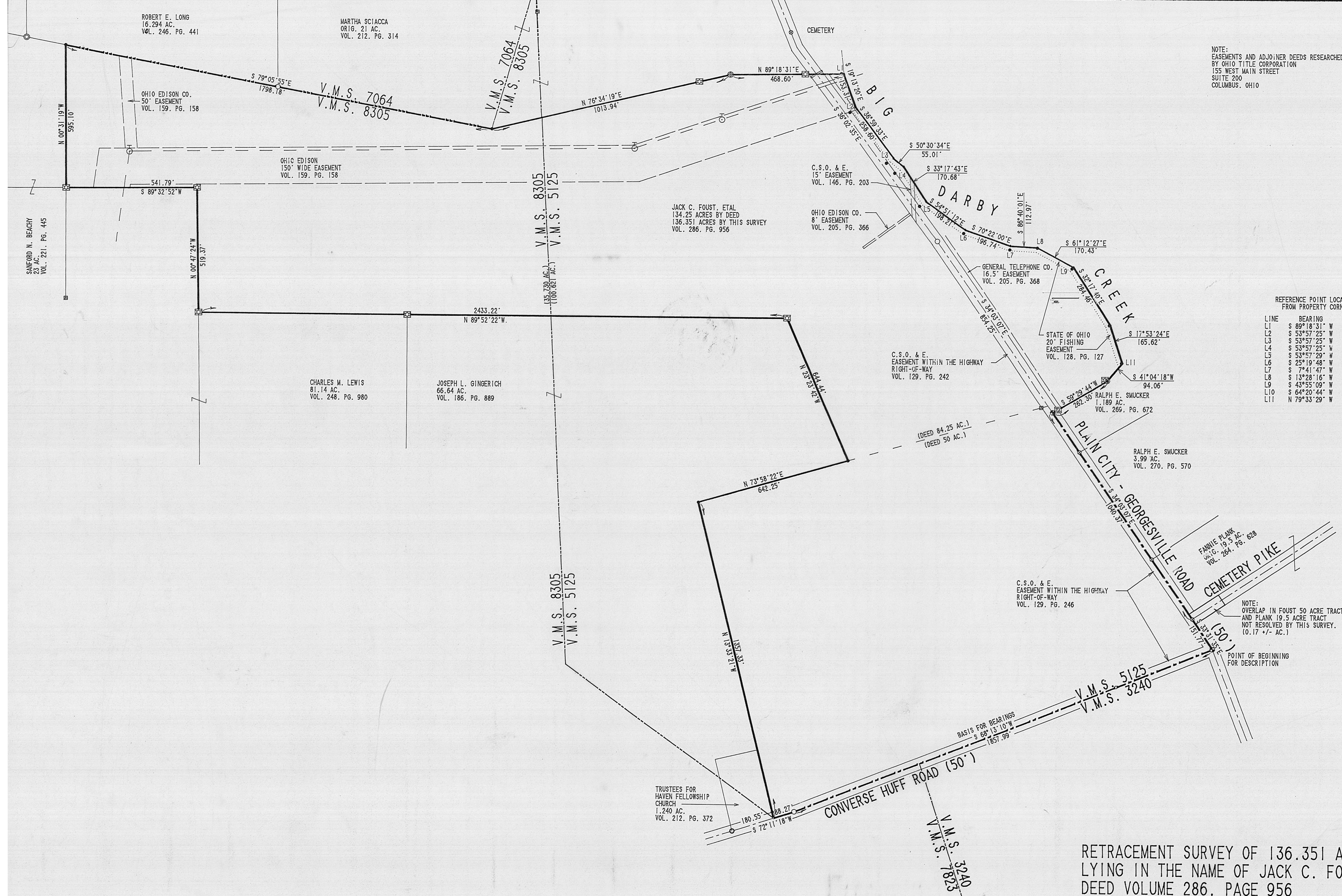
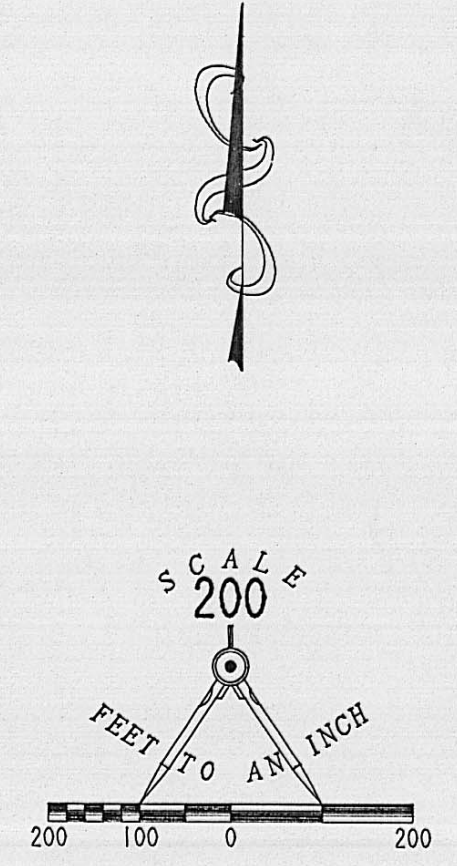


NOTE: EASEMENTS AND ADJACENT DEEDS RESEARCHED BY OHIO TITLE CORPORATION 155 WEST MAIN STREET SUITE 200 COLUMBUS, OHIO



REFERENCE POINT LOCATIONS FROM PROPERTY CORNERS

LINE	BEARING	DISTANCE
L1	S 89° 18' 31" W	10.00'
L2	S 53° 57' 25" W	31.70'
L3	S 53° 57' 25" W	35.70'
L4	S 53° 57' 25" W	45.30'
L5	S 53° 57' 29" W	33.50'
L6	S 25° 19' 48" W	17.00'
L7	S 7° 41' 47" W	17.00'
L8	S 13° 28' 16" W	2.00'
L9	S 43° 55' 09" W	9.00'
L10	S 64° 20' 44" W	4.00'
L11	N 79° 33' 29" W	4.00'

- LEGEND
- NAIL FOUND
 - ⊠ CONCRETE FENCE POST FOUND
 - ⊙ 6" STEEL POST FOUND
 - ⊙ RAILROAD SPIKE FOUND
 - ⊙ 3/4" IRON ROD FOUND
 - ⊙ 5/8" PIPE FOUND
 - ⊙ 5/8" IRON ROD FOUND
 - ⊙ 3/4" PIPE FOUND
 - ⊠ WOOD FENCE POST
 - ⊙ 1-1/2" PIPE FOUND
 - ⊙ 3/4" IRON ROD SET
 - ⊙ RAILROAD SPIKE SET
 - ⊙ ELECTRIC POLE

NOTE: OVERLAP IN FOUST 50 ACRE TRACT AND PLANK 19.5 ACRE TRACT NOT RESOLVED BY THIS SURVEY. (0.17 +/- AC.)

RETRACEMENT SURVEY OF 136.351 ACRES LYING IN THE NAME OF JACK C. FOUST, ETAL DEED VOLUME 286, PAGE 956 V.M.S. 5125 AND V.M.S. 8305 DARBY TOWNSHIP MADISON COUNTY, OHIO

SURVEYED BY:
JEFFREY I. LEE
PROFESSIONAL SURVEYOR 6359
DECEMBER 1991
LEE SURVEYING & MAPPING CO.
143 East Columbus Avenue
BELLEFONTAINE, OHIO 43311
(513) 593-7335

Lying in V.M.S. 5125 and V.M.S. 8305, Darby Township, Madison County, Ohio.

Being all of that 50.0 acre tract lying west of the Plain City - Georgesville Road and all of that 84.25 acre tract lying in the name of Jack C. Foust, etal as deeded and described in Volume 286, Page 956 of the Madison County Records of Deeds and being more particularly described as follows:

Beginning at a railroad spike set on the intersection of center-lines of the Plain City - Georgesville Road (50 feet wide) and the Converse Huff Road (50 feet wide).

THENCE, with the center-line of the Converse Huff Road, S 68°-13'-10" W, a distance of 1857.99 feet to a 3/4 inch iron rod found.

THENCE, continuing with the center-line of the Converse Huff Road, S 72°-11'-18" W, a distance of 88.27 feet to a nail found.

THENCE, with the lines of the Joseph L. Gingerich 66.64 acre tract (Vol. 186, Pg. 189) the following three courses:

N 13°-33'-21" W, a distance of 1357.33 feet to a 3/4 inch iron rod set.

N 73°-58'-22" E, a distance of 642.25 feet to a 3/4 inch iron rod set.

N 23°-23'-42" W, a distance of 644.44 feet to the center of a concrete fence post found.

THENCE, with the north lines of the said 66.64 acre tract and the Charles M. Lewis 81.14 acre tract (Vol. 248, Pg. 980), N 89°-52'-22" W, a distance of 2433.22 feet to the center of a concrete fence post found.

THENCE, with the lines of the said 81.14 acres the following two courses:

N 0°-47'-24" W, a distance of 519.37 feet to the center of a concrete fence post found.

S 89°-32'-52" W, a distance of 541.79 feet to the center of a concrete fence post found.

THENCE, with the east line of the Sanford N. Beachy 23.0 acre tract (Vol. 221, Pg. 445), N 0°-31'-19" W, a distance of 595.10 feet to a 3/4 inch iron rod set.

THENCE, with the southerly lines of the Robert E. Long 16.294 acre tract (Vol. 246, Pg. 441) and the Martha Sciacca original 21.0 acre tract (Vol. 212, Pg. 314), S 79°-05'-55" E, a distance of 1798.18 feet to a 3/4 inch iron rod set.

THENCE, with the southerly lines of the said 21.0 acre tract the following two courses:

N 76°-34'-19" E, a distance of 1013.94 feet to a 6 inch round steel post found.

N 89°-18'-31" E, a distance of 468.60 feet to a point, passing a 3/4 inch iron rod set for reference at 458.60 feet.

THENCE, with the low water line of the westerly side of the Big Darby Creek the following ten courses:

S 19°-13'-20" E, a distance of 153.31 feet to a point referenced by a 3/4 inch iron rod set S 53°-57'-25" W, a distance of 31.70 feet.

S 36°-59'-33" E, a distance of 258.60 feet to a point referenced by a 3/4 inch iron rod set S 53°-57'-25" W, a distance of 35.70 feet.

S 50°-30'-34" E, a distance of 55.01 feet to a point referenced by a 3/4 inch iron rod set S 53°-57'-25" W, a distance of 45.30 feet.

S 33°-17'-43" E, a distance of 170.68 feet to a point referenced by a 3/4 inch iron rod set S 53°-57'-29" W, a distance of 33.50 feet.

S 54°-51'-12" E, a distance of 198.21 feet to a point referenced by a 3/4 inch iron rod set S 25°-19'-48" W, a distance of 17.00 feet.

S 70°-22'-00" E, a distance of 196.74 feet to a point referenced by a 3/4 inch iron rod set S 7°-41'-47" W, a distance of 17.00 feet.

S 86°-40'-01" E, a distance of 112.97 feet to a point referenced by a 3/4 inch iron rod set S 13°-28'-16" W, a distance of 2.00 feet.

S 61°-12'-27" E, a distance of 170.43 feet to a point referenced by a 3/4 inch iron rod set S 43°-55'-09" W, a distance of 9.00 feet.

S 32°-17'-40" E, a distance of 284.46 feet to a point referenced by a 3/4 inch iron rod set S 64°-20'-44" W, a distance of 4.00 feet.

S 17°-53'-24" E, a distance of 165.62 feet to a point referenced by a 3/4 inch iron rod set N 79°-33'-29" W, a distance of 4.00 feet.

THENCE, S 41°-04'-18" W, a distance of 94.06 feet to a 1-1/2 inch pipe found.

THENCE, with the northwesterly line of the Ralph E. Smucker 1.189 acre tract (Vol. 269, Pg. 672), S 59°-29'-44" W, a distance of 262.30 feet to a railroad spike set on the center-line of Plain City - Georgesville Road.

THENCE, with the center-line of the Plain City - Georgesville Road the following two courses:


S 34°-03'-07" E, a distance of 1040.37 feet to a railroad spike found at the intersection of center-lines of Plain City - Georgesville Road and Cemetery Road.

S 33°-31'-35" E, a distance of 151.77 feet to the point of beginning.

Containing 136.351 acres of which 100.621 acres is within V.M.S. 5125 and 35.730 acres is within V.M.S. 8305.

The basis for bearings is based upon the center-line of Converse Huff Road being S 68°-13'-10" W, and all other bearings are from angles and distances measured in a field survey by Lee Surveying and Mapping Company in December 1991.

Description prepared by:



Jeffrey L. Lee
Professional Surveyor 6359
December 16, 1991