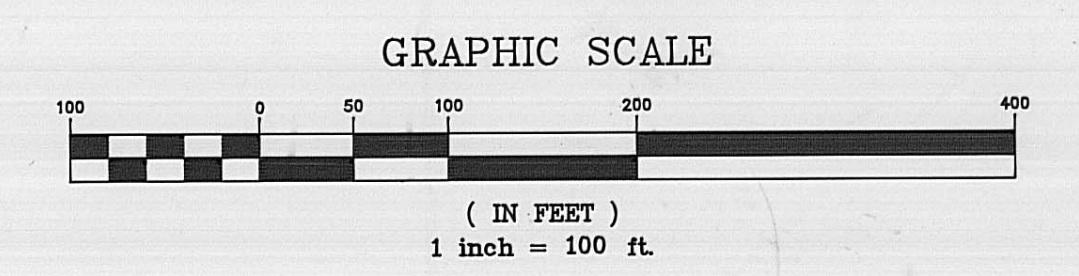
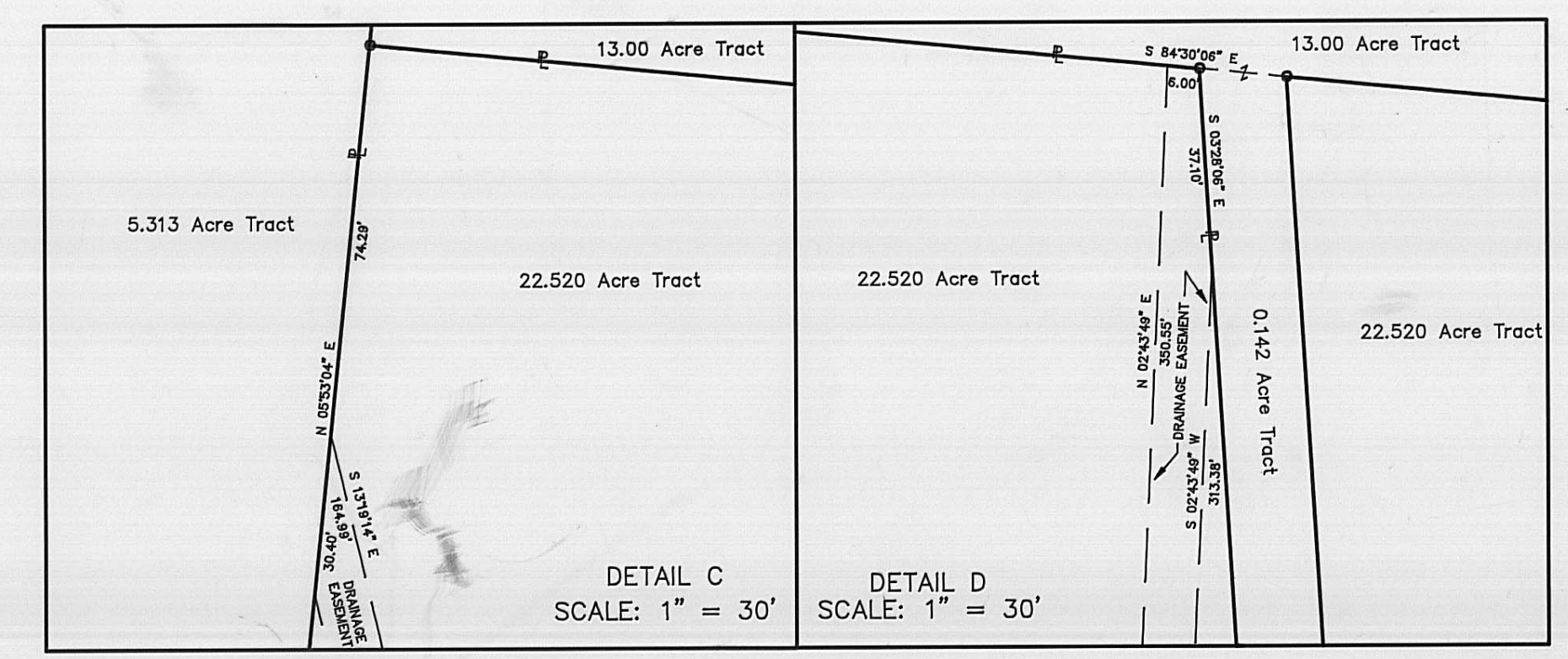
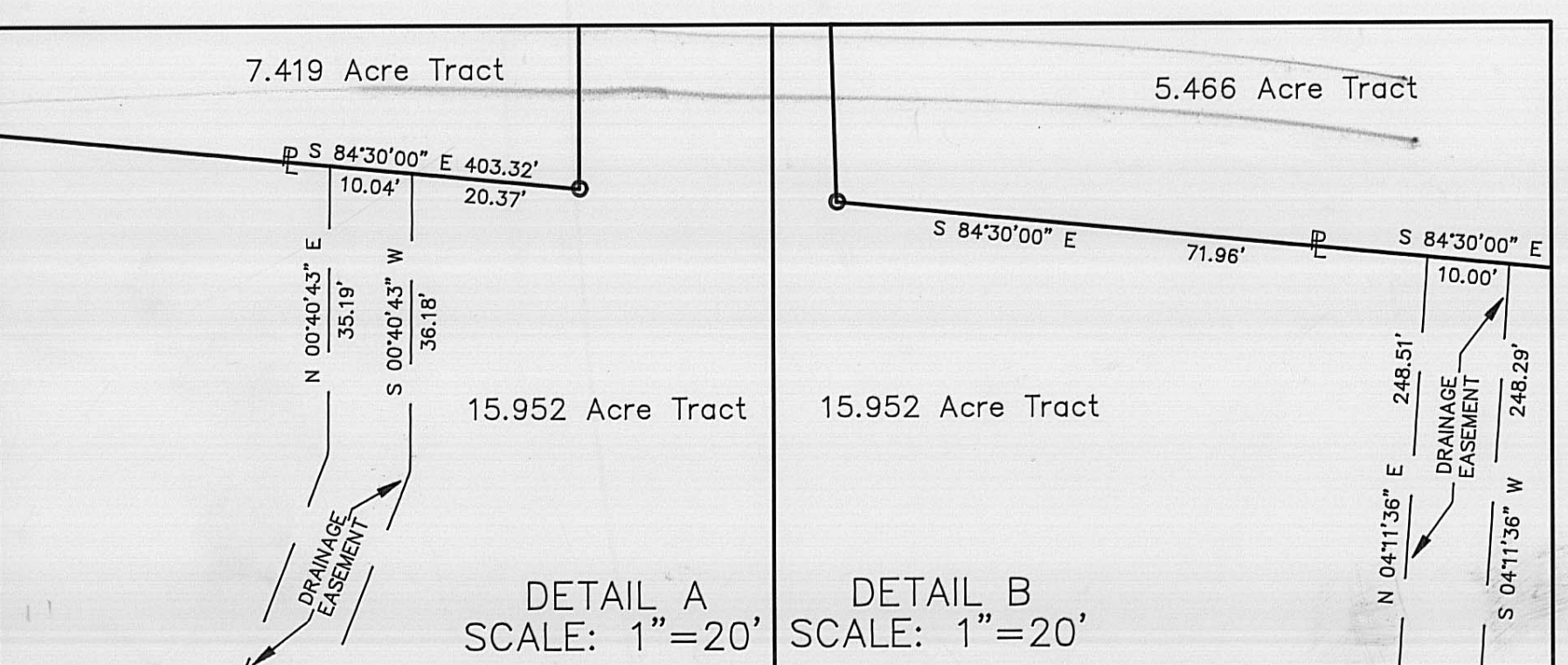


RAYMOND E. & LOIS E. TOOPS
D.V. 193, page 325
150 Acres

Board of Education
of the
Madison Rural School District
D.V. 140, page 341
13.00 Acres
0.142 Acres

RONALD E. & JANE ANN
FORREST
D.V. 221, p. 19
First Tract
60.38 Acres

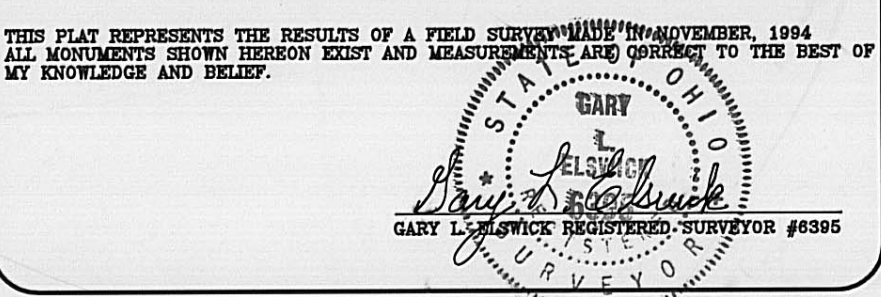
RAYMOND E. & LOIS E. TOOPS
D.V. 193, page 325
150 Acres



PLAN SHOWING SURVEY OF
5.313 Acre, 5.466 Acre,
7.419 Acre, 15.952 Acre
And 22.520 Acre Tracts
For
Harold and Ruth Spegal

FIRST CONSULTING
LAND SURVEYORS
614-777-1888
FAX 614-777-1872

NOTE:
ORIGINAL 73.24 ACRE TRACT
DEED VOLUME 291, PAGE 714



SCALE:
PLAN: 1"=100'
X-SECTION:

DRAWN BY: GLE
CHECKED BY: GLE
SURVEYOR: GLE

DATE: 12/21/94
DATE:
FIELD BOOK:

REVISIONS:		
DATE	BY:	WHY:

LOCATION: UNION TWP.
COUNTY: MADISON
STATE: OHIO

DRAWING #:
MAD-42-94

SHEET
1
1 OF 1

MADISON COUNTY SURVEY #
35-95