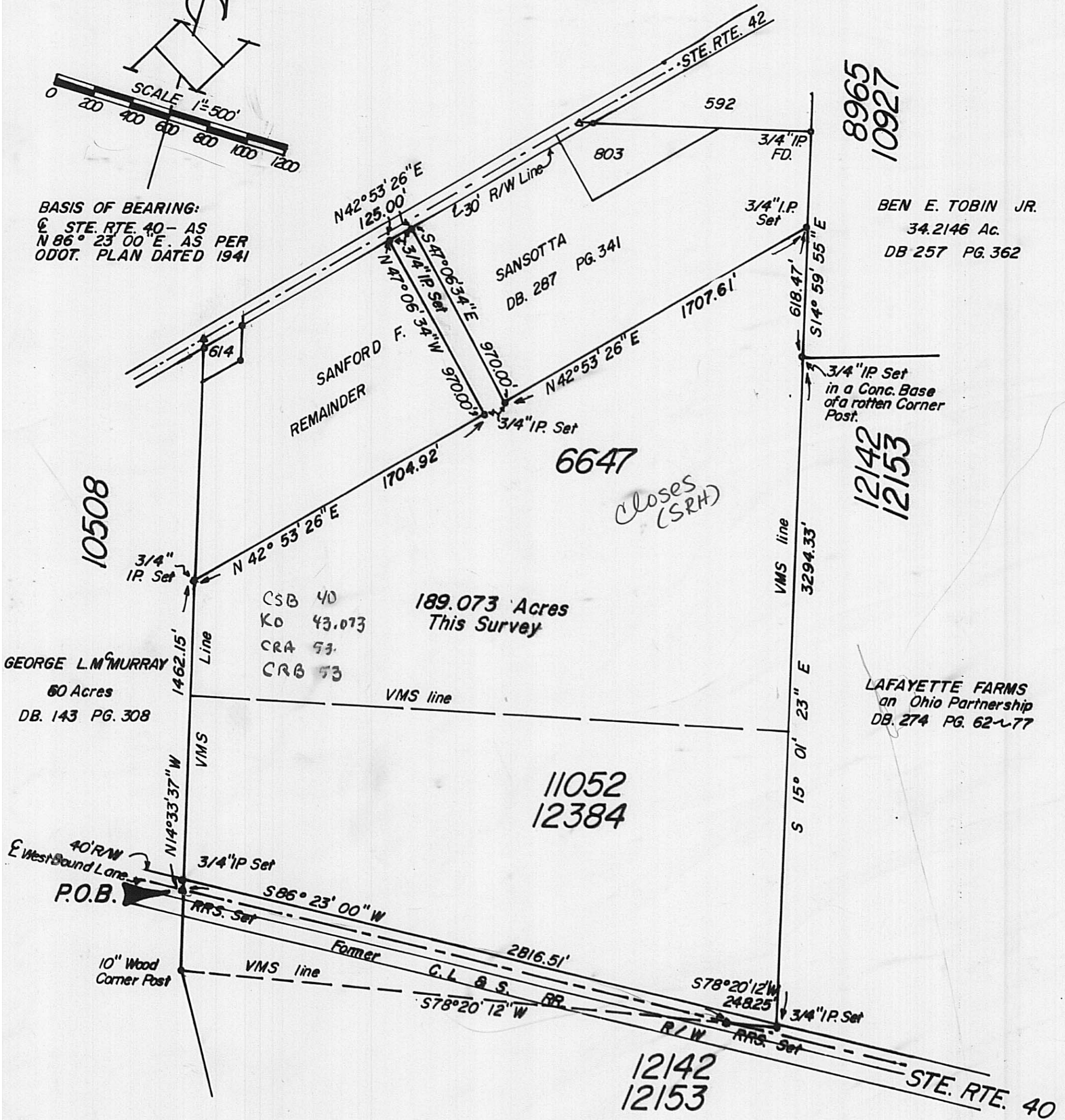




BASIS OF BEARING:
E. STE. RTE. 40 - AS
N 86° 23' 00" E. AS PER
ODOT. PLAN DATED 1941



BEN E. TOBIN JR.
34.2146 Ac.
DB 257 PG. 362

12142
12153

LAFAYETTE FARMS
an Ohio Partnership
DB. 274 PG. 62-77

SURVEY OF 189.073 ACRES

IN V.M.S. 6647, 11052 AND 12384, IN
DEERCREEK TWP., MADISON COUNTY,
STATE OF OHIO: FOR

PAUL FLUCKE



HAINES SURVEYORS
354 Kessler Street
Groveport, Ohio 43125
Phone: 837-2181

I hereby certify that the plot shown hereon was performed on actual field
survey, under my supervision and that said plot correctly represents said survey.

DATE 8-30-95
REVISOR Louis J. Haines
REVISED 9-6-95

Situated in the Township of Deercreek, County of Madison, State of Ohio, in Virginia Military Surveys 6647, 11052 and 12384 and being a part of the lands conveyed to Stamford F. Sansotta, as recorded in Deed Book 287, page 341, Recorder's Office, Madison County, Ohio. More particularly bounded and described as follows:

beginning at a railroad spike set in the center line of U.S.R. 40 and in the westerly line of V.M.S. #'s 11052 and 12384, being the southwesterly corner of the Sansotta lands and the southeasterly corner of the George L. McMurray 60 acre tract, D. B. 143, PG. 308, thence North 14 degrees 33 minutes 37 seconds West, 1462.15 feet, with the aforesaid property and V.M.S. line, to a 3/4 inch pipe set in said line;

thence North 42 degrees 53 minutes 26 seconds East, 1704.92 feet, parallel with the southerly right-of-way line of S.R. 42, to a 3/4 inch pipe set;

thence North 47 degrees 06 minutes 34 minutes West, 970.00 feet to a 3/4 inch pipe set in the southerly right-of-way line of S.R. 42;

thence North 42 degrees 53 minutes 26 seconds East, 125.00 feet with the southerly right-of-way line of S.R. 42, to a 3/4 inch pipe set in said line;

thence South 47 degrees 06 minutes 34 seconds East, 970.00 feet, to a 3/4 inch pipe set;

thence North 42 degrees 53 minutes 26 seconds East, 1707.61 feet, parallel to the southerly right-of-way line of S.R. 42, to a 3/4 inch pipe set in the easterly line of the Sansotta lands and V.M.S. 6647, in the westerly line of the Ben E. Tobin 34.2146 acre tract, D.B. 257, Pg. 362;

thence South 14 degrees 59 minutes 55 seconds East, 618.47 feet, with the aforesaid V.M.S. and property line, to a 3/4 inch pipe set in a concrete base of a rotted corner post at the southwesterly corner of the aforesaid 34.2146 acre tract, also being the northwesterly corner of the Lafayette Farms 101.89 acre tract, D.B. 274, Pg. 62-77;

thence South 15 degrees 01 minute 23 seconds East, 3294.33 feet, with the line between the Sansotta and Lafayette Farms tracts, on the V.M.S. line, to a 3/4 inch pipe set in U.S.R. 40, at the southeasterly corner of the Sansotta Lands and V.M.S. #'s 11052 and 12384;

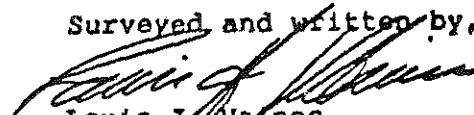
thence South 78 degrees 20 minutes 12 seconds West, 248.25 feet, with the southerly line of the aforesaid V.M.S. to a railroad spike set in the center line of U.S.R. 40;

thence South 86 degrees 23 minutes 00 seconds West, 2816.51 feet, with the center line of U.S.R. 40, to the place of beginning;

containing 189.073 acres, be the same more or less, of which 80 acres lies in tax parcel 347 and 109.073 lies in tax parcel 346, subject to all legal easements, restrictions and conditions, as the same may be of record. U.S.R. 40 Occupies 2.717 acres.

Bearings used for this survey are based on the center line of U.S.R. 40, being North 86 degrees 23 minutes 00 seconds East, as established by the Ohio Department of Highways, 1941 Plans.

Surveyed and written by,



Louis J. Haines
Ohio Surveyor 7205