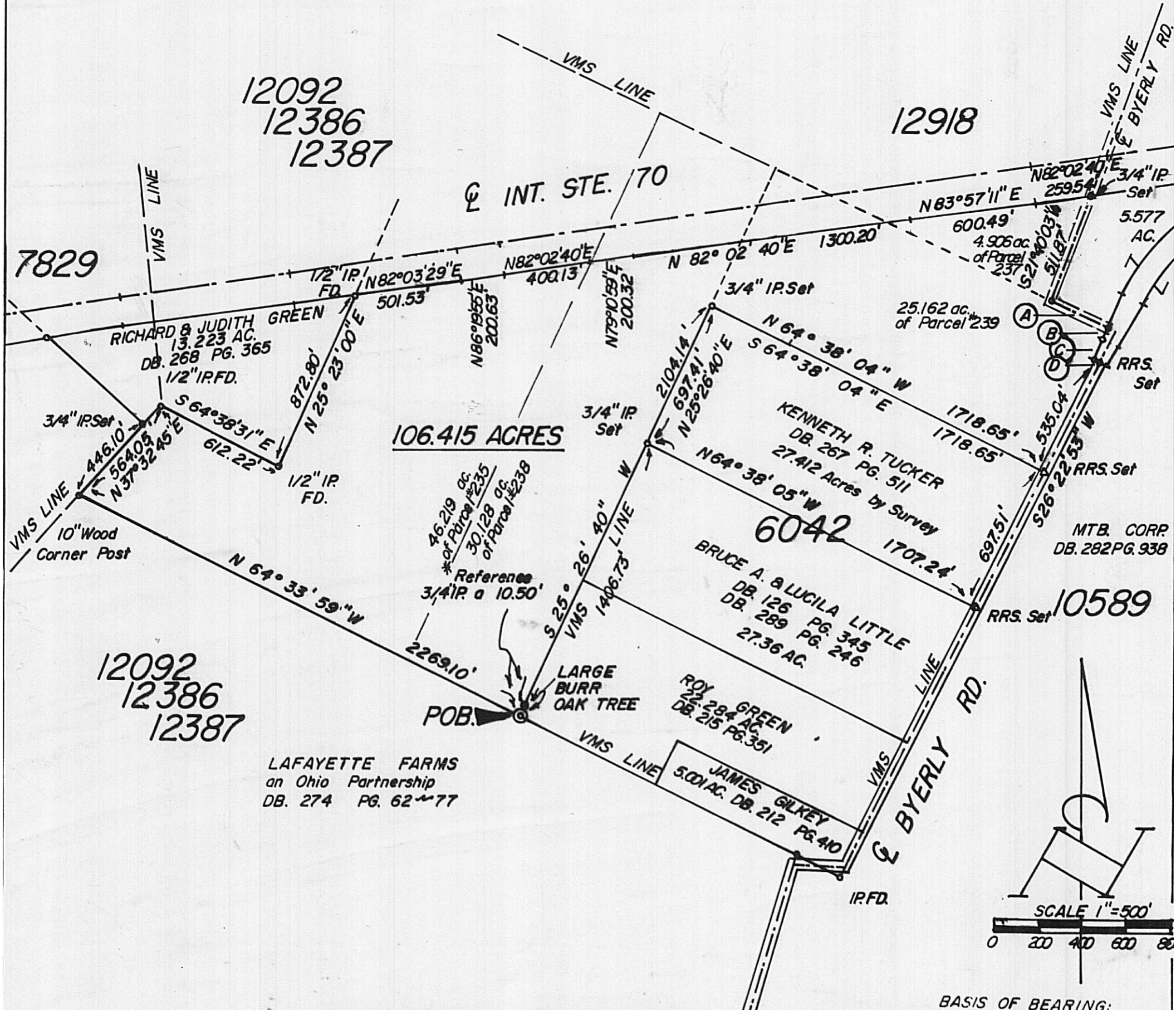


- (A) - S 64° 37' 38" E 289.48'
- (B) - S 23° 26' 03" W 57.26'
- (C) - S 20° 14' 37" W 100.50'
- (D) - S 64° 02' 45" E 28.82'



LAFAYETTE FARMS
an Ohio Partnership
DB. 274 PG. 62-77

SURVEY OF TWO TRACTS
IN VMS 12092, 12386, 12387, 12918
AND 6042, JEFFERSON TOWNSHIP,
MADISON COUNTY, STATE OF OHIO:
FOR

PAUL FLUCKE



BASIS OF BEARING:
E. STE. RTE. 40 AS PER
N 86° 23' 00" E. AS PER
ODOT. PLAN DATED 1941

Ko - 45% = 47.886 ac
CsB - 55% = 58.528 ac.



HAINES SURVEYORS
354 Kessler Street
Groveport, Ohio 43125
Phone: 837-2181

I hereby certify that the plat shown hereon was performed in an actual field survey, under my supervision and that said plat correctly represents said survey.

DATE 8-30-95 SIGNED [Signature]

Situated in the Township of Jefferson, County of Madison, State of Ohio, in Virginia Military Surveys, 12092, 12386, and 12387 and being a part of the lands conveyed to Cecil E. and Opal I. Flannery, as recorded in Deed Book 288, pages 749, Recorder's Office, Madison County, Ohio. More particularly bounded and described as follows:

beginning at a 48 inch Burr Oak, called for and found at the southeasterly corner of the above mentioned Flannery lands, from which a 3/4 inch pipe bears North 25 degrees 26 minutes 40 seconds West, 10.50 feet, said tree being the southwesterly corner of V.M.S. # 6042 and a corner of V.M.S. #'s 12092, 12386, and 12387, in the northerly line of the Lafayette Farms lands D.B. 274, Pg. 62-77, also being the southwesterly corner of the 22.284 acre Roy Green tract, D. B. 215, PG. 351, thence North 64 degrees 33 minutes 59 seconds West, 2269.10 feet, with the northerly line, of said Lafayette Farms lands, to an 10 inch wooden corner post a common corner of the aforesaid tracts and in a northwesterly line of V.M.S. # 7829;

thence North 37 degrees 32 minutes 45 seconds East, 564.05 feet, with the westerly line of the aforesaid V.M.S. on the line between the aforesaid Flannery and Lafayette Farms lands and the southerly line of the Richard and Judith Green 13.223 acre tract, to a 1/2 inch iron pipe found at an angle in said line;

thence South 64 degrees 38 minutes 31 seconds East, 612.22 feet, continuing with the southerly line of the aforesaid 13.223 acre tract, to a 1/2 pipe found at the southeasterly corner of said tract;

thence North 25 degrees 23 minutes 00 seconds East, 872.80 feet, with the easterly line of the aforesaid 13.223 acre tract, to a 1/2 pipe found at the northeasterly corner of said tract and in the southerly limited access right-of-way line of I-70;

thence North 86 degrees 19 minutes 55 seconds East, 200.63 feet, continuing with the southerly line of I-70, to an angle point in said line;

thence North 82 degrees 03 minutes 29 seconds East, 501.53 feet, with the southerly line of I-70, to a point at an angle in said line;

thence North 82 degrees 02 minutes 40 seconds East, 400.13 feet, continuing with the southerly line of I-70, to a point at an angle in said line;

thence North 79 degrees 10 minutes 59 seconds East, 200.32 feet, continuing with the southerly line of I-70, to a point at an angle in said line;

thence North 82 degrees 02 minutes 40 seconds East, 1300.20 feet, continuing with the southerly line of I-70, to a point at angle in said line;

thence North 83 degrees 57 minutes 11 seconds East, 600.49 feet, continuing with the southerly line of I-70, to a point at an angle in said line;

thence North 82 degrees 02 minutes 40 seconds East, 259.54 feet, continuing with the southerly line of I-70, to a 3/4 inch pipe set in said line and in the former center line of Byerly, now relocated;

thence South 21 degrees 40 minutes 03 seconds West, 511.87 feet, to a 3/4 inch pipe set at angle in said line and in the northerly line of V.M.S. #6042;

thence South 64 degrees 37 minutes 38 seconds East, 289.48 feet, continuing with the former center line on the aforesaid V.M.S. line to a 3/4 inch pipe set in the westerly line of Byerly Road, as relocated;

thence South 23 degrees 26 minutes 03 seconds West, 57.26 feet, with the westerly line of Byerly Road, to a 3/4 inch pipe set at an angle in said line;

thence South 20 degrees 14 minutes 37 seconds West, 100.50 feet, with the westerly line of Byerly Road, to a 3/4 inch pipe set at an angle in said line;

thence South 64 degrees 02 minutes 45 seconds East, 28.82 feet, to a railroad spike set in the center line of Byerly Road and in the easterly line of V.M.S. # 6042;

thence South 26 degrees 22 minutes 53 seconds West, 535.04 feet, with the center line of Byerly Road and the easterly line of V.M.S. # 6042, to a railroad spike set at the northeasterly corner of the Kenneth R. Tucker 27.36 acre tract, D.B. 267, Pg. 511;

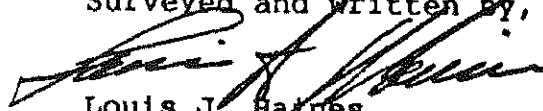
thence North 64 degrees 38 minutes 04 seconds West, 1718.65 feet, with the northerly line of the aforesaid 27.36 acre tract, to a 3/4 inch pipe set at the northwesterly corner of said tract and in the westerly line of V.M.S. 6042;

thence South 25 degrees 26 minutes 40 seconds West, 2104.14 feet, to the place of beginning, passing a 3/4 inch pipe set at 2093.64 feet;

containing 106.415 acres, be the same more or less, subject to all legal easements, restrictions and conditions, as the same may be of record. Byerly Road occupies 0.246 acre.

Bearings used for this survey are based on the center line of U.S.R. 40, being North 86 degrees 23 minutes 00 seconds East, as established by the Ohio Department of Highways, 1941 Plans.

Surveyed and written by,



Louis J. Haines
Ohio Surveyor 7205