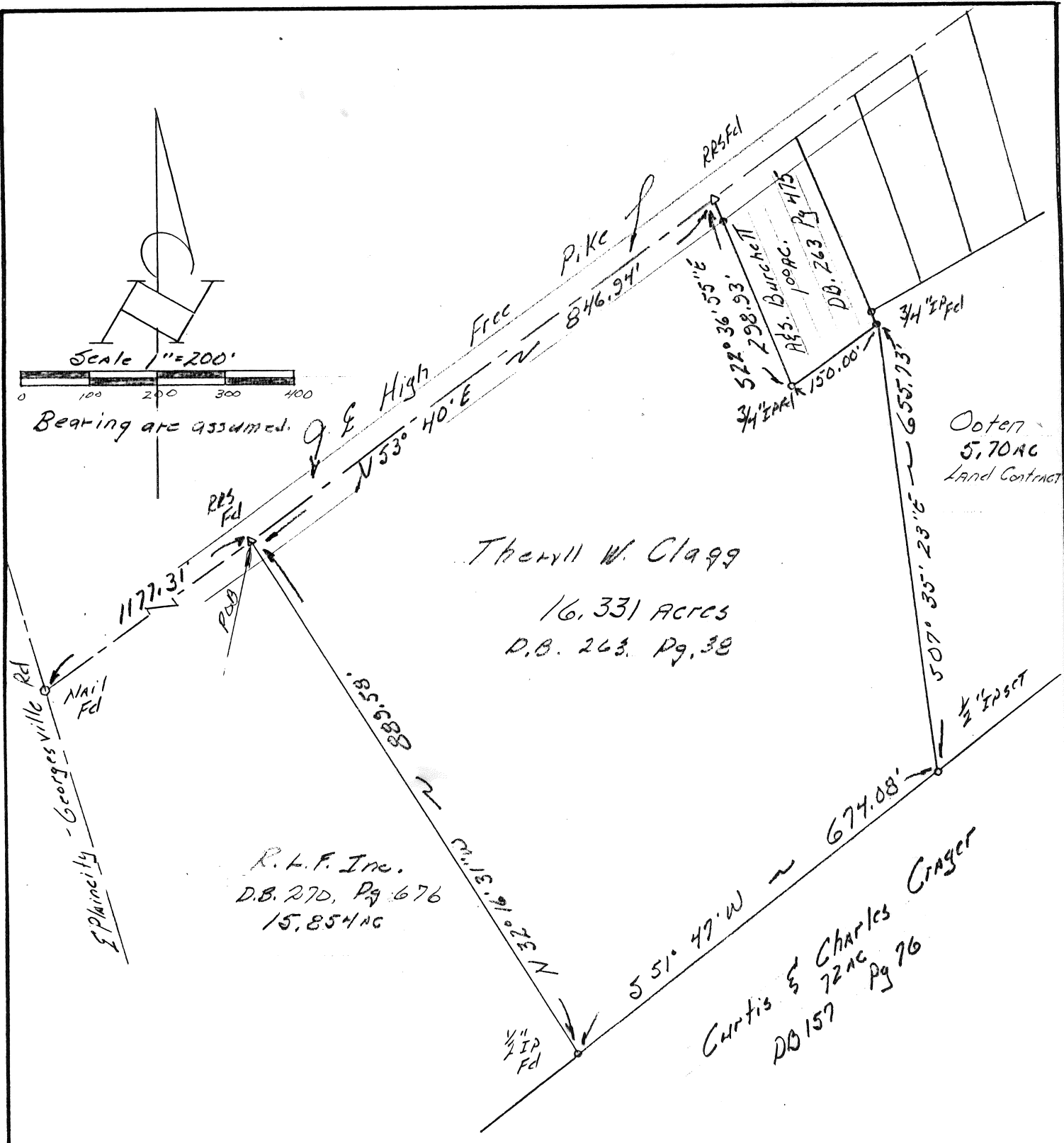


Beating are assumed.



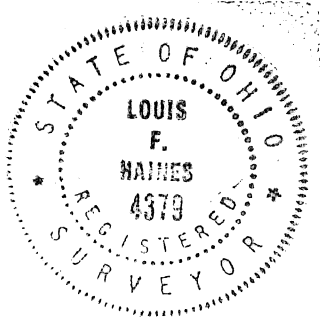
Therell W. Clagg
16.331 Acres
D.B. 263. Pg. 38

R.F. In.
D.B. 270, Pg. 676
15.854 AC

Curtis & Charles Craget
72 AC
Pg. 76
DB 157

Survey of 16.331 Acres
in VMS # 2679, Jefferson Twp.,
Madison Co., Ohio:
For

Therell Clagg



1/98

118A/98



LOUIS F. HAINES
SURVEYOR
354 KESSLER ST. Phone 837-2181
GROVEPORT, OH. 43125

I hereby certify that the plat shown hereon was prepared from an actual field survey, under my supervision and that said plat correctly represents said survey.

DATE: August 3, 1988 SIGNED: Louis F. Haines

Situated in the Township of Jefferson, County of Madison, State of Ohio, in Virginia Military Survey Number 2679, and being a part of a 76.532 acre tract, conveyed to Theryll W. Clagg, as recorded in Deed Book 263, page 38, Recorder's Office, Madison County, Ohio. More particularly bounded and described as follows:

beginning at a bolt set in the North line of the above mentioned 76.532 acre tract, on the center line of the High Free Pike, at at the Northeast corner of the R.F.L. Inc. 15.854 acre tract, D.B.266 Pg.468 thence from said beginning point North 53 degrees 40 minutes East 846.94 feet, along said center and property line, to a railroad spike found in said line, at the Northwest corner of the A. & S. Burchett 1.00 acre tract, D.B.263 Pg.475

thence South 22 degrees 36 minutes 55 seconds East 298.93 feet, along the West line of said 0.792 acre tract, a 1/2 inch pipe found at 30.00 feet to a 3/4 inch pipe found at the southwesterly corner of said 1.00 acre tract;

thence North 53 degrees 40 minutes East 150.00 feet, along the South line of said 1.00 acre tract, to a 3/4 inch pipe found at at the Southeast corner of said 1.00 acre and in the westerly line of a 5.70 acre tract;

thence South 07 degrees 35 minutes 23 seconds East 655.73 feet, with the westerly line of said 5.70 acre tract, to a 1/2 inch pipe found in the southerly line of said 76.532 acre tract and the northerly line of the Curtis & Charles Crager 72 acre tract, D.B. 157, Pg. 76, being the southwesterly corner of said 5.70 acre tract;

thence South 51 degrees 47 minutes West 674.08 feet, along the aforesaid property line, to a 1/2 inch pipe found in said line at the southeasterly corner of the above mentioned 15.854 acre tract;

thence North 32 degrees 16 minutes 31 West 889.58 feet, with the easterly line of said 15.854 acre tract, passing a 3/4 inch pipe found at 859.52 feet, to the place of beginning;

to contain 16.331 acres, be the same more or less and subject to all easements, restrictions and conditions, as the same may be of record.

Bearings used for this description are assumed and relative only to this survey.

Surveyed and written by,

Louis F. Harris