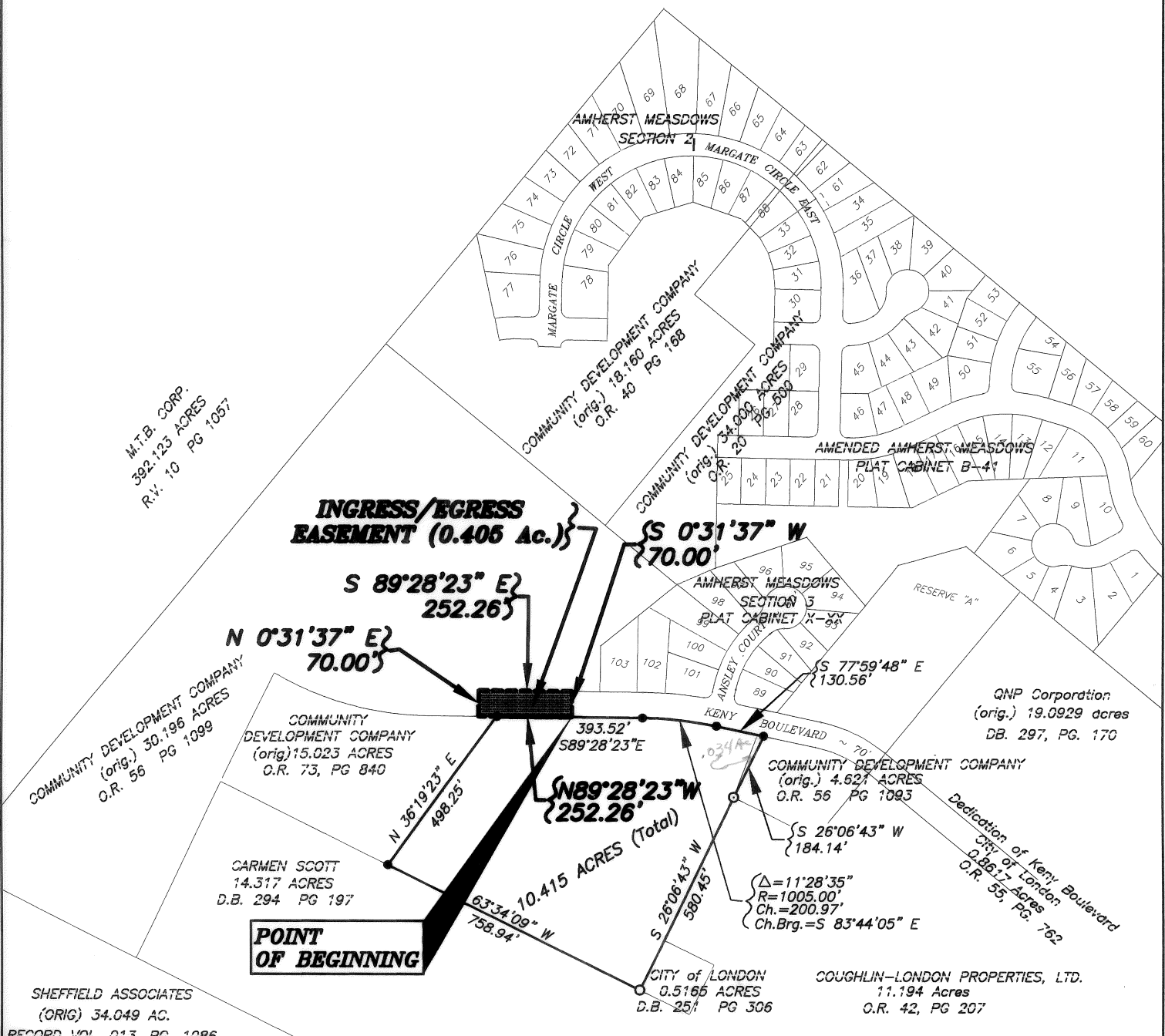


**EXHIBIT OF INGRESS-EGRESS EASEMENT FOR
COMMUNITY DEVELOPMENT COMPANY**

SITUATED IN AND BEING PART OF
VIRGINIA MILITARY SURVEY NO. 5802
CITY OF LONDON, MADISON COUNTY, OHIO



M.T.B. CORP.
392.123 ACRES
R.V. 10 PG 1057

COMMUNITY DEVELOPMENT COMPANY
(orig.) 30.196 ACRES
O.R. 56 PG 1099

COMMUNITY DEVELOPMENT COMPANY
(orig.) 15.023 ACRES
O.R. 73, PG 840

CARMEN SCOTT
14.317 ACRES
D.B. 294 PG 197

POINT OF BEGINNING

SHEFFIELD ASSOCIATES
(ORIG) 34.049 AC.
RECORD VOL. 013, PG. 1086

COMMUNITY DEVELOPMENT COMPANY
(orig.) 18.160 ACRES
O.R. 40 PG 188

COMMUNITY DEVELOPMENT COMPANY
(orig.) 34.000 ACRES
O.R. 25 PG 500

AMHERST MEADOWS SECTION 3
PLAT CABINET X-89

GNP Corporation
(orig.) 19.0929 acres
DB. 297, PG. 170

COMMUNITY DEVELOPMENT COMPANY
(orig.) 4.621 ACRES
O.R. 56 PG 1093

Dedication of Keny Boulevard
City of London
0.9617 Acres
O.R. 55, PG. 762

CITY OF LONDON
0.5166 ACRES
D.B. 251 PG 306

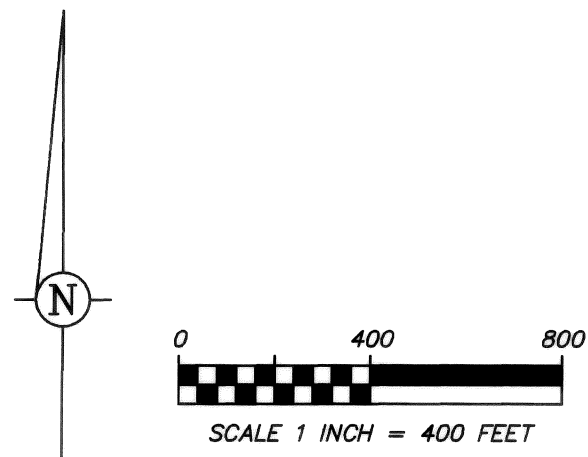
COUGHLIN-LONDON PROPERTIES, LTD.
11.194 Acres
O.R. 42, PG 207

LEGEND

- Iron Pin Found
- Iron Pin Set

I hereby certify that:
The foregoing drawing represents the results of an actual field survey of the premises performed under my responsible supervision and that the said drawing is correct to the best of my knowledge and belief.

Robert E. Blackburn
Robert E. Blackburn
Ohio Professional Surveyor No. 6305
AUGUST 27, 1998 date



| | | | | |
|--|--------------|----------------|-----------------|-----------------|
| Geo-Graphics Inc. Land Surveying & Civil Engineering 685 North James Road Columbus, Ohio 43219 614-231-2016 | | | | |
| EXHIBIT OF INGRESS-EGRESS EASEMENT FOR COMMUNITY DEVELOPMENT COMPANY CITY OF LONDON MADISON COUNTY, OHIO | | | | |
| SCALE 1"=400' | DRAWN 4th | CHECKED REB | DATE 8/27/98 | SHEET 1 OF 1 |

72-98

[[4th]] - F:\1998\98048\8048INGRESS.DWG - AUG 27, 1998 - 09:00:29 - SCALE = 400.00