

COUNTRY ESTATES

John W. Flickinger
Parcel II, 8.038 Acres
D.B. 260, Pg. 421

George Carroll Smith
Tract III, 21.1071 Acres
O.R. 36, Pg. 791

Situated in V.M.S. 6200 & 6204, Township of SOMMERFORD, Madison County, Ohio, containing 28.323 acres and being all of the tract as conveyed to Roger C. Eckart and Patricia L. Eckart and described in OFFICIAL RECORD 65, and PAGE 850, in the Recorder's records of Madison County, Ohio.

We, the undersigned, being the owners of the land herein platted, do hereby voluntarily consent to the execution of the said plat and to dedicate OHIO STATE ROUTE 187 as shown hereon to the public use forever.

Easements shown on this plat are for the construction, operation, maintenance, repair, replacement or removal of water, sewer, gas, electric, telephone or other utility lines or services, storm water disposal and for the express privilege of removing any and all trees or other obstructions to the free use of said easements and for providing ingress and egress to the property for the said purposes and are to be maintained as such forever.

Amy Boeck
WITNESS Amy Boeck

Roger C. Eckart
ROGER C. ECKART

Valerie Hartzler
WITNESS

Patricia L. Eckart
PATRICIA L. ECKART

State of Ohio, Champaign County, S.S.

Be it remembered that on this 12 day of July, 1999, before me, the undersigned, a Notary Public in and for said County and State, personally came

ROGER C. ECKART and PATRICIA L. ECKART

acknowledged the signing and execution of the foregoing plat to be their voluntary act and deed. In testimony whereof, I have set my hand and Notary Seal on the day and date above written.

VALERIE HARTZLER
NOTARY PUBLIC, STATE OF OHIO
My Commission Expires December 14, 2003

Valerie J. Hartzler
Champaign
Notary Public in and for Champaign County, Ohio

I certify that this map is a true and complete survey made by THE THOMAS ENGINEERING & SURVEYING CO., ON MAY, 1999 and that all monuments are set as shown.

Robert G. Watts
ROBERT G. WATTS RPLS # 4138

MADISON COUNTY REGIONAL PLANNING COMMISSION: This plat was approved by

the Madison County Regional Planning Commission on this TENTH day of August, 1999.

Robert G. Watts
Chairman

SOMMERFORD TOWNSHIP ZONING COMMISSION: We, the Sommerford Township Zoning Commission, do hereby approve and accept this plat on this

11 day of August, 1999.

Wallace Ward
Zoning Inspector

COUNTY ENGINEER: I hereby approve this plat and the construction drawings on this

3RD day of August, 1999.

Heidi B. B...
Madison County Engineer

We, the Board of County Commissioners of Madison County, Ohio do hereby approve this plat on this

16 day of August, 1999.

COMMISSIONERS:

Dave Deane
R.C. Markley
Joe W...

I hereby approve this plat on this 2ND day of AUGUST, 1999.

for the MADISON CO. HEALTH DEPT. Michael B...

COUNTY AUDITOR: Transferred on this 18th day of August, 1999.

By B. Crawford Deputy COUNTY AUDITOR Jim Williamson

COUNTY RECORDER:

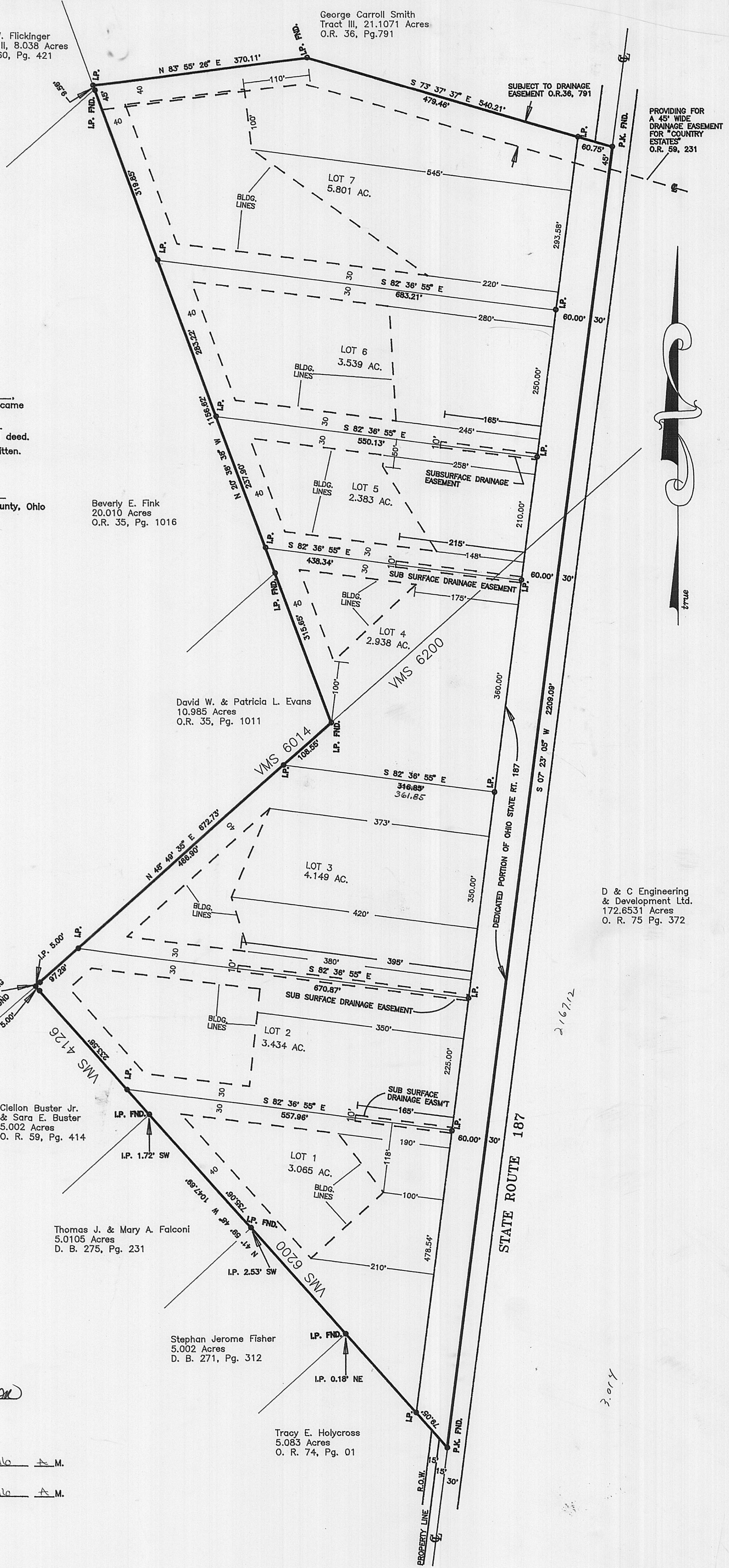
Received on this 18th day of August, 1999 at 10:16 A.M.

Recorded on this 18th day of August, 1999 at 10:16 A.M.

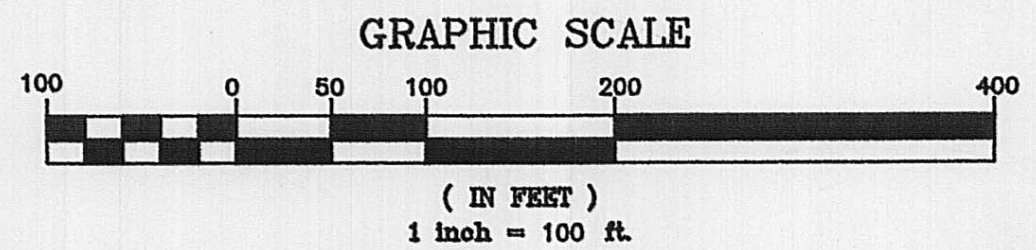
Recorded Slide No. 999650A, B-143. Fee 43.60

Dean Barton
by AB

Drainage Statement:
The Madison County Commissioners assume no legal obligation to maintain or repair any open drainage ditches or channels designated as "drainage easements" on this plat. The easement area of each Lot and all improvements within it shall be maintained continuously by the Lot Owner or by the ditch maintenance program (where applicable). Within the easements, no structure, planting, fencing, culvert, or other material shall be placed or permitted to remain which may obstruct, retard, or divert the flow through the watercourse.



D & C Engineering & Development Ltd.
172.6531 Acres
O. R. 75 Pg. 372



COUNTRY ESTATES

STORM WATER SURFACE PROTECTION GRADING AND PERIMETER DRAIN OUTLET PLAN

SURFACE WATER RUNOFF TO BE DIRECTED WITH LOCAL GRADING TO EXISTING PIPES UNDER S.R. 187 AND/OR EXISTING ROADWAY DITCH.

FARM TILE BELIEVED TO EXIST IN LOW AREAS TO BE LOCATED AND MAINTAINED.

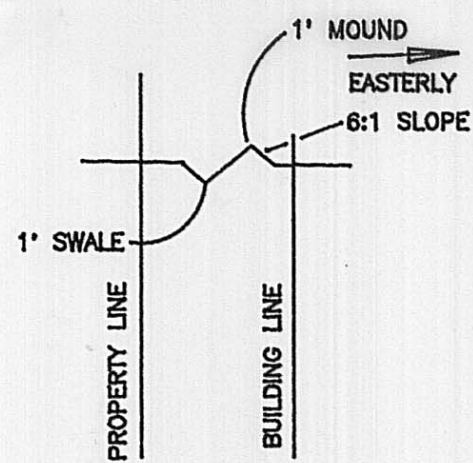
FARM TILE TO BE LOCATED WHEN THE IMPROVEMENTS SHOWN HEREON ARE CONSTRUCTED. ALL WORK SHALL BE AS DIRECTED BY THE ENGINEER.

BOXED ELEVATIONS ARE MINIMUM FINISH GROUND ELEVATION AT DWELLING PERIMETER.

PERIMETER DRAIN OUTLETS TO BE 8" N-12 NON PERFORATED PLASTIC PIPE. INLETS SHOWN FOR INSPECTION AND MAINTENANCE, TOP TO BE 0.4' ABOVE GROUND SURFACE.

INSPECTION INLET

MOUNDING DETAIL



H = 1 INCH = 50 FEET
V = 1 INCH = 10 FEET

ESTIMATE OF QUANTITIES			
ITEM	QUAN.	UNIT	DESCRIPTION
603	1415	LIN FT	10" N-12 NON-PERFORATED POLYETHYLENE DRAIN PIPE
603	1205	LIN FT	8" N-12 NON-PERFORATED POLYETHYLENE DRAIN PIPE
603	4	EA	8" POLYETHYLENE CAPS
603	7	EA	8" X 6" N-12 POLYETHYLENE TEES
603	7	EA	6" POLYETHYLENE CAPS
604	4	EA	12" ADS 2812 AG DRAIN BASIN WITH STD H-20 C.I. GRATE
601	1	LUMP	ROCK CHANNEL PROTECTION TYPE D
	536	LIN FT	PROTECTIVE MOUNDING

