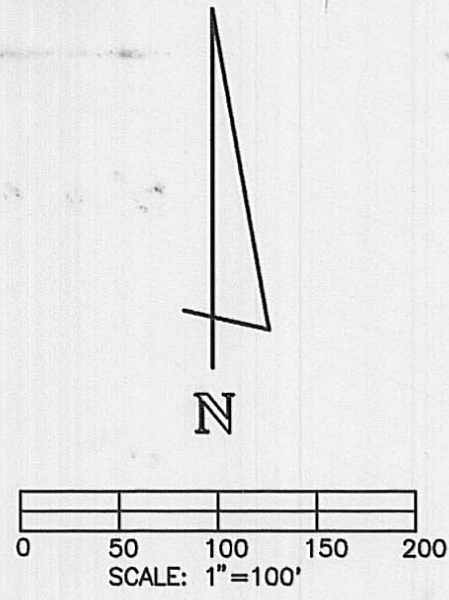


COUNTRY PLACE CONDOMINIUMS PHASE 1

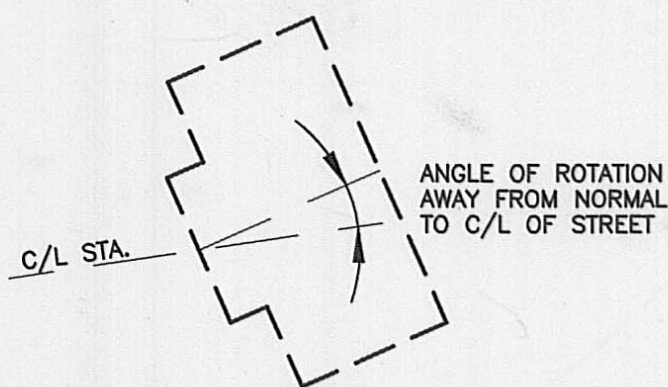
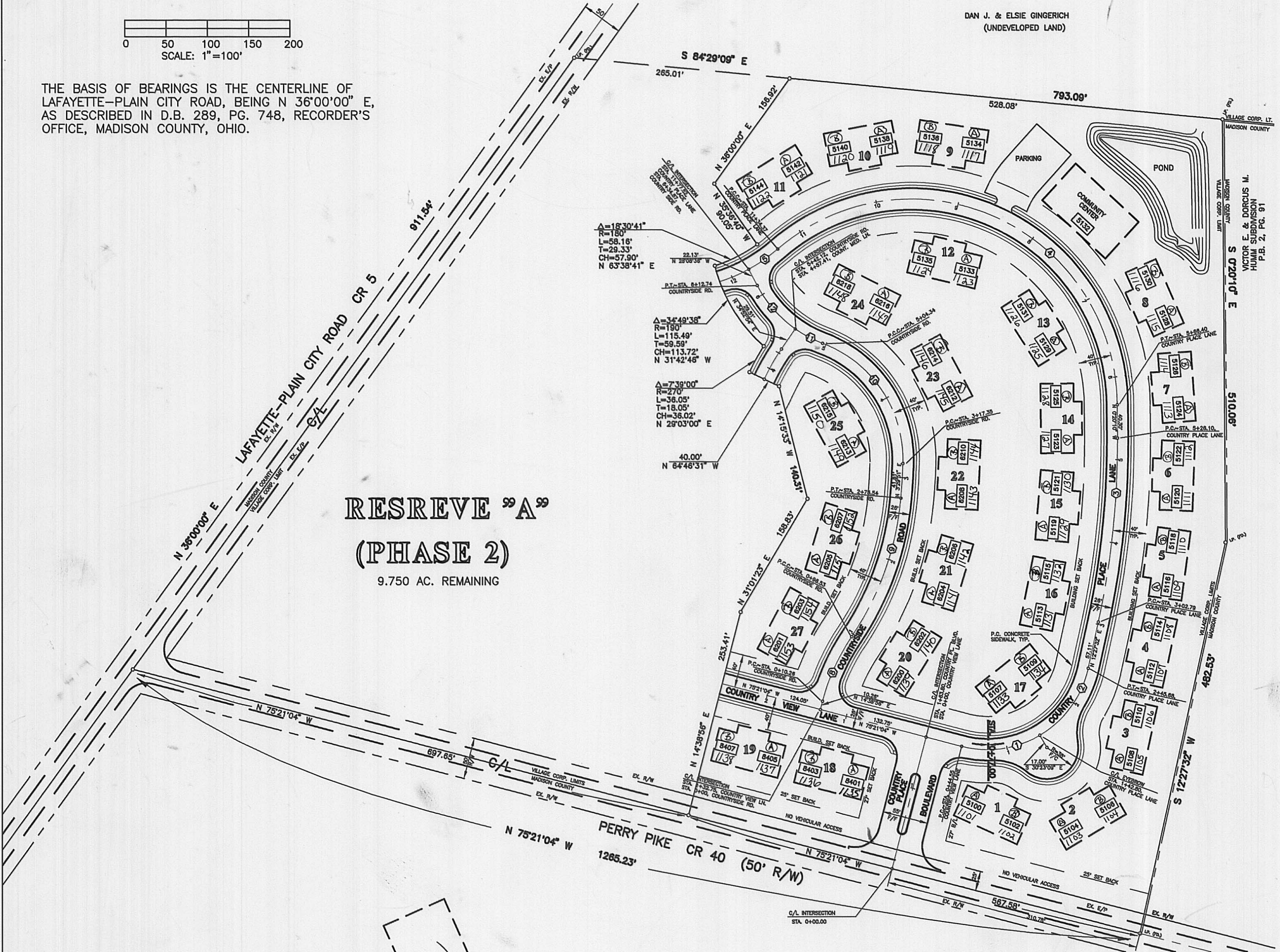
SITE AREA 12.185 AC. OUT OF THAT ORIGINAL 21.935 AC.
OFFICIAL RECORD 97, PAGE 1467
RECORDER'S OFFICE, MADISON COUNTY, OHIO



THE BASIS OF BEARINGS IS THE CENTERLINE OF LAFAYETTE-PLAIN CITY ROAD, BEING N 36°00'00" E, AS DESCRIBED IN D.B. 289, PG. 748, RECORDER'S OFFICE, MADISON COUNTY, OHIO.

DAN J. & ELSIE GINGERICH
(UNDEVELOPED LAND)

RESERVE "A" (PHASE 2) 9.750 AC. REMAINING



BUILDING LOCATION			
LOT NO.	C/L STATION	SETBACK DISTANCE	ROTATION ANGLE
1	0+89.18	52.08'R	0
2	1+42.80	85.00'R	0
3	1+96.28	55.76'R	22°46'05"
4	2+83.87	43.00'R	0
5	3+83.94	43.00'R	0
6	4+83.32	43.00'R	0
7	5+82.27	43.00'R	0
8	6+68.78	43.00'R	0
9	9+19.00	43.00'R	0
10	10+05.26	43.00'R	0
11	10+93.07	43.00'R	0
12	8+93.46	43.95'L	0
13	7+06.12	43.95'L	0
14	5+50.52	43.04'L	0
15	4+38.21	43.54'L	0
16	3+23.42	43.21'L	0
17	1+59.82	45.39'L	0
18	1+00.00	43.00'L	0
19	2+04.04	43.00'L	0
20	1+10.88	43.00'R	0
21	2+04.83	43.00'R	0
22	3+07.43	43.00'R	0
23	3+95.32	43.00'R	0
24	4+87.57	43.00'R	0
25	3+98.08	43.00'L	0
26	2+00.53	43.65'L	0
27	0+70.83	43.00'L	0
COMM. CENT.	7+70.79	40.00'R	0

BUILDING LAYOUT

NOTE:
FOUR OPTIONS ARE AVAILABLE FOR CONDOMINIUM UNITS AS SHOWN ON SHEET 2, ALTHOUGH THE EXACT LOCATION OF THE COMMON WALL BETWEEN UNITS IS AS SPECIFIED HEREON.

LEGEND

- BUILDING NUMBERS **32**
- UNIT ADDRESS **5100**
- LIMITED COMMON AREAS
- ALL AREAS NOT DESIGNATED AS LIMITED COMMON AREAS OR AS UNITS ARE COMMON AREAS.

C/L CURVE DATA						
NO.	Δ	R	T	L	CH.	CH. BEARING
①	45°02'05"	125'	51.82'	98.25'	95.74'	N 82°07'54" E
②	47°09'19"	125'	54.55'	102.88'	100.00'	N 36°02'12" E
③	12°47'42"	1000'	112.12'	223.31'	222.85'	N 6°03'41" E
④	130°10'06"	250'	538.19'	567.97'	453.46'	N 65°25'13" W
⑤	12°21'41"	200'	21.66'	43.15'	43.07'	S 55°40'34" W
⑥	19°46'18"	250'	43.57'	86.27'	85.84'	N 24°32'05" E
⑦	29°18'16"	350'	91.51'	179.01'	177.07'	N 19°46'06" E
⑧	71°25'35"	150'	107.84'	186.99'	175.12'	N 33°50'04" W
⑨	14°25'45"	150'	18.99'	37.78'	37.68'	N 62°19'59" W
⑩	26°58'31"	150'	35.98'	70.62'	69.97'	N 41°37'51" W

ASSOCIATED INFORMATION:

CONDOMINIUM DECLARATION FILED IN
O.R. 113, 358

COVENANTS/BYLAWS FILED IN
O.R. 113, 393
114, 1094

APPROVED:

MADISON COUNTY AUDITOR'S OFFICE.

BY: _____ DATE

BY: _____ DATE

PPN: 04-00812



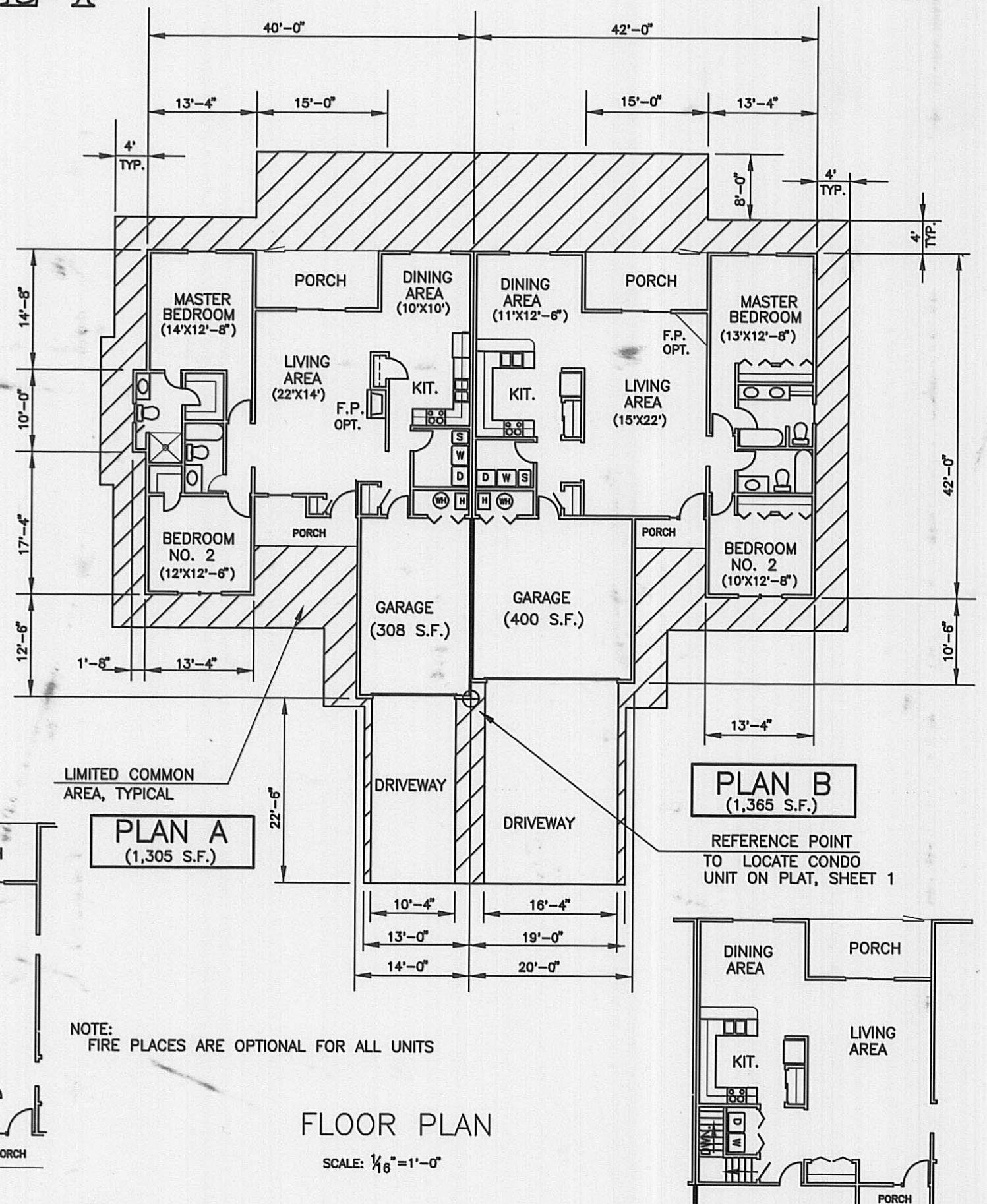
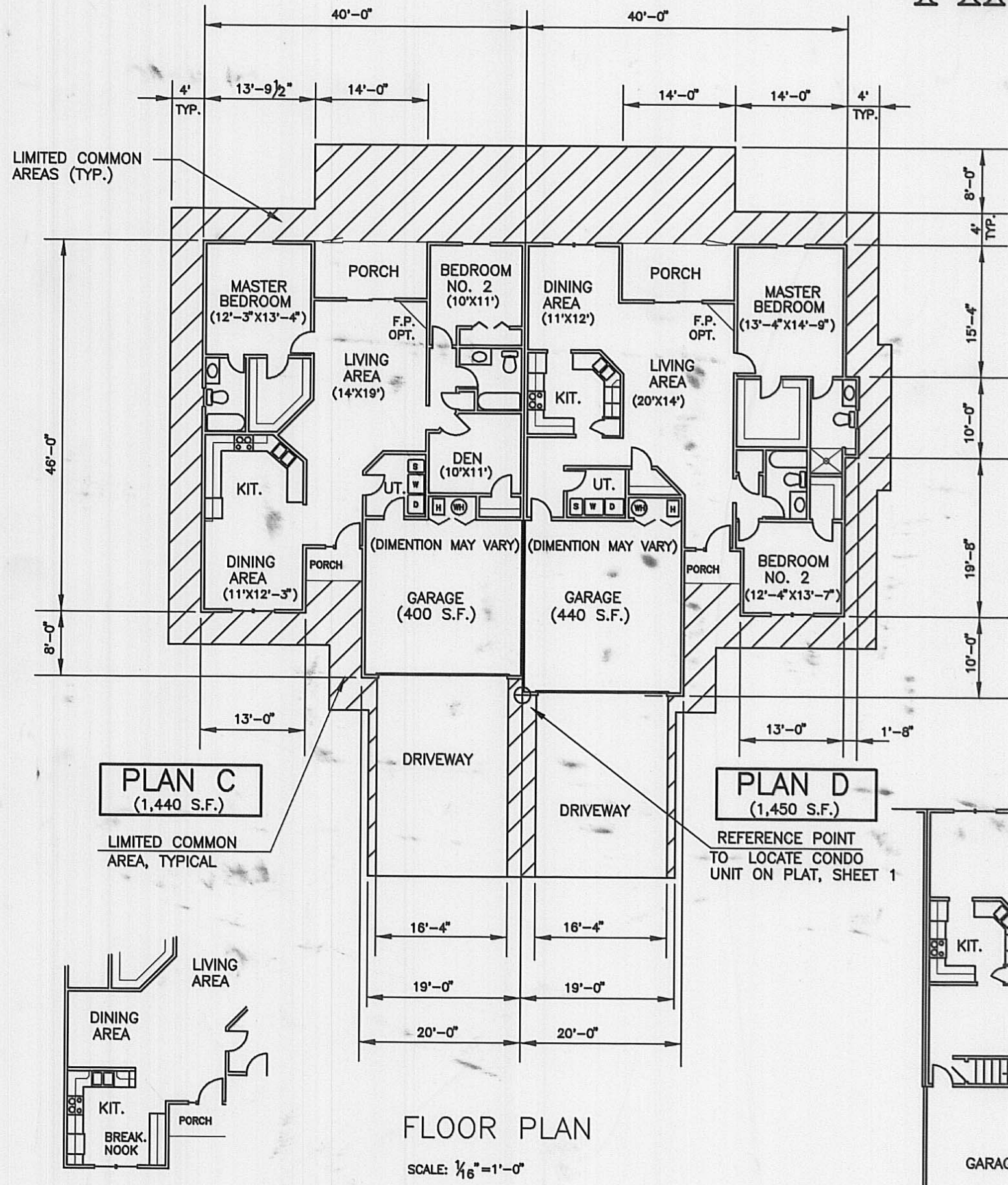
WE DO HEREBY CERTIFY THAT THESE DRAWINGS ACCURATELY SHOW THE PLACEMENT OF THE BUILDINGS AND DRIVES TO BE CONSTRUCTED AS COUNTRY PLACE CONDOMINIUMS, PLAIN CITY, OHIO, AND THAT THERE ARE NO ENCROACHMENTS ON ANY ADJUTING PREMISES.

Charles R. Wolfe
REGISTERED SURVEYOR NO. 6186
DATE 8-10-00

Robert B. Wolfe
REGISTERED ENGINEER NO. 55033
DATE 8-10-00



COUNTRY PLACE CONDOMINIUMS PHASE 1

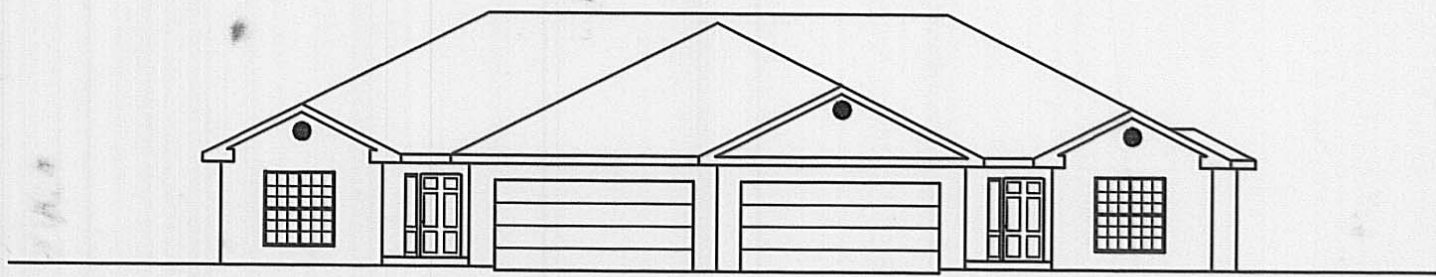


OPTIONAL KITCHEN/DINING AREA FOR FLOOR PLAN C

OPTIONAL BASEMENT PLAN FLOOR PLAN D

NOTE: CONSTRUCTION MAY EMPLOY VARIOUS COMBINATIONS OF THE BASIC FLOOR PLANS SHOWN, I.E. A & D, OR B & C AS WELL AS MIRROR IMAGES OF EACH FLOOR PLAN.

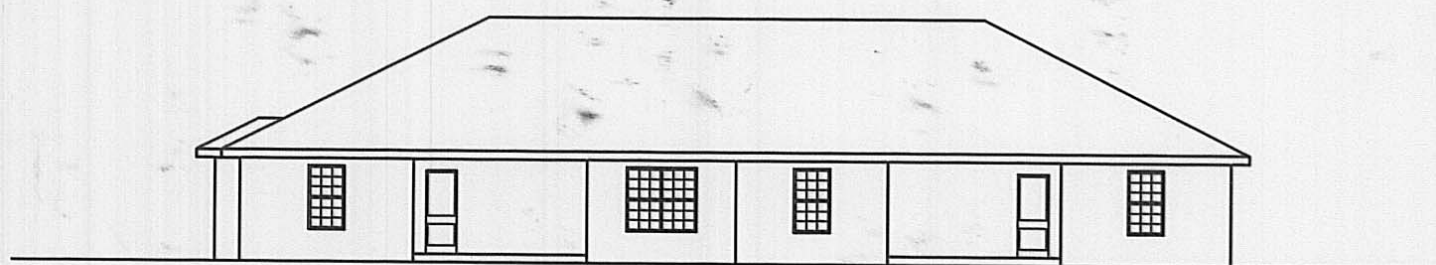
OPTIONAL BASEMENT PLAN FLOOR PLAN B



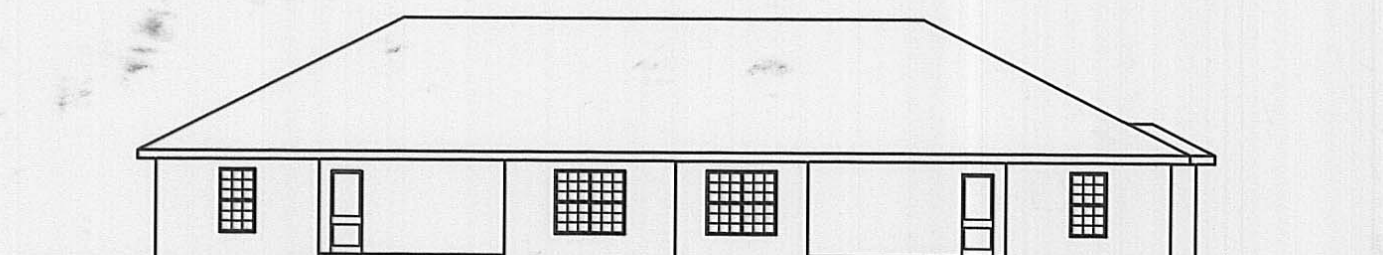
FRONT ELEVATION



FRONT ELEVATION



REAR ELEVATION

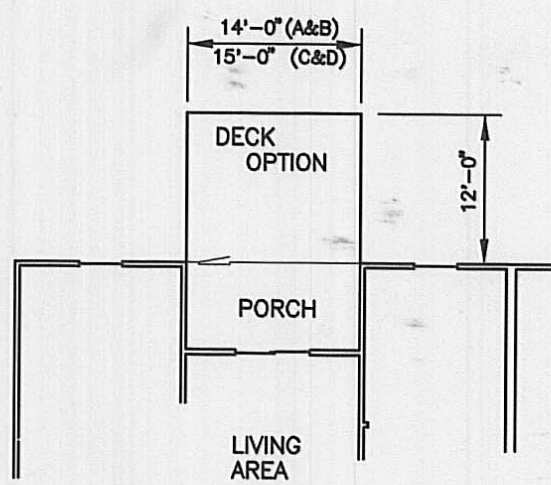


REAR ELEVATION

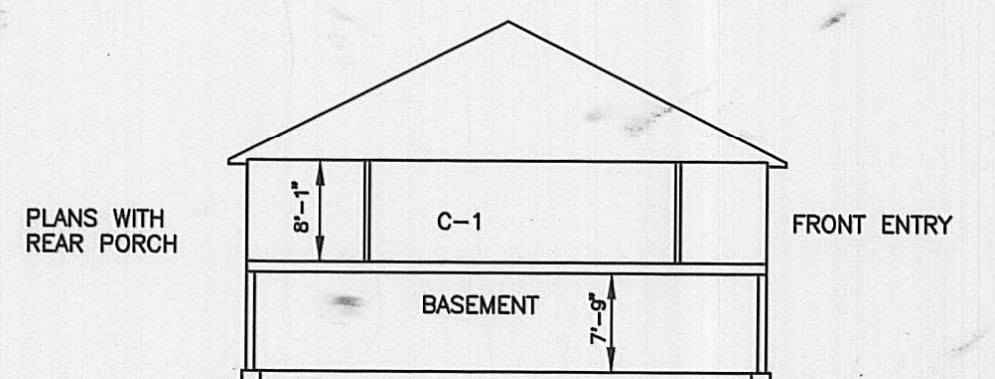
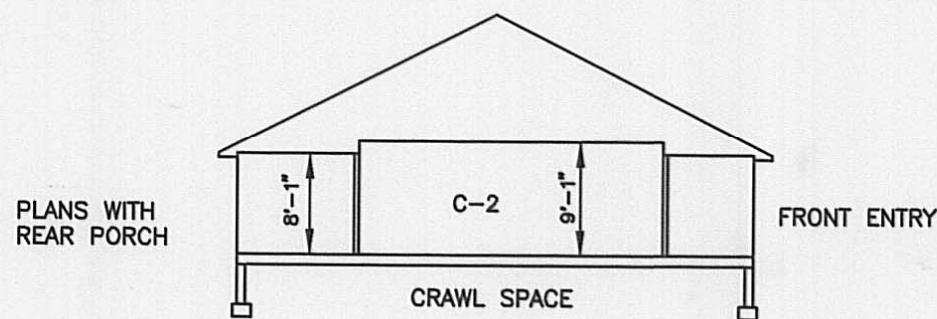
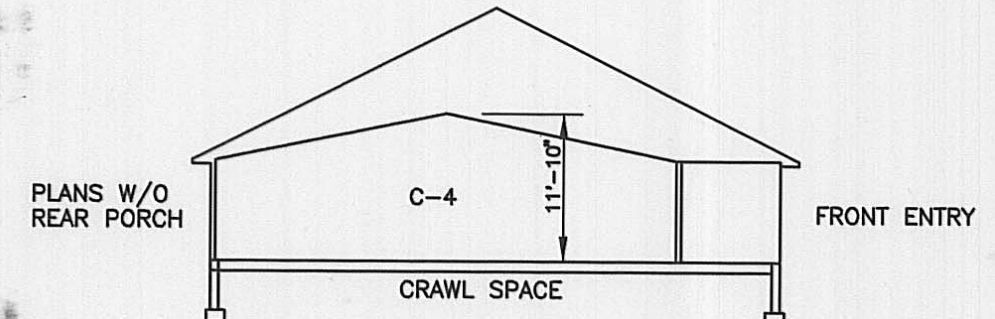
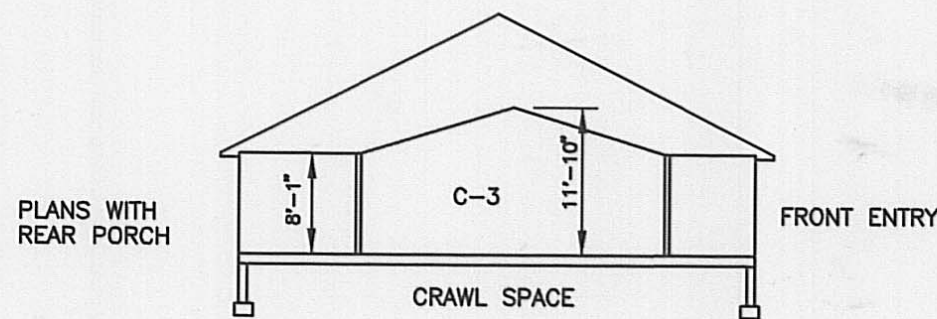
CONDOMINIUM PLAN "C" & "D"

CONDOMINIUM PLAN "A" & "B"

SCALE: $\frac{1}{16}'' = 1'-0''$



OPTIONAL DECK FOR ALL FLOOR PLANS



- FLOOR PLAN OPTION IDENTIFICATION CODE**
 EXAMPLE: PLAN NUMBER A, O, O, O, O, O, O
 A THRU D INDICATES BASIC FLOOR PLAN SELECTED
 O INDICATES NO OPTIONS SELECTED
 M INDICATES MIRROR IMAGE OF PLAN
 B INDICATES BASEMENT OPTION SELECTED
 K INDICATES KITCHEN OPTION SELECTED
 F INDICATES FIRE PLACE OPTION SELECTED
 C-1 INDICATES TYPE OF INTERIOR CEILING SELECTED
 D INDICATES DECK OPTION SELECTED

OPTIONAL INTERIOR CEILINGS