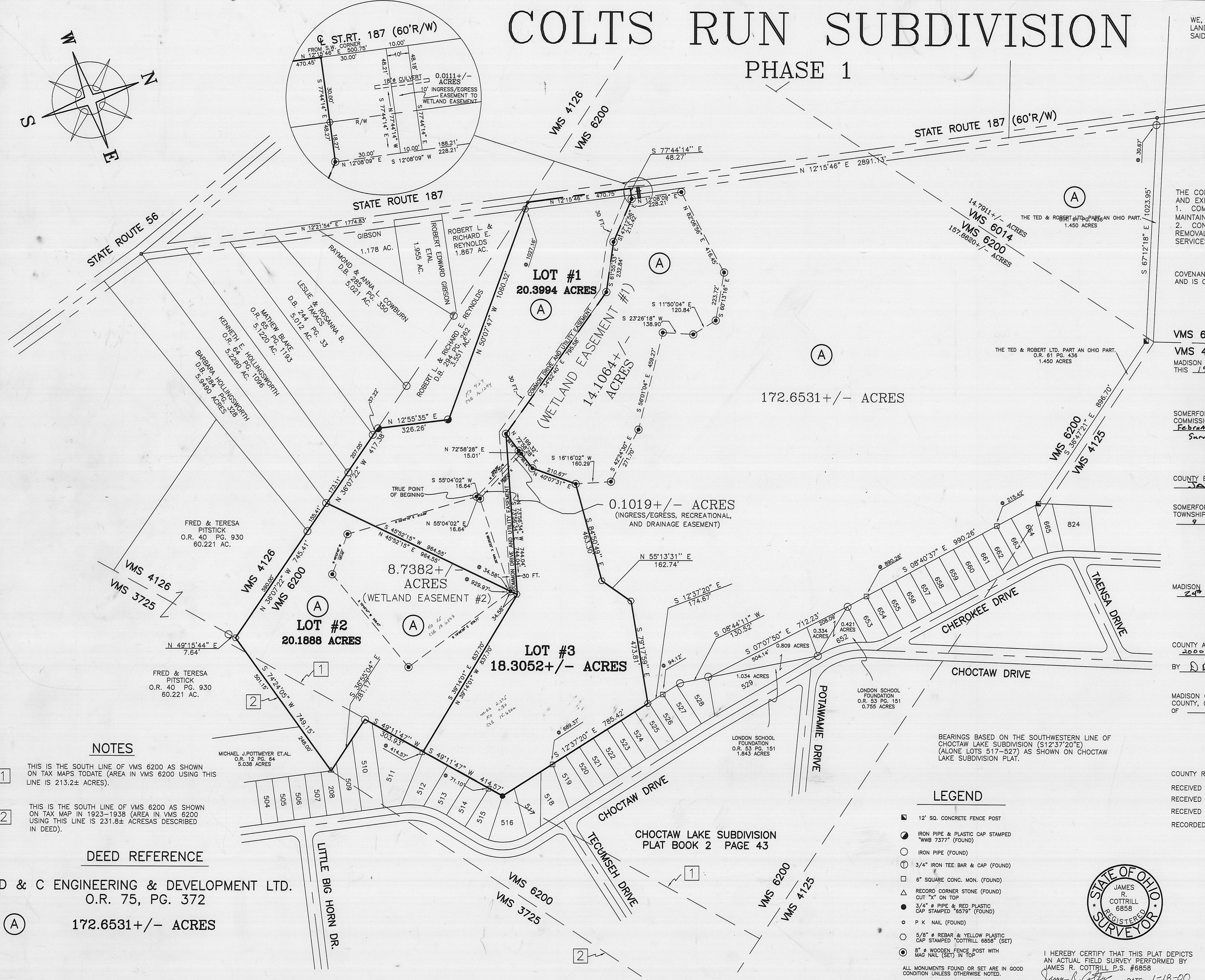
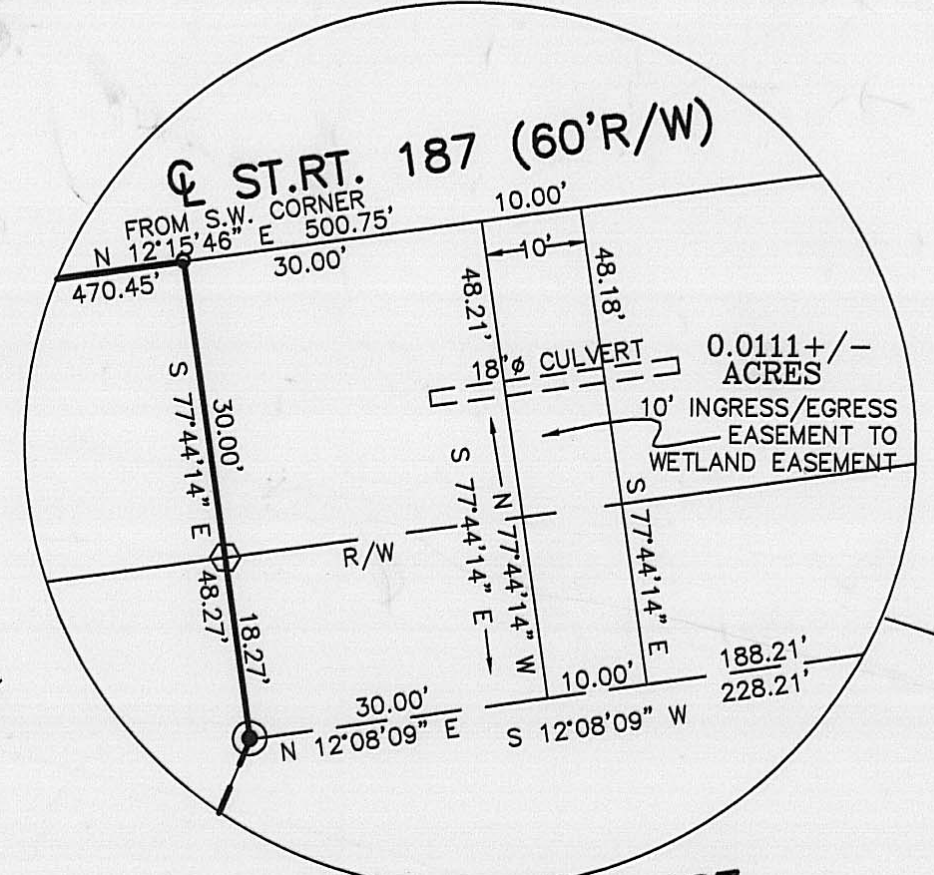
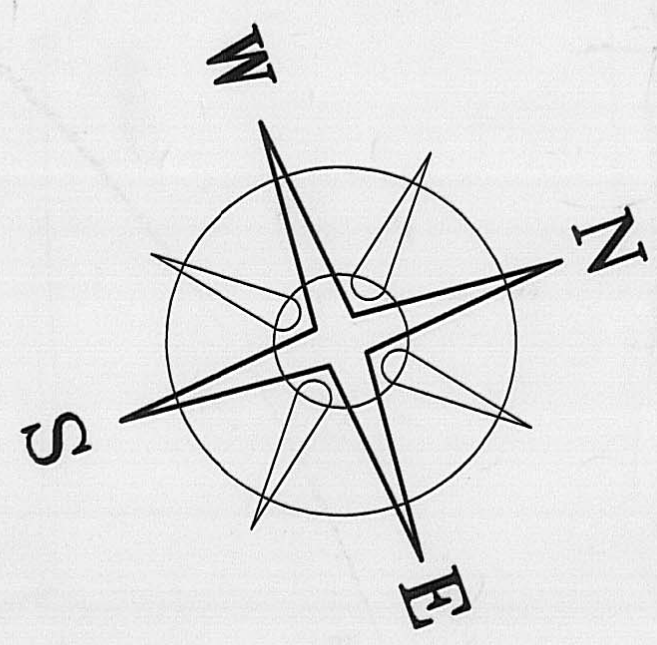


# COLTS RUN SUBDIVISION

## PHASE 1

WE, THE UNDERSIGNED, BEING THE OWNERS AND LIEN HOLDERS OF THE LANDS HEREIN PLATTED, DO HEREBY CONSENT TO THE EXECUTION OF THE SAID PLAT.



THE COMMON DRIVE AND UTILITY EASEMENT IS TAKEN FROM LOT #1 ONLY AND EXIST FOR THE FOLLOWING USES:  
 1. COMMON DRIVE TO BE USED FOR INGRESS AND EGRESS AND MAINTAINED BY THE OWNERS OF LOTS #1, 2, & 3 FOREVER.  
 2. CONSTRUCTION, OPERATION, MAINTENANCE, REPAIR, REPLACEMENT, OR REMOVAL OF GAS, ELECTRIC, TELEPHONE OR OTHER UTILITY LINES OR SERVICES.

COVENANTS AND RESTRICTIONS FOR THIS SUBDIVISION IS RECORDED SEPARATLY AND IS ON FILE IN THE MADISON COUNTY RECORDS OFFICE IN VOL. PG.

**VMS 6014**  
 MADISON COUNTY REGIONAL PLANNING COMMISSION: THIS PLAT WAS APPROVED ON THIS 19 DAY OF JANUARY, 2000.

SOMERFORD TOWNSHIP ZONING COMMISSION: WE, THE SOMERFORD TOWNSHIP ZONING COMMISSION, DO HEREBY APPROVE AND ACCEPT THIS PLAT ON THIS 9 DAY OF FEBRUARY, 2000.

COUNTY ENGINEER: I HEREBY APPROVE THIS PLAT ON THIS 24 DAY OF JAN, 2000. SURVEY APPROVAL ONLY.

SOMERFORD TOWNSHIP TRUSTEES: WE, THE BOARD OF TRUSTEES OF SOMERFORD TOWNSHIP, MADISON COUNTY, OHIO DO HEREBY APPROVE THIS PLAT ON THIS 9 DAY OF FEBRUARY, 2000.

MADISON COUNTY BOARD OF HEALTH: I HEREBY APPROVE THIS PLAT ON THIS 24 DAY OF JANUARY, 2000.

COUNTY AUDITOR: TRANSFERRED ON THIS 23 DAY OF FEBRUARY, 2000.

MADISON COUNTY COMMISSIONERS: WE, THE BOARD OF COMMISSIONERS OF MADISON COUNTY, OHIO DO HEREBY APPROVE THIS PLAT ON THIS 22 DAY OF FEB, 2000.

COUNTY RECORDER:  
 RECEIVED ON THIS 23 DAY OF FEB, 2000, AT 2:11 P.M.  
 RECEIVED ON THIS \_\_\_\_\_ DAY OF \_\_\_\_\_, \_\_\_\_\_, AT \_\_\_\_\_ M.  
 RECEIVED ON THIS \_\_\_\_\_ DAY OF \_\_\_\_\_, \_\_\_\_\_, AT \_\_\_\_\_ M.  
 RECORDED IN PLAT BOOK NO. SLIDE 154B, PAGE \_\_\_\_\_, FEE: \_\_\_\_\_  
*Andy Anderson, Deputy Recorder*

### NOTES

- THIS IS THE SOUTH LINE OF VMS 6200 AS SHOWN ON TAX MAPS TODAY (AREA IN VMS 6200 USING THIS LINE IS 213.2± ACRES).
- THIS IS THE SOUTH LINE OF VMS 6200 AS SHOWN ON TAX MAP IN 1923-1938 (AREA IN VMS 6200 USING THIS LINE IS 231.8± ACRES AS DESCRIBED IN DEED).

### DEED REFERENCE

D & C ENGINEERING & DEVELOPMENT LTD.  
 O.R. 75, PG. 372  
 172.6531+/- ACRES

### LEGEND

- 12" SQ. CONCRETE FENCE POST
- IRON PIPE & PLASTIC CAP STAMPED "WMB 7377" (FOUND)
- IRON PIPE (FOUND)
- ⊕ 3/4" IRON TEE BAR & CAP (FOUND)
- 6" SQUARE CONC. MON. (FOUND)
- △ RECORD CORNER STONE (FOUND)
- 3/4" PIPE & RED PLASTIC CAP STAMPED "6579" (FOUND)
- P K NAIL (FOUND)
- 5/8" REBAR & YELLOW PLASTIC CAP STAMPED "COTTRILL 8858" (SET)
- 8" WOODEN FENCE POST WITH MAG NAIL (SET) IN TOP

ALL MONUMENTS FOUND OR SET ARE IN GOOD CONDITION UNLESS OTHERWISE NOTED.

BEARINGS BASED ON THE SOUTHWESTERN LINE OF CHOCTAW LAKE SUBDIVISION (S12°37'20"E) (ALONE LOTS 517-527) AS SHOWN ON CHOCTAW LAKE SUBDIVISION PLAT.



I HEREBY CERTIFY THAT THIS PLAT DEPICTS AN ACTUAL FIELD SURVEY PERFORMED BY JAMES R. COTTRILL P.S. #6858  
*James R. Cottrill* DATE: 1-18-00

### JAMES R. COTTRILL P.S.

8256 S.R. 207 NE MT. STERLING, OHIO 43143 PH. (614) 869-3811

PLAT OF  
**COLTS RUN SUBDIVISION, PHASE 1**  
 V.M.S. 6200, SOMERFORD  
 TOWNSHIP, MADISON COUNTY, OHIO.  
 SURVEYED FOR DC ENGINEERING AND  
 DEVELOPMENT, LTD.

PTS.S990912  
 DATE: 9-26-99  
 JOB#S991210  
 F.B.#FILE  
 SCALE: 1" = 200'  
 200' 100' 0' 200'  
 CREW: MW, JB  
 DWN. BY: RC  
 CK. BY: