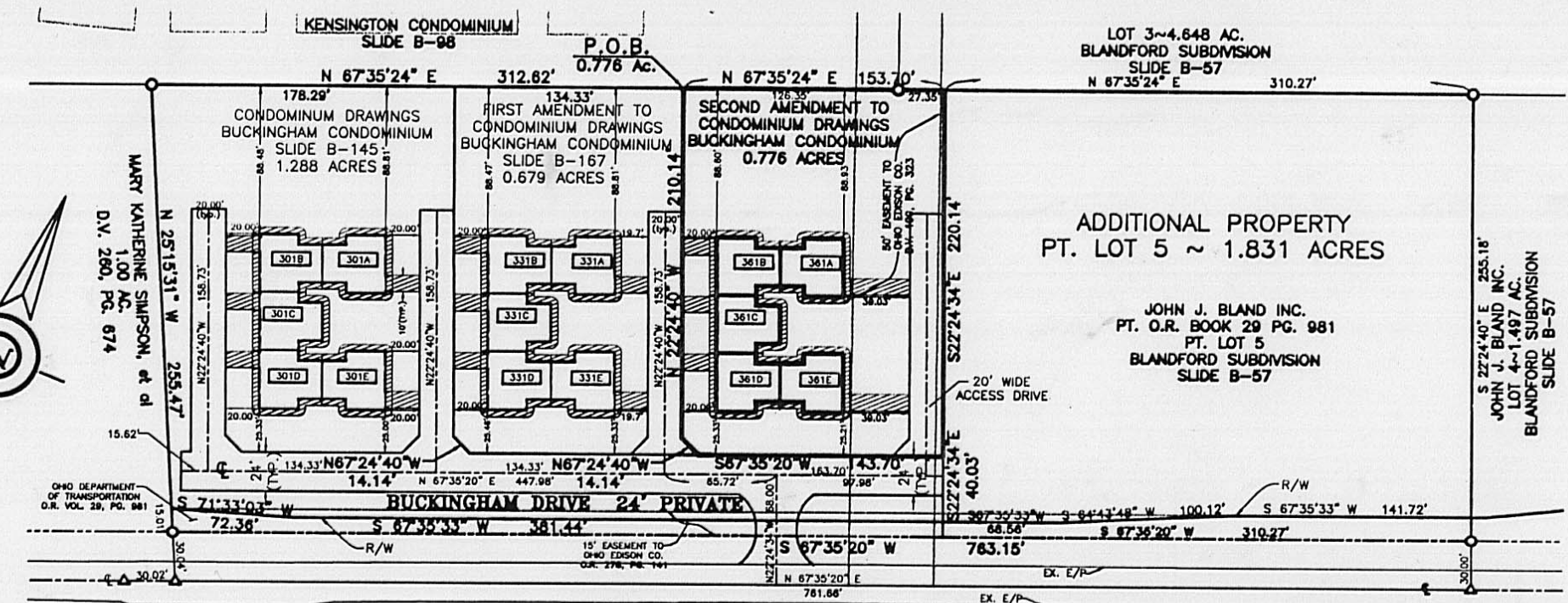


OWNER/DEVELOPER  
 JOHN J. BLAND INC.  
 314 BISHOP DRIVE  
 LONDON, OHIO 43140

SECOND AMENDMENT TO  
 CONDOMINIUM DRAWINGS  
**BUCKINGHAM CONDOMINIUM**  
 (UNITS 361A-361E)

ENGINEER/SURVEYOR  
 HOPPE ENGINEERING &  
 SURVEYING COMPANY  
 1533 MOOREFIELD ROAD  
 SPRINGFIELD, OHIO 45503

PT. LOT 5 ~ BLANDFORD SUBDIVISION  
 CITY OF LONDON, MADISON COUNTY, OHIO  
 APRIL 6, 2001



**GENERAL NOTES:**

1. BASIS OF BEARINGS IS NORTH 25°12'13" EAST ON THE EAST LINE OF LONDON VILLAGE CONDOMINIUM. RECORDED SLIDE 624 OF THE MADISON COUNTY PLAT RECORDS.
2. UNITS ARE NUMBERED 361A, 361B, 361C, 361D & 361E.
3. BRACKETS "[ ]" INDICATE DEED OR PLAT CALLS.
4. INDIVIDUAL UNIT DRIVEWAYS AND AREAS WITHIN 4 FEET OF THE CONSTRUCTED UNITS SHALL BE KNOWN AS LIMITED COMMON AREAS APPURTENANT TO THE UNIT. ALL OTHER AREAS SHALL BE CONSIDERED COMMON AREAS.
5. ALL AREAS AND IMPROVEMENTS NOT DESIGNATED BY UNIT DESIGNATION OR AS LIMITED COMMON AREAS ARE COMMON AREAS.
6. UNIT DIMENSIONS SHOWN FOR UNIT 361E ARE TYPICAL UNIT DIMENSIONS FOR ALL UNITS.

**COVENANTS, AGREEMENTS, AND RESTRICTIONS**

THE UNITS AND LANDS SHOWN HEREON ARE SUBJECT TO THE DECLARATION OF CONDOMINIUM OF BUCKINGHAM CONDOMINIUM AND BY-LAWS OF THE BUCKINGHAM CONDOMINIUM ASSOCIATION, WHICH ARE RECORDED IN BOOK 105, PAGES 1103-1140, et seq. OF THE OFFICIAL RECORDS OF MADISON COUNTY, OHIO AND ALL AMENDMENTS THERETO.

**COUNTY RECORDER**

I HEREBY CERTIFY THAT THESE CONDOMINIUM DRAWINGS WERE FILED FOR RECORDING ON \_\_\_\_\_ AND THAT THEY WERE RECORDED ON \_\_\_\_\_ IN SLIDE \_\_\_\_\_, PLAT RECORDS OF MADISON COUNTY, OHIO

MADISON COUNTY RECORDER

**COUNTY AUDITOR**

I HEREBY CERTIFY THAT A COPY OF THESE CONDOMINIUM DRAWINGS WAS FILED ON \_\_\_\_\_

MADISON COUNTY AUDITOR

**ENGINEER**

I HEREBY CERTIFY THAT THESE DRAWINGS ACCURATELY SHOW ALL BUILDINGS OF BUCKINGHAM CONDOMINIUM, AS ADDED BY THE SECOND AMENDMENT, AS CONSTRUCTED.

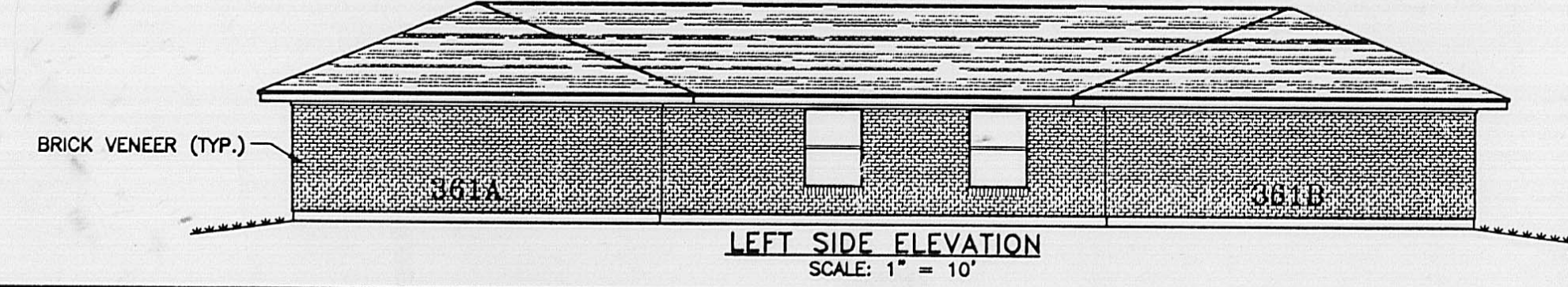
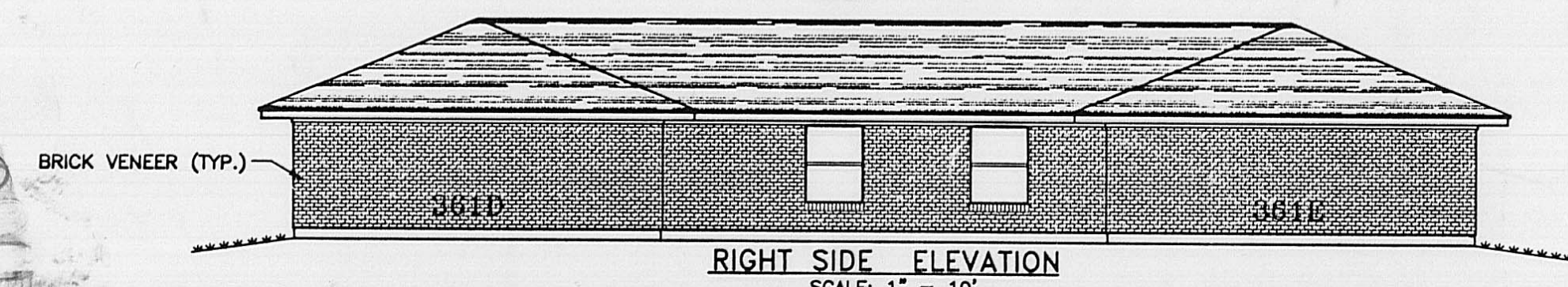
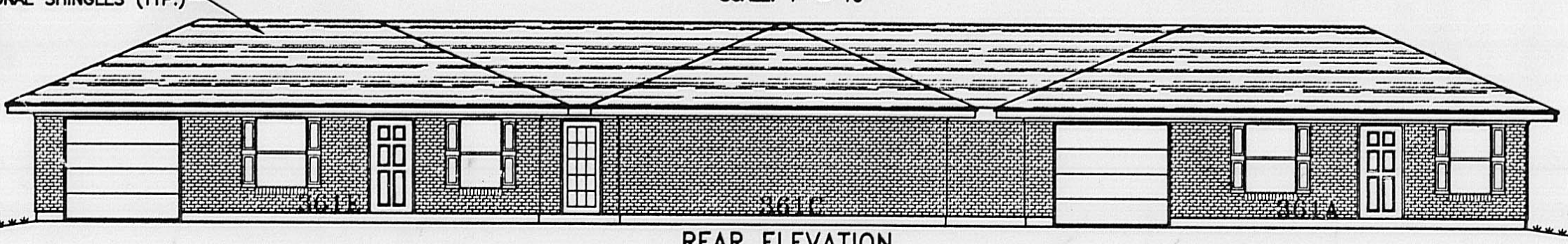
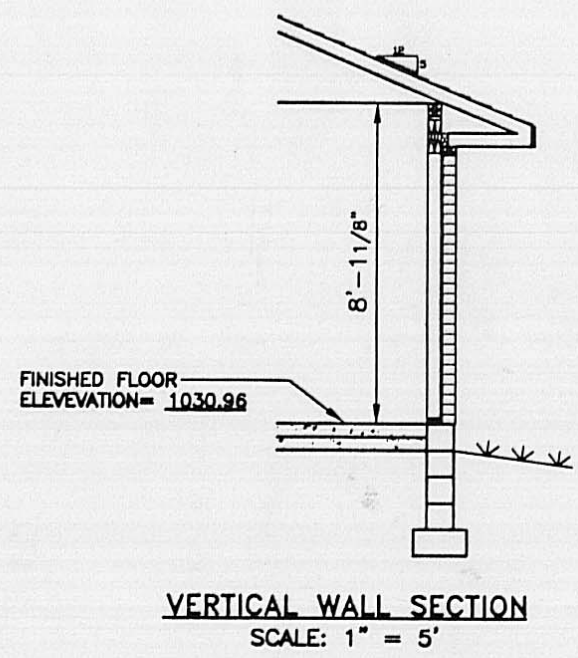
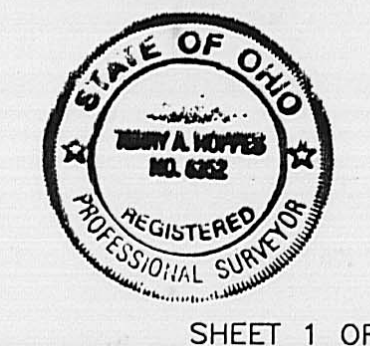
*T.A.H.*  
 TERRY A. HOPPE  
 PROFESSIONAL ENGINEER NO. 40640



**SURVEYOR**

I HEREBY CERTIFY THAT THESE DRAWINGS ACCURATELY SHOW ALL BUILDINGS OF BUCKINGHAM CONDOMINIUM, AS ADDED BY THE SECOND AMENDMENT, AS CONSTRUCTED.

*T.A.H.*  
 TERRY A. HOPPE  
 PROFESSIONAL SURVEYOR NO. 6352



51-01