

BEARINGS BASED ON THE NORTH LINE OF I 71
(N 89°30'39"W) AS DESCRIBED IN VOL. 291, PG. 147.

DEED REFERENCE

MARJORIE E. NETZLEY
ET.AL.

VOL. 40, PG. 184
93.703 ACRES (332)

VOL. 291, PG. 147
57.63 ACRES (190)

(C) 13.3527 ACRES (170)

THE BOARD OF
COMMISSIONERS OF MADISON COUNTY
OR 126, P. 117
8.8604 ACRES

LEGEND

- IRON PIPE (FOUND)
- ⊕ 3/4" IRON TEE BAR & CAP (FOUND)
- 1/2" DIA. SOLID IRON PIN (FOUND)
- △ RECORD CORNER STONE (FOUND)
- RAIL ROAD SPIKE
- MAG NAIL (SET)
- ⊕ 5/8" ⌀ REBAR & YELLOW PLASTIC CAP STAMPED "COTTRILL 6858" (SET)
- ALL MONUMENTS FOUND OR SET ARE IN GOOD CONDITION UNLESS OTHERWISE NOTED.
- TAX MAP PARCEL NUMBER

ELEVATION FROM PK NAIL IN C. OF OLD COLUMBUS ROAD
PROVIDED BY MADISON COUNTY ENGINEERS OFFICE

REVISED SEE S000205



JAMES R. COTTRILL P.S.
8256 S.R. 207 N.E. MT. STERLING, OHIO 43143 PH. (740) 869-3811

**8.8796± ACRES, VMS 8352,
& 3725, SOMERFORD TWP.
MADISON COUNTY, OHIO.
SURVEYED FOR MADISON CO. ENG.**

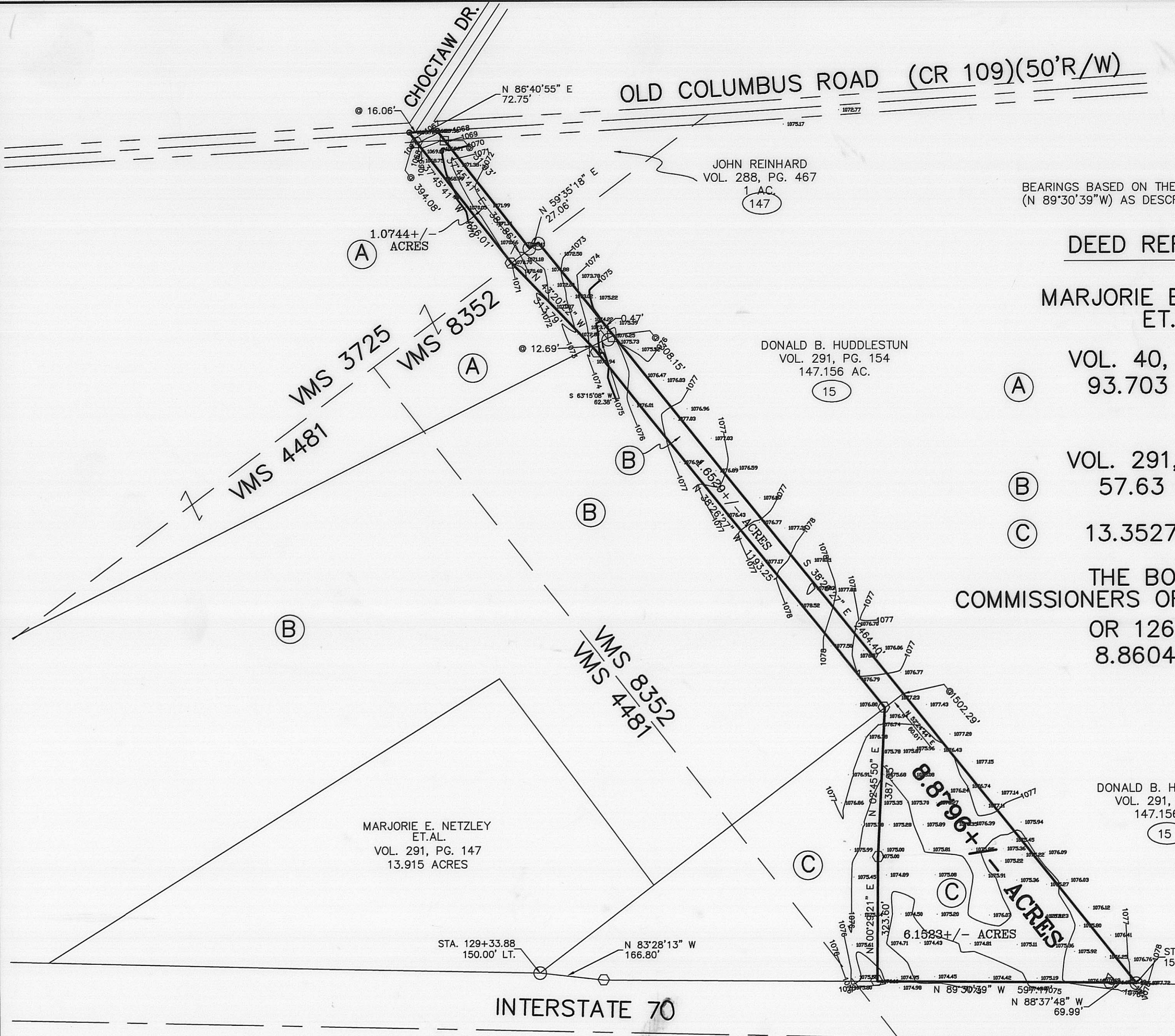
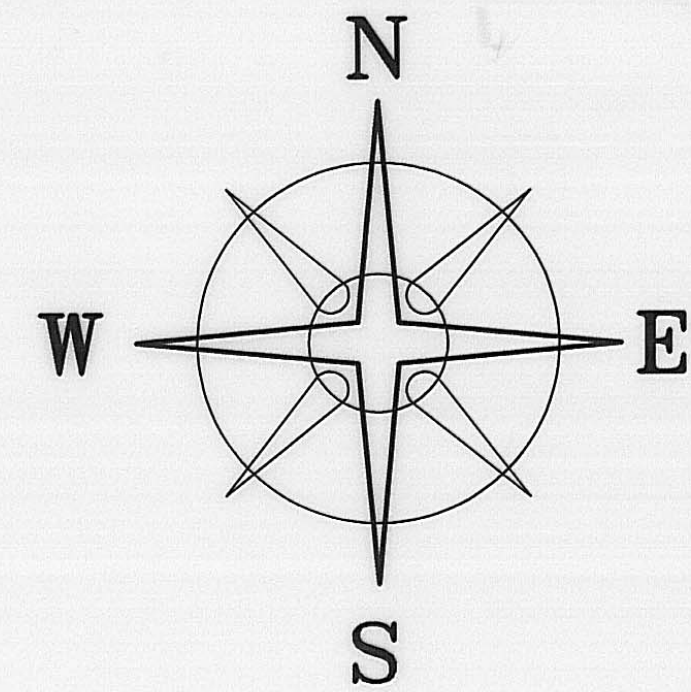
DATE DRAWN: 7-6-01	SCALE : 1" = 200' 200' 100' 0 200'	CREW: MW, EM
JOB #S010516		DWN. BY: RC
F. B. # 24		CK. BY:

NOTE

ACERAGE OF 8.8604 ACRE AS IN O.R. 126, P. 117 IS IN ERROR
8.8796± ACRES IS CORRECT AS SHOWN ON THIS PLAT.

I HEREBY CERTIFY THAT THIS PLAT DEPICTS
AN ACTUAL FIELD SURVEY PERFORMED BY
JAMES R. COTTRILL P.S. #6858
James R. Cottrill DATE: 7-24-01

72-01



BEARINGS BASED ON THE NORTH LINE OF I 71
(N 89°30'39"W) AS DESCRIBED IN VOL. 291, PG. 147.

DEED REFERENCE

MARJORIE E. NETZLEY
ET.AL.

VOL. 40, PG. 184
93.703 ACRES (332)

VOL. 291, PG. 147
57.63 ACRES (190)

(A) (B) (C)
13.3527 ACRES (170)

THE BOARD OF
COMMISSIONERS OF MADISON COUNTY
OR 126, P. 117
8.8604 ACRES

LEGEND

- IRON PIPE (FOUND)
- ⊕ 3/4" IRON TEE BAR & CAP (FOUND)
- 1/2" DIA. SOLID IRON PIN (FOUND)
- △ RECORD CORNER STONE (FOUND)
- RAIL ROAD SPIKE
- MAG NAIL (SET)
- ⊕ 5/8" ⌀ REBAR & YELLOW PLASTIC CAP STAMPED "COTTRILL 6858" (SET)
- TAX MAP PARCEL NUMBER

ELEVATION FROM PK NAIL IN Ⓞ OF OLD COLUMBUS ROAD
PROVIDED BY MADISON COUNTY ENGINEERS OFFICE

REVISED SEE S000205

JAMES R. COTTRILL P.S.
8256 S.R. 207 N.E. MT. STERLING, OHIO 43143 PH. (740) 869-3811

**8.8796± ACRES, VMS 8352,
& 3725, SOMERFORD TWP.
MADISON COUNTY, OHIO.
SURVEYED FOR MADISON CO. ENG.**

DATE DRAWN: 7-6-01	SCALE : 1" = 200' 200' 100' 0 200'	CREW: MW, EM
JOB #S010516		DWN. BY: RC
F. B. # 24		CK. BY:



I HEREBY CERTIFY THAT THIS PLAT DEPICTS
AN ACTUAL FIELD SURVEY PERFORMED BY
JAMES R. COTTRILL P.S. #6858
James R. Cottrill DATE: 7-24-01

NOTE

ACERAGE OF 8.8604 ACRE AS IN O.R. 126, P. 117 IS IN ERROR
8.8796± ACRES IS CORRECT AS SHOWN ON THIS PLAT.

72-01
A