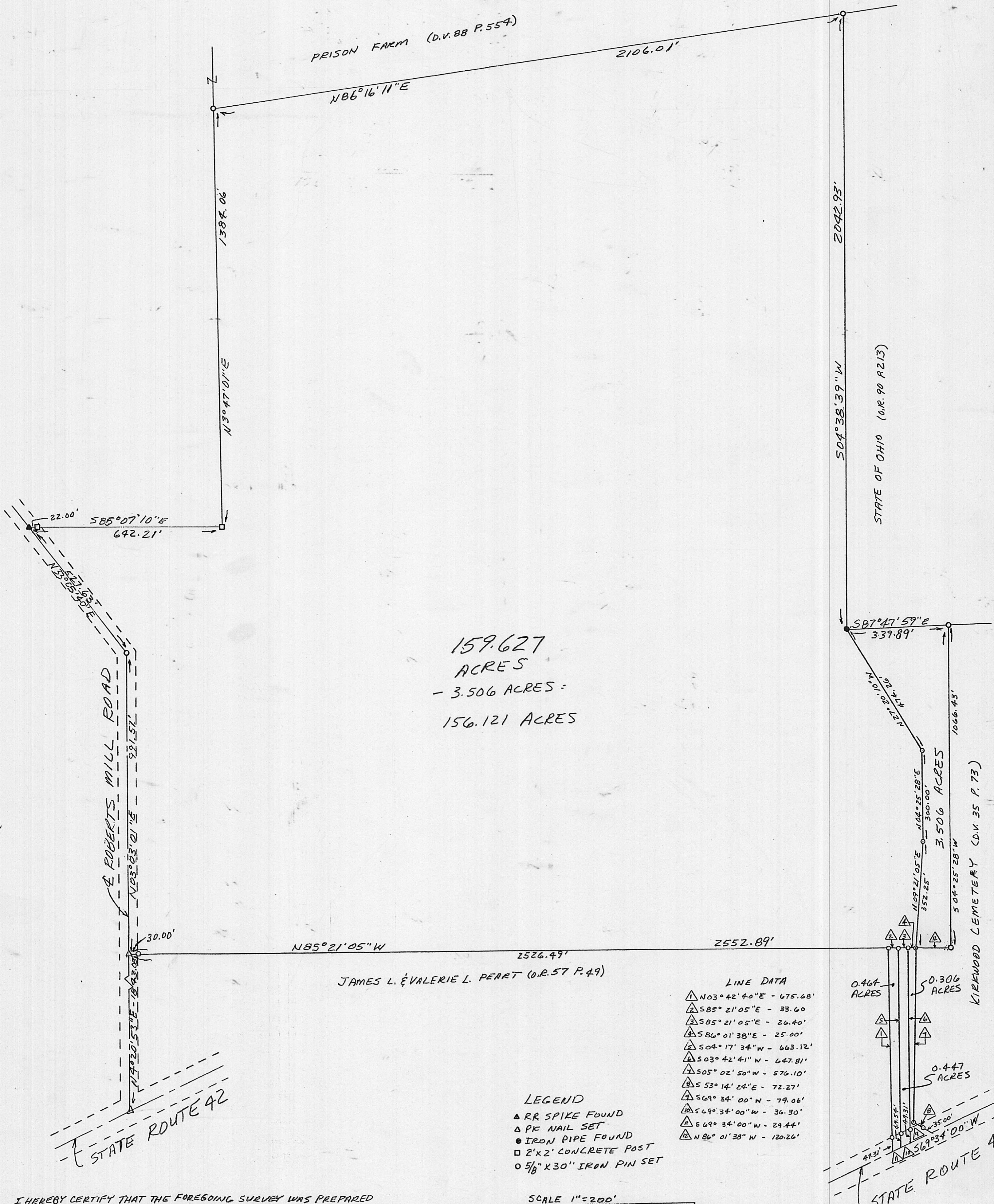


SURVEY FOR
STATE OF OHIO
 PART OF VMS 4513
 UNION TOWNSHIP, MADISON COUNTY, OHIO

PRISON FARM (D.V. 88 P. 554)

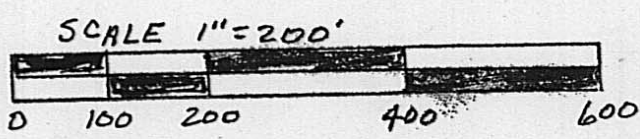


159.627
 ACRES
 - 3.506 ACRES =
 156.121 ACRES

LINE DATA

①	N03°42'40"E	- 675.68'
②	S85°21'05"E	- 33.60'
③	S85°21'05"E	- 26.40'
④	S86°01'38"E	- 25.00'
⑤	S04°17'34"W	- 663.12'
⑥	S03°42'41"W	- 647.81'
⑦	S05°02'50"W	- 576.10'
⑧	S53°14'24"E	- 72.27'
⑨	S69°34'00"W	- 79.06'
⑩	S69°34'00"W	- 36.30'
⑪	S69°34'00"W	- 29.44'
⑫	N86°01'38"W	- 120.26'

LEGEND
 ▲ RR SPIKE FOUND
 △ PK NAIL SET
 ● IRON PIPE FOUND
 □ 2'X2' CONCRETE POST
 ○ 5/8" X 30" IRON PIN SET



I HEREBY CERTIFY THAT THE FOREGOING SURVEY WAS PREPARED FROM ACTUAL FIELD MEASUREMENTS IN ACCORDANCE WITH CHAPTER 4733-37 OF OHIO ADMINISTRATION CODE.

Samuel W. Vance
 SAMUEL W. VANCE
 REGISTERED SURVEYOR No. 6553

106-02

DATE: JULY 8, 2002
 OCT. 29, 2002

PREPARED BY
 VANCE SURVEYING
 28 CLINTON ROAD
 MT. VERNON, OH. 43050

VS

VANCE SURVEYING

28 CLINTON ROAD
MOUNT VERNON, OHIO 43050
740-397-6296

SAMUEL R. VANCE, PS

DESCRIPTION 0.306 ACRE TRACT

Being situated in Virginia Military Survey No. 4513, Union Township, Madison County, State of Ohio and being part of that land of record in Official Records Volume 57 Page 49 in the Madison County Recorder's Office and being more particularly described as follows;

Beginning for reference at a pk nail set in the centerline intersection of State Route 42 and Roberts Mill Road; Thence North 04 degrees 20 minutes 53 seconds East along the centerline of Roberts Mill Road a distance of 1843.08 feet to a pk nail set; thence South 85 degrees 21 minutes 05 seconds East a distance of 2552.87 feet to a 5/8 inch iron pin set and being the true place of beginning;

thence from the true place of beginning South 86 degrees 01 minutes 38 seconds East a distance of 25.00 feet to a 5/8 inch iron pin set;

thence South 05 degrees 02 minutes 50 seconds West a distance of 576.10 feet to a 5/8 inch iron pin set;

thence South 53 degrees 14 minutes 24 seconds East a distance of 72.27 feet (passing over a 5/8 inch iron pin set at 37.27 feet) to a point in the centerline of State Route 42;

thence South 69 degrees 34 minutes 00 seconds West along the centerline of State Route 42 a distance of 79.06 feet to a point;

thence North 03 degrees 42 minutes 41 seconds East a distance of 647.81 feet (passing over a 5/8 inch iron pin set at 49.31 feet) to the place of beginning - containing 0.306 acres, more or less.

Subject to all legal right-of-way of previous record.

The above described parcel was prepared by me, Samuel W. Vance, from a survey made by me in July, 2002. Bearing Basis assumed. All pins set are 5/8 inch by 30 inch iron pins with plastic caps stamped "Vance 6553".



VS

VANCE SURVEYING

28 CLINTON ROAD
MOUNT VERNON, OHIO 43050
740-397-6296

SAMUEL R. VANCE, PS

DESCRIPTION 0.447 ACRE TRACT

Being situated in Virginia Military Survey No. 4513, Union Township, Madison County, State of Ohio and being part of that land of record in Deed Volume 265 Page 215 in the Madison County Recorder's Office and being more particularly described as follows;

Beginning for reference at a pk nail set in the centerline intersection of State Route 42 and Roberts Mill Road; Thence North 04 degrees 20 minutes 53 seconds East along the centerline of Roberts Mill Road a distance of 1843.08 feet to a pk nail set; thence South 85 degrees 21 minutes 05 seconds East a distance of 2526.49 feet to a 5/8 inch iron pin set and being the true place of beginning;

thence from the true place of beginning South 85 degrees 21 minutes 05 seconds East a distance of 26.40 feet to a 5/8 inch iron pin set;

thence South 03 degrees 42 minutes 41 seconds West along the westerly boundary of Kirkwood Cemetery a distance of 647.81 feet (passing over a 5/8 inch iron pin set at 598.50 feet) to a point in the centerline of State Route 42;

thence South 69 degrees 34 minutes 00 seconds West along the centerline of State Route 42 a distance of 36.30 feet to a point;

thence North 04 degrees 17 minutes 34 seconds East along an easterly boundary of James L. and Valerie L. Peart (O.R. 57 P. 49) a distance of 663.12 feet (passing over a 5/8 inch iron pin set at 49.54 feet) to the place of beginning - containing 0.447 acres, more or less.

Subject to all legal right-of-way of previous record.

The above described parcel was prepared by me, Samuel R. Vance, from a survey made by me in July, 2002. Bearing Basis assumed. All pins set are 5/8 inch by 30 inch iron pins with plastic caps stamped "Vance 6553".



VS

VANCE SURVEYING

28 CLINTON ROAD
MOUNT VERNON, OHIO 43050
740-397-6296

SAMUEL R. VANCE, PS

DESCRIPTION 0.464 ACRE TRACT

Being situated in Virginia Military Survey No. 4513, Union Township, Madison County, State of Ohio and being part of that land of record in Deed Volume 265 Page 215 in the Madison County Recorder's Office and being more particularly described as follows;

Beginning for reference at a pk nail set in the centerline intersection of State Route 42 and Roberts Mill Road; Thence North 04 degrees 20 minutes 53 seconds East along the centerline of Roberts Mill Road a distance of 1843.08 feet to a pk nail set; thence South 85 degrees 21 minutes 05 seconds East a distance of 2492.89 feet to a 5/8 inch iron pin set and being the true place of beginning;

thence from the true place of beginning South 85 degrees 21 minutes 05 seconds East a distance of 33.60 feet to a 5/8 inch iron pin set;

thence South 04 degrees 17 minutes 34 seconds West a distance of 663.12 feet (passing over a 5/8 inch iron pin set at 613.61 feet) to a point in the centerline of State Route 42;

thence South 69 degrees 34 minutes 00 seconds West along the centerline of State Route 42 a distance of 29.44 feet to a point;

thence North 03 degrees 42 minutes 40 seconds East a distance of 675.68 feet (passing over a 5/8 inch iron pin set at 49.31 feet) to the place of beginning - containing 0.464 acres, more or less.

Subject to all legal right-of-way of previous record.

The above described parcel was prepared by me, Samuel R. Vance, from a survey made by me in July, 2002. Bearing Basis assumed. All pins set are 5/8 inch by 30 inch iron pins with plastic caps stamped "Vance 6553".



VS

VANCE SURVEYING

28 CLINTON ROAD
MOUNT VERNON, OHIO 43050
740-397-6296

SAMUEL R. VANCE, PS

DESCRIPTION 3.506 ACRE TRACT

Being situated in Virginia Military Survey No. 4513, Union Township, Madison County, State of Ohio and being part of that land of record in Deed Volume 265 Page 215 in the Madison County Recorder's Office and being more particularly described as follows;

Beginning for reference at a pk nail set in the centerline intersection of State Route 42 and Roberts Mill Road; Thence North 04 degrees 20 minutes 53 seconds East along the centerline of Roberts Mill Road a distance of 1843.08 feet to a pk nail set; thence South 85 degrees 21 minutes 05 seconds East a distance of 2577.87 feet to a 5/8 inch iron pin set and being the true place of beginning;

thence from the true place of beginning North 09 degrees 21 minutes 05 seconds East a distance of 352.25 feet to a 5/8 inch iron pin set;

thence North 04 degrees 25 minutes 28 seconds East a distance of 300.00 feet to a 5/8 inch iron pin set;

thence North 27 degrees 20 minutes 10 seconds West a distance of 474.26 feet to an iron pipe found;

thence South 87 degrees 47 minutes 59 seconds East along the southerly boundary of John R. Dunke (D.V. 294 P. 643) a distance of 339.90 feet to a 5/8 inch iron pin set;

thence South 04 degrees 25 minutes 28 seconds West along the westerly boundary of the Kirkwood Cemetery a distance of 1066.43 feet to a 5/8 inch iron pin set;

thence North 86 degrees 01 minutes 38 seconds West along a boundary of the Kirkwood Cemetery a distance of 120.26 feet to the place of beginning - containing 3.506 acres, more or less.

Subject to all legal right-of-way of previous record.

The above described parcel was prepared by me, Samuel R. Vance, from a survey made by me in August, 2002. Bearing Basis assumed. All pins set are 5/8 inch by 30 inch iron pins with plastic caps stamped "Vance 6553".

