

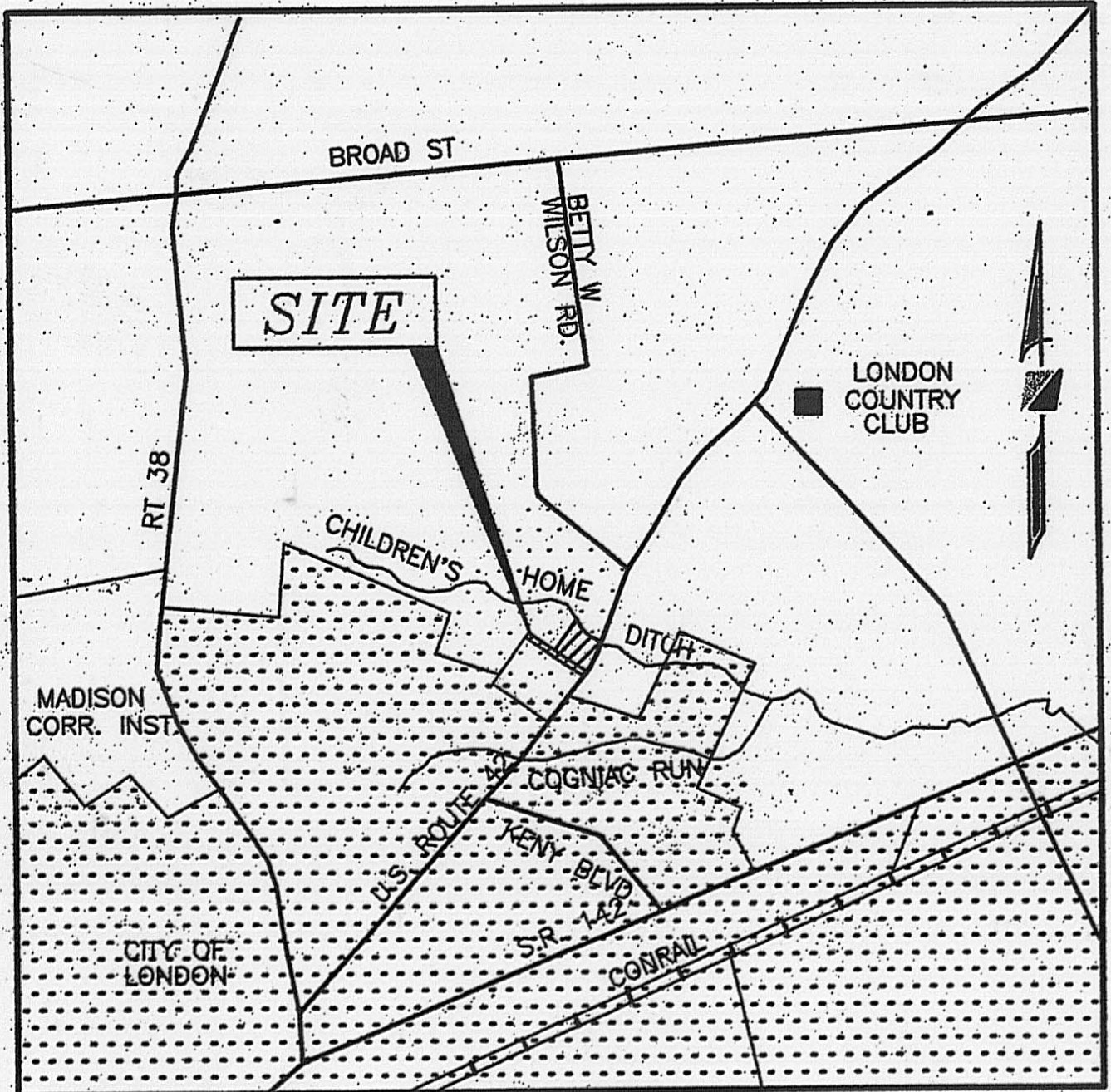
# EAGLETON CENTER

IN WITNESS WHEREOF MACY T. BLOCK, THE PRESIDENT OF MTB CORP., AN OHIO CORPORATION, HAS CAUSED THIS PLAT TO BE EXECUTED THIS 10<sup>th</sup> DAY OF September 2002.

SIGNED & ACKNOWLEDGED  
IN THE PRESENCE OF:

Julie McCannille  
PRINTED: Julie McCannille  
Jane J. Schmidt  
PRINTED: Jane J. Schmidt

MTB CORP.  
AN OHIO CORPORATION  
BY: Macy T. Block  
MACY T. BLOCK, PRESIDENT



VICINITY MAP  
(NOT TO SCALE)

SITUATED IN THE STATE OF OHIO, COUNTY OF MADISON, CITY OF LONDON, LYING VIRGINIA MILITARY SURVEY NUMBER 5802, CONTAINING 13.001 ACRES OUT OF THE 194.677 ACRE TRACT CONVEYED TO MTB CORP., AN OHIO CORPORATION, BY DEED OF RECORD IN DEED BOOK 298, PAGE 400, RECORDS OF THE RECORDER'S OFFICE, MADISON COUNTY, OHIO, OF WHICH 2.200 ACRES LIES WITHIN THE RIGHT-OF-WAY OF EAGLETON BOULEVARD AND U.S. ROUTE 42.

THE UNDERSIGNED, BY MACY T. BLOCK, THE PRESIDENT OF MTB CORP., AN OHIO CORPORATION, BY ROBERT A. MEYER, JR., SENIOR VICE-PRESIDENT OF DOMINION HOMES, INC., AN OHIO CORPORATION, AND BY Robert J. Verheulen, THE V.P. OF MEIJER GROUP, INC. THE GENERAL PARTNER OF MEIJER STORES LIMITED PARTNERSHIP, A MICHIGAN LIMITED PARTNERSHIP, BEING THE OWNERS OF THE LAND PLATTED HEREIN, DOES HEREBY CERTIFY THAT THIS PLAT CORRECTLY REPRESENTS ITS DEDICATION OF EAGLETON CENTER A SUBDIVISION OF LOT 1 AND DOES HEREBY ACCEPT THIS PLAT OF SAME AND DEDICATE TO PUBLIC USE, AS SUCH, ALL OF THE BOULEVARD, ROAD AND EASEMENTS SHOWN HEREON AND NOT HERETOFORE DEDICATED.

EASEMENTS ARE DEDICATED WHERE INDICATED ON THE PLAT FOR THE CONSTRUCTION, OPERATION, AND MAINTENANCE OF ALL PUBLIC AND PRIVATE UTILITIES, ABOVE AND BENEATH THE SURFACE OF THE GROUND, AND WHERE NECESSARY FOR THE CONSTRUCTION, OPERATION, AND MAINTENANCE OF SERVICE CONNECTIONS TO ALL ADJACENT LOTS AND LANDS, AND FOR STORM WATER DRAINAGE.

THE EASEMENTS SHOWN HEREON OUTSIDE THE PLATTED AREA ARE WITHIN THOSE TRACTS OF LAND OWNED BY SAID MTB CORP. AND MEIJER STORES LIMITED PARTNERSHIP, AND ARE DEDICATED FOR THE USES AND PURPOSES STATED IN THE PRECEDING EASEMENTS PARAGRAPH.

GRANTOR, BEING THE DULY AUTHORIZED REPRESENTATIVE OF THE DEVELOPER DEDICATING THE PROPERTY DESCRIBED IN THIS PLAT, HEREBY AGREES THAT GRANTOR WILL INDEMNIFY THE CITY OF LONDON FOR AND HOLD IT HARMLESS FROM ANY AGRICULTURAL RECOUPMENTS ASSESSED OR LEVIED IN THE FUTURE AGAINST THE PROPERTY DEDICATED HEREIN WHICH RESULT FROM GRANTORS CONVERSION OF THE PROPERTY FROM AGRICULTURAL USE.

STATE OF OHIO SS

THE FOREGOING PLAT WAS ACKNOWLEDGED BEFORE ME THIS 10<sup>th</sup> DAY OF September, 2002 BY MACY T. BLOCK, THE PRESIDENT OF MTB CORP., AN OHIO CORPORATION. FOR AND ON BEHALF OF THE CORPORATION.

MY COMMISSION EXPIRES June 30, 2004  
Julie Ann McCannille  
NOTARY PUBLIC, STATE OF OHIO

IN WITNESS WHEREOF DOMINION HOMES, INC., AN OHIO CORPORATION, HAS CAUSED THIS PLAT TO BE EXECUTED BY ITS DULY AUTHORIZED OFFICER THIS 6<sup>th</sup> DAY OF September 2002.

SIGNED & ACKNOWLEDGED  
IN THE PRESENCE OF:

Debbie Sekerak  
PRINTED: Debbie Sekerak  
Susan McElhines  
PRINTED: Susan McElhines

DOMINION HOMES, INC.  
AN OHIO CORPORATION  
BY: Robert A. Meyer, Jr.  
SENIOR VICE-PRESIDENT

STATE OF OHIO SS

THE FOREGOING PLAT WAS ACKNOWLEDGED BEFORE ME THIS 6<sup>th</sup> DAY OF September, 2002 BY MACY T. BLOCK, THE PRESIDENT OF MTB CORP., AN OHIO CORPORATION. FOR AND ON BEHALF OF THE CORPORATION.

MY COMMISSION EXPIRES June 30, 2004  
Robert J. Verheulen  
NOTARY PUBLIC, STATE OF OHIO

IN WITNESS WHEREOF Robert J. Verheulen, THE VICE PRESIDENT OF MEIJER GROUP, INC. THE GENERAL PARTNER OF MEIJER STORES LIMITED PARTNERSHIP, A MICHIGAN LIMITED PARTNERSHIP, HAS CAUSED THIS PLAT TO BE EXECUTED THIS 25<sup>th</sup> DAY OF Sept., 2002.

SIGNED & ACKNOWLEDGED  
IN THE PRESENCE OF:

Barbara J. Strayer  
PRINTED: Barbara J. Strayer  
Glen M. VanderKooi  
PRINTED: Glen M. VanderKooi

BY: Robert J. Verheulen, THE VICE PRESIDENT OF MEIJER GROUP, INC. THE GENERAL PARTNER OF MEIJER STORES LIMITED PARTNERSHIP, A MICHIGAN LIMITED PARTNERSHIP.

STATE OF OHIO SS

THE FOREGOING PLAT WAS ACKNOWLEDGED BEFORE ME THIS 25<sup>th</sup> DAY OF Sept., 2002 BY Robert J. Verheulen, THE VICE PRESIDENT OF MEIJER GROUP, INC. THE GENERAL PARTNER OF MEIJER STORES LIMITED PARTNERSHIP, A MICHIGAN LIMITED PARTNERSHIP. FOR AND ON BEHALF OF THE CORPORATION.

MY COMMISSION EXPIRES April 16, 2004  
Barbara J. Strayer  
NOTARY PUBLIC, STATE OF Michigan

APPROVED THIS 15<sup>th</sup> DAY OF October 2002.  
Elmer Olson  
PLANNING COMMISSION CHAIRMAN  
CITY OF LONDON

APPROVED THIS 8<sup>th</sup> DAY OF October 2002.  
David R. Eades  
MAYOR, CITY OF LONDON

APPROVED THIS 8<sup>th</sup> DAY OF October 2002.  
[Signature]  
SAFETY-SERVICE DIRECTOR

TRANSFERRED THIS \_\_\_\_\_ DAY OF \_\_\_\_\_ 2002.  
\_\_\_\_\_  
AUDITOR, MADISON COUNTY, OHIO

FILED FOR RECORD THIS \_\_\_\_\_ DAY OF \_\_\_\_\_, 2002. AT \_\_\_\_\_, \_\_\_\_\_M

FEE \$ \_\_\_\_\_ FILE NO. \_\_\_\_\_  
RECORDED, MADISON COUNTY, OHIO

RECORDED THIS \_\_\_\_\_ DAY OF \_\_\_\_\_, 2002, IN PLAT BOOK \_\_\_\_\_

### BASIS OF BEARINGS

THE BEARINGS SHOWN HEREON ARE BASED ON THE GRID BEARING OF NORTH 37°22' 00" EAST FOR THE CENTERLINE OF LAFAYETTE ROAD AS DETERMINED BY A GPS NETWORK OF FIELD OBSERVATIONS PERFORMED IN MAY, 2000.

WE DO HEREBY CERTIFY THAT WE HAVE SURVEYED THE ATTACHED PREMISES, PREPARED THE ATTACHED PLAT, AND THAT SAID PLAT IS CORRECT. ALL DIMENSIONS ARE SHOWN IN FEET AND DECIMAL PARTS THEREOF. DIMENSIONS SHOWN ALONG CURVES ARE CHORD MEASUREMENTS. 3/4-INCH CAPPED IRON PINS, PERMANENT MONUMENTS, ARE TO BE PLACED UPON COMPLETION OF CONSTRUCTION NECESSARY TO THE IMPROVEMENT OF THIS LAND AND ARE INDICATED BY THE FOLLOWING SYMBOL:

**R.D.Zande & Associates**  
1237 DUBLIN ROAD  
COLUMBUS, OHIO 43215



BY: [Signature] REGISTERED SURVEYOR NO. 7455  
DATE: 08/05/02



DOMINION HOMES, INC.  
16.996 ACRES (ORIG.)  
O.R. 128, PG. 1087

DOMINION HOMES, INC.  
17.263 ACRES (ORIG.)  
O.R.147 , PG. 779

MTB, CORP.  
194.677 ACRES  
D.B. 298, PG. 400

MEIJER STORES LIMITED PARTNERSHIP  
28.535 ACRES  
O.R. 118, PG. 433

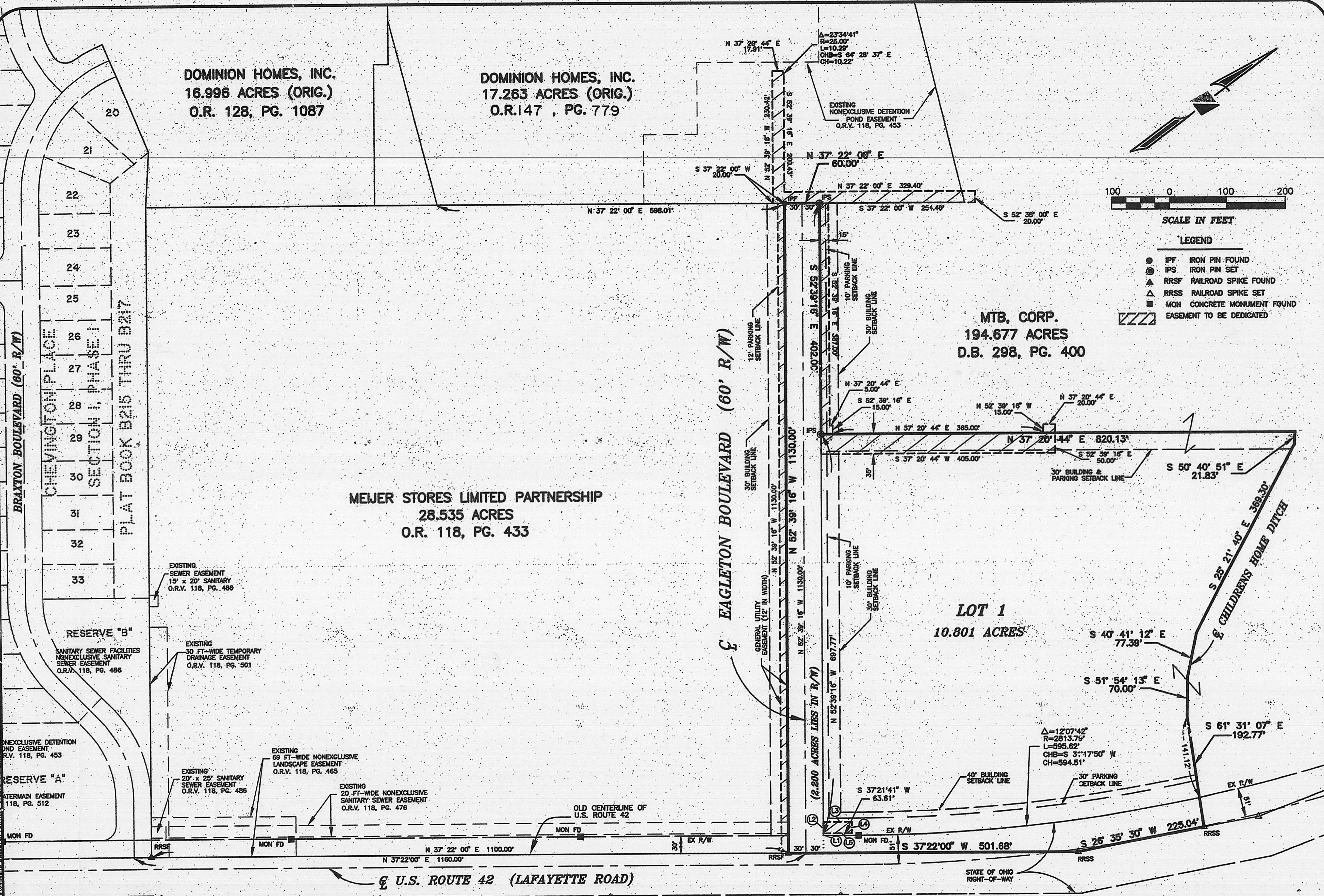
LOT 1  
10.801 ACRES



SCALE IN FEET

LEGEND

- IFF IRON PIN FOUND
- ⊙ IPS IRON PIN SET
- ▲ RRSF RAILROAD SPIKE FOUND
- △ RRS S RAILROAD SPIKE SET
- MON CONCRETE MONUMENT FOUND
- ▨ EASEMENT TO BE DEDICATED



BRAXTON BOULEVARD (60' R/W)  
CHEVINGTON PLACE  
SECTION I, PHASE I  
PLAT BOOK B215 THRU B217

RESERVE "B"  
SANITARY SEWER FACILITIES  
NONEXCLUSIVE SANITARY  
SEWER EASEMENT  
O.R.V. 118, PG. 486

RESERVE "A"  
WATERMAIN EASEMENT  
118, PG. 512

MON FD

RRSF

RRS

EX R/W

STATE OF OHIO  
RIGHT-OF-WAY

2,200 ACRES LIES IN R/W

GENERAL UTILITY  
EASEMENT (12' IN WIDTH)

12' PARKING  
SETBACK LINE

10' PARKING  
SETBACK LINE

30' BUILDING  
SETBACK LINE

30' BUILDING  
SETBACK LINE

30' BUILDING &  
PARKING SETBACK LINE

30' BUILDING  
SETBACK LINE

30' BUILDING  
SETBACK LINE

30' BUILDING  
SETBACK LINE

30' BUILDING  
SETBACK LINE

30' BUILDING  
SETBACK LINE

30' BUILDING  
SETBACK LINE

30' BUILDING  
SETBACK LINE

30' BUILDING  
SETBACK LINE

30' BUILDING  
SETBACK LINE

30' BUILDING  
SETBACK LINE

30' BUILDING  
SETBACK LINE

30' BUILDING  
SETBACK LINE

30' BUILDING  
SETBACK LINE

30' BUILDING  
SETBACK LINE

30' BUILDING  
SETBACK LINE

30' BUILDING  
SETBACK LINE

30' BUILDING  
SETBACK LINE

30' BUILDING  
SETBACK LINE

30' BUILDING  
SETBACK LINE

30' BUILDING  
SETBACK LINE

30' BUILDING  
SETBACK LINE

30' BUILDING  
SETBACK LINE

30' BUILDING  
SETBACK LINE

30' BUILDING  
SETBACK LINE

30' BUILDING  
SETBACK LINE

30' BUILDING  
SETBACK LINE

30' BUILDING  
SETBACK LINE

30' BUILDING  
SETBACK LINE

30' BUILDING  
SETBACK LINE

30' BUILDING  
SETBACK LINE

30' BUILDING  
SETBACK LINE

30' BUILDING  
SETBACK LINE

30' BUILDING  
SETBACK LINE

30' BUILDING  
SETBACK LINE

30' BUILDING  
SETBACK LINE

30' BUILDING  
SETBACK LINE

30' BUILDING  
SETBACK LINE

30' BUILDING  
SETBACK LINE

30' BUILDING  
SETBACK LINE

30' BUILDING  
SETBACK LINE

30' BUILDING  
SETBACK LINE

30' BUILDING  
SETBACK LINE

30' BUILDING  
SETBACK LINE

30' BUILDING  
SETBACK LINE

30' BUILDING  
SETBACK LINE

30' BUILDING  
SETBACK LINE

30' BUILDING  
SETBACK LINE

30' BUILDING  
SETBACK LINE

30' BUILDING  
SETBACK LINE

30' BUILDING  
SETBACK LINE

30' BUILDING  
SETBACK LINE

30' BUILDING  
SETBACK LINE

30' BUILDING  
SETBACK LINE

30' BUILDING  
SETBACK LINE

30' BUILDING  
SETBACK LINE

30' BUILDING  
SETBACK LINE

30' BUILDING  
SETBACK LINE

30' BUILDING  
SETBACK LINE

30' BUILDING  
SETBACK LINE

30' BUILDING  
SETBACK LINE

30' BUILDING  
SETBACK LINE

30' BUILDING  
SETBACK LINE

30' BUILDING  
SETBACK LINE

30' BUILDING  
SETBACK LINE

30' BUILDING  
SETBACK LINE

30' BUILDING  
SETBACK LINE

30' BUILDING  
SETBACK LINE

30' BUILDING  
SETBACK LINE

30' BUILDING  
SETBACK LINE

30' BUILDING  
SETBACK LINE

30' BUILDING  
SETBACK LINE

30' BUILDING  
SETBACK LINE

30' BUILDING  
SETBACK LINE

30' BUILDING  
SETBACK LINE

30' BUILDING  
SETBACK LINE

30' BUILDING  
SETBACK LINE

30' BUILDING  
SETBACK LINE

30' BUILDING  
SETBACK LINE

30' BUILDING  
SETBACK LINE

30' BUILDING  
SETBACK LINE

30' BUILDING  
SETBACK LINE

30' BUILDING  
SETBACK LINE

30' BUILDING  
SETBACK LINE

30' BUILDING  
SETBACK LINE

30' BUILDING  
SETBACK LINE

30' BUILDING  
SETBACK LINE

30' BUILDING  
SETBACK LINE

30' BUILDING  
SETBACK LINE

30' BUILDING  
SETBACK LINE

30' BUILDING  
SETBACK LINE

30' BUILDING  
SETBACK LINE

30' BUILDING  
SETBACK LINE

30' BUILDING  
SETBACK LINE

30' BUILDING  
SETBACK LINE

EXISTING SEWER EASEMENT  
15' x 20' SANITARY  
O.R.V. 118, PG. 486

EXISTING 30 FT-WIDE TEMPORARY  
DRAINAGE EASEMENT  
O.R.V. 118, PG. 501

EXISTING 69 FT-WIDE NONEXCLUSIVE  
LANDSCAPE EASEMENT  
O.R.V. 118, PG. 485

EXISTING 20' x 25' SANITARY  
SEWER EASEMENT  
O.R.V. 118, PG. 486

EXISTING 20 FT-WIDE NONEXCLUSIVE  
SANITARY SEWER EASEMENT  
O.R.V. 118, PG. 476

OLD CENTERLINE OF  
U.S. ROUTE 42

MON FD

EX R/W

RRSF

RRS

EX R/W

STATE OF OHIO  
RIGHT-OF-WAY

2,200 ACRES LIES IN R/W

GENERAL UTILITY  
EASEMENT (12' IN WIDTH)

12' PARKING  
SETBACK LINE

10' PARKING  
SETBACK LINE

30' BUILDING  
SETBACK LINE

30' BUILDING  
SETBACK LINE

30' BUILDING &  
PARKING SETBACK LINE

30' BUILDING  
SETBACK LINE

30' BUILDING  
SETBACK LINE

30' BUILDING  
SETBACK LINE

30' BUILDING  
SETBACK LINE

30' BUILDING  
SETBACK LINE

30' BUILDING  
SETBACK LINE

30' BUILDING  
SETBACK LINE

30' BUILDING  
SETBACK LINE

30' BUILDING  
SETBACK LINE

30' BUILDING  
SETBACK LINE

30' BUILDING  
SETBACK LINE

30' BUILDING  
SETBACK LINE

30' BUILDING  
SETBACK LINE

30' BUILDING  
SETBACK LINE

30' BUILDING  
SETBACK LINE

30' BUILDING  
SETBACK LINE

30' BUILDING  
SETBACK LINE

30' BUILDING  
SETBACK LINE

30' BUILDING  
SETBACK LINE

30' BUILDING  
SETBACK LINE

30' BUILDING  
SETBACK LINE

30' BUILDING  
SETBACK LINE

30' BUILDING  
SETBACK LINE

30' BUILDING  
SETBACK LINE

30' BUILDING  
SETBACK LINE

30' BUILDING  
SETBACK LINE

30' BUILDING  
SETBACK LINE

30' BUILDING  
SETBACK LINE

30' BUILDING  
SETBACK LINE

30' BUILDING  
SETBACK LINE

30' BUILDING  
SETBACK LINE

30' BUILDING  
SETBACK LINE

30' BUILDING  
SETBACK LINE

30' BUILDING  
SETBACK LINE

30' BUILDING  
SETBACK LINE

30' BUILDING  
SETBACK LINE

30' BUILDING  
SETBACK LINE

30' BUILDING  
SETBACK LINE

30' BUILDING  
SETBACK LINE

30' BUILDING  
SETBACK LINE

30' BUILDING  
SETBACK LINE

30' BUILDING  
SETBACK LINE

30' BUILDING  
SETBACK LINE

30' BUILDING  
SETBACK LINE

30' BUILDING  
SETBACK LINE

30' BUILDING  
SETBACK LINE

30' BUILDING  
SETBACK LINE

30' BUILDING  
SETBACK LINE

30' BUILDING  
SETBACK LINE

30' BUILDING  
SETBACK LINE

30' BUILDING  
SETBACK LINE

30' BUILDING  
SETBACK LINE

30' BUILDING  
SETBACK LINE

30' BUILDING  
SETBACK LINE

30' BUILDING  
SETBACK LINE

30' BUILDING  
SETBACK LINE

30' BUILDING  
SETBACK LINE

30' BUILDING  
SETBACK LINE

30' BUILDING  
SETBACK LINE

30' BUILDING  
SETBACK LINE

30' BUILDING  
SETBACK LINE

30' BUILDING  
SETBACK LINE

30' BUILDING  
SETBACK LINE

30' BUILDING  
SETBACK LINE

30' BUILDING  
SETBACK LINE

30' BUILDING  
SETBACK LINE

30' BUILDING  
SETBACK LINE

30' BUILDING  
SETBACK LINE

30' BUILDING  
SETBACK LINE

30' BUILDING  
SETBACK LINE

30' BUILDING  
SETBACK LINE

30' BUILDING  
SETBACK LINE

30' BUILDING  
SETBACK LINE

30' BUILDING  
SETBACK LINE

30' BUILDING  
SETBACK LINE

30' BUILDING  
SETBACK LINE

30' BUILDING  
SETBACK LINE

30' BUILDING  
SETBACK LINE

30' BUILDING  
SETBACK LINE

30' BUILDING  
SETBACK LINE

30' BUILDING  
SETBACK LINE

30' BUILDING  
SETBACK LINE

30' BUILDING  
SETBACK LINE

30' BUILDING  
SETBACK LINE

30' BUILDING  
SETBACK LINE

△=2334'41"  
R=25.00'  
L=10.29'  
CH=S 64° 28' 37" E  
CH=10.22'

△=1207'42"  
R=2813.79'  
L=595.62'  
CH=S 31°17'50" W  
CH=594.51'

△=1207'42"  
R=2813.79'  
L=595.62'  
CH=S 31°17'50" W  
CH=594.51'

△=1207'42"  
R=2813.79'  
L=595.62'  
CH=S 31°17'50" W  
CH=594.51'

△=1207'42"  
R=2813.79'  
L=595.62'  
CH=S 31°17'50" W  
CH=594.51'

△=1207'42"  
R=2813.79'  
L=595.62'  
CH=S 31°17'50" W  
CH=594.51'

△=1207'42"  
R=2813.79'  
L=595.62'  
CH=S 31°17'50" W  
CH=594.51'

△=1207'42"  
R=2813.79'  
L=595.62'  
CH=S 31°17'50" W  
CH=594.51'

△=1207'42"  
R=2813.79'  
L=595.62'  
CH=S 31°17'50" W  
CH=594.51'

△=1207'42"  
R=2813.79'  
L=595.62'  
CH=S 31°17'50" W  
CH=594.51'

△=1207'42"  
R=2813.79'  
L=595.62'  
CH=S 31°17'50" W  
CH=594.51'

△=1207'42"  
R=2813.79'  
L=595.62'  
CH=S 31°17'50" W  
CH=594.51'

△=1207'42"  
R=2813.79'  
L=595.62'  
CH=S 31°17'50" W  
CH=594.51'