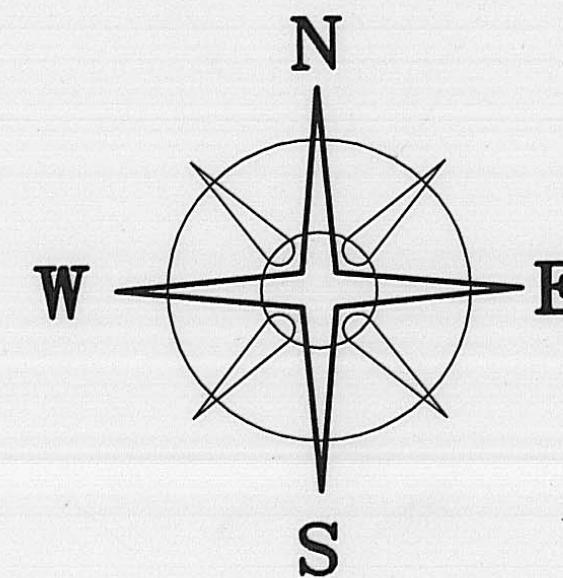


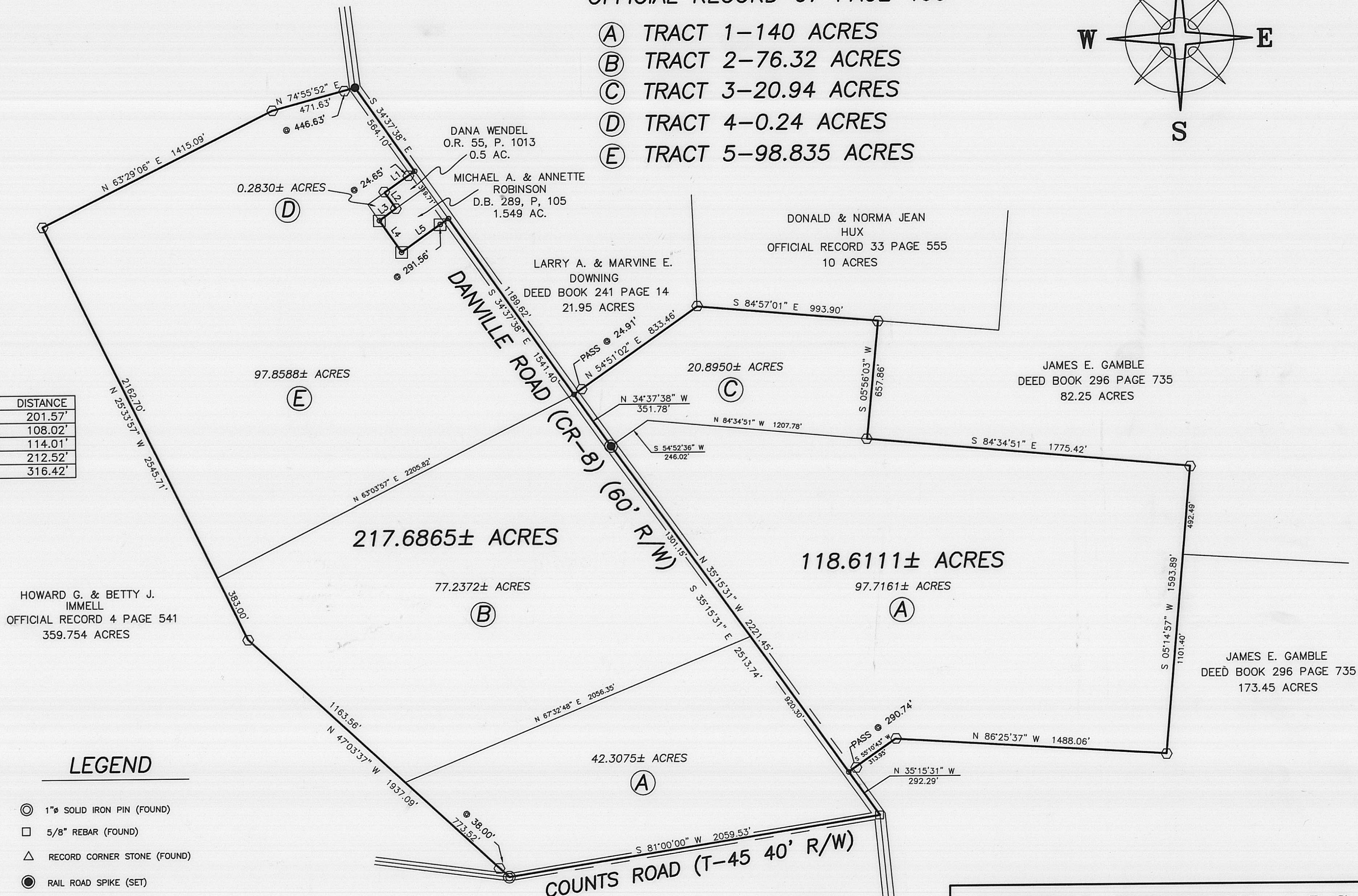
DEED REFERENCE

JAMES R. WILSON SR. (TRUSTEE)
OFFICIAL RECORD 67 PAGE 466

- (A) TRACT 1-140 ACRES
- (B) TRACT 2-76.32 ACRES
- (C) TRACT 3-20.94 ACRES
- (D) TRACT 4-0.24 ACRES
- (E) TRACT 5-98.835 ACRES



LINE	BEARING	DISTANCE
L1	S 54°58'23" W	201.57'
L2	S 34°42'42" E	108.02'
L3	S 54°32'17" W	114.01'
L4	S 34°21'38" E	212.52'
L5	N 54°40'03" E	316.42'



LEGEND

- ⊙ 1" SOLID IRON PIN (FOUND)
 - 5/8" REBAR (FOUND)
 - △ RECORD CORNER STONE (FOUND)
 - RAIL ROAD SPIKE (SET)
 - RAIL ROAD SPIKE (FOUND)
 - ⊠ MAG NAIL (SET) IN TOP OF 16" SQUARE CONCRETE FENCE POST
 - MAG NAIL (SET)
 - ⬡ 5/8" REBAR & YELLOW PLASTIC CAP STAMPED "COTTRILL 6858" (SET)
- ALL MONUMENTS FOUND OR SET ARE IN GOOD CONDITION UNLESS OTHERWISE NOTED.
- TAX MAP PARCEL NUMBER



I HEREBY CERTIFY THAT THIS PLAT DEPICTS AN ACTUAL FIELD SURVEY PERFORMED BY JAMES R. COTTRILL P.S. #6858
James R. Cottrill DATE: 7/19/05

COTTRILL SURVEYING, L.L.C.
8256 S.R. 207 N.E. MT. STERLING, OHIO 43143 PH. (740) 869-3811

118.6111 ACRES & 217.6865 ACRES, V.M.S.
6049 & 6391-7894-9651-9697, RANGE TWP.
MADISON COUNTY, STATE OF OHIO
SURVEYED FOR JAMES R. WILSON

DATE DRAWN: 7/13/05	SCALE: 1" = 400'	CREW: MW, NC
JOB #S050705	400' 200' 0 400'	DWN. BY: MW
F. B. #37		CK. BY: RC

100-05

118.6111 Acre Tract
Surveyed for James R. Wilson

The following described 118.6111 acre tract is situated in the State of Ohio, Madison County, Range Township, VMS 6049 and 6391/7894/9651/9697, and being all that remains of a 20.94 acre tract (tract 3) and part of a 140 acre tract (tract 1) both tracts conveyed to James R. Wilson Sr. (trustee) by official record 67 page 466, and being more particularly described as follows:

Commencing at a 5/8 inch Rebar found at the centerline intersection of Counts Road (Township Road 45)(40 ft. right-of-way) with Danville Road (County Road 8)(60 ft. right-of-way), said point is corner to said 140 acre tract;

Thence, with the centerline of said Danville Road, North 35° 15 minutes 31 seconds West a distance of 292.29 ft. to a mag nail set corner to a 173.45 acre tract conveyed to James E. Gamble by deed book 296 page 735, said nail is also corner to said 140 acre tract and **the true point beginning**;

Thence, continuing with the centerline of said Danville Road the following two courses:

- 1) North 35° 15 minutes 31 seconds West a distance of 2221.45 ft. to a railroad spike set at the western corner common to said 140 and said 20.94 acre tracts
- 2) North 34° 37 minutes 38 seconds West a distance of 351.78 ft. to a mag nail set at the southernmost corner of a 21.95 acre tract conveyed to Larry A. and Marvin E. Downing by deed book 241 page 14;

Thence, with the southeast line of said 21.95 acre tract, North 54° 51 minutes 02 seconds East, passing an iron pin and cap set at 24.91 ft., a total distance of a 833.46 ft. to an iron pin and cap set at the southwest corner of a 10 acre tract conveyed to Donald and Norma Jean Hux by official record 33 page 555;

Thence, with the south line of said 10 acre tract, South 84° 57 minutes 01 seconds East a distance of 993.90 ft. to iron pin and cap set corner to a 82.25 acre tract conveyed to James E. Gamble by deed book 296 page 735;

Thence, with said 82.25 acre tract the following 2 courses:

- 1) South 05° 56 minutes 03 seconds West a distance of 657.86 ft. to an iron pin and cap set at the southeast corner of said 20.94 acre tract
- 2) South 84° 34 minutes 51 seconds East a distance of 1775.42 ft. to an iron pin and cap set at the north east corner of said 140 acre tract

Thence, with the east line of said 140 acre tract, South 05° 14 minutes 57 seconds West, passing the northwest corner of said Gambill's 173.45 acre tract at 492.49 ft., a total distance of 1593.89 ft. to an iron pin and cap set

Thence, with said 173.45 acre tract the following 2 courses:

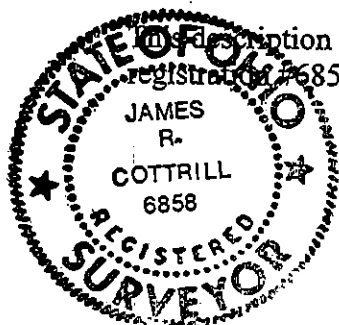
- 1) North 86° 25 minutes 37 seconds West a distance of 1488.06 ft. to an iron pin and cap set
- 2) South 55° 10 minutes 43 seconds West, passing an iron pin and cap set at 290.74 ft., a total distance of 313.95 ft. returning to **the true point beginning** containing 118.6111 acres more or less, of which 20.8950 acres more or less is all of said 20.94 acre tract, and 97.7161 acres more or less is part of said 140 acre tract.

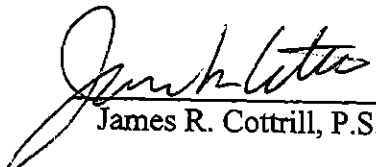
Bearings are based on the centerline of Counts Road (North 81° East) as described in official record 67 page 466.

This deed is subject to and with the benefit of all legal highways, restrictions, easements, limitations, and reservations, of record, if any and to zoning restrictions which have been imposed thereon, if any.

All iron pins set are 5/8 inch diameter rebar with yellow plastic caps stamped "Cottrill LLC 6858."

This description is based on a field survey performed July 14, 2005 by James R. Cottrill registered Professional Surveyor #6858. (Job #S050705)




James R. Cottrill, P.S.

217.6865 Acre Tract
Surveyed for James R. Wilson

The following described 217.6865 acre tract is situated in the State of Ohio, Madison County, Range Township, VMS 6049 and 6391/7894/9651/9697, and being part of a 140 acre tract (tract 1), and being all of a 76.32 acre tract (tract 2), and being all of a 98.835 acre tract (tract 5), and also all of a 0.24 acre tract (tract 4) all four tracts conveyed to James R. Wilson Sr. (trustee) by official record 67 page 466, and being more particularly described as follows:

Beginning at a 5/8 inch Rebar found at the centerline intersection of Counts Road (Township Road 45)(40 ft. right-of-way) with Danville Road (County Road 8)(60 ft. right-of-way), said point is corner to said 140 acre tract;

Thence, with the centerline of said Counts Road, South 81° 00 minutes 00 seconds West a distance of 2059.53 ft. to a 1 in. diameter solid iron pin found at the southeast corner of a 359.754 acre tract conveyed to Howard G. and Danny J. Emil by official record 4, page 541;

Thence, with said 359.754 acre tract the following 4 courses:

- 1) North 47° 03 minutes 37 seconds West, passing an iron pin and cap set at 38.00 ft., also passing the western corner common to said 140 and said 76.32 acre tracts at 773.52 ft., a total distance of 1937.09 ft. to an iron pin and cap set
- 2) North 25° 33 minutes 57 seconds West, passing the western corner common to said 76.32 and said 98.835 acre tracts at 383.00 ft., a total distance of 2545.71 ft. to an iron pin and cap set
- 3) North 63° 29 minutes 06 seconds East a distance of 1415.09 ft. to iron pin and cap set
- 4) North 74° 55 minutes 52 seconds East, passing an iron pin and cap set at 446.63 ft., a total distance of 471.63 ft. to a railroad spike found at an angle point in the centerline of said Danville Road

Thence, with the centerline of said Danville Road, South 34° 37 minutes 38 seconds East a distance of 564.10 ft. to a mag nail set at the northernmost corner of a 0.5 acre tract conveyed to Dana Wendel by official record 55 page 1013;

Thence, with said 0.5 acre tract the following 2 courses:

- 1) South 54° 58 minutes 23 seconds West, passing an iron pin and cap set at 24.65 ft., a total distance of 201.57 ft. to an iron pin and cap set
- 2) South 34° 42 minutes 42 seconds East a distance of 108.02 ft. to an iron pin and cap set in the northwest line of a 1.549 acre tract conveyed to Michael A. and Annette Robinson by deed book 289 page 105

Thence, with said 1.549 acre tract the following 3 courses:

- 1) South 54° 32 minutes 17 seconds West a distance of 114.01 ft. to a mag nail set in top of a 16 inch square concrete fence post found
- 2) South 34° 21 minutes 38 seconds East a distance of 212.52 ft. to a mag nail set in top of a 16 in. square concrete fence post found
- 3) North 54° 40 minutes 03 seconds East, passing a mag nail set in top of a 16 in. square concrete fence post found at 291.56 ft., a total distance of 316.42 ft. to a mag nail set in the centerline of said Danville Road

Thence, with the centerline of said Danville Road the following two courses:

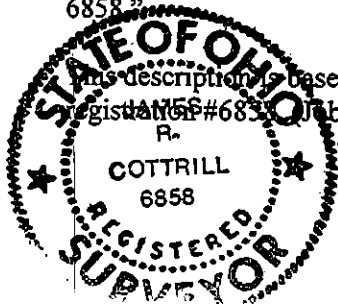
- 1) South 34° 37 minutes 38 seconds East, passing a mag nail set at the eastern corner common to said 98.835 and said 76.32 acre tract at 1189.62 ft., a total distance a 1541.40 ft. to a railroad spike set
- 2) South 35° 15 minutes 31 seconds East, passing a mag nail set at 2221.45 ft., a total distance of 2513.74 ft. returning to the point beginning containing 217.6865 acres more or less, of which 42.3075 acres more or less is part of said 140 acre tract, 77.2372 acres more or less is all of said 76.32 acre tract, 97.8588 acres more or less is all of said 98.835 acre tract, and 0.2830 acres more or less is all of said 0.24 acre tract.

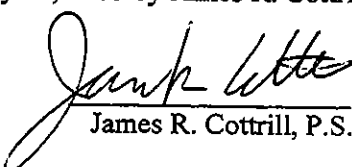
Bearings are based on the centerline of Counts Road (North 81° East) as described in official record 67 page 466.

This deed is subject to and with the benefit of all legal highways, restrictions, easements, limitations, and reservations, of record, if any and to zoning restrictions which have been imposed thereon, if any.

All iron pins set are 5/8 inch diameter rebar with yellow plastic caps stamped "Cottrill LLC 6858"

This description is based on a field survey performed July 14, 2005 by James R. Cottrill
Registration #6858 Job #S050705A)




James R. Cottrill, P.S.