

**PROPOSED ANNEXATION
OF
23.81± ACRES
TO
VILLAGE OF SOUTH SOLON**

Located in Virginia Military Survey No. 8582
Stokes Township, Madison County, Ohio



Prepared By
GGC Engineers
104 Mill Street
Gahanna, Ohio 43230

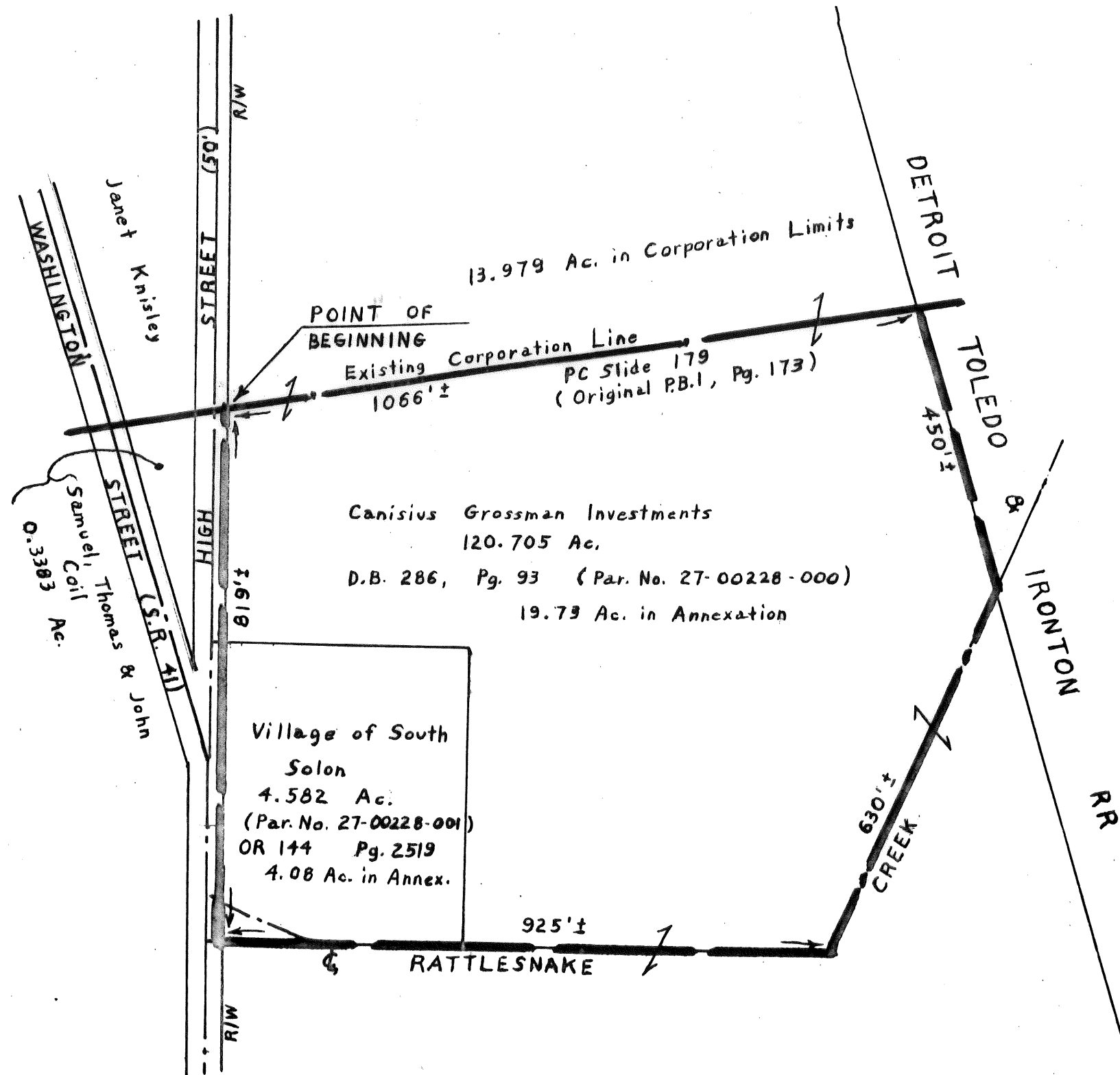
By Thomas D. Sibbalds
Thomas D. Sibbalds
Registered Surveyor No. 5908

Date: September 30, 2004

Scale: 1" = 200'

LEGEND

-  = Existing Corporation Line
-  = Proposed Corporation Line



PROPOSED ANNEXATION OF 23.81 ACRES
To: The Village of South Solon
From: Stokes Township, Madison County, Ohio

Situated in the State of Ohio, County of Madison, Township of Stokes, being located in Virginia Military Survey No. 8582 and bounded and described as follows;

Beginning at the point of intersection of the existing Village of South Solon corporation line, of record in Plat Cabinet Slide 179 (Originally Recorded in Plat Book 1, Page 173), with the Easterly right-of-way line of High Street (50 feet in width);

thence Northeasterly, with said existing Village of South Solon corporation line, a distance of approximately 1066 feet to the intersection of said corporation line with the Westerly right-of-way line of the Detroit, Toledo and Ironton Railroad;

thence Southerly, with said right-of-way line of the Detroit, Toledo and Ironton Railroad, a distance of approximately 450.± feet to a point in the centerline of Rattlesnake Creek;

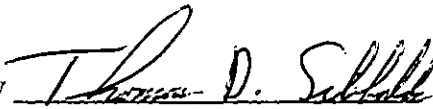
thence Southwesterly, with said centerline of Rattlesnake Creek, a distance of approximately 630 ± feet to an angle point in said line;

thence Westerly, continuing with said centerline of Rattlesnake Creek and the Southerly line of the Village of South Solon 4.582 acre tract, of record in Official Record 144, page 2519, a distance of approximately 925 ± feet to the intersection of said line with the Easterly right-of-way line of Washington Street (State Route 41);

thence Northerly, with said Easterly right-of-way line of Washington Street and the Easterly right-of-way line of High Street, a distance of approximately 819 ± feet to the place of beginning, containing approximately 23.8 acres, more or less.

The foregoing description was prepared from existing records only, on file in the Madison County Recorder's Office and does not represent an actual field survey by GGC Engineers.

GGC Engineers

By 
Thomas D. Sibbalds
Registered Surveyor Number 5908