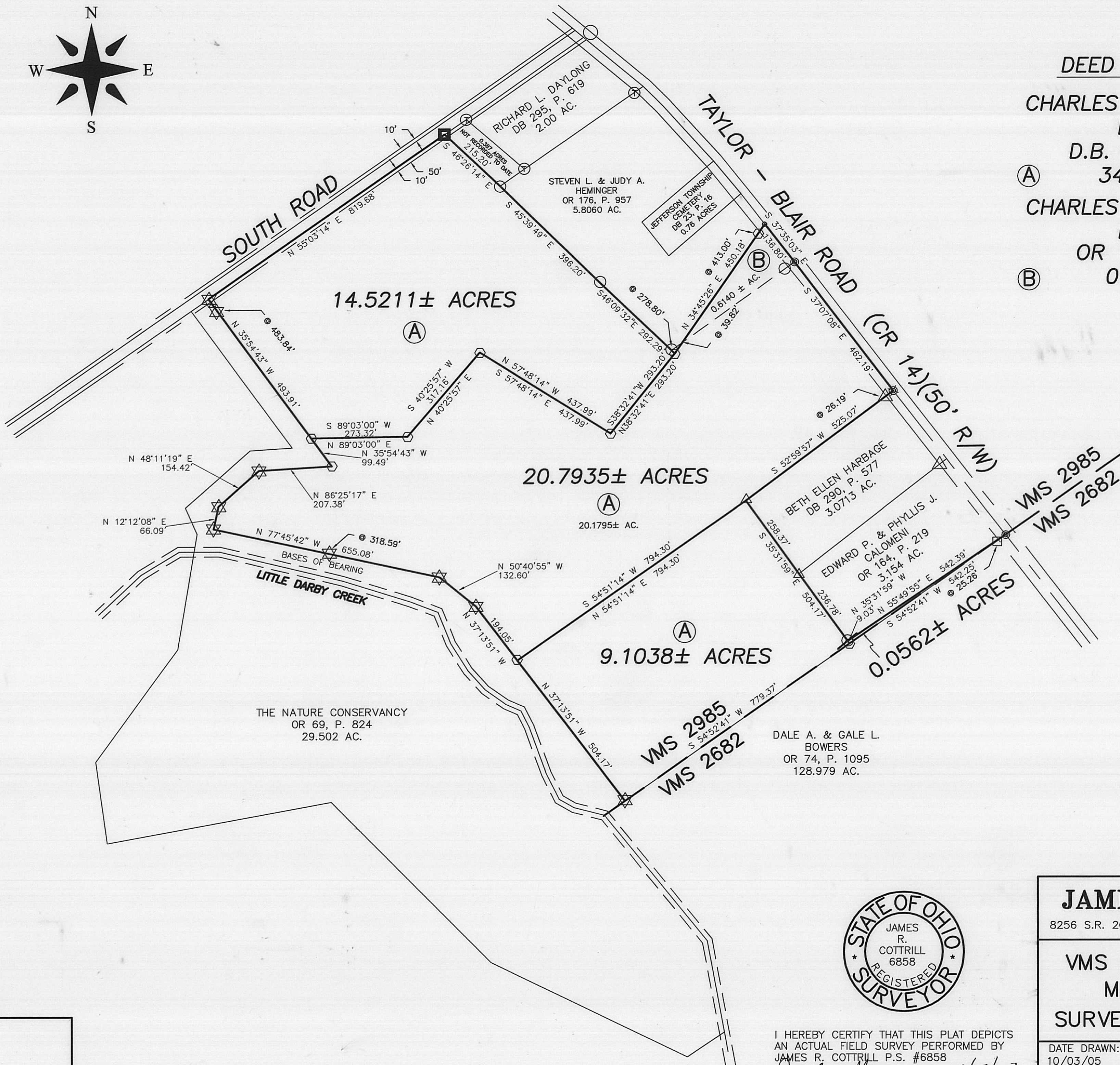
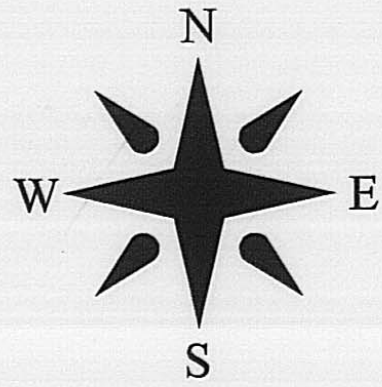


BEARINGS BASED ON THE NORTH EASTERN LINE
OF THE NATURE CONSERVANCY'S 29.502 ACRE
TRACT AS DESCRIBED IN OR 69, P. 824.



DEED REEFERENCE

CHARLES T. & CONNIE E.
HARBAGE
D.B. 258, P. 313
① 34.3988 AC.
CHARLES T. & CONNIE E.
HARBAGE
OR 176, P. 955
② 0.6140 AC.

LEGEND

- 3/4" Ø IRON PIPE & YELLOW PLASTIC CAP STAMPED "S-6578" (FD.)
 - ☆ 3/4" Ø IRON PIPE & YELLOW PLASTIC CAP STAMPED "S-6034" (FD.)
 - ⊗ 5/8" Ø REBAR & YELLOW PLASTIC CAP STAMPED "THOMAS ENG." (FD.)
 - △ IRON PIPE & AL. CAP STAMPED "NCB 5969" (FOUND)
 - Ⓣ 3/4" IRON T-BAR (FOUND)
 - 3/4" Ø IRON PIPE (FOUND)
 - 5/8" Ø REBAR (FOUND)
 - ⊙ P.K. NAIL (FOUND)
 - ⊗ MAG NAIL (SET)
 - CONCRETE NAIL & WASHER (PREVIOUSLY SET)
 - ⊗ 5/8" Ø REBAR & YELLOW PLASTIC CAP STAMPED "COTTRILL 6858" (SET)
- ALL MONUMENTS FOUND OR SET ARE IN GOOD CONDITION UNLESS OTHERWISE NOTED.
- TAX MAP PARCEL NUMBER



JAMES R. COTTRILL P.S.
8256 S.R. 207 N.E. MT. STERLING, OHIO 43143 PH. (740) 869-3811

VMS 2985, JEFFERSON TOWNSHIP,
MADISON COUNTY, OHIO.
SURVEYED FOR CHARLES HARBAGE.

I HEREBY CERTIFY THAT THIS PLAT DEPICTS
AN ACTUAL FIELD SURVEY PERFORMED BY
JAMES R. COTTRILL P.S. #6858
James R. Cottrill DATE: 10/5/05

DATE DRAWN: 10/03/05	SCALE: 1" = 200'	CREW: MW, TB
JOB #S050909	200' 100' 0 200'	DWN. BY: RC
F. B. # 38		CK. BY: _____

0.0562 Acre Tract
Surveyed for Charles Harbage

The following described 0.0562 acre tract is situated in the State of Ohio, Madison County, Jefferson Township, VMS 2985, being part of a 34.3988 acre tract conveyed to Charles T. and Connie E. Harbage by deed book 258 page 313, and being more particularly described as follows:

Beginning at a PK nail found in the centerline of Taylor Blair Road (County Road 14)(50 ft. right-of-way) said PK nail is at the northernmost corner of a 128.979 acre tract conveyed to Dale A. and Gale L. Bowers by official record 74 page 1095, said PK nail is also the easternmost corner of a 3.154 acre tract conveyed to Edward P. and Phyllis J. Calomeni by official record 164 page 219, said PK nail is also in the line between VMS 295 and 2682;

Thence, with said VMS line and the line between said 128.979 and said 34.3988 acre tracts, South 54° 52 minutes 41 seconds West, passing a 5/8 inch Rebar found at 25.26 ft., a total distance of 542.25 ft. to an iron pin and cap set;

Thence, with a new line across said 34.3988 acre tract, North 35° 31 minutes 59 seconds West a distance of 9.03 ft. to a 5/8 inch Rebar and yellow plastic caps stamped " Thomas Engineering" found at the southernmost corner of said 3.154 acre tract;

Thence, with the southeast line of said 3.154 acre tract, North 55° 49 minutes 55 seconds East a distance of 542.39 ft. returning to the point beginning containing 0.0562 acres more or less.

The hereinabove described 0.0562 acre tract is to become part of and contingent to said Calomeni's 3.154 acre tract.

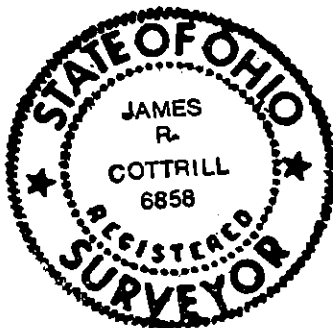
Bearings are based on a northeast line of the Nature Conservancy's 29.502 acre tract as described in official record 69 page 824.

This deed is subject to and with the benefit of all legal highways, restrictions, easements, limitations, and reservations, of record, if any and to zoning restrictions which have been imposed thereon, if any.

All iron pins set are 5/8 inch diameter rebar with yellow plastic caps stamped "Cottrill L.L.C. 6858."

This description is based on a field survey performed October 4, 2005 by James R. Cottrill registration #6858. (Job #S050909)


James R. Cottrill, P.S.



9.1038 Acre Tract
Surveyed for Charles Harbage

The following described 9.1038 acre tract is situated in the State of Ohio, Madison County, Jefferson Township, VMS 2985, being part of a 34.3988 acre tract conveyed to Charles T. and Connie E. Harbage by deed book 258 page 313, and being more particularly described as follows:

Beginning at a PK nail found in the centerline of Taylor Blair Road (County Road 14)(50 ft. right-of-way) said PK nail is at the northernmost corner of a 128.979 acre tract conveyed to Dale A. and Gale L. Bowers by official record 74 page 1095, said PK nail is also the easternmost corner of a 3.154 acre tract conveyed to Edward P. and Phyllis J. Calomeni by official record 164 page 219, said PK nail is also in the line between VMS 295 and 2682;

Thence, with said VMS line and the line between said 128.979 and said 34.3988 acre tracts, South 54° 52 minutes 41 seconds West, passing a 5/8 inch Rebar found at 25.26 ft., a total distance of 542.25 ft. to an iron pin and cap set at **the true point of beginning**;

Thence, continuing with said line, South 54° 52 minutes 41 seconds West a distance of 779.37 ft. to a 3/4 inch diameter iron pipe and yellow plastic caps stamped "S-6034" found corner to a 29.502 acre tract conveyed to The Nature Conservancy by official record 69 page 824;

Thence, with said 29.502 acre tract, North 37° 13 minutes 51 seconds West a distance of 504.17 ft. to an iron pin and cap set;

Thence, with a new line across said 34.3988 acre tract, North 54° 51 minutes 14 seconds East a distance of 794.30 ft. to an iron pipe and aluminum cap stamped "NCB 5969" found at the northwest corner of a 3.0713 acre tract conveyed to Beth Ellen Harbage by deed book 290 page 577;

Thence, with the west line of said 3.0713 acre tract, South 35° 31 minutes 59 seconds East, passing an iron pipe and aluminum cap stamped "NCB 5969" found at the northwest corner of said 3.154 acre tract at 258.37 ft., and continuing along the west line of said 3.154 acre tract, passing a 5/8 inch Rebar and yellow plastic cap stamped "Thomas Engineering" found at 495.15 ft., a total distance of 504.17 ft. returning to **the true point beginning** containing 9.1038 acres more or less.

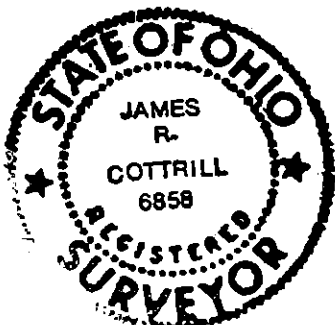
The hereinabove described 9.1038 acre tract is to become part of and contingent to said Harbage's 3.0713 acre tract.

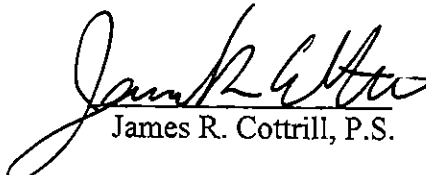
Bearings are based on a northeast line of the Nature Conservancy's 29.502 acre tract as described in official record 69 page 824.

This deed is subject to and with the benefit of all legal highways, restrictions, easements, limitations, and reservations, of record, if any and to zoning restrictions which have been imposed thereon, if any.

All iron pins set are 5/8 inch diameter rebar with yellow plastic caps stamped "Cottrill L.L.C. 6858."

This description is based on a field survey performed October 4, 2005 by James R. Cottrill registration #6858. (Job #S050909A)




James R. Cottrill, P.S.

14.5211 Acre Tract
Surveyed for Charles Harbage

The following described 14.5211 acre tract is situated in the State of Ohio, Madison County, Jefferson Township, VMS 2985, being part of a 34.3988 acre tract conveyed to Charles T. and Connie E. Harbage by deed book 258 page 313, and being more particularly described as follows:

Commencing at a concrete nail and washer previously set in the centerline of Taylor Blair Road (County Road 14)(50 ft. right-of-way) said nail is at the northernmost corner of a 0.6140 acre tract conveyed to Charles T. and Connie E. Harbage by official record 176 page 955, said nail is also the easternmost corner of a 5.8060 acre tract conveyed to Steven L. and Judy A. Heminger by official record 176 page 957;

Thence, with the southeast line of said 5.8060 acre tract, South 34° 45 minutes 26 seconds West a distance of 450.18 ft. to an iron pin and cap previously set at the southwest corner of said 5.8060 acre tract and **the true point beginning**;

Thence, across said 34.3988 acre tract with the following 4 new courses:

- 1) South 38° 32 minutes 41 seconds West a distance of 293.20 ft. to an iron pin and cap set
- 2) North 57° 48 minutes 14 seconds West a distance of 437.99 ft. to an iron pin and cap set
- 3) South 40° 25 minutes 57 seconds West a distance of 317.16 ft. to an iron pin and cap set
- 4) South 89° 03 minutes 00 seconds West a distance of 273.32 ft. to an iron pin and cap set in the line of a 29.502 acre tract conveyed to The Nature Conservancy by official record 69 page 824

Thence, with said 29.502 acre tract, North 35° 54 minutes 43 seconds West, passing a 3/4 inch diameter iron pipe and yellow caps stamped "S-6034" found in the south east right-of-way line of South Road at 483.84 ft., a total distance of 493.91 ft. to a 3/4 inch diameter iron pipe and yellow caps stamped "S-6034" found corner to said 29.502 and said 34.3988 acre tracts;

Thence, with the northwest line of said 34.3988 acre tract, North 55° 03 minutes 14 seconds East a distance of 819.68 ft. to a 3/4 inch diameter iron pipe and yellow plastic caps stamped "S-6578" found at the southwest corner of a 0.387 acre tract (not recorded to date);

Thence, with the southwest line of said 0.387 acre tract, South 46° 26 minutes 14 seconds East a distance of 215.20 ft. to a 3/4 diameter iron pipe found at the northwest corner of said 5.8060 acre tract;

Thence, with said 5.8060 acre tract the following two courses:

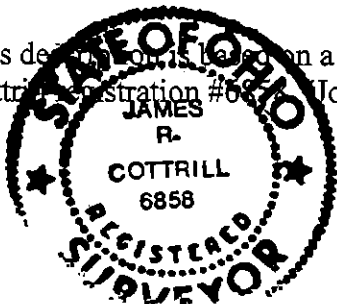
- 1) South 45° 39 minutes 49 seconds East a distance of 396.20 ft. to a 3/4 inch diameter iron pipe found
- 2) South 46° 09 minutes 32 seconds East, passing a 3/4 inch iron pipe found at 278.80 ft., a total distance of 292.29 ft. returning to **the true point beginning** containing 14.5211 acres more or less.


Bearings are based on a northeast line of the Nature Conservancy's 29.502 acre tract as described in official record 69 page 824.

This deed is subject to and with the benefit of all legal highways, restrictions, easements, limitations, and reservations, of record, if any and to zoning restrictions which have been imposed thereon, if any.

All iron pins set are 5/8 inch diameter rebar with yellow plastic caps stamped "Cottrill L.L.C. 6858."

This deed is based on a field survey performed October 4, 2005 by James R. Cottrill (Registration #6858 Job #S050909C)




James R. Cottrill, P.S.

20.7935 Acre Tract
Surveyed for Charles Harbage

The following described 20.7935 acre tract is situated in the State of Ohio, Madison County, Jefferson Township, VMS 2985, being part of a 34.3988 acre tract conveyed to Charles T. and Connie E. Harbage by deed book 258 page 313, and all of a 0.6140 acre tract conveyed to Charles T. and Connie E. Harbage by official record 176 page 955 and being more particularly described as follows:

Beginning at a concrete nail and washer previously set in the centerline of Taylor Blair Road (County Road 14)(50 ft. right-of-way) said nail is at the northernmost corner of said 0.6140 acre tract, said nail is also the easternmost corner of a 5.8060 acre tract conveyed to Steven L. and Judy A. Heminger by official record 176 page 957;

Thence, with the centerline of said Taylor-Blair Road, the following two courses:

- 1) South 37° 35 minutes 03 seconds East a distance of 136.80 ft. to a PK nail found corner to said 0.6140 and said 34.3988 acre tracts
- 2) South 37° 07 minutes 08 seconds East a distance of 462.19 ft. to a mag nail set at the northeast corner of a 3.0713 acre tract conveyed to Beth Ellen Harbage by deed book 290 page 577

Thence, with the northwest line of said 3.0713 acre tract, South 52° 59 minutes 57 seconds West, passing an iron pipe and aluminum cap stamped "NCB 5969" found at 26.19 ft., a total distance of 525.07 to an aluminum cap stamped "NCB 5969" found at the westernmost corner of said 3.0713 acre tract;

Thence, with a new line across said 34.3988 acre tract, South 54° 51 minutes 14 seconds West a distance of 794.30 ft. to an iron pin and cap set in the northeast line of a 29.502 acre tract conveyed to The Nature Conservancy by official record 69 page 824;

Thence, with said 29.502 acre tract the following seven courses:

- 1) North 37° 13 minutes 51 seconds West a distance of 194.05 ft. to a 3/4 inch diameter iron pipe and yellow caps stamped "S-6034" found
- 2) North 50° 40 minutes 55 seconds West a distance of 132.60 ft to a 3/4 inch diameter iron pipe and yellow caps stamped "S-6034" found
- 3) North 77° 45 minutes 42 seconds West, passing a 3/4 inch diameter iron pipe and yellow caps stamped "S-6034" found at 318.59 ft., a total distance of 655.08 ft. to a 3/4 inch diameter iron pipe and yellow caps stamped "S-6034" found
- 4) North 12° 12 minutes 08 seconds East a distance of 66.09 ft. to a 3/4 inch diameter iron pipe and yellow caps stamped "S-6034" found
- 5) North 48° 11 minutes 19 seconds East a distance of 154.42 ft. to a 3/4 inch diameter iron pipe and yellow caps stamped "S-6034" found
- 6) North 86° 25 minutes 17 seconds East a distance of 207.38 ft. to an iron pin and cap set
- 7) North 35° 54 minutes 43 seconds West a distance of 99.49 ft. to an iron pin and cap set

Thence, with the following four new courses across said 34.3988 acre tract:

- 1) North 89° 03 minutes 00 seconds East a distance of 273.32 ft. to an iron pin and cap set
- 2) North 40° 25 minutes 57 seconds East a distance of 317.16 ft. to an iron pin and cap set
- 3) South 57° 48 minutes 14 seconds East a distance of 437.99 ft. to an iron pin and cap set
- 4) North 38° 32 minutes 41 seconds East a distance of 293.20 ft. to an iron pin and cap previously set at the southernmost corner of said 5.0860 acre tract

Thence, with the southeast line of said 5.8060 acre tract, North 34° 45 minutes 26 seconds East, passing the western corner of said 0.6140 acre tract at 39.82 ft., also passing an iron pin and cap previously set at 413.00 ft., a total distance of 450.18 ft.

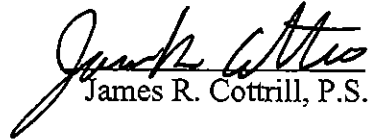
returning to the point beginning containing 20.7935 acres more or less, of which 0.6140 acres is all of said 0.6140 acre tract and 20.1795 acres is part of said 34.3988 acre tract.

Bearings are based on a northeast line of the Nature Conservancy's 29.502 acre tract as described in official record 69 page 824.

This deed is subject to and with the benefit of all legal highways, restrictions, easements, limitations, and reservations, of record, if any and to zoning restrictions which have been imposed thereon, if any.

All iron pins set are 5/8 inch diameter rebar with yellow plastic caps stamped "Cottrill L.L.C. 6858."

This description is based on a field survey performed October 4, 2005 by James R. Cottrill registration #6858. (Job #S050909B)


James R. Cottrill, P.S.

