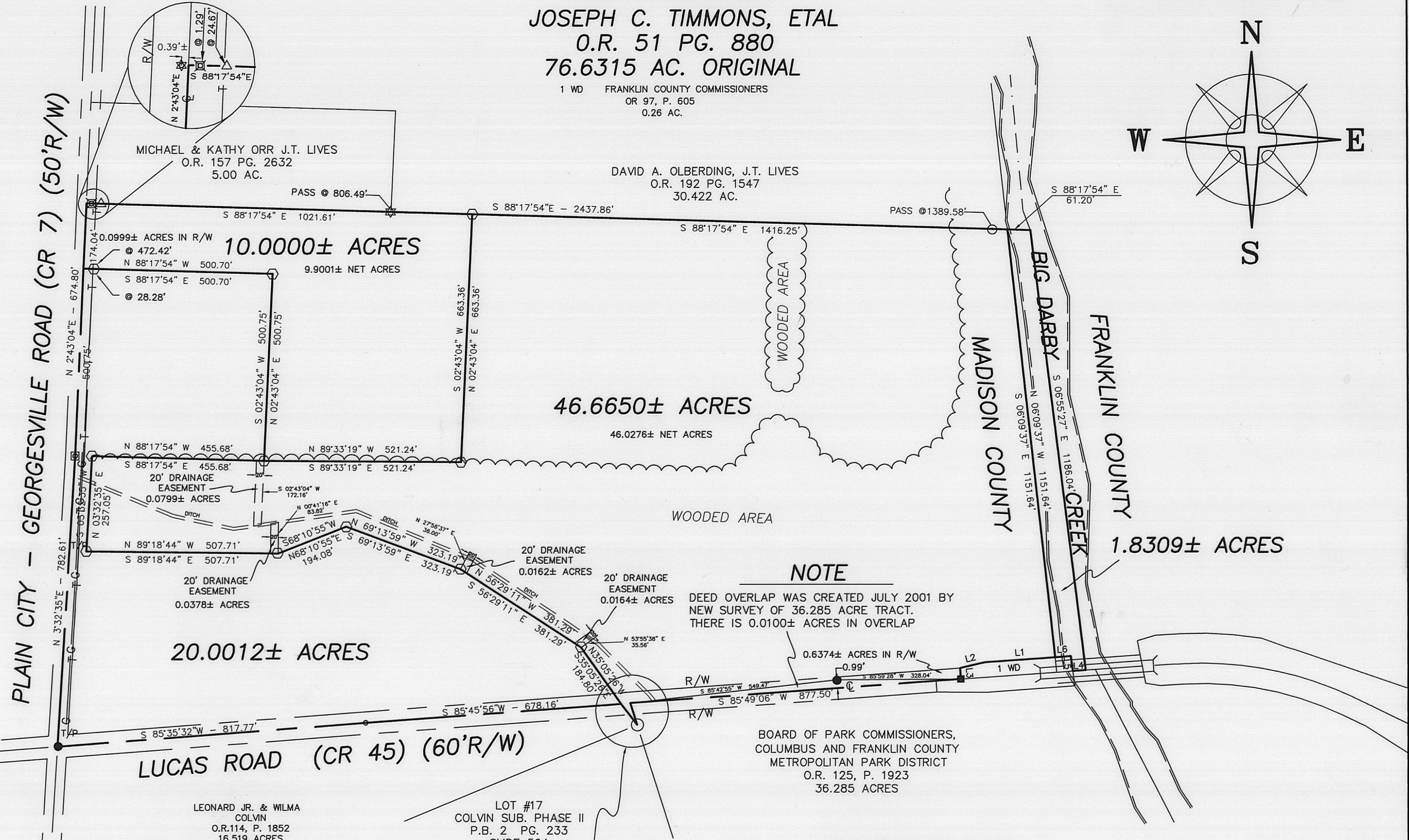
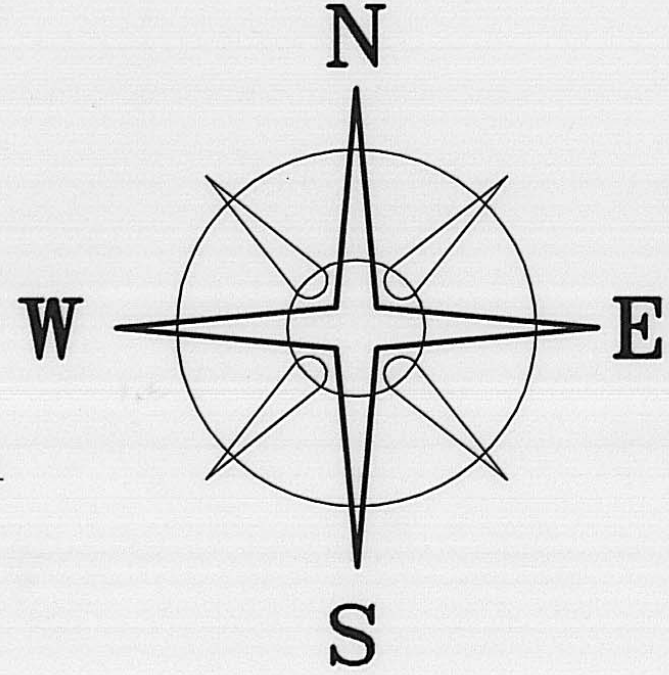


DEED REFERENCE

JOSEPH C. TIMMONS, ETAL
O.R. 51 PG. 880
76.6315 AC. ORIGINAL

1 WD FRANKLIN COUNTY COMMISSIONERS
 OR 97, P. 605
 0.26 AC.



MICHAEL & KATHY ORR J.T. LIVES
 O.R. 157 PG. 2632
 5.00 AC.

DAVID A. OLBERDING, J.T. LIVES
 O.R. 192 PG. 1547
 30.422 AC.

10.0000± ACRES
 9.9001± NET ACRES

46.6650± ACRES
 46.0276± NET ACRES

20.0012± ACRES

1.8309± ACRES

NOTE

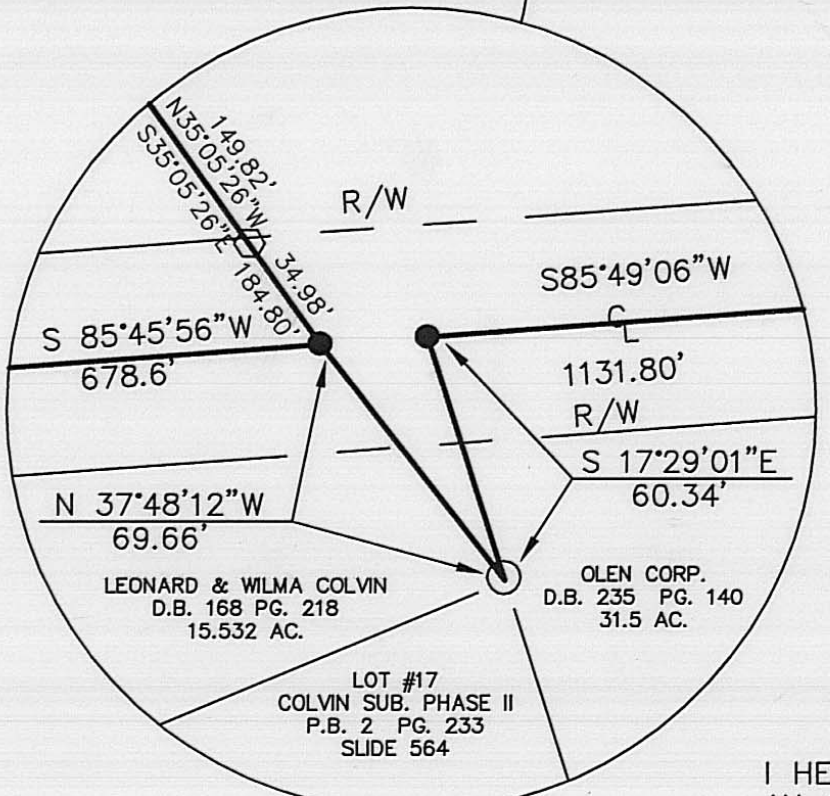
DEED OVERLAP WAS CREATED JULY 2001 BY NEW SURVEY OF 36.285 ACRE TRACT. THERE IS 0.0100± ACRES IN OVERLAP

BOARD OF PARK COMMISSIONERS, COLUMBUS AND FRANKLIN COUNTY METROPOLITAN PARK DISTRICT
 O.R. 125, P. 1923
 36.285 ACRES

LEGEND

- ☆ 3/4" STAINLESS STEEL COTTON PICKER (FOUND)
- ☒ IRON PIN FOUND
- 3/4" IRON PIPE (FOUND)
- MAG NAIL (SET)
- ☐ 1/2" DIA. SOLID IRON PIN (FOUND)
- △ IRON PIN & CAP STAMPED "PRYDAY 7277" (FOUND)
- ☆ 5/8" REBAR & CAP STAMPED "EDWARDS-7574 4792" (FOUND)
- RAIL ROAD SPIKE (FOUND)
- P K NAIL (FOUND)
- 5/8" REBAR & YELLOW PLASTIC CAP STAMPED "COTTRILL 6858" (SET)

CONDITION UNLESS OTHERWISE NOTED.
 ALL MONUMENTS FOUND OR SET ARE IN GOOD



LINE	BEARING	DISTANCE
L1	S 85°49'02" W	187.31'
L2	S 77°09'07" W	66.37'
L3	S 04°10'58" E	30.00'
L4	S 85°49'06" W	33.84'
L5	N 08°20'01" W	40.11'
L6	S 85°49'02" W	41.13'



I HEREBY CERTIFY THAT THIS PLAT DEPICTS AN ACTUAL FIELD SURVEY PERFORMED BY JAMES R. COTTRILL P.S. #6858
 James R. Cottrill DATE: 2/1/05

COTTRILL SURVEYING, LLC

8256 S.R. 207 N.E. MT. STERLING, OHIO 43143 PH. (614) 869-3811

76.8915 ACRES SPLIT, VMS 2681, CANAAN TOWNSHIP, MADISON COUNTY, STATE OF OHIO. SURVEYED FOR METRO PARKS

DATE DRAWN: 1/14/05	SCALE : 1" = 200'	CREW: MW, TB
JOB #S050105	200' 100' 0 200'	DWN. BY: RC, MW
F. B. # 36		CK. BY: RC

17.05

1.8309 Acre Tract
Surveyed for Metro Parks

The following described 1.8309 acre tract is situated in the State of Ohio, Madison County, Canaan Township, VMS 2681, present owner unknown, and being more particularly described as follows:

Beginning at an iron pin and cap set at the southeast corner of what remains of the original 76.6315 acre tract conveyed to Joseph C. Timmons, Et Al by official record 51 page 880, said iron pinning cap is also in the north line of a 0.26 acre tract (1 WD) conveyed to Franklin County commissioners by official record 97 page 605, said iron pinning cap is also on the west bank of the Big Darby Creek;

Thence, with the east line of said original 76.6315 acre tract and the west bank of said Big Darby Creek, North $06^{\circ} 09$ minutes 37 seconds West a distance of 1151.64 ft. to the northeast corner of said 76.6315 acre tract also corner to a 30.422 acre tract conveyed to David A. Olberding by official record 192 page 1547;

Thence, South $88^{\circ} 17$ minutes 54 seconds East a distance of 61.20 ft. to a point in the centerline of said Big Darby Creek also being in the line between Franklin and Madison County;

Thence, with the centerline of said Big Darby Creek and said County line, South $06^{\circ} 55$ minutes 27 seconds East a distance of 1186.04 ft. to a point in the centerline of Lucas Road (County Road 45);

Thence, with said centerline, South $85^{\circ} 49$ minutes 06 seconds West a distance of 33.84 ft. to the southeast corner of said 0.26 acre tract;

Thence, with said 0.26 acre tract the following two courses:

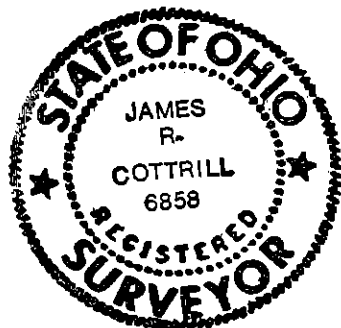
- 1) North $08^{\circ} 20$ minutes 01 seconds West a distance of 40.11 ft.
- 2) South $85^{\circ} 49$ minutes 02 seconds West a distance of 41.13 ft. returning to the point beginning containing 1.8309 acres more or less.

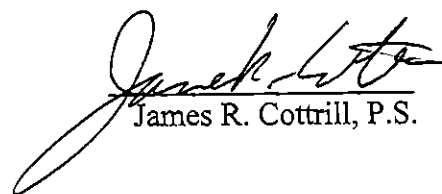
Bearings are based on the centerline of Lucas Road (South $85^{\circ} 35$ minutes 32 seconds West) as described in official record 51 page 880.

This deed is subject to and with the benefit of all legal highways, restrictions, easements, limitations, and reservations, of record, if any and to zoning restrictions which have been imposed thereon, if any.

All iron pins set are 5/8 inch diameter rebar with yellow plastic caps stamped "Cottrill 6858."

This description is based on a field survey performed January 27, 2005 by James R. Cottrill registration #6858. (Job #S050105C)




James R. Cottrill, P.S.

10.0000 Acre Tract
Surveyed for Metro Parks

The following described 10.0000 acre tract is situated in the State of Ohio, Madison County, Canaan Township, VMS 2681, being part of the original 76.6315 acre tract conveyed to Joseph C. Timmons, Et Al by official record 51 page 880, and being more particularly described as follows:

Beginning at a railroad spike found at the centerline intersection of Lucas Road (County Road 45)(60 ft. right-of-way) with the centerline of Plain City - Georgesville Road (County Road 7)(50 ft. right-of-way), said spike also being the southwest corner of said 76.6315 acre tract;

Thence, with the centerline of said Plain City - Georgesville Road, the following 2 courses:

- 1) North 3° 32 minutes 35 seconds East a distance of 782.61 ft. to iron pin found
- 2) North 2° 43 minutes 04 seconds East a distance of 500.75 ft. to a mag nail set in said centerline at **the true point of beginning**

Thence, continuing with the centerline of said Plain City - Georgesville Road, North 02° 43 minutes 04 seconds East a distance of 174.04 ft. to the southwest corner of a 5.00 acre tract conveyed to Michael and Kathy Orr by official record 157 page 2632;

Thence, with the south line of said 5.00 acre tract, South 88° 17 minutes 54 seconds East, passing an iron pin found at 1.29 ft., also passing an iron pin and cap stamped "Pryday 7277" found at 24.67 ft., also passing a 5/8 inch Rebar and cap stamped "Edwards 7574 4792" found at the southeast corner of a 30.422 acre tract conveyed to David A. Olberding by official record 192 page 1547 at 806.49 ft., a total distance of 1021.61 ft. to an iron pin and cap set;

Thence, across said 76.6315 acre tract the following 4 new courses:

- 1) South 02° 43 minutes 04 seconds West a distance of 663.36 ft. to iron pin and cap set
- 2) North 89° 33 minutes 19 seconds West a distance of 521 .24 ft. to an iron pin and cap set
- 3) North 02° 43 minutes 04 seconds East a distance of 500.75 ft. to iron pin and cap set
- 4) North 88° 17 minutes 54 seconds West, passing an iron pin and cap set at 472.42 ft., a total distance of 500.70 ft. returning to **the true point beginning** containing 10.0000 acres more or less.

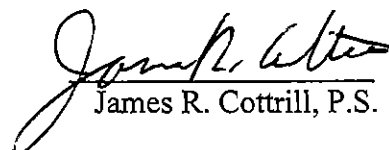
Bearings are based on the centerline of Lucas Road (South 85° 35 minutes 32 seconds West) as described in official record 51 page 880.

This deed is subject to and with the benefit of all legal highways, restrictions, easements, limitations, and reservations, of record, if any and to zoning restrictions which have been imposed thereon, if any.

All iron pins set are 5/8 inch diameter rebar with yellow plastic caps stamped "Cottrill 6858."

This description is based on a field survey performed January 27, 2005 by James R. Cottrill registration #6858. (Job #S050105A)




James R. Cottrill, P.S.

20.0012 Acre Tract
Surveyed for Metro Parks

The following described 20.0012 acre tract is situated in the State of Ohio, Madison County, Canaan Township, VMS 2681, being part of the original 76.6315 acre tract conveyed to Joseph C. Timmons, Et Al by official record 51 page 880, and being more particularly described as follows:

Beginning at a railroad spike found at the centerline intersection of Lucas Road (County Road 45)(60 ft. right-of-way) with the centerline of Plain City - Georgesville Road (County Road 7)(50 ft. right-of-way), said spike also being the southwest corner of said 76.6315 acre tract;

Thence, with the centerline of said Plain City Georgesville Road, the following 2 courses:

- 1) North 3° 32 minutes 35 seconds East a distance of 782.61 ft. to iron pin found
- 2) North 2° 43 minutes 04 seconds East a distance of 500.75 ft. to a mag nail set in said centerline

Thence, across said original 76.6315 acre tract the following 9 new courses:

- 1) South 88° 17 minutes 54 seconds East, passing an iron pin and cap set at 28.28 ft., a total distance of 500.70 ft. to iron pin and cap set
- 2) South 02° 43 minutes 04 seconds West a distance of 500.75 ft. to an iron pin and cap set
- 3) North 88° 17 minutes 54 seconds West a distance of 455.68 ft. to an iron pin and cap set
- 4) South 03° 32 minutes 35 seconds West a distance of 257.05 ft. to an iron pin and cap set
- 5) South 89° 18 minutes 44 seconds East a distance of 507.71 ft. to an iron pin and cap set
- 6) North 68° 10 minutes 55 seconds East a distance a 194.08 ft. to an iron pin and cap set
- 7) South 69° 13 minutes 59 seconds East a distance of 323.19 ft. to an iron pin and cap set
- 8) South 56° 29 minutes 11 seconds East a distance of 381.29 ft. to an iron pin and cap set
- 9) South 35° 05 minutes 26 seconds East, passing an iron pin and cap set at 149.82 ft., a total distance of 184.80 ft. to a railroad spike found in the centerline of said Lucas Road;

Thence, with the centerline of said Lucas Road the following two courses:

- 1) South 85° 45 minutes 56 seconds West a distance of 678.16 ft. to a PK nail found
- 2) South 85° 35 minutes 32 seconds West a distance of 817.77 ft. returning to the point beginning containing 20.0012 acres more or less.

Bearings are based on the centerline of Lucas Road (South 85° 35 minutes 32 seconds West) as described in official record 51 page 880.

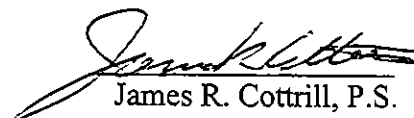
With the benefit of four 20 ft. wide drainage easements as shown on plat accompanying this legal description.

This deed is subject to and with the benefit of all legal highways, restrictions, easements, limitations, and reservations, of record, if any and to zoning restrictions which have been imposed thereon, if any.

All iron pins set are 5/8 inch diameter rebar with yellow plastic caps stamped "Cottrill 6858."

This description is based on a field survey performed January 27, 2005 by James R. Cottrill registration #6858 (Job #S050105)




James R. Cottrill, P.S.

46.6650 Acre Tract
Surveyed for Metro Parks

The following described 46.6650 acre tract is situated in the State of Ohio, Madison County, Canaan Township, VMS 2681, being part of the original 76.6315 acre tract conveyed to Joseph C. Timmons, Et Al by official record 51 page 880, and being more particularly described as follows:

Beginning at a railroad spike found at the centerline intersection of Lucas Road (County Road 45)(60 ft. right-of-way) with the centerline of Plain City - Georgesville Road (County Road 7)(50 ft. right-of-way), said spike also being the southwest corner of said 76.6315 acre tract;

Thence, with the centerline of said Lucas Road the following two courses:

- 1) North 85° 35 minutes 32 seconds East a distance of 817.77 ft. to a PK nail found
- 2) North 85° 45 minutes 56 seconds East a distance of 678.16 ft. to a railroad spike found in said centerline at the northeast corner of a 16.519 acre tract conveyed to Leonard Jr. and Wilma Colvin by official record 114 page 1852, said spike is also **the true point of beginning;**

Thence, across said 76.6315 acre tract the following 9 new courses:

- 1) North 35° 05 minutes 26 seconds West, passing an iron pin and cap set at 34.98 ft., a total distance of 184.80 ft. to an iron pin and cap set
- 2) North 56° 29 minutes 11 seconds West a distance of 381.29 ft. to an iron pin and cap set
- 3) North 69° 13 minutes 59 seconds West a distance of 323.19 ft. to an iron pin and cap set
- 4) South 68° 10 minutes 55 seconds West a distance a 194.08 ft. to an iron pin and cap set
- 5) North 89° 18 minutes 44 seconds West a distance of 507.71 ft. to an iron pin and cap set
- 6) North 03° 32 minutes 35 seconds East a distance of 257.05 ft. to an iron pin and cap set
- 7) South 88° 17 minutes 54 seconds East a distance of 455.68 ft. to an iron pin and cap set
- 8) South 89° 33 minutes 19 seconds East a distance of 521.24 ft. to iron pin and cap set
- 9) North 02° 43 minutes 04 seconds East a distance of 663.36 ft. to an iron pin and cap set in the south line of a 30.422 acre tract conveyed to David A. Olberding by official record 192 page 1547;

Thence, with the south line of said 30.422 acre tract, South 88° 17 minutes 54 seconds East, passing a 3/4 inch diameter iron pipe found at 1389.58 ft., a total distance a 1416.25 ft. to a point on the West Bank of Big Darby Creek;

Thence, with the east line of said 76.6315 acre tract also being the west bank of Big Darby Creek, South 06° 09 minutes 37 seconds East a distance of 1151.64 ft. to iron pin and cap set in the north line of a 0.26 acre tract conveyed to Franklin County commissioners by official record 97 page 605;

Thence, with said 0.26 acre tract the following 3 courses:

- 1) South 85° 49 minutes 02 seconds West a distance of 187.31 ft. to iron pin and cap set
- 2) South 77° 09 minutes 07 seconds West a distance of 66.37 ft. to an iron pin and cap set
- 3) South 04° 10 minutes 58 seconds East a distance of 30.00 ft. to a mag nail set in the centerline of said Lucas Road;

Thence, with the centerline of said Lucas Road, South 85° 49 minutes 06 seconds West a distance of 877.50 ft. to a railroad spike found at the northwest corner of a 36.285 acre tract conveyed to the Board of Park Commissioners, Columbus and Franklin County Metropolitan Park District by official record 125 page 1923;

Thence, with the west line of said 36.285 acre tract, South 17° 29 minutes 01 seconds East a distance of 60.34 ft. to a 3/4 inch diameter iron pipe found at the northeast corner of Lot number 17 of Colvin subdivision phase II as recorded in plat book 2 page 233 (slide 564), said pipe is also at the southeast corner of said Colvin's 16.519 acre tract;

Thence, with the east line of said 16.519 acre tract, North 37° 48 minutes 12 seconds West a distance of 69.66 ft. returning to **the true point beginning** containing 46.6650 acres more or less.

Bearings are based on the centerline of Lucas Road (South 85° 35 minutes 32 seconds West) as described in official record 51 page 880.

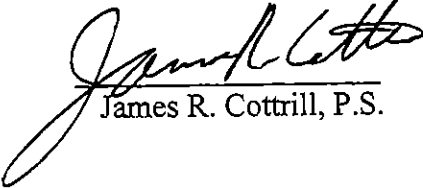
Subject to four 20 ft. wide drainage easements as shown on plat accompanying this legal description.

This deed is subject to and with the benefit of all legal highways, restrictions, easements, limitations, and reservations, of record, if any and to zoning restrictions which have been imposed thereon, if any.

All iron pins set are 5/8 inch diameter rebar with yellow plastic caps stamped "Cottrill 6858."

This description is based on a field survey performed January 27, 2005 by James R. Cottrill registration #6858. (Job #S050105B)




James R. Cottrill, P.S.