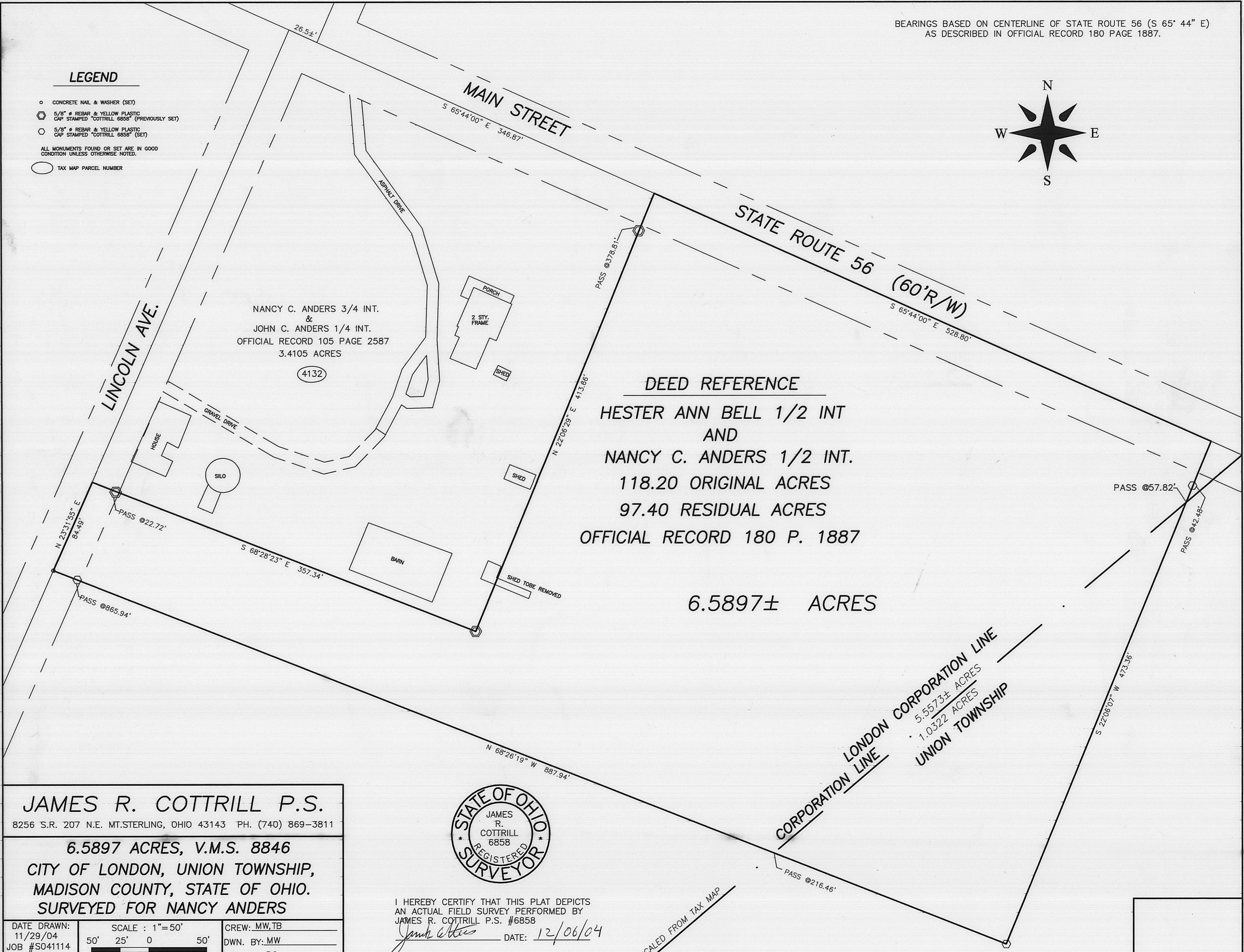


**LEGEND**

- CONCRETE NAIL & WASHER (SET)
  - ⊕ 5/8" ⌀ REBAR & YELLOW PLASTIC CAP STAMPED "COTTRILL 6858" (PREVIOUSLY SET)
  - 5/8" ⌀ REBAR & YELLOW PLASTIC CAP STAMPED "COTTRILL 6858" (SET)
- ALL MONUMENTS FOUND OR SET ARE IN GOOD CONDITION UNLESS OTHERWISE NOTED.
- TAX MAP PARCEL NUMBER



NANCY C. ANDERS 3/4 INT.  
&  
JOHN C. ANDERS 1/4 INT.  
OFFICIAL RECORD 105 PAGE 2587  
3.4105 ACRES

4132

DEED REFERENCE  
HESTER ANN BELL 1/2 INT  
AND  
NANCY C. ANDERS 1/2 INT.  
118.20 ORIGINAL ACRES  
97.40 RESIDUAL ACRES  
OFFICIAL RECORD 180 P. 1887

6.5897± ACRES

CORPORATION LINE  
LONDON CORPORATION LINE  
5.5573± ACRES  
1.0322 ACRES  
UNION TOWNSHIP

**JAMES R. COTTRILL P.S.**  
8256 S.R. 207 N.E. MT. STERLING, OHIO 43143 PH. (740) 869-3811

**6.5897 ACRES, V.M.S. 8846**  
CITY OF LONDON, UNION TOWNSHIP,  
MADISON COUNTY, STATE OF OHIO.  
SURVEYED FOR NANCY ANDERS



I HEREBY CERTIFY THAT THIS PLAT DEPICTS  
AN ACTUAL FIELD SURVEY PERFORMED BY  
JAMES R. COTTRILL P.S. #6858  
*James R. Cottrill* DATE: 12/06/04

DATE DRAWN: 11/29/04	SCALE : 1"=50' 50' 25' 0 50'	CREW: MW, TB
JOB #S041114		DWN. BY: MW
F. B. #36		CK. BY: RC

SCALED FROM TAX MAP

6.5897 Acre Tract  
Surveyed for Nancy Anders

The following described 6.5897 acre tract is situated in the State of Ohio, Madison County, city of London, Union Township, VMS 8846, and being part of the original 118.20 acre tract (97.40 residual acres) conveyed to Hester Ann Bell and Nancy C. Anders by official record 180 page 1887, and being more particularly described:

Beginning at the northeast corner of a 3.4105 acre tract conveyed to Nancy C. Anders and John C. Anders by official record 105 page 2587, said corner also being in the centerline of Main Street (State Route 56)(60 ft. right-of-way);

Thence, with the centerline of said Main Street, South 65° 44 minutes 00 seconds East a distance of 528.80 ft. to a point in said centerline;

Thence, across said 118.20 original acre tract the following two new courses:

- 1) South 22° 06 minutes 07 seconds West, passing an iron pin and cap set at 42.48 ft., also passing the London corporation line at 57.82 ft., a total distance of 473.36 ft. to an iron pin and cap set
- 2) North 68° 26 minutes 19 seconds West, passing the London corporation line at 216.46 ft., also passing an iron pin and cap set at 865.94 ft., a total distance of 887.94 ft. to a concrete nail and washer set in the centerline of Lincoln Ave.;

Thence, with the centerline of said Lincoln Ave., North 23° 31 minutes 55 seconds East a distance of 84.49 ft. to the southwest corner of said 3.4105 acre tract;

Thence, with said 3.4105 acre tract the following 2 courses:

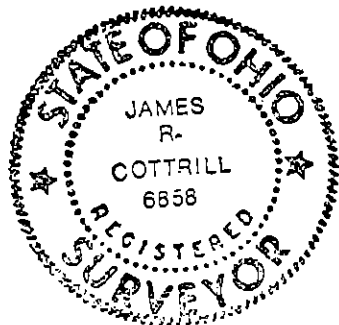
- 1) South 68° 28 minutes 23 seconds East, passing an iron pin and cap previously set at 22.72 ft., a total distance of 357.34 ft. to an iron pin and cap previously set
- 2) North 22° 06 minutes 29 seconds East, passing an iron pin and cap previously set at 378.81 ft., a total distance of 413.66 ft. returning to the point beginning containing 6.5897 acres more or less.

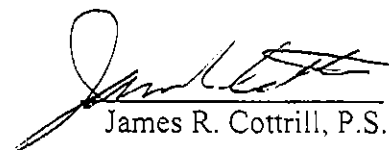
Bearings are based on the centerline of State Route 56 (South 65° 44 minutes East) as described in official record 180 page 1887.

This deed is subject to and with the benefit of all legal highways, restrictions, easements, limitations, and reservations, of record, if any and to zoning restrictions which have been imposed thereon, if any.

All iron pins set are 5/8 inch diameter rebar with yellow plastic caps stamped "Cottrill 6858."

This description is based on a field survey performed December 2, 2004 by James R. Cottrill registration #6858. (Job #S041114)



  
James R. Cottrill, P.S.