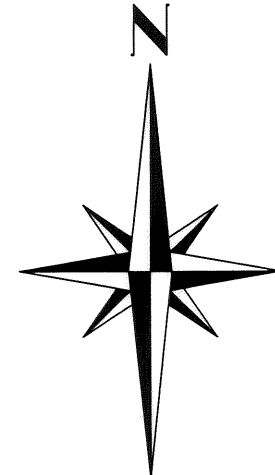


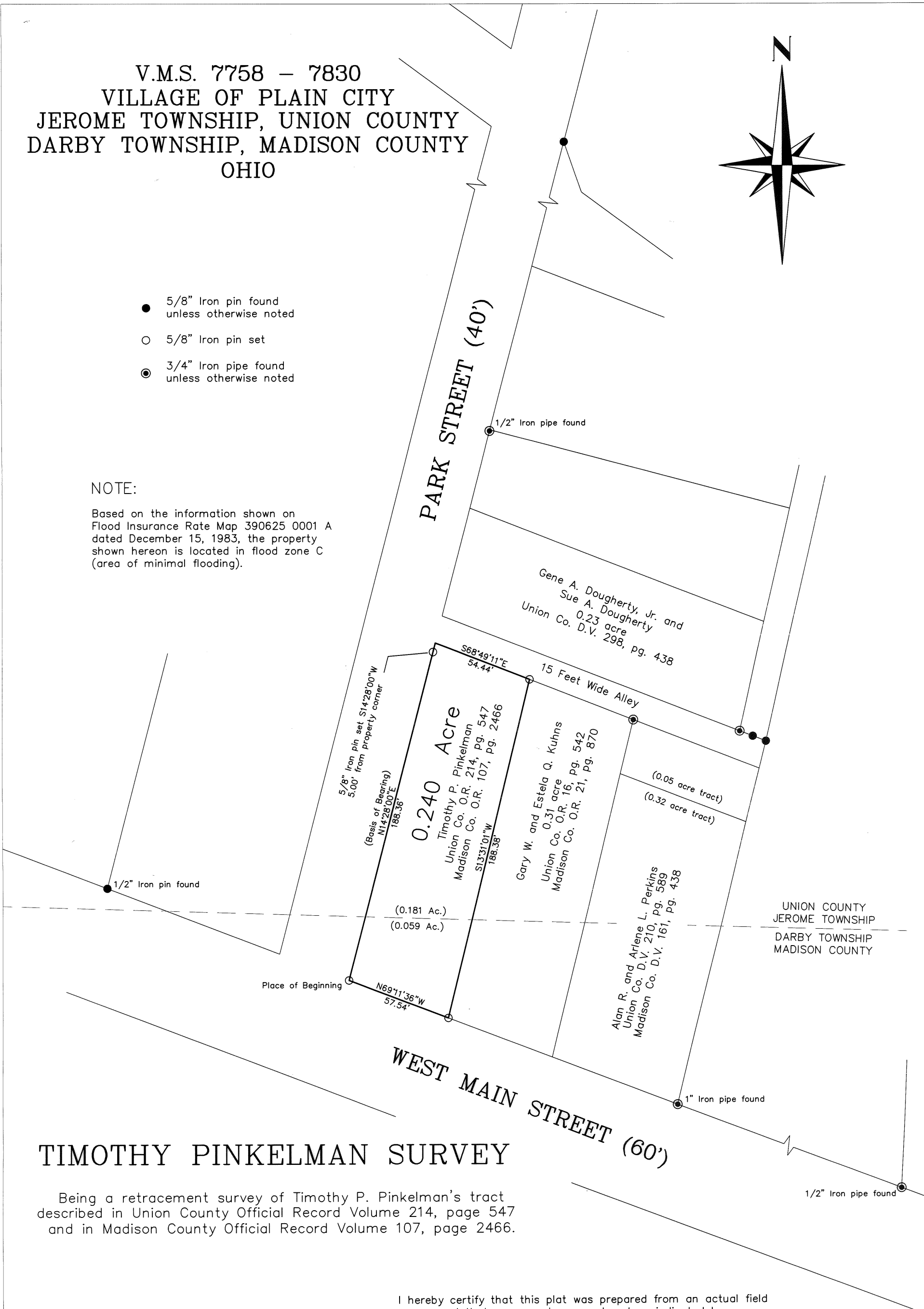
V.M.S. 7758 - 7830  
 VILLAGE OF PLAIN CITY  
 JEROME TOWNSHIP, UNION COUNTY  
 DARBY TOWNSHIP, MADISON COUNTY  
 OHIO



- 5/8" Iron pin found unless otherwise noted
- 5/8" Iron pin set
- ⊙ 3/4" Iron pipe found unless otherwise noted

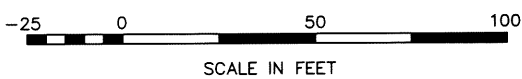
NOTE:

Based on the information shown on Flood Insurance Rate Map 390625 0001 A dated December 15, 1983, the property shown hereon is located in flood zone C (area of minimal flooding).



TIMOTHY PINKELMAN SURVEY

Being a retracement survey of Timothy P. Pinkelman's tract described in Union County Official Record Volume 214, page 547 and in Madison County Official Record Volume 107, page 2466.



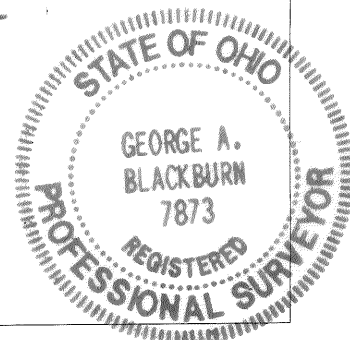
I hereby certify that this plat was prepared from an actual field survey and that monuments were placed as indicated hereon.

*George A. Blackburn* 1-19-05  
 George A. Blackburn, R.S. 7873

BLACKBURN SURVEYING

12125 GREEN STREET  
 MIDDLEBURG, OHIO 43336  
 (937) 666-5605

Filename: Pinkelman 1-05  
 Scale: 1" = 30'  
 Date: 1/19/05  
 F.B. 11, pg. 37



**TIMOTHY PINKELMAN SURVEY**  
**0.240 ACRE**  
**January 19, 2005**

The following described 0.240 acre tract of land is situated in Virginia Military Survey 7758 – 7830, the Village of Plain City, Jerome Township, Union County and Darby Township, Madison County, Ohio and being all of Timothy P. Pinkelman's tract (no acreage given) described in Union County Official Record Volume 214, page 547 and in Madison County Official Record Volume 107, page 2466, said 0.240 acre tract more particularly described as follows:

Beginning at an iron pin set at the intersection of the north line of West Main Street (60 feet wide) with the east line of Park Street (40 feet wide), said iron pin also marking the southwest corner of said Pinkelman's tract;

Thence **North 14°28'00" East 188.36 feet**, departing from the north line of West Main Street, following the east line of Park Street and the west line of said Pinkelman's tract, leaving Darby Township, Madison County and entering Jerome Township, Union County, passing an iron pin set for reference at 183.36 feet, to a point in the south line of a 15 feet wide alley;

Thence **South 68°49'11" East 54.44 feet**, departing from the east line of Park Street, following the south line of said 15 feet wide alley and the north line of said Pinkelman's tract, to an iron pin set at the northwest corner of Gary W. and Estela Q. Kuhns' 0.31 acre tract described in Union County Official Record Volume 16, page 542 and in Madison County Official Record Volume 21, page 870;

Thence **South 13°31'01" West 188.38 feet**, departing from the south line of said 15 feet wide alley, following the west line of said 0.31 acre tract and the east line of said Pinkelman's tract, leaving Jerome Township, Union County and entering Darby Township, Madison County, to an iron pin set in the north line of West Main Street;

Thence **North 69°11'36" West 57.54 feet**, following the north line of West Main Street and the south line of said Pinkelman's tract, to the **place of beginning, containing 0.240 acre**, more or less, and subject to all valid easements and restrictions of record.

Of the above – described 0.240 acre tract of land, 0.181 acre is within Jerome Township, Union County and 0.059 acre is within Darby Township, Madison County.

The above description was prepared from an actual field survey made by George A. Blackburn, Registered Surveyor #7873, during the month of January 2005. Iron pins set are 5/8 inch by 30 inch reinforcing rods with plastic caps marked "Blackburn RS #7873." Bearings indicated herein are based on the east line of Park Street (40 feet wide) bearing North 14°28'00" East.

Description prepared by: George A. Blackburn 1-19-05  
George A. Blackburn, R.S. #7873  
12125 Green Street  
Middleburg, Ohio 43336  
(937) 666-5605

