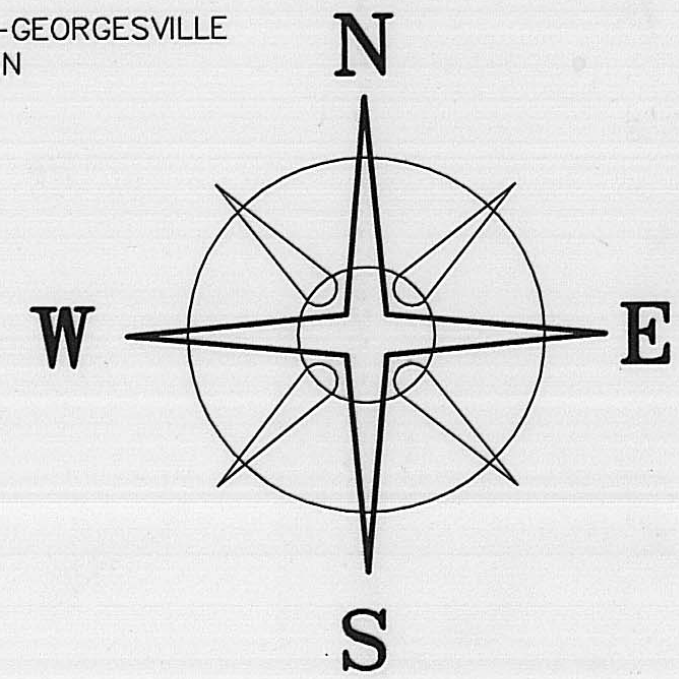


BEARINGS BASED ON THE C OF PLAIN CITY-GEORGESVILLE ROAD (N 27°41'E) AS SHOWN ON PLAT 2A IN TAX MAP ROOM OF 176.14 ACRE TRACT.

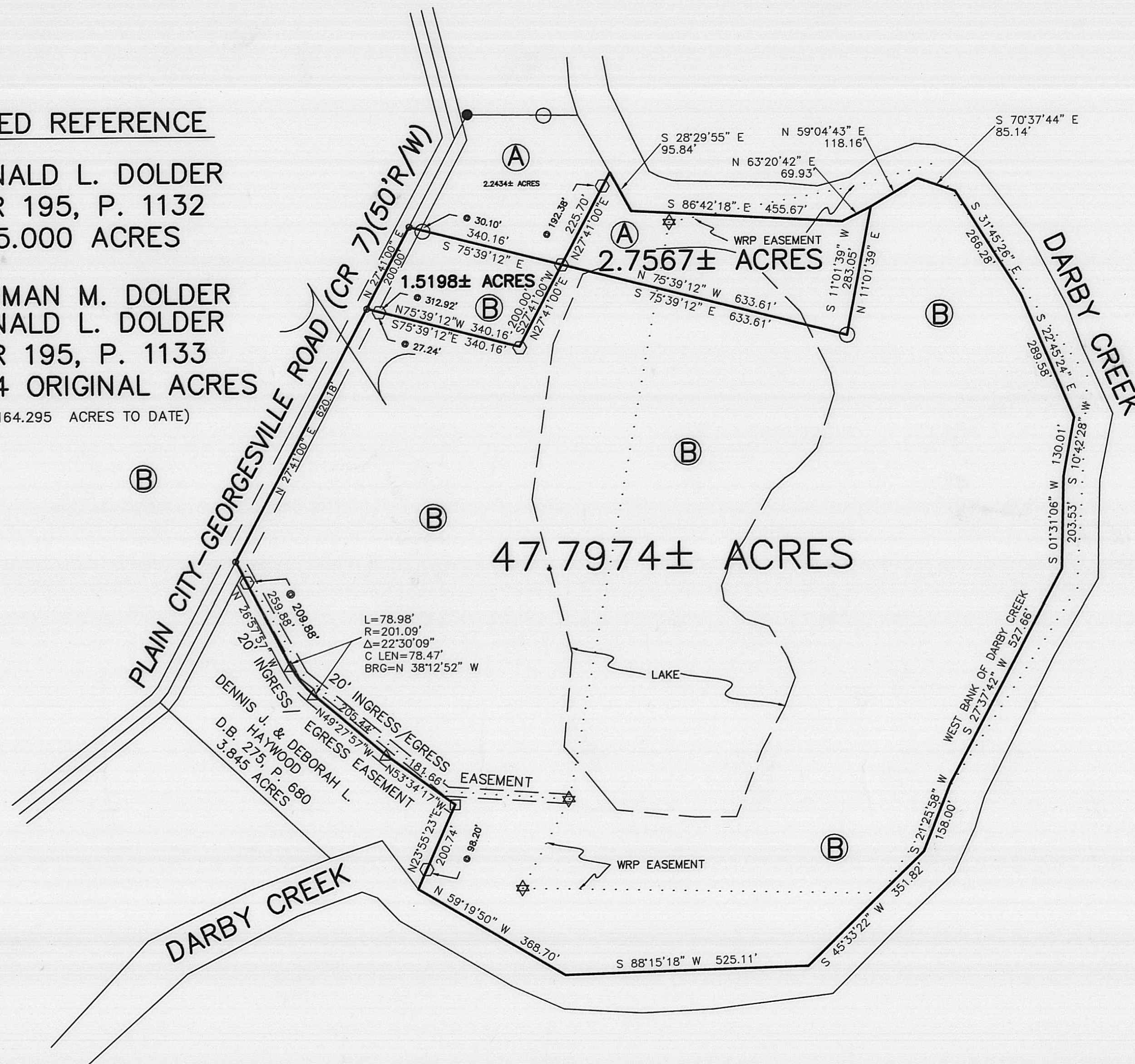


**DEED REFERENCE**

**(A) DONALD L. DOLDER  
OR 195, P. 1132  
5.000 ACRES**

**NORMAN M. DOLDER  
DONALD L. DOLDER  
OR 195, P. 1133**

**(B) 176.14 ORIGINAL ACRES  
(164.295 ACRES TO DATE)**



**LEGEND**

- 3/4" IRON PIPE WITH ALUMINUM CAP STAMPED "5969"
  - ⊕ 3/4" IRON TEE BAR & CAP (FOUND)
  - 5/8" DIA. SOLID IRON PIN (FOUND)
  - ☆ LATHE (SET) ON W.R.P. LINE
  - △ 5/8" REBAR & YELLOW PLASTIC CAP "ELSWICK 6395" (FOUND)
  - RAIL ROAD SPIKE (FOUND)
  - MAG NAIL (SET)
  - ⊙ 5/8" REBAR & YELLOW PLASTIC CAP STAMPED "COTTRILL 6858" (SET)
- ALL MONUMENTS FOUND OR SET ARE IN GOOD CONDITION UNLESS OTHERWISE NOTED.
- TAX MAP PARCEL NUMBER

**74-05**



I HEREBY CERTIFY THAT THIS PLAT DEPICTS AN ACTUAL FIELD SURVEY PERFORMED BY JAMES R. COTTRILL, P.S. #6858

DATE: 5/04/05

**COTTRILL SURVEYING, L.L.C.**

8256 S.R. 207 N.E. MT. STERLING, OHIO 43143 PH. (740) 869-3811

**FARM SPLIT, VMS 9530,  
CANAAN TOWNSHIP,  
MADISON COUNTY, OHIO.  
SURVEYED FOR DEBBIE HAYWOOD**

DATE DRAWN: 5/04/05	SCALE : 1" = 200' 200' 100' 0 200'	CREW: MW, TB
JOB #S050418		DWN. BY: RC
F. B. # 37		CK. BY:

1.5198 Acre Tract  
Surveyed for Debbie Haywood

The following described 1.5198 acre tract is situated in the State of Ohio, Madison County, Canaan Township, VMS 9530, and being part of a 176.14 original acre tract conveyed to Norman M. Dolder and Donald L. Dolder by official record 195 page 1133, and being more particularly described as follows:

Beginning at a mag nail set in the centerline of Plain City-Georgesville Rd. (County Road 7)(50 ft. right-of-way), said mag nail is at the southwest corner of a 5.000 acre tract conveyed to Donald L. Dolder by official record 195 page 1132 ;

Thence, with the south line of said 5.000 acre tract, South 75° 39 minutes 12 seconds East, passing a 3/4 inch iron pipe with aluminum caps stamped "5969" found at 30.10 ft., a total distance of 340.16 ft. to an iron pin and cap set in said line;

Thence, across said original 176.14 acre tract the following 2 new courses:

- 1) South 27° 41 minutes 00 seconds West a distance of 200.00 ft. to iron pin and cap set
- 2) North 75° 39 minutes 12 seconds West, passing an iron pin and cap set at 312.92 ft., a total distance of 340.16 ft. to a mag nail set in the centerline of said Plain City-Georgesville Rd.

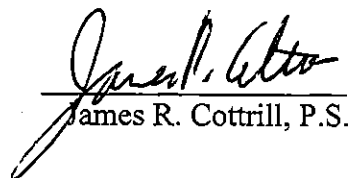
Thence, with the centerline of said Plain City-Georgesville Rd., North 27° 41 minutes 00 seconds East a distance of 200.00 ft. returning to the point beginning containing 1.5198 acres more or less.

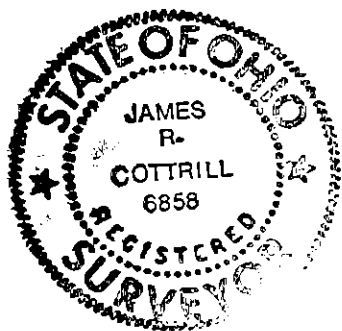
Bearings are based on the centerline of Plain City-Georgesville Rd. (North 27° 41 minutes East) as shown on plat number 2A on file in the tax map of Madison County.

This deed is subject to and with the benefit of all legal highways, restrictions, easements, limitations, and reservations, of record, if any and to zoning restrictions which have been imposed thereon, if any.

All iron pins set are 5/8 inch diameter rebar with yellow plastic caps stamped "Cottrill LLC 6858."

This description is based on a field survey performed May 4, 2005 by James R. Cottrill registration #6858. (Job #S050418A)

  
James R. Cottrill, P.S.



2.7567 Acre Tract  
Surveyed for Debbie Haywood

The following described 2.7567 acre tract is situated in the State of Ohio, Madison County, Canaan Township, VMS 9530, and being part of a 5.000 acre tract conveyed to Donald L. Dolder by official record 195 page 1132, and being more particularly described as follows:

Beginning at a mag nail set in the centerline of Plain City-Georgesville Rd. (County Road 7)(50 ft. right-of-way), said mag nail is at the southwest corner of said 5.000 acre tract, also corner to the remainder of the original 176.14 acre tract conveyed to Norman M. Dolder and Donald L. Dolder for by official record 195 page 1133;

Thence, with the south line of said 5.000 acre tract, South 75° 39 minutes 12 seconds East, passing a 3/4 inch iron pipe with aluminum caps stamped "5969" found at 30.10 ft., a total distance of 340.16 ft. to an iron pin and cap set in said line at **the true point of beginning**;

Thence, with a new line across said 5.000 acre tract, North 27° 41 minutes 00 seconds East , passing an iron pin and cap set at 192.38 ft., a total distance of 225.70 ft. to a point in the north line of said 5.000 acre tract and on the south bank of Darby Creek;

Thence, with the north line of said 5.000 acre tract also being the south bank of Darby Creek the following 3 courses:

- 1) South 28° 29 minutes 55 seconds East a distance of 95.84 ft.
- 2) South 86° 42 minutes 18 seconds East a distance of 455.67 ft.
- 3) North 63° 20 minutes 42 seconds East a distance of 69.93 ft. to the northeast corner of said 5.000 acre tract

Thence, with said 5.000 acre tract the following 2 courses:

- 1) South 11° 01 minutes 39 seconds West a distance of 283.05 ft. to a 3/4 inch iron pipe with aluminum caps stamped " 5969" found
- 2) North 75° 39 minutes 12 seconds West a distance of 633.61 ft. returning to **the true point beginning** containing 2.7567 acres more or less.

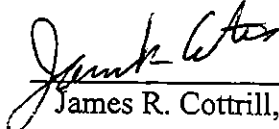
The hereinabove described 2.7567 acre tract is to become part of and contingent to a 47.7974 acre tract surveyed by this surveyor May 4, 2005 and not recorded today.

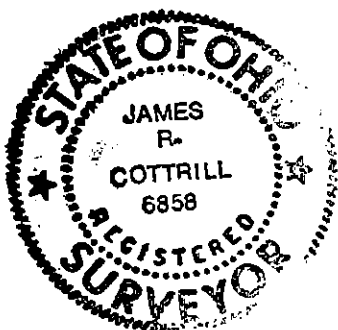
Bearings are based on the centerline of Plain City-Georgesville Rd. (North 27° 41 minutes East) as shown on plat number 2A on file in the tax map of Madison County.

This deed is subject to and with the benefit of all legal highways, restrictions, easements, limitations, and reservations, of record, if any and to zoning restrictions which have been imposed thereon, if any.

All iron pins set are 5/8 inch diameter rebar with yellow plastic caps stamped "Cottrill LLC 6858."

This description is based on a field survey performed May 4, 2005 by James R. Cottrill registration #6858. (Job #S050418B)

  
James R. Cottrill, P.S.



47.7974 Acre Tract  
Surveyed for Debbie Haywood

The following described 47.7974 acre tract is situated in the State of Ohio, Madison County, Canaan Township, VMS 9530, and being part of a 176.14 original acre tract conveyed to Norman M. Dolder and Donald L. Dolder by official record 195 page 1133, and being more particularly described as follows:

Beginning at a mag nail set in the centerline of Plain City-Georgesville Rd. (County Road 7)(50 ft. right-of-way), said mag nail is at the northwest corner of a 3.845 acre tract conveyed to Dennis J. and Deborah L. Haywood by deed book 275 page 680;

Thence, with the centerline of said Plain City-Georgesville Rd. and a new line across said original 176.14 acre tract, North 27° 41 minutes 00 seconds East a distance of 620.18 ft. to a mag nail set in said centerline;

Thence, across said original 176.14 acre tract the following 2 new courses:

- 1) South 75° 39 minutes 12 seconds East, passing an iron pin and cap set at 27.24 ft., a total distance of 340.16 ft. to an iron pin and cap set
- 2) North 27° 41 minutes 00 seconds East a distance of 200.00 ft. to iron pin and cap set in the south line of a 5.000 acre tract conveyed to Donald L. builder by official record 195 page 1132

Thence, with said 5.000 the following two courses:

- 1) South 75° 39 minutes 12 seconds East a distance of 633.61 ft. to a 3/4 inch iron pipe with aluminum caps stamped "5969" found
- 2) North 11° 01 minutes 39 seconds East a distance of 283.05 ft. to the northeast corner of said 5.000 acre tract also in the west bank of Darby Creek

Thence, with the west bank of Darby Creek the following 11 courses:

- 1) North 59° 04 minutes 43 seconds East a distance of 118.16 ft.
- 2) South 70° 37 minutes 44 seconds East a distance of 85.14 ft.
- 3) South 31° 45 minutes 26 seconds East a distance of 266.28 ft.
- 4) South 22° 45 minutes 24 seconds East a distance of 289.58 ft.
- 5) South 10° 42 minutes 28 seconds West a distance of 130.01 ft.
- 6) South 01° 31 minutes 06 seconds West a distance of 203.53 ft.
- 7) South 27° 37 minutes 42 seconds West a distance of 527 .66 ft.
- 8) South 21° 25 minutes 58 seconds West a distance of 158.00 ft.
- 9) South 45° 33 minutes 22 seconds West a distance of 351.82 ft.
- 10) South 88° 15 minutes 18 seconds West a distance of 525.11 ft.
- 11) North 59° 19 minutes 50 seconds West a distance of 368.70 ft. to the southeast corner of said Haywood's 3.845 acre tract

Thence, with said 3.845 acre tract the following 5 courses:

- 1) North 23° 55 minutes 23 seconds East, passing an iron pin and cap set at 48.32 ft., a total distance of 200.74 ft. to a 5/8 inch diameter rebar found
- 2) North 53° 34 minutes 17 seconds West a distance of 181.66 ft. to a 5/8 inch diameter rebar and yellow plastic caps stamped " Elswick 6395" found
- 3) North 49° 27 minutes 57 seconds West a distance of 205.44 ft. to a 5/8 inch Rebar and yellow plastic caps stamped " Elswick 6395" found
- 4) with a curve to the right, radius equals 201.09 ft., arc length 78.98 ft., chord bears North 38° 12 minutes 52 seconds West a distance of 78.47 ft. to a 5/8 inch diameter rebar and yellow plastic caps stamped " Elswick 6395" found
- 5) North 26° 57 minutes 57 seconds West, passing an iron pin and cap set at 209.88 ft., a total distance of 259.88 ft. returning to the point beginning containing 47.7974 acres more or less.

Bearings are based on the centerline of Plain City-Georgesville Rd. (North 27° 41 minutes East) as shown on plat number 2A on file in the tax map of Madison County.

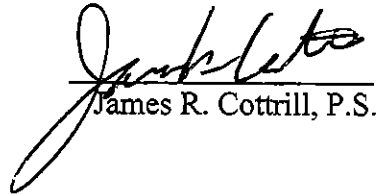
With the benefit of a 20 ft. ingress egress easement taintd two and 20 ft. south of the north line of Haywood's 3.845 acre tract as shown on plat accompanying this legal description.

Subject to a WRP easement and 20 ft. ingress egress easement to said WRP easement as shown on plat accompanying this legal description.

This deed is subject to and with the benefit of all legal highways, restrictions, easements, limitations, and reservations, of record, if any and to zoning restrictions which have been imposed thereon, if any.

All iron pins set are 5/8 inch diameter rebar with yellow plastic caps stamped "Cottrill LLC 6858."

This description is based on a field survey performed May 4, 2005 by James R. Cottrill registration #6858. (Job #S050418)

  
James R. Cottrill, P.S.

