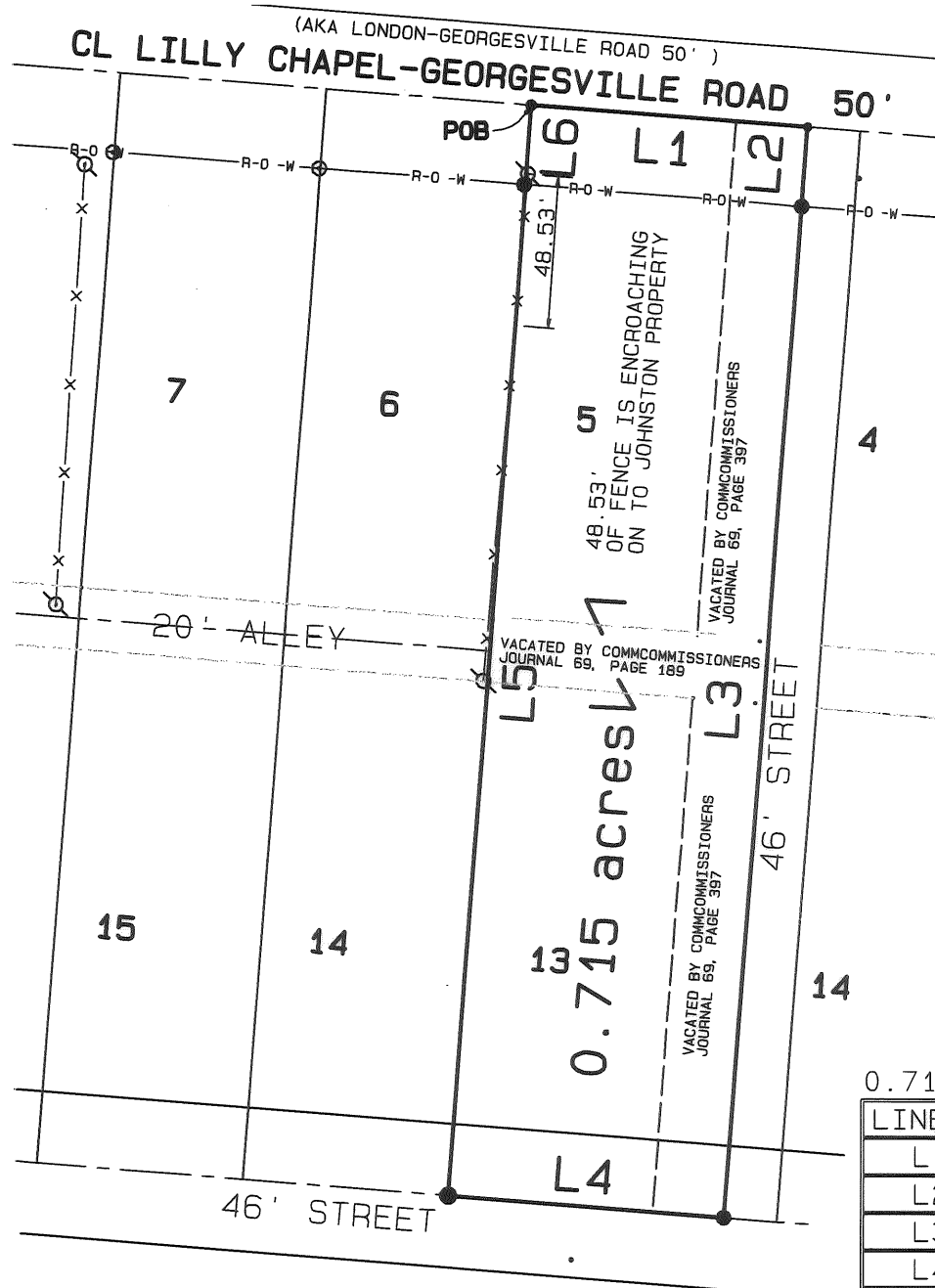


COMBINING TWO LOTS AND VACATION ORDER

SHEET 2 OF 2

SITUATED IN THE STATE OF OHIO, COUNTY OF MADISON, TOWNSHIP OF FAIRFIELD, AND VILLAGE OF LILLY CHAPEL (AKA GILROY) AND BEING ALL OF LOTS 5 AND 13, INCLUDING THE 20' ALLEY BETWEEN LOT 5 AND 13, AN THE WESTERLY 23' OFF A 46' STREET BETWEEN LOTS 5-4 AND LOTS 13-14, AS NUMBERED AND DELINEATED UPON PLAT OF GILROY, GIERICH'S ADDITION, PLAT CAB. 1, SLIDE 110-111 AND DECLARED IN THE VACATION ORDER OF 69-189, AND 69-397 OF THE MADISON COUNTY COMMISSIONERS OFFICE, AND MORE PARTICULARLY DESCRIBED AS FOLLOWS:



SURVEYORS NOTES:

- 1. LINES OF OCCUPATION, WHERE EXISTING, AGREE IN GENERAL WITH THE PROPERTY LINES
- 2. SOURCE OF DATA FOR THIS SURVEY:
 - (1) MADISON COUNTY TAX MAP
 - (2) MADISON COUNTY RECORDERS OFFICE: GILROY GIERICH'S ADDITION PLAT CABINET 1, SLIDE 110-111
 - (3) INSTRUMENTS EFFECTING COUNTY COMMISSIONERS JOURNAL, ENTRIES 69-189 69-397, AND INST NO. 200500005967
 - (4) BASIS OF BEARING : CL OF LILLY CHAPEL-GEORGESVILLE ROAD, BEING: S 85° 30' 00" E
 - (5) ENCROACHMENTS: AS NOTED ON THE WEST LINE OF LOT 5.

0.715ACRE TRACT

LINE	BEARING	DISTANCE
L1	S85°30'00"E	89.00'
L2	S04°30'00"W	25.43'
L3	S04°30'00"W	324.57'
L4	N85°30'00"W	89.00'
L5	N04°30'00"E	324.57'
L6	N04°30'00"E	25.43'

SCALE 1" = 60'
LEGEND

- PK W SHINER
- ⊙ IRON PIN (FOUND)
- IRON PIN SET W/CAP P.S.-7616
- ⊗ EXISTING FENCE POST
- X— EXISTING FENCE
- VACATED ALLEY



I CERTIFY THAT THE SURVEY DEPICTED ON THIS PLAT IS A FIELD SURVEY CONDUCTED BY ME AND/OR UNDER MY DIRECT SUPERVISION, ON THIS

26th DAY OF January 2006



J. Conkle
22-06

EXHIBIT "A"

Situated in the State of Ohio, County of Madison, Township of Fairfield, and Village Of Lilly Chapel (aka Gilroy) and being all of Lots 5 and 13 , including the 20' alley between Lot 5 and 13 , and the westerly 23' off a 46' street between lots 5-4 and lots 13-14, As numbered and delineated upon plat of Gilroy, Gierich's Addition , Plat Cab. 1, Slide 110-111 and declared in the vacation order of 69-189, and 69-397 of the Madison County Commissioners Office, and more particularly Described as follows:

Commencing at "THE TRUE POINT OF BEGINNING"; being the north west corner of Lot Number 5, of Gilroy, Gierich's Addition, Plat Cab. 1, Slide 110-111 also being the centerline of Lilly-Chapel-Georgesville Road 50';

(L1) thence with the centerline of said road, South 85°30'00" East, passing the original corner at 66.00' and continuing as per County Commissioners vacation order of 69-397 a total distance of 89.00' to a pk w/shiner set in the Centerline intersection of a 46' unimproved street and said Lilly Chapel-Georgesville Road;

(L2) thence with the centerline of a vacated unimproved street as per County Commissioners vacation order of 69-397, South 04°30'00" West, a distance of 25.43' to the southerly right of way line of said Lilly Chapel-Georgesville Road and an iron pin set;

(L3) thence continuing with said centerline South 04°30'00" West, a distance of 324.57' to the centerline of a 46' unimproved street, vacated as per County Commissioners vacation order of 69-397 and an iron pin set;

(L4) thence with said centerline, North 85°30'00" West, passing the original southeasterly corner of lot 13 of said subdivision at 23.00' for a total distance of 89.00' to an iron pin set on the southwesterly corner of lot 13 of said subdivision;

(L5) thence with the westerly line of said Lot 13, North 04°30'00" East, passing the northwesterly corner of said lot 13 at 165.00' and crossing the alley vacated by County Commissioners vacation order of 69-189 a distance of 20.00' to the southwesterly corner of Lot 5 of said subdivision, and continuing up the westerly line of said Lot 5 a total distance of 324.57' to the southerly right of way of said Lilly Chapel-Georgesville Road and an iron pin set;

(L6) thence continuing with said westerly line, North 04°30'00" East, a distance of 25.43' to the northwesterly corner of lot 5 and "THE TRUE POINT OF BEGINNING;" Containing 0.715 Acres, more or less.

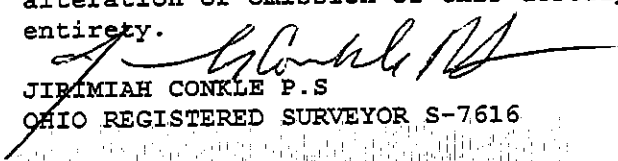
Basis of Bearing: The Center Line of Lilly Chapel - Georgesville Road, and being S 85°30'00" E

Iron pin set are 30" in length and 5/8th rebar with an Orange cap "CSC-PS-7616".

This description is the result of and actual field survey performed by G-MAPS,inc dba CONKLE SURVEYING CONSULTANTS, on this 28th day of January, 2006.

Grantor claims title by instrument of record 200500005967 of the Madison County Records Office.

Original electronic files are maintained by Jiremiah Conkle P.S., any alteration or omission of this description voids the survey in its entirety.


JIRIMIAH CONKLE P.S.
OHIO REGISTERED SURVEYOR S-7616

