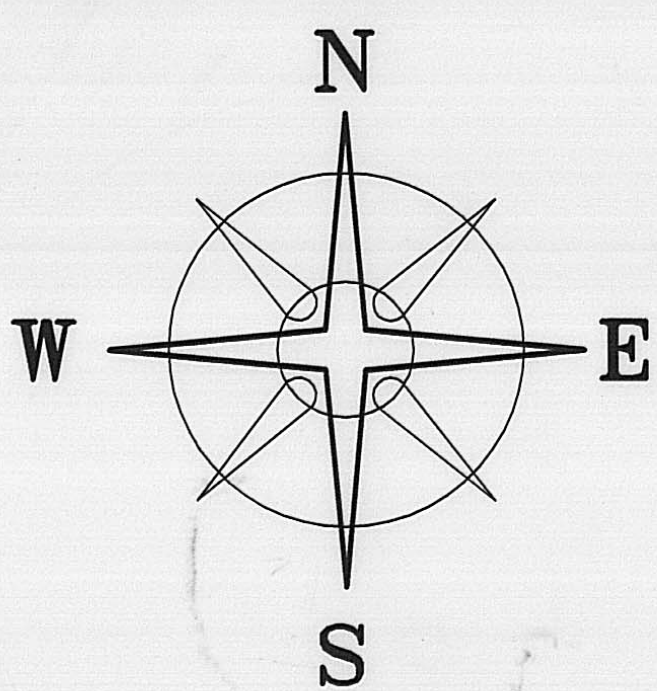
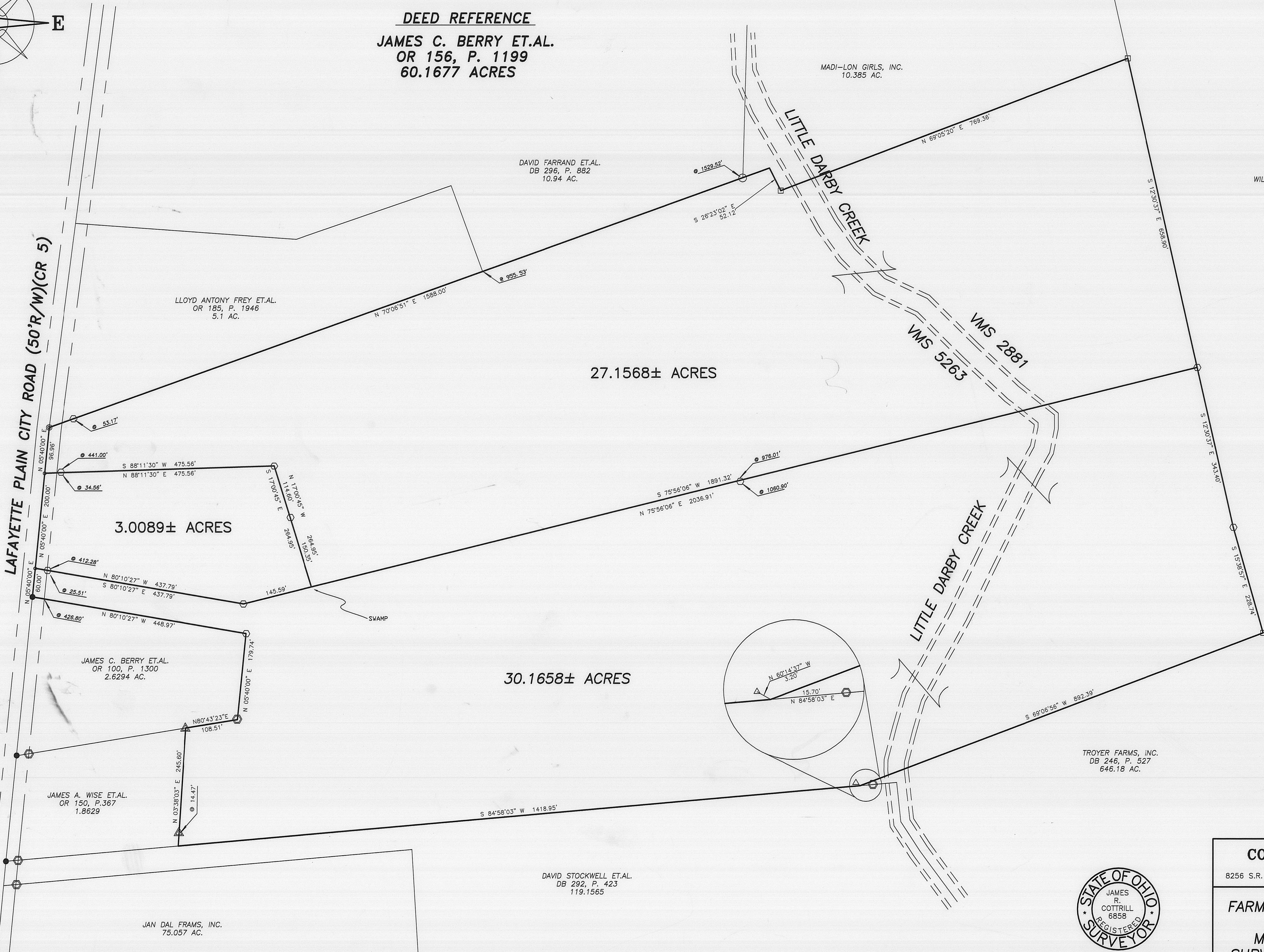


BEARINGS BASED ON THE  $\angle$  OF LAFAYETTE-PLAIN CITY ROAD  
(N 05°40'E) AS DESCRIBED IN OR 156, P.1199.



**DEED REFERENCE**  
**JAMES C. BERRY ET.AL.**  
**OR 156, P. 1199**  
**60.1677 ACRES**

**LAFAYETTE PLAIN CITY ROAD (50'R/W)(CR 5)**



DAVID FARRAND ET.AL.  
 DB 296, P. 882  
 10.94 AC.

MADI-LON GIRLS, INC.  
 10.385 AC.

WILMA YODER, TRUSTEE ET.AL.  
 OR 113, P. 2070  
 102.989 AC.

LLOYD ANTONY FREY ET.AL.  
 OR 185, P. 1946  
 5.1 AC.

3.0089± ACRES

27.1568± ACRES

30.1658± ACRES

JAMES C. BERRY ET.AL.  
 OR 100, P. 1300  
 2.6294 AC.

JAMES A. WISE ET.AL.  
 OR 150, P.367  
 1.8629

TROYER FARMS, INC.  
 DB 246, P. 527  
 646.18 AC.

DAVID STOCKWELL ET.AL.  
 DB 292, P. 423  
 119.1565

JAN DAL FRAMS, INC.  
 75.057 AC.

**LEGEND**

- 3/4" IRON PIPE (FOUND)
  - 3/4" DIA. SOLID IRON PIN (FOUND)
  - △ RECORD CORNER STONE (FOUND)
  - RAIL ROAD SPIKE (FOUND)
  - MAG NAIL (SET)
  - ⊙ MAG NAIL (FOUND) OVER TOP IRON PIN
  - △ 3/4" ø ELEC. CONDUIT IRON & YELLOW PLASTIC CAP STAMPED "BAKER S5539" (FOUND)
  - 5/8" ø REBAR & YELLOW PLASTIC CAP STAMPED "COTTRILL 6858" (SET)
  - ⊙ 5/8" ø REBAR & YELLOW PLASTIC CAP STAMPED "COTTRILL 6858" (SET) (PREVIOUSLY SET)
- ALL MONUMENTS FOUND OR SET ARE IN GOOD CONDITION UNLESS OTHERWISE NOTED.



I HEREBY CERTIFY THAT THIS PLAT DEPICTS AN ACTUAL FIELD SURVEY PERFORMED BY JAMES R. COTTRILL P.S. #6858  
 DATE: 5/9/06

78.06

**COTTRILL SURVEYING, L.L.C.**

8256 S.R. 207 NE MT. STERLING, OHIO 43143 PH. (740) 869-3811

PLAT OF  
**FARM SPLIT, VMS 5263 & 2881,**  
**MONROE TOWNSHIP,**  
**MADISON COUNTY, OHIO.**  
**SURVEYED FOR DEBBIE BARTON.**

DATE DRAWN:  
 5/05/06  
 JOB# S060404  
 F.B. # 39

SCALE: 1"= 100'  
 100' 50' 0' 100'

CREW: MW  
 DWN. BY: RC  
 CK. BY:

3.0089 Acre Tract  
Surveyed for Debbie Barton

The following described 3.0089 acre tract is situated in the State of Ohio, Madison County, Monroe Township, VMS 5263, and being part of a 60.1677 acre tract conveyed to James C. Berry Et. Al. By official record 156 page 1199, and being more particularly described as follows:

Beginning at a railroad spike found in the centerline of Lafayette-Plain City Road at the northwest corner of a 2.6294 acre tract conveyed to James C. Berry Et Al by official record 100 page 1300;

Thence, with the centerline of said Lafayette-Plain City Road, North 05° 40 minutes 00 seconds East a distance of 60.00 ft. to a mag nail set in said centerline at **the true point of beginning**;

Thence, continuing with the centerline of said Lafayette-Plain City Road, North 05° 40 minutes 00 seconds East a distance of 200.00 ft. to a mag nail set in said centerline;

Thence, with the following 4 new courses across said 60.1677 acre tract:

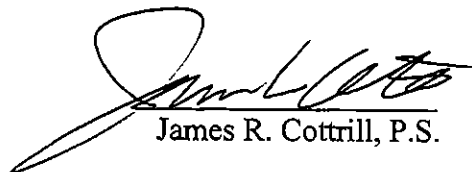
- 1) North 88° 11 minutes 30 seconds East, passing an iron pin and cap set at 34.56 ft., a total distance of 475.56 ft. to an iron pin and cap set
- 2) South 17° 00 minutes 45 seconds East, passing an iron pin and cap set at 114.60 ft., a total distance of 264.95 ft.
- 3) South 75° 56 minutes 06 seconds West a distance of 145.59 ft. to an iron pin and cap set
- 4) North 80° 10 minutes 27 seconds West, passing an iron pin and cap set at 412.28 feet, a total distance of 437.79 ft. returning to **the true point beginning** containing 3.0089 acres more or less.

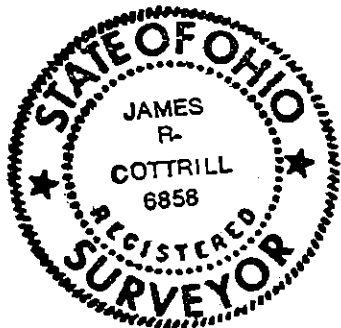
Bearings are based on the centerline of Lafayette-Plain City Road (North 05° 40 minutes East) as described in official record 156 page 1199.

This deed is subject to and with the benefit of all legal highways, restrictions, easements, limitations, and reservations, of record, if any and to zoning restrictions which have been imposed thereon, if any.

All iron pins set are 5/8 inch diameter rebar with yellow plastic caps stamped "Cottrill L.L.C. 6858."

This description is based on a field survey performed May 8, 2006 by James R. Cottrill registration #6858. (Job #S060404)

  
James R. Cottrill, P.S.



27.1568 Acre Tract  
Surveyed for Debbie Barton

The following described 27.1568 acre tract is situated in the State of Ohio, Madison County, Monroe Township, VMS 5263 and 2881 , and being part of a 60.1677 acre tract conveyed to James C. Berry Et. Al. By official record 156 page 1199, and being more particularly described as follows:

Beginning at a mag nail found over an iron pin in the centerline of Lafayette-Plain City Road at the southwest corner of a 5.1 acre tract conveyed to Lloyd Antony Frey et al by official record 185 page 1946;

Thence, with the north line of said 60.1677 acre tract, North 70° 06 minutes 51 seconds East, passing an iron pin and cap set at 53.17 ft., also passing the southwest corner of a 10.94 acre tract conveyed to David Farrand et al by deed book 296 page 882 at 955.53 ft., also passing a ¾" diameter iron pipe found at the southwest corner of a 10.385 acre tract conveyed to Madi-Lon Girls, Inc. at 1529.52 ft. total distance of 1588.00 ft.;

Thence, with said 10.385 acre tract the following 2 courses:

- 1) South 26° 23 minutes 02 seconds East a distance of 52.12 ft. to a ¾" diameter solid iron pin found
- 2) North 69° 05 minutes 20 seconds East a distance of 769.36 ft. to a ¾" diameter solid iron pin found in the west line of a 102.989 acre tract conveyed to Wilma Yoder, trustee et al by official record 113 page 2070

Thence, with the west line of said 102.989 acre tract, South 12° 30 minutes 37 seconds East a distance a 658.90 ft. to an iron pin and cap set

Thence, with the following 3 new courses across said 60.1677 acre tract:

- 1) South 75° 56 minutes 06 seconds West, passing an iron pin and cap set at 976.01 ft., a total distance of 1891.32 ft. to a point in a swamp
- 2) North 17° 00 minutes 45 seconds West, passing an iron pin and cap set at 150.35 ft., a total distance of 264.95 ft. to an iron pin and cap set
- 3) South 88° 11 minutes 30 seconds West, passing an iron pin and cap set at 441.00 ft., a total distance of 475.56 ft. to a mag nail set in the centerline of said Lafayette-Plain City Road

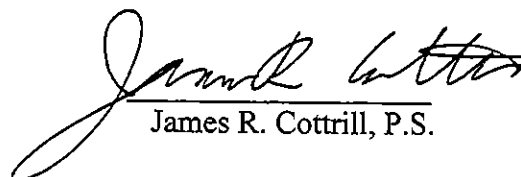
Thence, with the centerline of said Lafayette-Plain City Road, North 05° 40 minutes 00 seconds East a distance of 96.96 ft. returning to the point beginning containing 27.1568 acres more or less.

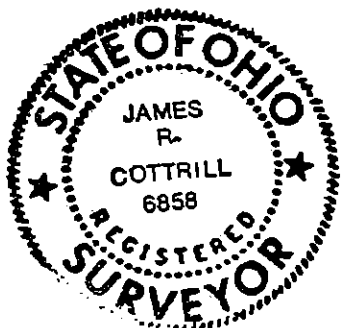
Bearings are based on the centerline of Lafayette-Plain City Road (North 05° 40 minutes East) as described in official record 156 page 1199.

This deed is subject to and with the benefit of all legal highways, restrictions, easements, limitations, and reservations, of record, if any and to zoning restrictions which have been imposed thereon, if any.

All iron pins set are 5/8 inch diameter rebar with yellow plastic caps stamped "Cottrill L.L.C. 6858."

This description is based on a field survey performed May 8, 2006 by James R. Cottrill registration #6858. (Job #S060404B)

  
James R. Cottrill, P.S.



30.1658 Acre Tract  
Surveyed for Debbie Barton

The following described 30.1658 acre tract is situated in the State of Ohio, Madison County, Monroe Township, VMS 5263 and 2881, and being part of a 60.1677 acre tract conveyed to James C. Berry Et. Al. By official record 156 page 1199, and being more particularly described as follows:

Beginning at a railroad spike found in the centerline of Lafayette-Plain City Road at the northwest corner of a 2.6294 acre tract conveyed to James C. Berry Et Al by official record 100 page 1300;

Thence, with the centerline of said Lafayette-Plain City Road, North 05° 40 minutes 00 seconds East a distance of 60.00 ft. to a mag nail set in said centerline;

Thence, with the following 2 new courses across said 60.1677 acre tract:

- 1) South 80° 10 minutes 27 seconds East, passing an iron pin and cap set at 25.51 ft., a total distance of 437.79 ft. to an iron pin and cap set
- 2) North 75° 56 minutes 06 seconds East, passing an iron pin and cap set at 1060.90 ft., a total distance of 2036.91 ft. to an iron pin and cap set in the west line of a 102.989 acre tract conveyed to Wilma Yoder, trustee Et Al by official record 113 page 2070

Thence, with the west line of said 102.99 acre tract the following 2 courses:

- 1) South 12° 30 minutes 37 seconds East a distance of 343.40 ft. to an iron pin and cap set
- 2) South 15° 38 minutes 57 seconds East a distance of 228.74 ft. to a ¾" diameter solid iron pin found in the north line of a 646.18 acre tract conveyed to Troyer Farms Inc. by deed book 246 page 527

Thence, with the north line of said 646.18 acre tract, South 69° 06 minutes 56 seconds West a distance of 892.39 ft. to a point in the north line of a 119.1565 acre tract conveyed to David Stockwell et al. by deed book 292 page 423, from said point in iron pin and cap previously set bears North 84° 58 minutes 03 seconds East a distance of 15.70 ft., also a stone bears North 60° 14 minutes 37 seconds West a distance of 3.20 ft.;

Thence, with the north line of said 119.1565 acre tract, South 84° 58 minutes 03 seconds West a distance of 1418.95 ft. to the southeast corner of a 1.8629 acre tract conveyed to James J. Wise et al. by official record 150 page 367;

Thence, with the east line of said 1.8629 acre tract, North 03° 38 minutes 03 seconds East passing a 3/4" diameter electrical conduit and yellow plastic caps stamped "Baker S5539" found at 14.47 ft., a total distance of 245.60 ft. to another ¾" diameter electrical conduit and yellow plastic caps stamped "Baker S5539" found in the south line of said Berry's 2.6294 acre tract;

Thence with said 2.6294 acre tract the following 3 courses:

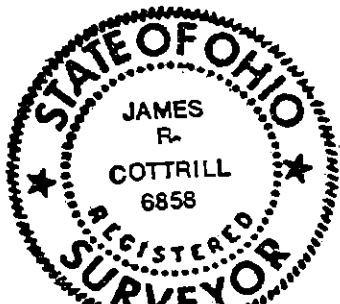
- 1) North 80° 43 minutes 23 seconds East a distance of 108.51 ft. to an iron pin and cap previously set
- 2) North 05° 40 minutes 00 seconds East a distance of 179.74 ft. to an iron pin and cap set
- 3) North 80° 10 minutes 27 seconds West, passing an iron pin and cap previously set at 426.80 ft., a total distance of 448.97 ft. returning to the point beginning containing 30.1658 acres more or less.


Bearings are based on the centerline of Lafayette-Plain City Road (North 05° 40 minutes East) as described in official record 156 page 1199.

This deed is subject to and with the benefit of all legal highways, restrictions, easements, limitations, and reservations, of record, if any and to zoning restrictions which have been imposed thereon, if any.

All iron pins set are 5/8 inch diameter rebar with yellow plastic caps stamped "Cottrill L.L.C. 6858."

This description is based on a field survey performed May 8, 2006 by James R. Cottrill registration #6858. (Job #S060404A)



  
James R. Cottrill, P.S.