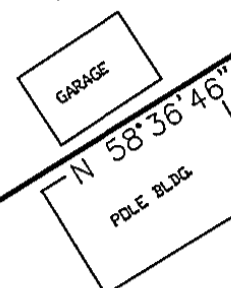


BEARINGS ARE BASED ON THE WEST LINE OF OLIVE STREET (S 32°00'00"E) AS DESCRIBED IN D.B. 292 PG. 862.

JAMES W. & NORMA J. HUFF
D.B. 204 PG. 419
4.056 ACRES

STEVE MENDA
DR 43 P 397
0.2046 ACRES



0.7196±

0.3800± ACRES
0.3396± ACRES

ACRES

0.6407± ACRES

NOTE

0.6407± ACRE TRACT IS TO BECOME PART OF AND CONTINGENT TO GEO-SITES' 2.0354 ACRE TRACT.

MAD.CO. COMM. C.H.
OR 20 P 931
6.5183 ACRES

GEO-SITES LTD
OR 213 P 107
2.0354 ACRES

DEED REFERENCE

GEO-SITES LTD
OR 213 P 107

- (A) 0.3396 ACRES
- (B) 1.0207 ACRES

LEGEND

5/8" Ø REBAR & YELLOW PLASTIC
CAP STAMPED "COTTRILL 6858" (PREVIOUSLY SET)

ALL MONUMENTS FOUND OR SET ARE IN GOOD
CONDITION UNLESS OTHERWISE NOTED.



I HEREBY CERTIFY THAT THIS PLAT DEPICTS
AN ACTUAL FIELD SURVEY PERFORMED BY
JAMES R. COTTRILL P.S. #6858

DATE: _____

JAMES R. COTTRILL P.S.

8256 S.R. 207 N.E. MT. STERLING, OHIO 43143 PH. (614) 869-3811

0.7196± ACRES, VMS 8742,
CITY OF LONDON,
MADISON COUNTY, OHIO.
SURVEYED FOR GREG HUFF

DATE DRAWN:
12/21/06
JOB # S061214
F. B. # FILE

SCALE: 1" = 40'
40' 20' 0 40'

1-01

0.7196 Acre Tract
Surveyed for Greg Huff

The following described 0.7196 acre tract is situated in the State of Ohio, Madison County, city of London, VMS 8742, and being all of a 0.3396 acre tract and part of a 1.0207 acre tract both tracts conveyed to GE0-Sites Ltd. by official record 213 page 107, and being more particularly described as follows:

Beginning at an iron pin and cap previously set in the southwest line of Olive Street (50 ft. wide) said iron pin and cap is at the north east corner of said 1.0207 acre tract and at the southeast corner of a 0.2046 acre tract conveyed to Steve Menda by official record 43 page 397;

Thence, with the southwest line of said Olive Street, South 32° 00 minutes 00 seconds East, passing an iron pin and cap previously set at the north east corner of said 0.3396 acre tract at 61.10 ft., a total distance of 126.10 ft. to an iron pin and cap previously set at the northeast corner of a 2.0354 acre tract also conveyed to GE0-Sites Ltd. by official record 213 page 107;

Thence, with said 2.0354 acre tract the following 2 courses:

- 1) South 58° 00 minutes 00 seconds West a distance of 214.86 ft. to an iron pin and cap previously set
- 2) North 32° 00 minutes 00 seconds West a distance of 72.68 ft. to an iron pin and cap previously set in the south line of said 1.0207 acre

Thence, with the new line across said 1.0207 acre tract, North 32° 02 minutes 09 seconds West a distance of 110.92 ft. to iron pin and cap previously set in the southeast line of a 4.056 acre tract conveyed to James W. and Norma J. Huff by deed book 204 page 419;

Thence, with said southeast line, North 56° 00 minutes 00 seconds East a distance of 70.52 ft. to an iron pin and cap previously set at the north west corner of said Menda's 0.2046 acre tract;

Thence, with said 0.2046 acre tract the following 2 courses:

- 1) South 32° 00 minutes 00 seconds East a distance of 58.42 ft. to an iron pin and cap previously set
- 2) North 58° 36 minutes 46 seconds East a distance of 144.46 ft. returning to the point beginning containing 0.7196 acres more or less, of which 0.3396 acre more or less is all of said 0.3396 acre tract and 0.3800 acres more or less is part of said 1.0207 acre tract.

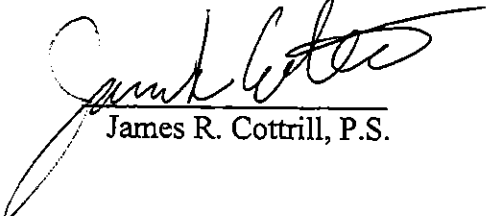
Bearings are based on the southwest line of Olive Street (South 32° 00 minutes 00 seconds East) as described in deed book 292 page 862.

This deed is subject to and with the benefit of all legal highways, restrictions, easements, limitations, and reservations, of record, if any and to zoning restrictions which have been imposed thereon, if any.

All iron pins set are 5/8 inch diameter rebar with yellow plastic caps stamped "Cottrill L.L.C. 6858."

This description is based on a field survey performed December 28, 2006 by James R. Cottrill registration #6858. (Job #S061214)




James R. Cottrill, P.S.

0.6407 Acre Tract
Surveyed for Greg Huff

The following described 0.6407 acre tract is situated in the State of Ohio, Madison County, city of London, VMS 8742, and being part of a 1.0207 acre tract conveyed to GEO-Sites Ltd. by official record 213 page 107, and being more particularly described as follows:

Commencing at an iron pin and cap previously set in the southwest line of Olive Street (50 ft. wide) said iron pin and cap is at the south east corner of said 1.0207 acre tract and at the north east corner of a 0.3396 acre tract conveyed to Geo-Sites Ltd. by official record 213 page 107;

Thence, with the line between said 0.3396 and said 1.0207 acre tracts, South 60° 02 minutes 52 seconds West a distance of 215.00 ft. to an iron pin and cap previously set at a corner of a 2.0354 at the track also conveyed to GEO-Sites by Official Record 213 Page 107 and **The True Point of Beginning**;

Thence, with the northwest line of said 2.0354 acre tract, South 60° 02 minutes 52 seconds West a distance of 242.32 ft. to an iron pin and cap previously set at the northeast corner of a 6.5183 acre tract conveyed to Madison County Commissioners Courthouse by official record 20 page 931;

Thence, with the north line of said 6.5183 acre tract North 68° 18 minutes 31 seconds West a distance of 113.30 ft. to an iron pin and cap previously set at the southernmost corner of a 4.056 acre tract conveyed to James W. and Norma J. Huff by deed book 204 page 419;

Thence, with the south line of said 4.056 acre tract, North 55° 58 minutes 12 seconds East a distance of 309.38 ft. to an iron pin and cap previously set;

Thence, with a new line across said 1.0207 acre tract, South 32° 02 minutes 09 seconds East a distance of 110.92 ft. returning to **The True Point Beginning** containing **0.6407 Acres** more or less.

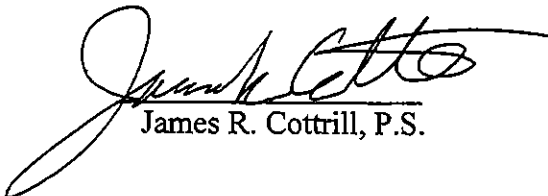
Bearings are based on the southwest line of Olive Street (South 32° 00 minutes 00 seconds East) as described in deed book 292 page 862.

This deed is subject to and with the benefit of all legal highways, restrictions, easements, limitations, and reservations, of record, if any and to zoning restrictions which have been imposed thereon, if any.

All iron pins set are 5/8 inch diameter rebar with yellow plastic caps stamped "Cottrill L.L.C. 6858."

This description is based on a field survey performed December 28, 2006 by James R. Cottrill registration #6858. (Job #S061214A)




James R. Cottrill, P.S.