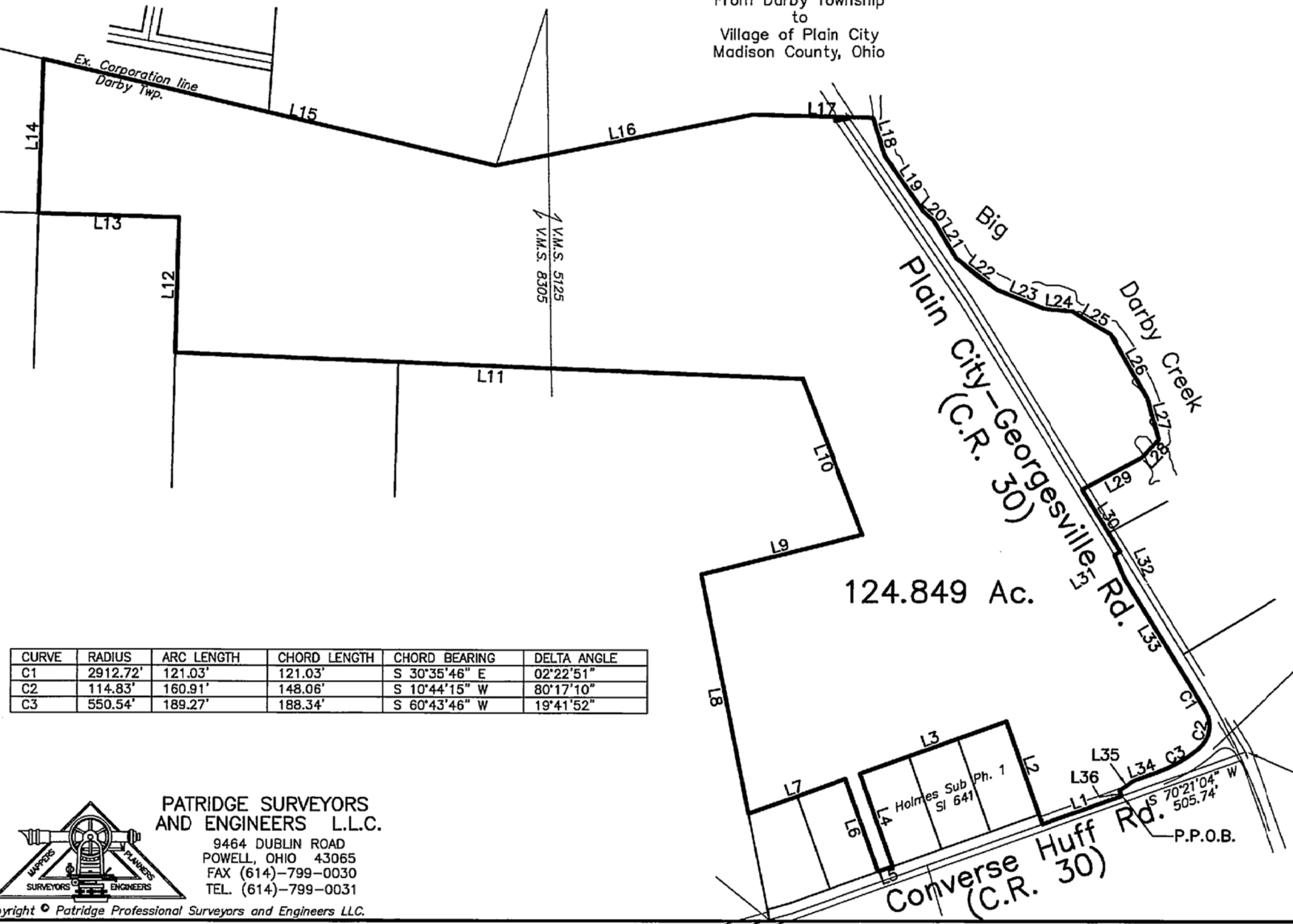


ANNEXATION PLAT

From Darby Township
to
Village of Plain City
Madison County, Ohio

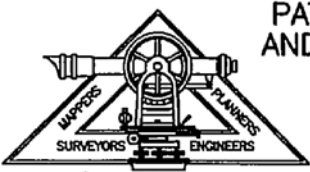


Scale 1" = 500'
January 12, 2007
revised 3/27/07



LINE	BEARING	DISTANCE
L1	S 70°21'04" W	325.17'
L2	N 19°38'54" W	420.00'
L3	S 70°21'06" W	600.00'
L4	S 19°38'54" E	380.00'
L5	S 70°21'06" W	60.00'
L6	N 19°38'54" W	380.00'
L7	S 70°21'06" W	399.48'
L8	N 11°21'40" W	939.60'
L9	N 76°06'18" E	641.38'
L10	N 21°16'50" W	643.95'
L11	N 87°43'06" W	2432.98'
L12	N 01°24'46" E	520.93'
L13	N 88°27'26" W	542.20'
L14	N 01°37'26" E	595.10'
L15	S 76°56'12" E	1798.20'
L16	N 78°43'01" E	1013.94'
L17	S 88°32'43" E	468.03'
L18	S 17°05'24" E	153.84'
L19	S 34°51'37" E	258.60'
L20	S 48°22'38" E	55.01'
L21	S 31°09'47" E	170.68'
L22	S 52°43'16" E	198.21'
L23	S 68°14'04" E	196.74'
L24	S 84°32'05" E	112.97'
L25	S 59°04'31" E	170.43'
L26	S 30°09'44" E	284.46'
L27	S 15°45'28" E	165.62'
L28	S 43°12'14" W	94.06'
L29	S 61°38'44" W	262.30'
L30	S 31°47'11" E	281.07'
L31	S 58°12'49" W	25.00'
L32	S 23°08'53" E	99.87'
L33	S 31°47'11" E	477.65'
L34	S 70°34'42" W	87.27'
L35	S 55°14'17" W	68.04'
L36	S 19°25'18" E	22.50'

CURVE	RADIUS	ARC LENGTH	CHORD LENGTH	CHORD BEARING	DELTA ANGLE
C1	2912.72'	121.03'	121.03'	S 30°35'46" E	02°22'51"
C2	114.83'	160.91'	148.06'	S 10°44'15" W	80°17'10"
C3	550.54'	189.27'	188.34'	S 60°43'46" W	19°41'52"



**PATRIDGE SURVEYORS
AND ENGINEERS L.L.C.**
9464 DUBLIN ROAD
POWELL, OHIO 43065
FAX (614)-799-0030
TEL. (614)-799-0031

PATRIDGE
SURVEYORS & ENGINEERS LLC

**LEGAL DESCRIPTION OF 124.849 ACRES
FOR ANNEXATION PURPOSES**

Situated in the State of Ohio, County of Madison, Township of Darby, located in Virginia Military Survey No. 5125 and 8305, and being part of a 138.361 acre tract conveyed to Bruce A. and Marilyn G. Ratcliff, as recorded in Deed Book 295, page 931, Madison County Recorder's Office, and being more particularly described as follows:

Beginning, for reference, at a point marking the original centerline of Plain City/Georgesville Road (C.R. 7) and Converse Huff Road (C.R. 30);

thence South 70° 21' 04" West 505.74 feet, along the centerline of Converse Huff Road, to the principal place of beginning of the herein area to be annexed;

thence continuing South 70° 21' 04" West 325.17 feet, along the centerline of Converse Huff Road, to a point;

thence North 19° 38' 54" West 420.00 feet, to a point;

thence South 70° 21' 06" West 600.00 feet, to a point;

thence South 19° 38' 54" East 380.00 feet, to a point;

thence South 70° 21' 06" West 60.00 feet to a point;

thence North 19° 38' 54" West 380.00 feet, to a point;

thence South 70° 21' 06" West 399.48 feet, to a point;

thence North 11° 21' 40" West 939.60 feet, to a point;

thence North 76° 06' 18" East 641.38 feet, to a point;

thence North 21° 16' 50" West 643.95 feet to a point;

thence North 87° 43' 06" West 2432.98 feet, to a point;

thence North 01° 24' 46" East 520.93, to a point;

thence North 88° 27' 26" West 542.20 feet to a point;

thence North 01° 37' 26" East 595.10 feet, to a point in the existing Corporation Line of Plain City;

thence South 76° 56' 12" East 1798.20 feet, along the existing Corporation line, to a point;

thence North 78° 43' 01" East 1013.94 feet, along the existing Corporation line, to a point;

thence South 88° 32' 43" East 468.03 feet, to a point in Big Darby Creek;

thence the following 10 courses along Big Darby Creek:

South 17° 05' 24" East 153.84 feet, to a point;

South 34° 51' 37" East 258.60 feet, to a point;

PATRIDGE
SURVEYORS & ENGINEERS LLC

**LEGAL DESCRIPTION OF 124.849 ACRES
FOR ANNEXATION PURPOSES (CONT.)**

South 48° 22' 38" East 55.01 feet, to a point;
South 31° 09' 47" East 170.68 feet, to a point;
South 52° 43' 16" East 198.21 feet, to a point;
South 68° 14' 04" East 196.74 feet, to a point;
South 84° 32' 05" East 112.97 feet, to a point;
South 59° 04' 31" East 170.43 feet, to a point;
South 30° 09' 44" East 284.46 feet, to a point;
South 15° 45' 28" East 165.62 feet, to a point;
thence South 43° 12' 14" West 94.06 feet, to a point;
thence South 61° 38' 44" West 262.30 feet, to a point in the centerline of Plain CityGeorgesville Road;
thence South 31° 47' 11" East 281.07 feet, along the centerline of Plain CityGeorgesville Road, to a point;
thence South 58° 12' 49" West 25.00 feet, to a point;
thence South 23° 08' 53" East 99.87 feet, to a point;
thence South 31° 47' 11" East 477.65 feet, to a point;
thence along the arc of a curve to the right (Radius=2912.72 feet, Delta Angle=02° 22' 51") whose long chord bears South 30° 35' 46" East 121.03 feet, to a point;
thence along the arc of a curve to the right (Radius=114.83 feet, Delta Angle=80° 17' 10") whose long chord bears South 10° 44' 15" West 148.06 feet, to a point;
thence along the arc of a curve to the right (Radius=550.54 feet, Delta Angle=19° 41' 52") whose long chord bears South 60° 43' 46" West 188.34 feet, to a point;
thence South 70° 34' 42" West 87.27 feet, to a point;
thence South 55° 14' 17" West 68.04 feet, to a point;
thence South 19° 25' 18" East 22.50 feet, to the point of beginning, containing an area of 124.849 acres.

This description prepared for annexation purposes only.