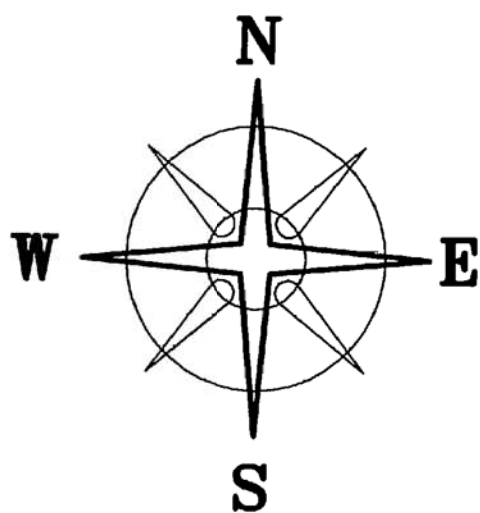


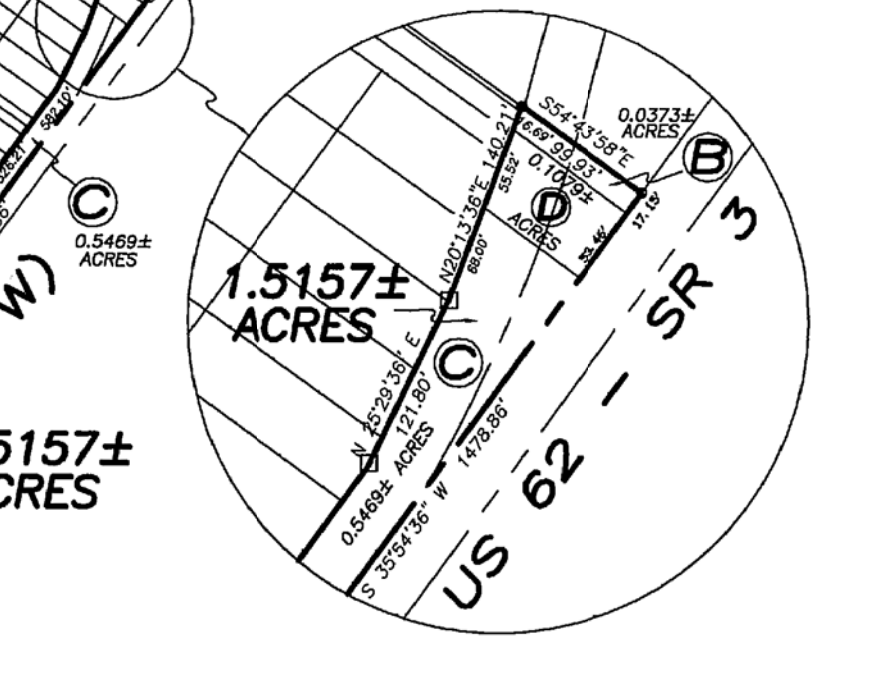
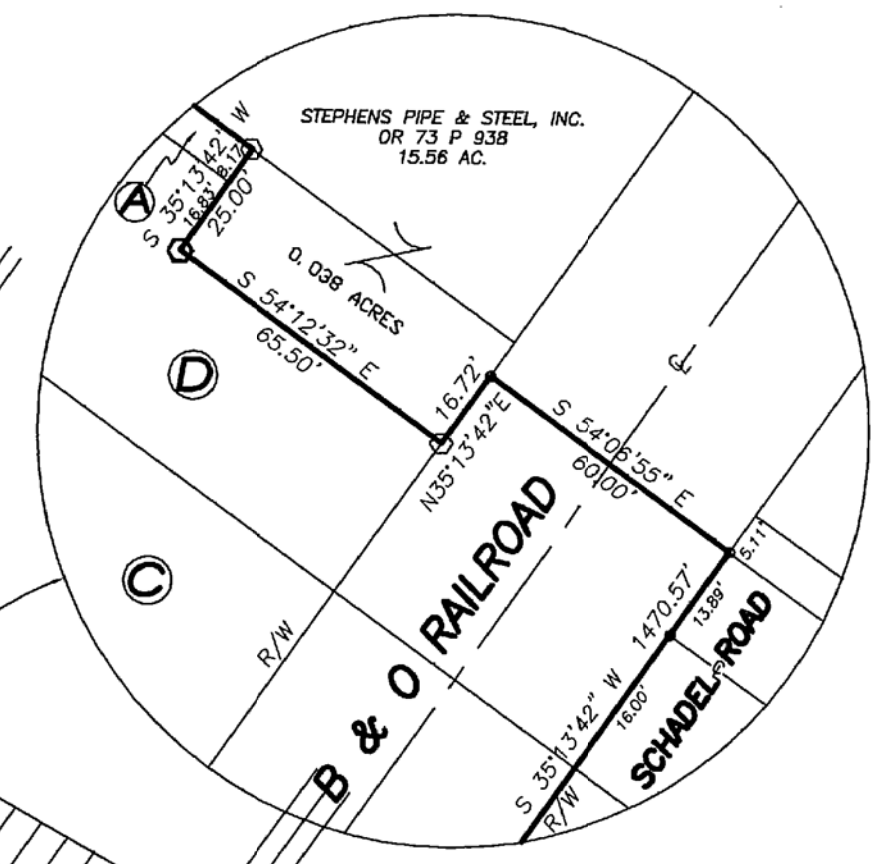
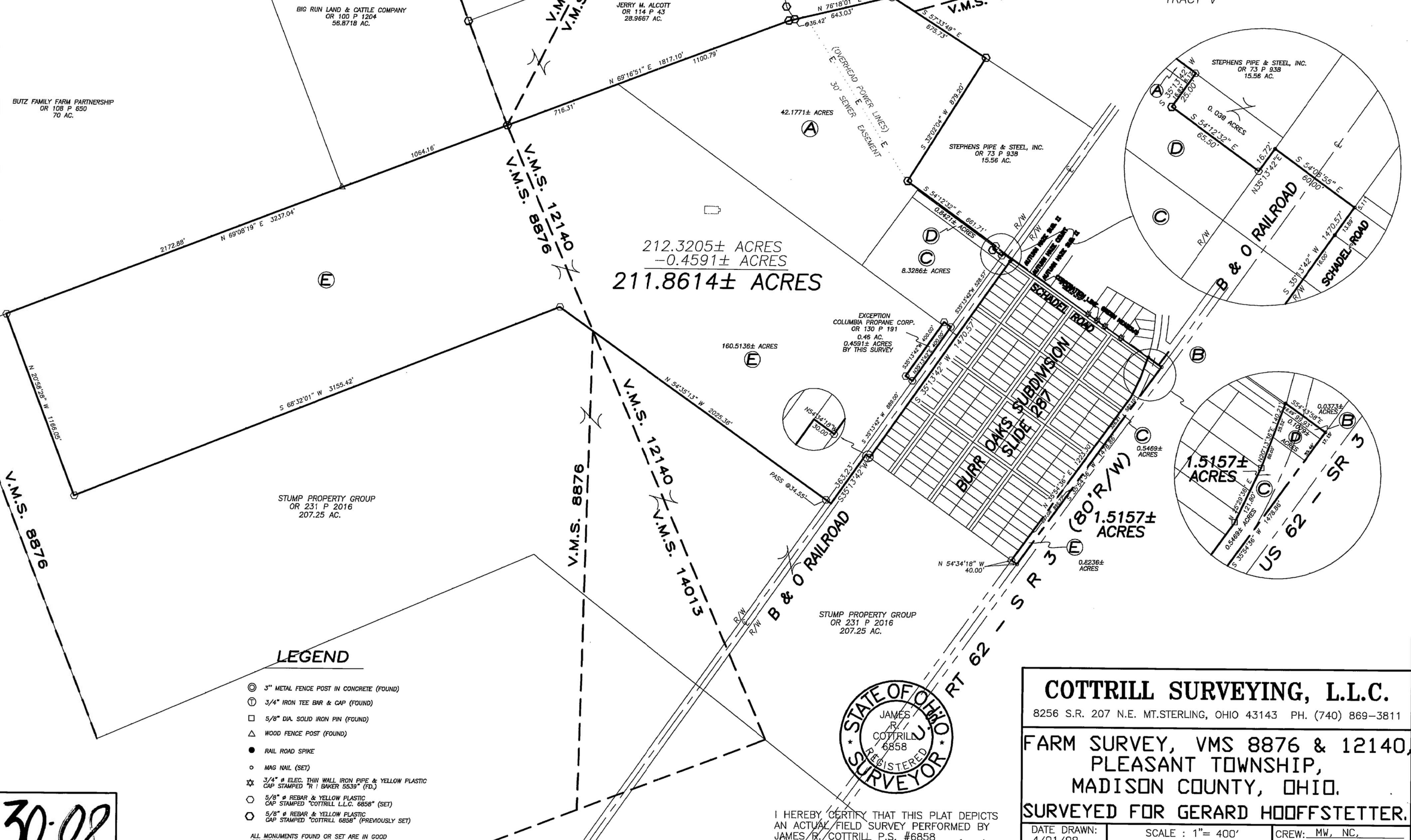
BEARING BASED ON A GPS OBSERVATION ON 03/25/08
WGNS 1984 GEODETIC NORTH



DEED REFERENCE

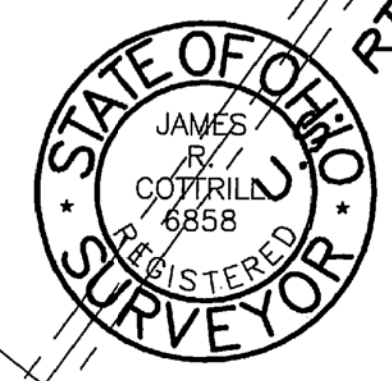
GERARD T. HOOFFSTETTER, TRUSTEE
O R 214 P 2355

- (A) 56.76 ORIG. AC
TRACT I
- (B) 0.75 AC
TRACT II
- (C) 21.75 ORIG. AC
TRACT III
- (D) 2.25 ORIG. AC.
TRACT IV
- (E) 184.29 ORIG. AC
TRACT V



LEGEND

- ⊙ 3" METAL FENCE POST IN CONCRETE (FOUND)
 - ⊕ 3/4" IRON TEE BAR & CAP (FOUND)
 - 5/8" DIA. SOLID IRON PIN (FOUND)
 - △ WOOD FENCE POST (FOUND)
 - RAIL ROAD SPIKE
 - MAG NAIL (SET)
 - ☆ 3/4" ELEC. THIN WALL IRON PIPE & YELLOW PLASTIC CAP STAMPED "R I BAKER 5539" (FD.)
 - 5/8" REBAR & YELLOW PLASTIC CAP STAMPED "COTTRILL L.L.C. 6858" (SET)
 - 5/8" REBAR & YELLOW PLASTIC CAP STAMPED "COTTRILL 6858" (PREVIOUSLY SET)
- ALL MONUMENTS FOUND OR SET ARE IN GOOD CONDITION UNLESS OTHERWISE NOTED.



I HEREBY CERTIFY THAT THIS PLAT DEPICTS AN ACTUAL FIELD SURVEY PERFORMED BY JAMES R. COTTRILL P.S. #6858
DATE: 4/10/08

COTTRILL SURVEYING, L.L.C.
8256 S.R. 207 N.E. MT. STERLING, OHIO 43143 PH. (740) 869-3811

FARM SURVEY, VMS 8876 & 12140, PLEASANT TOWNSHIP, MADISON COUNTY, OHIO.
SURVEYED FOR GERARD HOOFFSTETTER.

DATE DRAWN: 4/01/08	SCALE: 1" = 400' 400' 200' 0 400'	CREW: MW, NC,
JOB # S080304 F. B. #40		DWN. BY: RC CK. BY:

30-08

1.5157 Acre Tract
Surveyed for Gerard Hooffstetter

The following described 1.5157 acre tract is situated in the State of Ohio, Madison County, Pleasant Township, VMS 12140, being part of the original 0.75 acre tract (tract II), part of the original 21.75 acre tract (tract III), part of the original 2.25 acre tract (tract IV), and part of the original 184.29 acre tract (tract V) all 4 tracts conveyed to Gerard Hooffstetter by Official Record 214 page 2355, and being more particularly described as follows:

Beginning at an iron pin and cap set in the northwest right-of-way line of US Route 62/State Route 3 (80 ft. right-of-way) at the southern most corner of the Burr Oaks Subdivision as shown on slide 287, also said iron pin and cap is in the northeast line of a 207.25 acre tract conveyed to Stump Property Group by Official Record 231 page 2016;

Thence, with the southeast line of said Burr Oaks Subdivision and the northwest right-of-way line of said US 62 and SR 3 the following three courses:

- 1) North 35° 54 minutes 36 seconds East, passing the west line of said 21.75 acre tract at 897.08 ft., a total distance of 1223.30 ft. to a 5/8 inch diameter iron pin found
- 2) North 25° 29 minutes 36 seconds East a distance of 121.80 ft. to a 5/8 inch diameter iron pin found
- 3) North 20° 13 minutes 36 seconds East passing the west line of said 2.25 acre tract at 68.00 ft. also passing the east line of said 2.25 acre tract at 123.52 ft., a total distance of 140.21 ft. to my nail set at the southeast corner of Schadel Road

Thence, with the east line of said 0.75 acre tract, South 54° 43 minutes 58 seconds East a distance of 99.93 ft. to a mag nail set in the centerline of said US 62 and SR 3;

Thence, with the centerline of said US 62 and SR 3, South 35° 54 minutes 36 seconds West, passing the west line of said 21.75 acre tract at 582.10 ft., a total distance of 1478.86 ft. to a mag nail set in the said centerline;

Thence, with the northeast line of said to a 7.25 acre tract, North 54° 34 minutes 18 seconds West a distance of 40.00 ft. returning to the point beginning containing **1.5157 Acres** more or less, of which 0.0373 acres more or less is part of said 0.75 acre tract, 0.1079 acres more or less is part of said 2.25 acre tract, 0.5469 acres more or less is part of said 21.75 acre tract, and 0.8236 acres more or less is part of said 184.29 acre tract.

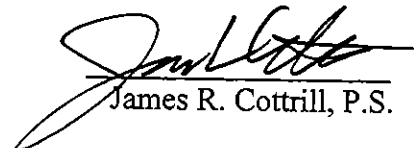
Bearings are based on a GPS observation on 03/25/08 WGS 1984 geodetic North.

This deed is subject to and with the benefit of all legal highways, restrictions, easements, limitations, and reservations, of record, if any and to zoning restrictions which have been imposed thereon, if any.

All iron pins set are 5/8 inch diameter rebar with yellow plastic caps stamped "Cottrill L.L.C. 6858."

This description is based on a field survey performed April 1, 2008 by James R. Cottrill registration #6858. (Job #S080304A)




James R. Cottrill, P.S.

211.8614 Acre Tract
Surveyed for Gerard Hooffstetter

The following described 211.8614 acre tract is situated in the State of Ohio, Madison County, Pleasant Township, VMS 8876 and 12140, being all the remains of the original 56.76 acre tract (tract I), part of the original 21.75 acre tract (tract III), part of the original 2.25 acre tract (tract IV), and all the remains of the original 184.29 acre tract (tract V) all 4 tracts conveyed to Gerard Hooffstetter by Official Record 214 page 2355, and being more particularly described as follows:

Beginning at an iron pin and cap set in the northwest right-of-way line of the B & O Railroad at the southernmost corner of a 0.038 acre tract conveyed to Stephens Pipe and Steel, Inc. by Official Record 73 page 938;

Thence, with the northwest right-of-way line of said B & O Railroad, North 35° 13 minutes 42 seconds East a distance of 16.72 ft. to a mag nail set in the northeast line of said 2.25 acre tract;

Thence, across said railroad with the north east line of said 2.25 acre tract, South 54° 06 minutes 55 seconds East a distance of 60.00 ft. to a mag nail set in the south east right-of-way line of said B & O Railroad and the northwest line of Schadel Road;

Thence, with the south east right-of-way line of said B&O Railroad, South 35° 13 minutes 42 seconds West, passing a mag nail set at 13.89 ft., a total distance of 1470.57 ft., along the northwest line of Burr Oaks Subdivision as shown on slide 287, to an iron pin and cap set at the westernmost corner of said subdivision and in the northeast line of a 207.25 acre tract conveyed to Stump Property Group by Official Record 231 page 2016;

Thence, with said 207.25 acre tract the following 5 courses:

- 1) North 54° 34 minutes 18 seconds West a distance of 30.00 ft. to a point in the centerline of said railroad
- 2) South 35° 13 minutes 42 seconds West, with the centerline of said railroad, a distance of 363.23 ft.
- 3) North 54° 35 minutes 13 seconds West, passing an iron pin and cap set at 34.55 ft., a total distance of 2025.36 feet to an iron pin and cap set
- 4) South 68° 32 minutes 01 seconds West a distance of 3155.42 ft. to an iron pin and cap set
- 5) North 20° 58 minutes 28 seconds West a distance of 1166.05 ft. to an iron pin and cap set in the south line of a 70 acre tract conveyed to Butz Family Farms Partnership by Official Record 108 page 650

Thence, with the south line of said 70 acre tract, North 69° 08 minutes 19 seconds East, passing a wooden fence post found at the southwest corner of a 56.8718 acre tract conveyed to Big Run Land and Cattle Co. by Official Record 100 page 1204 at 2172.88 ft., a total distance of 3237.04 ft. to an iron pin and cap previously set at the southwest corner of a 28.9667 acre tract conveyed to Jerry M. Alcott by Official Record 114 page 43;

Thence, with the south line of said 28.9667 acre tract, North 69° 16 minutes 51 seconds East, passing the northern corner common to said 56.76 and 184.29 acre tracts at 716.31 ft., a total distance of 1817.10 ft. to an iron pin and cap set;

Thence, North 76° 18 minutes 01 seconds East, passing an iron pin and cap previously set at the southwest corner of a 17.5143 acre tract conveyed to R. & C. River Farms LP by Official Record 101 page 1289 at 36.42 ft. a total distance of 643.03 ft. to a 3 in. diameter metal fence post found;

Thence, with said 17.5143 acre tract, South 57° 33 minutes 49 seconds East a distance of 675.73 ft. to an iron pin and cap previously set at the northernmost corner of a 15.56 acre tract conveyed to Stephens Pipe and Steel Inc. by Official Record 73 page 938;

Thence, with said 15.56 acre tract the following 2 courses:

- 1) South 32° 02 minutes 04 seconds West a distance of 879.20 ft. to an iron pin and cap previously set
- 2) South 54° 12 minutes 32 seconds East a distance of 661.71 ft. to an iron pin and cap set at the northernmost corner of said 0.038 acre tract

Thence, with said 0.038 acre tract the following 2 courses:

- 1) South 35° 13 minutes 42 seconds West, passing the line between said 56.76 and 2.25 acre tracts at 8.17 ft., a total distance of 25.00 ft. to an iron pin and cap previously set
- 2) South 54° 12 minutes 32 seconds East a distance of 65.50 ft. returning to the point beginning containing 212.3205 Acres more or less, of which 42.1771 acres more or less is all the remains of said 56.76 acre tract, 0.8421 acres more or less is part of said 2.25 acre tract, 8.3286 acres more or less is part of said 21.75 acre tract, and 160.5136 acres more or less is part of said 184.29 acre tract.

Excepting from the hereinabove described 212.3205 acre tract a 0.46 acre tract (0.4591 acres more or less by this survey) conveyed to Columbia Propane Corp. by Official Record 130 page 191, leaving after said exception **211.8614 Acres** more or less. See plat accompanying this legal description for location of said 0.4591 acre tract.

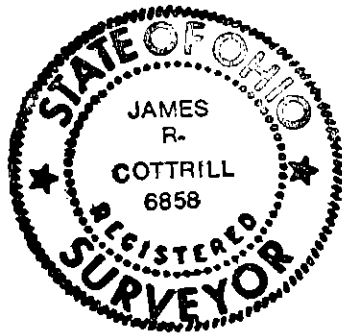
Subject to the right-of-way (60 ft. wide) of the B & O Railroad.

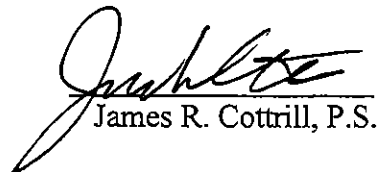
Bearings are based on a GPS observation on 03/25/08 WGS 1984 geodetic North.

This deed is subject to and with the benefit of all legal highways, restrictions, easements, limitations, and reservations, of record, if any and to zoning restrictions which have been imposed thereon, if any.

All iron pins set are 5/8 inch diameter rebar with yellow plastic caps stamped "Cottrill L.L.C. 6858."

This description is based on a field survey performed April 1, 2008 by James R. Cottrill registration #6858. (Job #S080304)




James R. Cottrill, P.S.