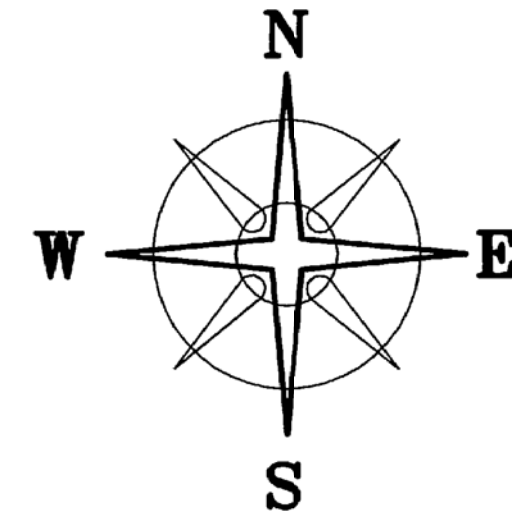
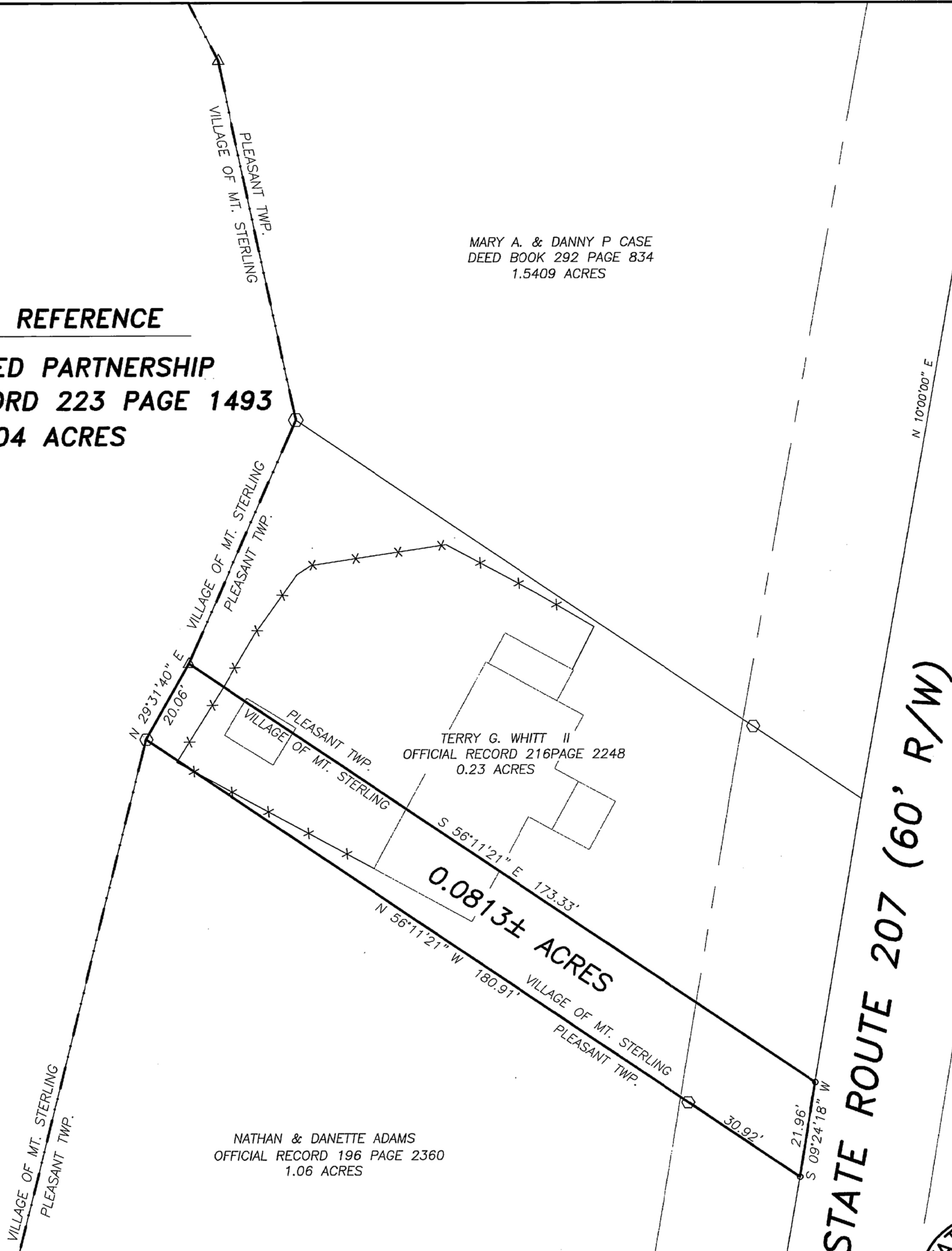


BEARINGS BASED ON THE CENTERLINE OF STATE ROUTE 207
(N 10°00' E) AS DESCRIBED IN OFFICIAL RECORD 223 PAGE 1493



DEED REFERENCE
E5 LIMITED PARTNERSHIP
OFFICIAL RECORD 223 PAGE 1493
11.04 ACRES

MARY A. & DANNY P CASE
DEED BOOK 292 PAGE 834
1.5409 ACRES



NOTE

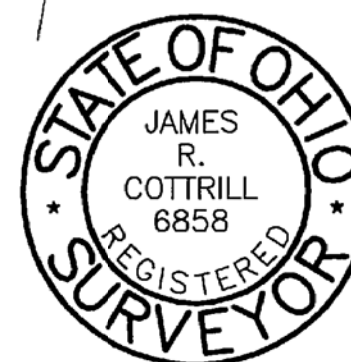
0.0813± ACRE TRACT IS TO BECOME PART OF
AND CONTINGENT TO WHITT'S 0.23 ACRE TRACT.

LEGEND

- △ 5/8" REBAR (FOUND)
- MAG NAIL (SET)
- ◊ 5/8" Ø REBAR & YELLOW PLASTIC CAP STAMPED "COTTRILL 6858" (PREVIOUSLY SET)

ALL MONUMENTS FOUND OR SET ARE IN GOOD
CONDITION UNLESS OTHERWISE NOTED.

STATE ROUTE 207 (60' R/W)



I HEREBY CERTIFY THAT THIS PLAT DEPICTS
AN ACTUAL FIELD SURVEY PERFORMED BY
JAMES R. COTTRILL P.S. #6858

DATE: 12/18/07

COTTRILL SURVEYING, L.L.C.
8256 S.R. 207 N.E. MT. STERLING, OHIO 43143 PH. (740) 869-3811

0.0813 ACRES, VMS 12140,
VILLAGE OF MT. STERLING
MADISON COUNTY, OHIO
SURVEYED FOR TERRY WHITT II

DATE DRAWN: 12/14/07	SCALE : 1" = 20'	CREW: MW
JOB #S071204	20' 10' 0 20'	DWN. BY: MW
F. B. #		CK. BY: RC

46-08

The following described 0.0813 acre tract is situated in the State of Ohio, Madison County, Village of Mount Sterling, VMS 12140, and being part of a 11.04 acre tract conveyed to E5 Limited Partnership by Official Record 223 page 1493, and being more particularly described as follows:

Beginning at a mag nail said in the center line of State Route 207 (60 ft. right-of-way) said mag nail is corner to said 11.04 acre tract and at the northeast corner of a 1.06 acre tract conveyed to Nathan and Danette Adams by Official Record 196 page 2360, and corner of to the Village of Mount Sterling corporation line;

Thence, with the north line of said 1.06 acre tract and said corporation line, North 56° 11 minutes 21 seconds West, passing an iron pin and cap previously set at 30.92 ft., a total distance of 180.91 ft. to an iron pin and cap previously set at the northwest corner of said 1.06 acre tract;

Thence, with a new line across said 11.04 acre tract, North 29° 31 minutes 40 seconds East a distance of 20.06 feet to a 5/8 inch diameter rebar found at the southwest corner of a 0.23 acre tract conveyed to Terry G. Whitt II by Official Record 216 page 2248, and corner to said corporation;

Thence, with the south line of said 0.23 acre tract and said corporation line, South 56° 11 minutes 21 seconds East a distance of 173.33 ft. to a mag nail set in the centerline of said State Route 207;

Thence, with the centerline of said State Route 207 and said corporation line, South 09° 24 minutes 18 seconds West a distance of 21.96 ft. returning to the point beginning containing 0.0813 acres more or less.

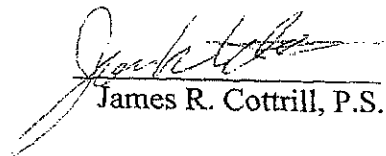
The hereinabove described 0.0813 acre tract is to become part of and contingent to Whitt's 0.23 acre tract.

Bearings are based on the centerline of State Route 207 (North 10° 00 minutes East) as described in Official Record 223 page 1493.

This deed is subject to and with the benefit of all legal highways, restrictions, easements, limitations, and reservations, of record, if any and to zoning restrictions which have been imposed thereon, if any.

All iron pins set are 5/8 inch diameter rebar with yellow plastic caps stamped "Cottrill L.L.C. 6858."

This description is based on a field survey performed December 14, 2007 by James R. Cottrill registration #6858. (Job #S071204)


James R. Cottrill, P.S.

