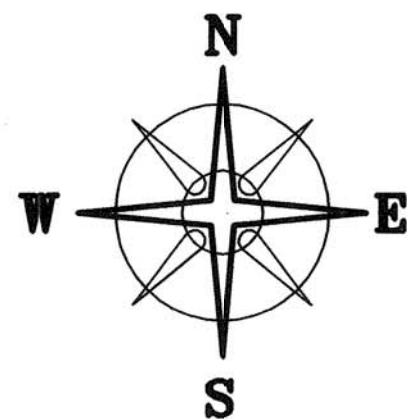


BEARINGS BASED ON THE NORTH LINE OF HOSTETLER'S
31.0 ACRE TRACT (N56°00' E) AS DESCRIBED IN O. R. 125 P 1447.



DAVID R. & SUSAN C. PARKER
DB 242 P 436
95 AC.

GERALD & CAROLE A. TINGLE
OR 116 P 458
19.0 AC.

31.0264± ACRES
C

RICHARD L. MAST
DB 248 P 60
85 AC.

77.1999± ACRES

44.8916± ACRES
A

SEE DETAIL "A"

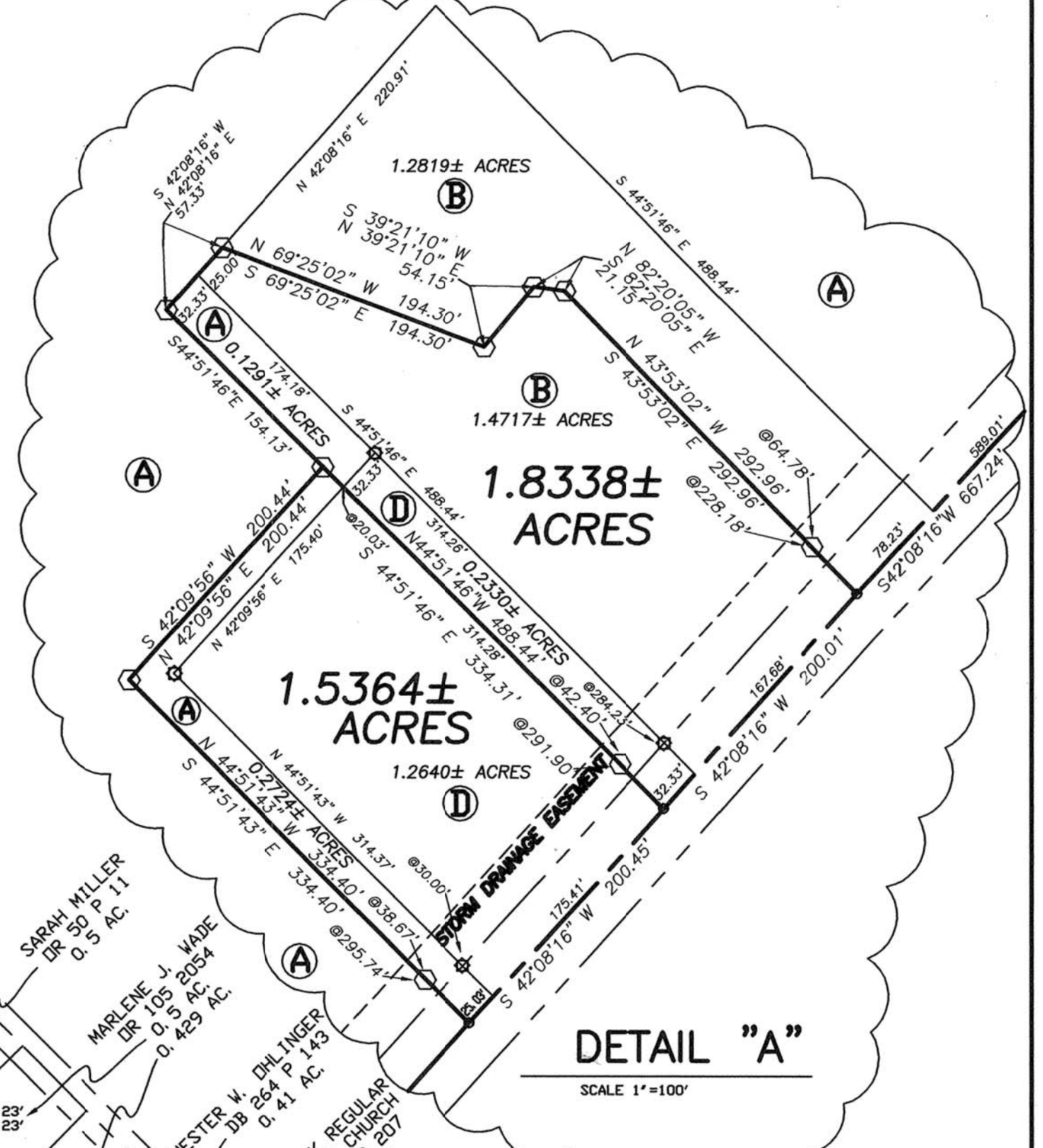
DEED REFERENCE

- WILLIAM E. & CORNELIA HOSTETLER**
OR 125 P 1447
A 45.1581 ACRES
OR 125 P 1445
B 2.7536 ACRES
OR 125 P 1447
C 31.0 ACRES
LOVINA & VERNON HOSTETLER
OR 242 P 1240
D 1.4983

KENNETH & CINDY MILLER
OR 106 P 1920
2 AC.

TAYLOR BLAIR ROAD (CR 14) (50'R/W)

US ROUTE 42 (60'R/W)



DETAIL "A"
SCALE 1"=100'

LEGEND

- IRON PIN & YELLOW PLASTIC CAP
CAP STAMPED "I.R. BAKER 5539" (FD)
 - ☆ R/W MONUMENT BOX (FOUND)
 - 3/4" IRON PIPE (FOUND)
 - 1/2" DIA. SOLID IRON PIN (FOUND)
 - 3/4" DIA. SOLID IRON PIN (FOUND)
 - △ 6" CONCRETE R/W MONUMENT (FOUND)
 - RAIL ROAD SPIKE
 - MAG NAIL (SET)
 - 5/8" REBAR & YELLOW PLASTIC CAP STAMPED "COTTRILL 6858" (SET)
- ALL MONUMENTS FOUND OR SET ARE IN GOOD CONDITION UNLESS OTHERWISE NOTED.

85-08



I HEREBY CERTIFY THAT THIS PLAT DEPICTS AN ACTUAL FIELD SURVEY PERFORMED BY JAMES R. COTTRILL P.S. #6858
DATE: 11/21/08

COTTRILL SURVEYING, L.L.C.
8256 S.R. 207 N.E. MT. STERLING, OHIO 43143 PH. (740) 869-3811

VMS 6000,
JEFFERSON TOWNSHIP,
MADISON COUNTY, OHIO.
SURVEYED FOR BILL HOSTETLER.

DATE DRAWN: 11/17/08	SCALE: 1"=200' 200' 100' 0 200'	CREW: MW
JOB #S081102		DWN. BY: RC
F. B. # 41		CK. BY:

1.5364 Acre Tract
Surveyed for Bill Hostetler

The following described 1.5364 acre tract is situated in the State of Ohio, Madison County, Jefferson Township, VMS 6000, being part of a 45.1581 acre tract conveyed to William E. and Cornelia Hostetler by Official Record 125 page 1447, also part of a 1.4983 acre tract conveyed to Lovina and Vernon Hostetler by Official Record 242 page 1240, and being more particularly described as follows:

Commencing at a centerline right-of-way monument box found at the centerline intersection of US Route 42 (60 ft. right-of-way) with the centerline of Taylor-Blair Road (County Road 14)(50 ft. right-of-way);

Thence, with the centerline of said US Route 42, South 42° 07 minutes 06 seconds West a distance of 366.12 ft. to a mag nail set at the southernmost corner of 1 acre tract conveyed to Yoder Properties, LLC by Official Record 224 page 575, said nail is also corner of to said 45.1581 acre tract;

Thence, continuing with the centerline of said US Route 42, South 42° 08 minutes 16 seconds West, passing the southeast corner of said 1.4983 acre tract at 834.92 ft., a total distance of 667.25 ft. to a mag nail set at **The True Point of Beginning**;

Thence, continuing with the centerline of said US Route 42, South 42° 08 minutes 16 seconds West, passing the southwest corner of said 1.4983 acre tract at 175.41 ft., a total distance of 200.45 feet to a mag nail set;

Thence, with a new line across said 45.1581 acre tract the following to new courses:

- 1) North 44° 51 minutes 43 seconds West, passing an iron pin and cap set at 38.67 ft., a total distance of 334.40 to an iron pin and cap set;
- 2) North 42° 09 minutes 56 seconds East a distance of 200.44 ft. to an iron pin and cap set

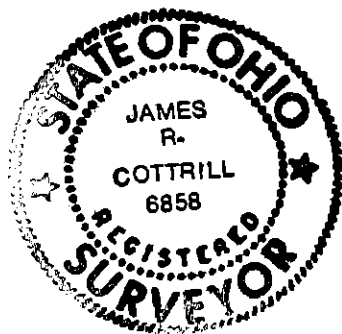
Thence, South 44° 51 minutes 46 seconds East, passing the northwest line of said 1.4983 acre tract at 20.03 ft., also passing an iron pin and cap set at 291.90 ft., a total distance of 334.31 ft. returning to **The True Point Beginning** containing **1.5364 Acres** more or less, of which 0.2724 acres more or less is part of said 45.1581 acre tract and 1.2640 acres more or less is part of said 1.4983 acre tract.

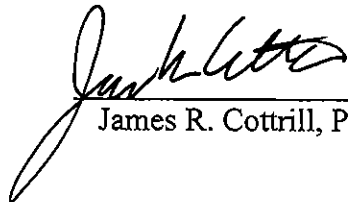
Bearings are based on the north line of Hostetler's 31.0 acre tract (North 56° 00 minutes East) as described and Official Record 125 page 1447.

This deed is subject to and with the benefit of all legal highways, restrictions, easements, limitations, and reservations, of record, if any and to zoning restrictions which have been imposed thereon, if any.

All iron pins set are 5/8 inch diameter rebar with yellow plastic caps stamped "Cottrill L.L.C. 6858."

This description is based on a field survey performed November 19, 2008 by James R. Cottrill registration #6858. (Job #S081102A)




James R. Cottrill, P.S.

1.8338 Acre Tract
Surveyed for Bill Hostetler

The following described 1.8338 acre tract is situated in the State of Ohio, Madison County, Jefferson Township, VMS 6000, being part of a 45.1581 acre tract conveyed to William E. and Cornelia Hostetler by Official Record 125 page 1447, part of a 2.7536 acre tract conveyed to William E. and Cornelia Hostetler by Official Record 125 page 1445, also part of a 1.4983 acre tract conveyed to Lovina and Vernon Hostetler by Official Record 242 page 1240, and being more particularly described as follows:

Commencing at a centerline right-of-way monument box found at the centerline intersection of US Route 42 (60 ft. right-of-way) with the centerline of Taylor-Blair Road (County Road 14)(50 ft. right-of-way);

Thence, with the centerline of said US Route 42, South 42° 07 minutes 06 seconds West a distance of 366.12 ft. to a mag nail set at the southernmost corner of 1 acre tract conveyed to Yoder Properties, LLC by Official Record 224 page 575, said nail is also corner of to said 45.1581 acre tract;

Thence, continuing with the centerline of said US Route 42, South 42° 08 minutes 16 seconds West, passing the southeast corner of said 2.7536 acre tract at 589.01 ft., a total distance of 667.24 ft. to a mag nail set at **The True Point of Beginning**;

Thence, continuing with the centerline of said US Route 42, South 42° 08 minutes 16 seconds West, passing the southeast corner of said 1.4983 acre tract at 167.68 ft., a total distance of 200.01 feet to a mag nail set;

Thence, with a new line across said 1.4983 and 45.1581 acre tracts, North 44° 51 minutes 46 seconds West, passing an iron pin and cap set at 42.40 ft., passing the line between said 1.4983 and 45.1581 acre tracts at 314.28 ft., also passing an iron pin and cap set at 334.31 ft., a total distance of 488.44 ft. to an iron pin and cap set;

Thence, North 42° 08 minutes 16 seconds East, passing the northwest corner of said 2.7536 acre tract at 32.33 ft., and continuing along the northwest line of said 2.7536 acre tract a total distance of a 57.33 ft. to an iron pin and cap set;

Thence, across said 2.7536 acre tract the following 4 new courses:

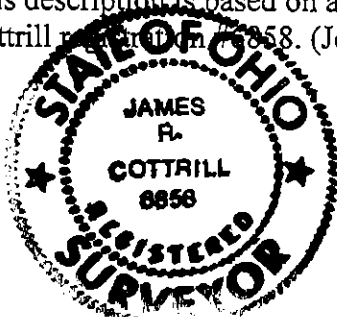
- 1) South 69° 25 minutes 02 seconds East a distance of 194.30 ft. to an iron pin and cap set
- 2) North 39° 21 minutes 10 seconds East a distance of 54.15 ft. to an iron pin and cap set
- 3) South 82° 20 minutes 05 seconds East a distance of 21.15 ft. to an iron pin and cap set
- 4) South 43° 53 minutes 02 seconds East, passing an iron pin and cap set at 228.18 ft., a total distance of 292.96 ft. returning to **The True Point Beginning** containing **1.8338 Acres** more or less, of which 0.1291 acres more or less is part of said 45.1581 acre tract, 1.4717 acres more or less is part of said 2.7536 acre tract, and 0.2330 acres more or less is part of said 1.4983 acre tract.


Bearings are based on the north line of Hostetler's 31.0 acre tract (North 56° 00 minutes East) as described and Official Record 125 page 1447.

This deed is subject to and with the benefit of all legal highways, restrictions, easements, limitations, and reservations, of record, if any and to zoning restrictions which have been imposed thereon, if any.

All iron pins set are 5/8 inch diameter rebar with yellow plastic caps stamped "Cottrill L.L.C. 6858."

This description is based on a field survey performed November 19, 2008 by James R. Cottrill registered Professional Surveyor No. 6858. (Job #S081102)




James R. Cottrill, P.S.

77.1999 Acre Tract
Surveyed for Bill Hostetler

The following described 77.1999 acre tract is situated in the State of Ohio, Madison County, Jefferson Township, VMS 6000, being part of a 45.1581 acre tract conveyed to William E. and Cornelia Hostetler by Official Record 125 page 1447, also part of a 2.7536 acre tract conveyed to William E. and Cornelia Hostetler by Official Record 125 page 1445, and all of a 31.0 acre tract conveyed to William E. and Cornelia Hostetler by Official Record 125 page 1447, and being more particularly described as follows:

Commencing at a centerline right-of-way monument box found at the centerline intersection of US Route 42 (60 ft. right-of-way) with the centerline of Taylor-Blair Road (County Road 14)(50 ft. right-of-way);

Thence, with the centerline of said US Route 42, South 42° 07 minutes 06 seconds West a distance of 366.12 ft. to a mag nail set at the southernmost corner of 1 acre tract conveyed to Yoder Properties, LLC by Official Record 224 page 575, said nail is also corner of to said 45.1581 acre tract, and **The True Point of Beginning**;

Thence, continuing with the centerline of said US Route 42, South 42° 08 minutes 16 seconds West, passing the southeast corner of said 2.7536 acre tract at 589.01 ft., a total distance of 667.24 ft. to a mag nail set;

Thence, across said 2.7536 acre tract the following 4 new courses:

- 1) North 43° 53 minutes 02 seconds West, passing an iron pin and cap set at 64.78 ft., a total distance of 292.96 ft. to an iron pin and cap set
- 2) North 82° 20 minutes 05 seconds West a distance of 21.15 ft. to an iron pin and cap set
- 3) South 39° 21 minutes 10 seconds West a distance of 54.15 ft. to an iron pin and cap set
- 4) North 69° 25 minutes 02 seconds West a distance of 194.30 ft. to an iron pin and cap set in the north line of said 2.7536 acre tract

Thence, with the north line of said 2.7536 acre tract, South 42° 08 minutes 16 seconds West, passing the northwest corner of said 2.7536 acre tract at 25.00 ft., a total distance of 57.33 ft. to an iron pin and cap set;

Thence, across said 45.1581 acre tract the following 3 new courses:

- 1) South 44° 51 minutes 46 seconds East a distance of 154.13 ft. to an iron pin and cap set
- 2) South 42° 09 minutes 56 seconds West a distance of 200.44 ft. to an iron pin and cap set
- 3) South 44° 51 minutes 43 seconds East, passing an iron pin and cap set at 295.74 ft., a total distance of 334.40 ft. to a mag nail set in the centerline of said US Route 42

Thence, with the centerline of said US Route 42, South 42° 08 minutes 16 seconds West a distance of 226.34 ft. to a mag nail set at the southeast corner of a 2 acre tract conveyed to Kenneth and Cindy Miller by Official Record 106 page 1920;

Thence, with the northeast line of said 2 acre tract, North 44° 48 minutes 22 seconds West, passing an iron pin and cap set at 37.25 ft., also passing the southeast corner of an 85 acre tract conveyed to Richard L. Mast by Deed Book 248 page 60 at 880.67 ft., a total distance of a 1581.17 ft. to a 3/4 inch diameter iron pin found at the southernmost corner of said 31.0 acre tract;

Thence, with the north east line of said 85 acre tract, North 44° 48 minutes 22 seconds West a distance of 1399.20 ft. to an iron pin and cap set in the southeast line of a 95 acre tract conveyed to David R. and Susan C. Parker by Deed Book 242 page 436;

Thence, with the southeast line of said 95 acre tract, North 56° 00 minutes 00 seconds East a distance of 1017.87 ft. to the northwest corner of a 19.0 acre tract conveyed to Gerald and Carol A. Tingle by Official Record 116 page 458;

Thence, with said 19.0 acre tract the following two courses:

- 1) South 44° 58 minutes 16 seconds East, passing an iron pin and cap set at 6.01 ft., a total distance of 1299.79 ft. to an iron pin and cap set
- 2) North 50° 23 minutes 56 seconds East a distance of 492.42 ft. to an iron pin and cap set at the northwest corner of a 1.4 acre tract conveyed to Geneva G. Sparks by Deed Book 277 page 528;

Thence, with the southwest line of said 1.4 acre tract and others, South 44° 51 minutes 05 seconds East, passing the northwest corner of a 0.997 acre tract conveyed to Ronald and Kimberly Yoder by Official Record 103 page 1638 at 391.99 ft., also passing the northwest corner of a 0.5 acre tract conveyed to Sarah Miller by Official Record 50 page 11 at 659.44 ft., also passing the northwest corner of a 0.429 acre tract conveyed to Marlene J. Wade by Official Record 105 page 2054 at 790.93 ft., also passing a 0.429 acre tract conveyed to Marlene J. Wade by Official Record 105 page 2054 at 919.85 ft., also passing a 0.41 acre tract conveyed to Chester W. Ohlinger by Deed Book 264 page 143 at 1034.85 ft., a total distance of 1152.16 ft. to a 3/4 inch diameter iron pin found in the northwest line of said Yoder's 1 acre tract;

Thence, with said 1 acre tract the following 2 courses:

- 1) South 42° 49 minutes 07 seconds West a distance of 203.81 ft. to a 3/4 inch diameter iron pipe found
- 2) South 45° 03 minutes 57 seconds East, passing a 3/4 inch diameter iron pin found at 182.42 ft., a total distance of 215.48 ft. returning to **The True Point Beginning** containing 77.1999 Acres more or less, of which 44.8916 acres more or less is part of said 45.1581 acre tract, 1.2819 acres more or less is part of said 2.7536 acre tract, and 31.0264 acres more or less is all that remains of said 31.0 acre tract.

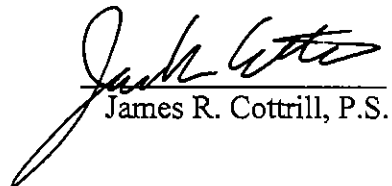
Bearings are based on the north line of Hostetler's 31.0 acre tract (North 56° 00 minutes East) as described and Official Record 125 page 1447.

This deed is subject to and with the benefit of all legal highways, restrictions, easements, limitations, and reservations, of record, if any and to zoning restrictions which have been imposed thereon, if any.

All iron pins set are 5/8 inch diameter rebar with yellow plastic caps stamped "Cottrill L.L.C. 6858."

This description is based on a field survey performed November 19, 2008 by James R. Cottrill registration #6858. (Job #S081102B)




James R. Cottrill, P.S.