



Engineering & Surveying

Phone: (614) 841-9500

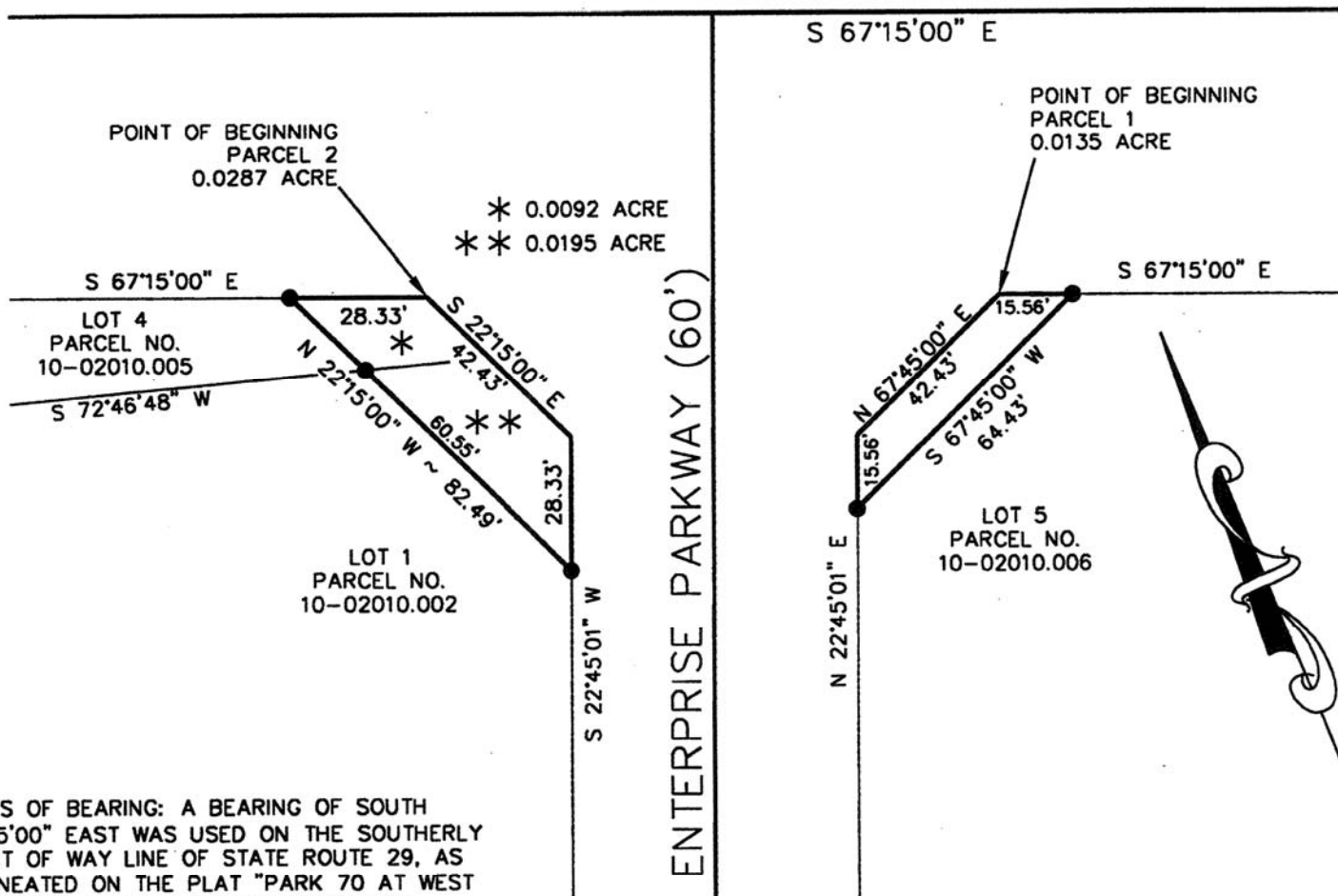
705-F Lakeview Plaza Boulevard Worthington, Ohio 43085-4779

Fax: (614) 841-0170

Email: info@brhgroup.com

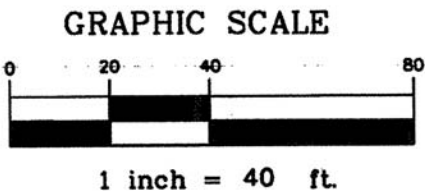
SITUATED IN THE STATE OF OHIO, COUNTY OF MADISON, VILLAGE OF WEST JEFFERSON, SURVEY NO. 9232 IN THE VIRGINIA MILITARY DISTRICT, BEING A 0.0135 ACRE TRACT OF LAND (PARCEL 1) ALL OUT OF THAT LOT 5 AND A 0.0287 ACRE TRACT OF LAND (PARCEL 2) COMPRISED OF 0.0092 ACRE OUT OF LOT 4 AND 0.0195 ACRE OUT OF LOT 1 AS DELINEATED ON THE PLAT "PARK 70 AT WEST JEFFERSON PHASE I AND DEDICATION OF ENTERPRISE PARKWAY", OF RECORD IN PLAT RECORD B335 THROUGH B343, ON FILE IN THE RECORDER'S OFFICE, MADISON COUNTY, OHIO.

STATE ROUTE 29 (R/W VARIES)



BASIS OF BEARING: A BEARING OF SOUTH 67°15'00" EAST WAS USED ON THE SOUTHERLY RIGHT OF WAY LINE OF STATE ROUTE 29, AS DELINEATED ON THE PLAT "PARK 70 AT WEST JEFFERSON PHASE I AND DEDICATION OF ENTERPRISE PARKWAY" OF RECORD IN PLAT RECORD B335 THROUGH B343 OF RECORD IN THE RECORDER'S OFFICE, MADISON COUNTY, OHIO.

● IRON PINS SET ARE 1" REBAR, 30" LONG WITH AN ALUMINUM CAP STAMPED "BRH GROUP".



BRH GROUP, INC.

JOHN L. PRICE
PROFESSIONAL SURVEYOR No. 7159

11/21/2008