

MARK C. RUTHENBERG  
O.R. 183, PAGE 072  
5.0730 Ac.  
PATRICIA A. GARLAND  
O.R. 151, PAGE 305  
5.0729 Ac.

P.O.B.  
158.232 Ac.  
P.O.C.  
15.480 Ac.

**YANKEETOWN-CHENOWETH ROAD (50')**  
(COUNTY ROAD No. 9)

**NATIONAL GEODETIC SURVEY CONTROL MONUMENTS**  
NAME: NAD 83 (NSRS2007) ELLIPSOID: OHIO STATE PLANE COORDINATES NAVD 88  
FAY 35: LATITUDE: 39°31'44.97878"N LONGITUDE: 83°27'56.99996"W HEIGHT: 910.936 NORTHING: 558403.4239 EASTING: 1696081.7128 ELEVATION: 1017.058  
RESIDUALS: ΔH = 0.037 SFT ΔV = -0.046 SFT

**SITE BASE STATION "WOODS (2001)" LOCAL SITE SETTINGS**  
WOODS (2001): 39°41'42.71028"N 83°20'59.97545"W 834.849 618549.594 1729323.272 941.704  
GROUND SCALE FACTOR: 1.0000892597  
GEOID MODEL: GEOID03 (CONUS)  
LOCAL GROUND COORDINATES: NAVD 88  
NORTHING: 618549.594 EASTING: 1729323.272 ELEVATION: 941.704  
UNITS ARE IN U.S. SURVEY FEET (SFT)

VOLUME \_\_\_\_\_ PLAT NO. \_\_\_\_\_  
FAYETTE & MADISON COUNTY ENGINEER'S  
RECORD OF LAND SURVEYS  
DATE MAY 22, 2009  
SCALE 1"=400'  
DEED REFERENCE  
OFFICIAL RECORD PAGE  
TOWNSHIP MADISON AND RANGE  
MILITARY SURVEY NUMBER 9721

BEARINGS ARE BASED UPON THE GRID AZIMUTH (AZ 28° 55' 42.7") BETWEEN NATIONAL GEODETIC SURVEY MONUMENTS "FAY 35" AND MCCARTY ASSOCIATES GEODETIC SURVEY MONUMENT "WOODS (2001)" AND DERIVED FROM GPS OBSERVATIONS TAKEN DECEMBER 29, 2008, UTILIZING THE TRIMBLE ODOT CORS VRS (VIRTUAL REFERENCE SYSTEM).

KIMBERLY S. HAAF  
O.R. 185, PAGE 1071  
5.0729 Ac.  
THELMA BLANTON  
O.R. 183, PAGE 009  
5.0729 Ac.  
MICHAEL WILLIAMS,  
ET AL  
O.R. 001, PAGE 1026  
5.0728 Ac.  
DERRICK CROCKETT,  
ET AL  
O.R. 184, PAGE 553  
5.0728 Ac.  
RICHARD L. LAHMON,  
ET AL  
O.R. 017, PAGE 763  
5.0728 Ac.  
JAMES W. RUBRECHT,  
ET AL  
O.R. 181, PAGE 471  
5.0727 Ac.

PAMELA J. SMITH,  
ET AL  
O.R. 184, PAGE 191  
6.5939 Ac.

FLORENCE P. RENO,  
TRUSTEE  
O.R. 057, PAGE 543 (F.C.)  
D.B. 261, PAGE 546 (M.C.)

P.O.B.  
15.480 Ac.

MADISON COUNTY  
FAYETTE COUNTY  
S 86°28'25" E 3,766.27'  
TO 7" X 7" COUNTY LINE  
STONE (FOUND)

**COOK-YANKEETOWN ROAD (50')**  
(COUNTY ROAD No. 34)

FLORENCE P. RENO,  
TRUSTEE  
O.R. 057, PAGE 543 (F.C.)  
D.B. 261, PAGE 546 (M.C.)

WALTER R. GOLDIN, III  
O.R. 174, PAGE 814  
1.048 Ac.

P.O.B.  
118.947 Ac.

JANA ALEXANDER FRAZIER  
O.R. 148, PAGE 754  
5.0010 Ac.

WILLIAM R. FRAZIER  
O.R. 165, PAGE 1215  
13.7411 Ac.

ROMINE AND FRAZIER FAMILY, LLC  
O.R. 147, PAGE 2999  
FOURTH TRACT  
4.4677 Ac.

158.232 Ac.

118.947 Ac.

FREIDA M. KING,  
TRUSTEE  
D.B. 180, PAGE 626  
TRACT IV  
PARCEL 3  
24.68 Ac.

E.J. MILLER,  
TRUSTEE  
O.R. 154, PAGE 3107  
PARCEL 3  
180.9552 Ac.

WILLIAM WATKINS,  
ET UX  
O.R. 088, PAGE 870  
5.0727 Ac.

ELMER R. GORDON,  
ET UX  
O.R. 149, PAGE 1244  
5.0669 Ac.

KIM L.M. LLOYD,  
ET CON  
O.R. 154, PAGE 1738  
6.4614 Ac.

BALDWIN CEMETERY  
BOOK B, PAGE 69  
DEED SEARCHED FOR BUT NOT FOUND

MICHAEL J. STANTON,  
ET AL  
O.R. 161, PAGE 619  
PARCEL ONE  
1.691 Ac.

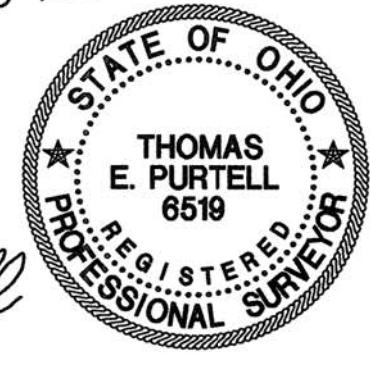
MICHAEL J. STANTON,  
ET AL  
O.R. 161, PAGE 619  
PARCEL TWO  
2.322 Ac.

FRANK L. McALKICH,  
ET AL  
O.R. 012, PAGE 599  
13.5396 Ac.

**NOTES**  
THE ABOVE LISTED DEED REFERENCES WERE USED AS A BASIS FOR CARRYING OUT THE WORK.  
NO EVIDENCE OF OCCUPATION EXISTS ALONG PROPERTY LINES INDICATED BY SOLID LINES.  
ALL MONUMENTS FOUND OR SET ARE IN GOOD CONDITION UNLESS OTHERWISE INDICATED.

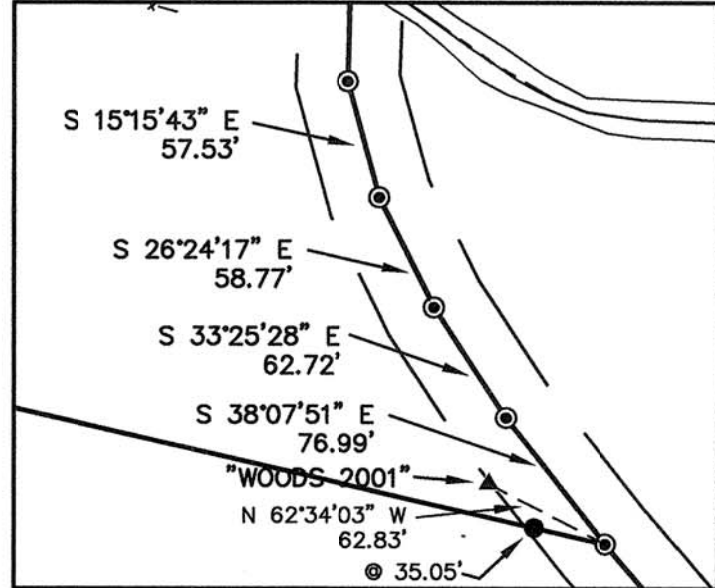
I HEREBY CERTIFY THIS TO BE A PLAT OF A SURVEY MADE UNDER MY DIRECTION IN DECEMBER, 2008, AND MAY, 2009.

Thomas E. Purtell  
THOMAS E. PURTELL, P.S. 6519



LINE TABLE		
LINE No.	BEARING	LENGTH
L1	N 31°06'59" E	63.71'
L2	S 36°04'02" E	267.59'
L3	S 2°47'02" E	510.28'
L4	S 32°41'01" E	216.57'
L5	S 80°43'39" E	194.19'
L6	S 49°57'46" E	322.38'
L7	S 28°23'50" E	244.99'
L8	S 42°13'10" E	78.03'
L9	S 87°31'34" E	79.17'
L10	N 15°39'57" E	181.91'
L11	S 15°15'43" E	57.53'
L12	S 26°24'17" E	58.77'
L13	S 33°25'28" E	62.72'
L14	S 38°07'51" E	76.99'

LINE TABLE		
LINE No.	BEARING	LENGTH
L15	S 67°52'14" W	30.00'
L16	N 54°08'56" E	75.00'
L17	S 31°12'45" W	35.00'
L18	N 30°20'55" E	15.00'
L19	S 49°02'55" W	20.00'
L20	S 58°04'14" W	20.00'



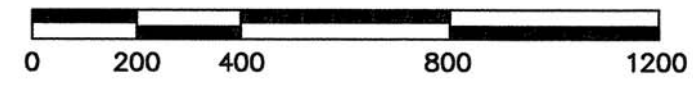
DETAIL  
1"=100'

**DEED REFERENCE:**  
JAMES L. WOODS, DONALD P. WOODS,  
MARY W. BUMGARNER, AND PAUL W. WOODS  
O.R. 169, PAGE 3199 (F.C.)  
O.R. 242, PAGE 922 (M.C.)  
295.57 Ac.

SURVEY FOR  
**JAMES L. WOODS, ET AL**  
RANGE TOWNSHIP - MADISON COUNTY, OHIO  
MADISON TOWNSHIP - FAYETTE COUNTY, OHIO  
V.M.S. No. 9721

**McCARTY ASSOCIATES, LLC**  
ARCHITECTS - ENGINEERS - SURVEYORS  
213 N. HIGH ST., HILLSBORO, OHIO 45133 PH. 937-393-9971 FAX 937-393-2480  
1515 ST. RT. 28 SUITE E, LOVELAND, OHIO 45140 PH. 513-722-0300 FAX 513-722-0500  
304 E. MARKET ST., WASHINGTON C.H., OHIO 43160 PH. 740-335-3816 FAX 740-335-5828  
www.mccartyassociates.com

DATE	SCALE	PROJECT NO.
MAY 22, 2009	1"=400'	S08-802 A & B



18-09

**LEGAL DESCRIPTION**

Brian Thompson  
158.231 Acres Tract

Situated in the Township of Range, County of Madison and the Township of Madison, County of Fayette, State of Ohio, and being a part of V.M.S. No. 9721, and being a part of the 295.57 acres tract as conveyed to James L. Woods, Donald P. Woods, Mary W. Bungarner, and Paul W. Woods and recorded in Official Record Volume 169, Page 3199 of the Fayette County Recorder's Office and Official Record 242, Page 922 of the Madison County Recorder's Office, and being further bounded and described as follows:

Beginning at a Mag nail (set) in the centerline of Yankeetown-Chenoweth Road (Madison County Road No. 9), said Mag nail being the northeasterly corner of Range Township Cemetery (Deed Reference Not Found);

thence with centerline of Yankeetown-Chenoweth Road S 58°26'21" E, a distance of 770.58 ft. to a 1/2" iron pin (found) on the line between Madison County and Fayette County;

thence continuing with the centerline of Cook-Yankeetown Road (Fayette County Road No. 34) S 58°29'13" E, a distance of 51.50 ft. to a Mag nail (set);

thence with a new division line for the next six calls:

- (1) S 31°06'59" W, passing a 5/8" iron pin (set) at 14.40 ft., a total distance of 63.71 ft. to a point in the North Fork of Paint Creek;
- (2) S 36°04'02" E, a distance of 267.59 ft. to a point in said creek from which a 5/8" iron pin (set) bears S 67°52'14" W, a distance of 30.00 ft.;
- (3) S 02°47'02" E, a distance of 510.28 ft. to a point in said creek from which a 5/8" iron pin (set) bears N 54°08'56" E, a distance of 75.00 ft.;
- (4) S 32°41'01" E, a distance of 216.57 ft. to a point in said creek from which a 5/8" iron pin (set) bears S 31°12'45" W, a distance of 35.00 ft.;

(5) S 80°43'39" E, a distance of 80.92 ft. to a point in said creek;

(6) S 31°41'53" W, passing a 5/8" iron pin (set) at 35.00 ft., a total distance of 2746.25 ft. to 14 inch square concrete post, said post being a corner to a 180.9552 acres "Parcel 3" as conveyed to E. J. Miller, Trustee (O.R. 154, Page 3107);

thence with the line of E. J. Miller, Trustee S 31°56'06" W, a distance of 712.22 ft. to a 14 inch square concrete post (found);

thence continuing with the line of E. J. Miller, Trustee N 57°47'33" W, a distance of 1668.49 ft. to a 10 inch wood post (found); said post being a corner to a 24.68 acres "Tract IV, Parcel 3" as conveyed to Freida M. King, Trustee (D.B. 180, Page 626);

thence with King's line N 57°47'33" W, a distance of 132.18 ft. to a 1" square iron pin (found); said iron pin being a corner to a 5.0730 acres tract as conveyed to Mark C. Ruthenberg (O.R. 183, Page 072);

thence with line of Ruthenberg passing the easterlymost corner thereof and continuing with the line of a 5.0729 acres tract as conveyed to Patricia A. Garland (O.R. 151, Page 305) passing the easterlymost corner thereof and continuing with the southeasterly line of a 5.0729 acres tract as conveyed to Kimberly S. Haaf (O.R. 165, Page 1071) passing the easterlymost corner thereof and continuing with the easterly line of a 5.0729 acres tract as conveyed to Thelma Blanton (O.R. 183, Page 009) passing the easterlymost corner thereof and continuing with the 5.0728 acres tract as conveyed to Michael Williams, et al (O.R. 001, Page 1026) passing the easterlymost corner thereof and continuing with the southeasterly line of a 5.0728 acres tract as conveyed to Derrick Crockett, et al (O.R. 184, Page 553) passing the easterlymost corner thereof and continuing with the southeasterly line of a 5.0728 acres tract as conveyed to Richard L. Lahmon, et al (O.R. 017, Page 763) passing the easterlymost corner thereof and continuing with the southeasterly line of a 5.0727 acres tract as conveyed to James

W. Rubrecht, et al (O.R. 181, Page 471) passing the easterlymost corner thereof and continuing with the southeasterly line of a 5.0727 acres tract as conveyed to William Watkins, et ux (O.R. 088, Page 870) passing the easterlymost corner thereof and continuing with the southeasterly line of a 6.5939 acres tract as conveyed to Pamela J. Smith, et al (O.R. 184, Page 191) N 32° 42' 40" E, a distance of 2330.33 ft. to a 5/8" iron pin (found);

thence continuing with Smith's line N 31°06'32" E, a distance of 688.14 ft. to a 1/2" angle iron (found); said angle iron being a corner to a 5.0669 acres tract as conveyed to Elmer R. Gordon, et ux (O.R. 149, Page 1244);

thence with Gordon's line passing the easterlymost corner thereof and continuing with the southeasterly line of a 6.4614 acres tract as conveyed to Kim L. M. Lloyd, et con (O.R. 154, Page 1738) N 31°07'13" E, a distance of 568.06 ft. to a nail (found) in the side of a 7 inch wood post, said nail being the westerlymost corner of the aforementioned cemetery (Deed Not Found);

thence with line of said cemetery S 59°53'06" E, a distance of 181.00 ft. to a 5/8" iron pin (set) by a 6 inch wood post;

thence continuing with the southeasterly line of said cemetery N 27°39'21" E, passing a 6 inch metal post (found) at 473.35 ft., a total distance of 498.94 ft. to the beginning, containing 158.231 acres of land of which 3.711 acres are contained in Madison County and 154.520 acres are contained in Fayette County.

Subject to all legal easements and rights-of-way of record.

Bearings are based upon the Grid Azimuth (Az 28° 55' 42.7") between National Geodetic Survey Monument "FAY 35" and McCarty Associates Geodetic Monument "WOODS (2001)" and derived from GPS observations taken December 29, 2008, utilizing the Trimble ODOT CORS VRS (Virtual Reference System).

Land surveyed in December 2008 and May 2009, under the direction of Thomas E. Purtell, Registered Professional Surveyor No. 6519, the survey plat of which is referred to as Project No. S08-802B on file in the office of McCarty Associates, LLC, Hillsboro, Ohio.

*Thomas E. Purtell*

Thomas E. Purtell, P.S. 6519

