



LOCATION MAP

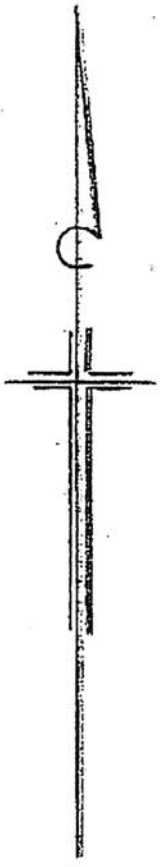
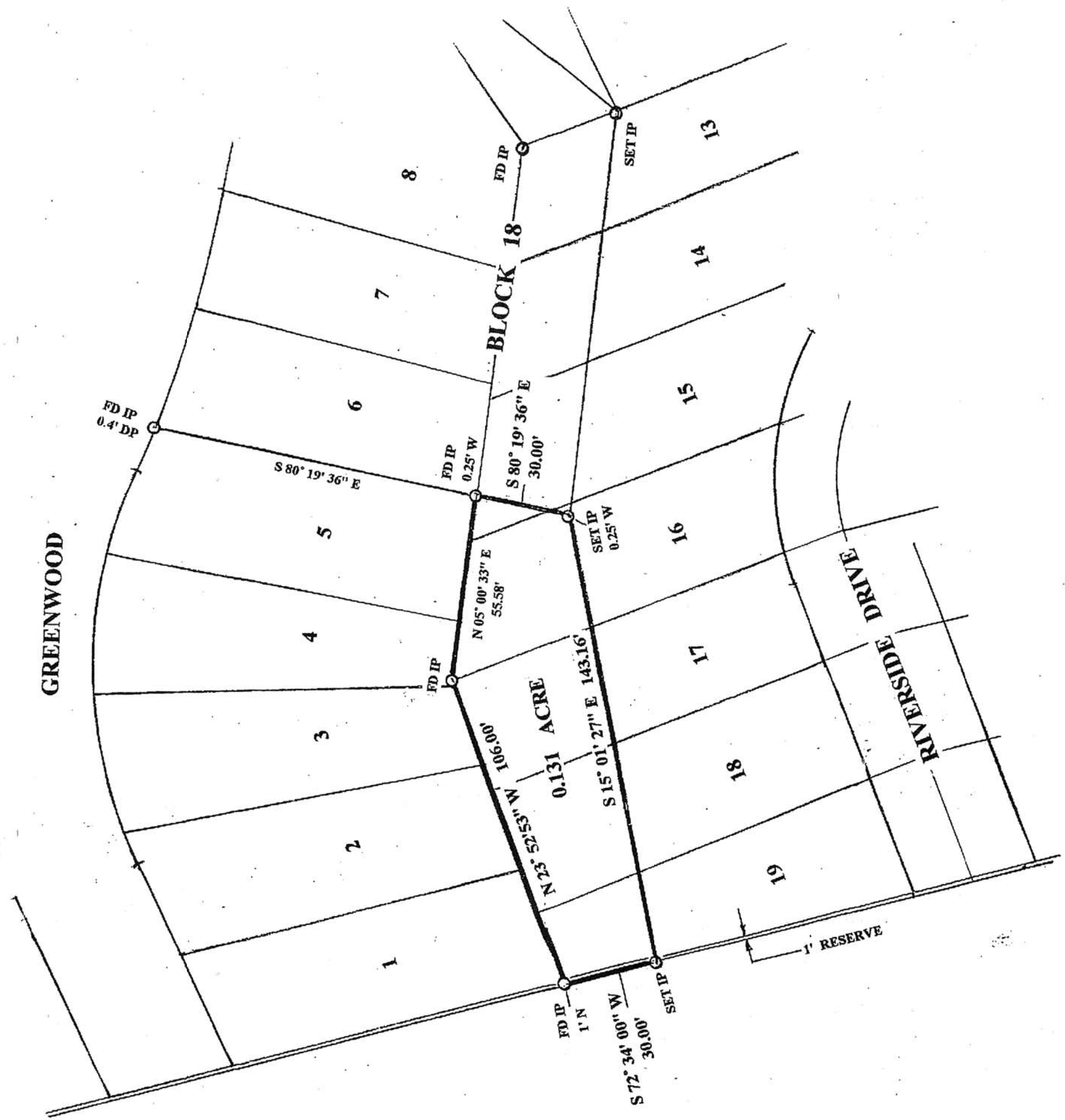
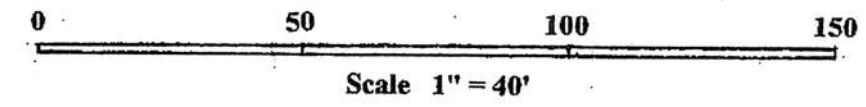
PLAT OF SURVEY
 OF 0.131 ACRE OUT OF
 LOTS 15, 16, 17, 18, & 19, BLOCK 18
 DARBY CREST ADDITION
 JEFFERSON TWP., MADISON CO. OHIO

APRIL 2009 392-08

FOR
 JOHN K. EVERETT, ATTORNEY

THE THOMAS ENGINEERING & SURVEYING CO.

Robert G. Watts
 Robert G. Watts, RPLS #4138





THE *Thomas* ENGINEERING AND SURVEYING CO.
REGISTERED PROFESSIONAL ENGINEERS AND SURVEYORS
P. O. BOX 28098. COLUMBUS, OHIO 43228-0098 : 614-276-2619

DESCRIPTION OF 0.131 ACRE OUT OF LOTS 15, 16, 17, 18,
& 19, BLOCK EIGHTEEN (18), DARBY CREST ADDITION,
MADISON COUNTY, OHIO AND OUT OF THE RACHEL E. RICHARDS
AND HELEN E. STEVENS TRACT I, (A)

Situate in the State of Ohio, County of Madison, Township of Jefferson and being part of the property transferred to Rachel E. Richards and Helen E Stevens by deed of record in Official Record 238, Page 1970, Records Office, Madison County, Ohio as Tract I, (A) which includes Lots One (1) through Six (6) inclusive of Block Nineteen (19) and Lots Thirteen (13) through Nineteen (19) inclusive, of Block Eighteen (18) of Darby Crest Addition of record in Plat Book 1, Page 252 (Slide 248), Records Office, Madison County, Ohio with the following described parcel being parts of said Lots Fifteen (15), through Nineteen (19) inclusive of Block Eighteen (18) of said Darby Crest Addition and out of said Tract I, (A), and being more particularly described as follows:

Beginning at a found iron pin on the north line of a one (1) foot reserve along the entire south line of said Darby Crest Addition, being North 23° 52' 53" West, a distance of 1.00 foot from the southwest corner of said Lot Nineteen (19) and the southwest corner of said Tract I, (A); thence, with the west lines of said Lots Nineteen (19), Eighteen (18), and Seventeen (17), and the west line of said Tract I, (A),

North 23° 52' 53" West, a distance of 105.00 feet to a found iron pin at the northwest corner of said Lot Seventeen (17) and a corner of said Tract I, (A); thence with the west lines of said Lots Sixteen (16) and part of Lot Fifteen (15), and continuing with said west line of Tract I, (A),

North 05° 00' 33" East, a distance of 55.58 feet to the northeast corner of Lot Five (5), Block Eighteen (18) of said Darby Crest Addition, being South 80° 19' 36" East a distance of 0.25 feet from a found iron pin, and South 80° 19' 36" East, from a found iron pin at the northwest corner of said Lot 5, Block 18; thence across said Lots Fifteen (15) and Sixteen (16), and across said Tract I, (A),


South 80° 19' 36" East, a distance of 30.00 feet to a point in said Lot Sixteen (16), passing a set iron pin at 29.75 feet; thence across said Lots Sixteen (16), Seventeen (17), Eighteen (18), and Nineteen (19),

South 15° 01' 27" East, a distance of 143.16 feet to a set iron pin on the south line of said Lot Nineteen (19), the south line of said one (1) foot reserve, and the south line of said Tract I (A); thence with said south lines,

South 72° 34' 00" West, a distance of 30.00 feet to the southwest corner of said Lot 19, Block 18 and said southwest corner of said Tract I, (A); thence with the west line of said Lot 19 and the west line of said Tract I, (A),

North 23° 52' 53" West, a distance of 1.00 foot to the point of beginning containing 0.131 acre and being subject however to all legal easements of record, and said 1.00 foot reserve off the entire south side of said Darby Crest Addition and off the entire south side of said Lot 19, Block 18.

All Official Records and Plat Books mentioned are those found in the Recorders Office, Madison County, Ohio. All set iron pins are 5/8"x30" rebars with red plastic caps embossed "Thomas Engr & Surveying". Bearings are based on the bearing of South 17° 35' West for the center of Riverside Drive at the fronts of Lots 13, 14, and 15, Block 15 as found on the record plat of Darby Crest Addition in Plat Book 1, Page 252 (Slide 248), Recorders Office, Madison County, Ohio. This description is based on field surveys of July 2008 and April 2009 by Robert G. Watts. Reg Prof. Surveyor #4138.


Robert G. Watts
RPLS #4138

