

BEARINGS BASED ON THE C. OF US 62/SR 3 (N37° 04'E)
AS SHOWN ON R/W PLANS MAD.CO. S.H. 50 SEC. N. SHEET 2/3.

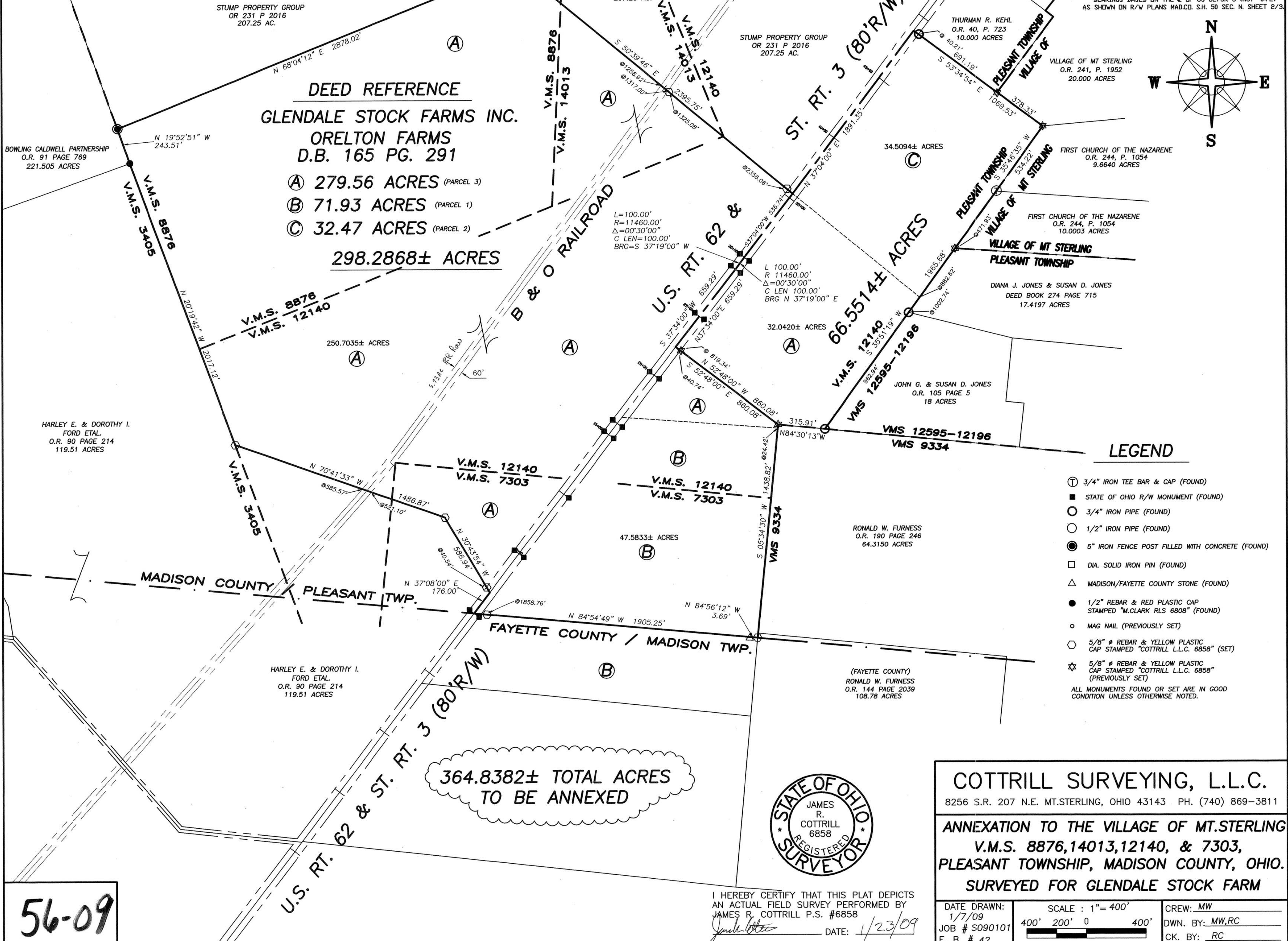


DEED REFERENCE
GLENDALE STOCK FARMS INC.
ORELTON FARMS
D.B. 165 PG. 291

- (A) 279.56 ACRES (PARCEL 3)
- (B) 71.93 ACRES (PARCEL 1)
- (C) 32.47 ACRES (PARCEL 2)

298.2868± ACRES

**364.8382± TOTAL ACRES
TO BE ANNEXED**



LEGEND

- ⊕ 3/4" IRON TEE BAR & CAP (FOUND)
 - STATE OF OHIO R/W MONUMENT (FOUND)
 - 3/4" IRON PIPE (FOUND)
 - 1/2" IRON PIPE (FOUND)
 - 5" IRON FENCE POST FILLED WITH CONCRETE (FOUND)
 - DIA. SOLID IRON PIN (FOUND)
 - △ MADISON/FAYETTE COUNTY STONE (FOUND)
 - 1/2" REBAR & RED PLASTIC CAP STAMPED "M.CLARK RLS 6808" (FOUND)
 - MAG NAIL (PREVIOUSLY SET)
 - 5/8" # REBAR & YELLOW PLASTIC CAP STAMPED "COTTRILL L.L.C. 6858" (SET)
 - ☆ 5/8" # REBAR & YELLOW PLASTIC CAP STAMPED "COTTRILL L.L.C. 6858" (PREVIOUSLY SET)
- ALL MONUMENTS FOUND OR SET ARE IN GOOD CONDITION UNLESS OTHERWISE NOTED.



COTTRILL SURVEYING, L.L.C.
8256 S.R. 207 N.E. MT. STERLING, OHIO 43143 PH. (740) 869-3811

ANNEXATION TO THE VILLAGE OF MT. STERLING
V.M.S. 8876, 14013, 12140, & 7303,
PLEASANT TOWNSHIP, MADISON COUNTY, OHIO.
SURVEYED FOR GLENDALE STOCK FARM

I HEREBY CERTIFY THAT THIS PLAT DEPICTS AN ACTUAL FIELD SURVEY PERFORMED BY JAMES R. COTTRILL P.S. #6858
DATE: 1/23/09

DATE DRAWN: 1/7/09	SCALE : 1" = 400'	CREW: MW
JOB # S090101	400' 200' 0 400'	DWN. BY: MW, RC
F. B. # 42		CK. BY: RC

56-09

Proposed Annexation to the Village of Mount Sterling
298.2868 Acre Tract
Surveyed for John Shilling

The following described 298.2868 acre tract is situated in the State of Ohio, Pleasant Township, VMS 7303, 8876, 14013, and 12140, being part of a 71.93 acre tract (parcel one) and part of a 279.56 acre tract (parcel three) both tracts conveyed to Glendale Stock Farms, Inc. Orelton Farms by Deed Book 165 page 291, and being more particularly described as follows:

Beginning at a point in the centerline of US Route 62 and State Route 3 (80 ft. right-of-way) said point being the southernmost corner of a 207.25 acre tract conveyed to Stump Property Group by Official Record 231 page 2016, said point also being the westernmost corner of a 32.47 acre tract also conveyed to Glendale Stock Farms, Inc. by Deed Book 165 page 291;

Thence, with the centerline of said US Route 62 and State Route 3, the following 3 courses:

- 1) South 37° 04 minutes 00 seconds West a distance a 536.74 ft.
- 2) with a curve to the right radius of 11,460.00 ft., arc length of 100.00 ft., chord bears South 37° 19 minutes 00 seconds West a chord length of 100.00 ft.
- 3) South 37° 34 minutes 00 seconds West a distance of 659.29 ft. to a mag nail previously set

Thence, with a new line across said 279.56 acre tract, South 52° 48 minutes 00 seconds East, passing an iron pin and cap previously set at 40.74 ft., a total distance of 860.08 feet to an iron pin and cap previously set at the northwest corner of a 64.3150 acre tract conveyed to Ronald W. Furness by Official Record 190 page 246;

Thence, with the west line of said 64.3150 acre tract, South 05° 34 minutes 30 seconds West, passing the northwest corner of said 71.93 acre tract at 24.42 ft., a total distance of 1438.82 ft. to an iron pin and cap set in the Fayette/Madison County line;

Thence, with said County line the following two courses:

- 1) North 84° 56 minutes 12 seconds West a distance of 3.69 ft. to a County stone found
- 2) North 84° 54 minutes 49 seconds West, passing an iron pin and cap set at 1858.76 ft., a total distance a 1905.25 ft. to a point in the centerline of said US Route 62 and State Route 3;

Thence, with the centerline of said US Route 62 and State Route 3, North 37° 08 minutes 00 seconds East a distance of 176.00 ft. corner to a 119.51 acre tract conveyed to Harley E. and Dorothy I. Ford, EtAl by Official Record 90 page 214;

Thence, with said 119.51 acre tract the following 3 courses:

- 1) North 30° 43 minutes 54 seconds West, passing an iron pin and cap set at 40.54 ft., a total distance of 586.94 ft. to an iron pin and cap set
- 2) North 70° 41 minutes 33 seconds West, passing the southeast line of the B&O Railroad at 521.10 ft., also passing the northwest line of said B&O Railroad at 585.57 ft., a total distance of a 1486.87 ft. to an iron pin and cap set
- 3) North 20° 19 minutes 42 seconds West a distance of 2017.12 ft. to a 1/2 inch diameter rebar and red plastic cap stamped "M. Clark R. L. S. 6808" found at the southeast corner of a 221.505 acre tract conveyed to Bowling Caldwell Partnership by Official Record 91 page 769

Thence, with said 221.505 acre tract, North 19° 52 minutes 51 seconds West a distance of 243.51 ft. to a 5 in. iron fence post filled with concrete found at the southwest corner of said 207.25 acre tract;

Thence, with said 207.25 acre tract the following 2 courses:

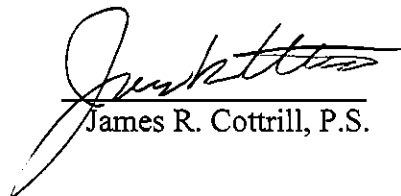
- 1) North 68° 04 minutes 12 seconds East a distance of 2878.02 feet to a 1/2 inch iron pipe found
- 2) South 50° 39 minutes 46 seconds East, passing the northwest line of the B&O Railroad at 1256.92 ft., also passing the southeast line of said B&O Railroad at 1317.00 ft., passing iron pin and caps set at 1325.08 and 2356.06 ft. , a total distance of 2395.75 ft. returning to the point beginning containing **298.2868 Acres** more or less, of which 47.5833 acres more or less is part of said 71.93 acre tract and 250.7035 acres more or less is part of said 279.56 acre tract.

Bearings are based on the centerline of US 62 and State Route 3 (North 37° 04 minutes East) as shown on ODOT right-of-way plans: MAD.CO. S.H. 50, SEC. N. sheet 2/3.

This deed is subject to and with the benefit of all legal highways, restrictions, easements, limitations, and reservations, of record, if any and to zoning restrictions which have been imposed thereon, if any.

All iron pins set are 5/8 inch diameter rebar with yellow plastic caps stamped "Cottrill LLC 6858."

This description is based on a field survey performed January 20, 2009 by James R. Cottrill registration #6858. (Job #S090101)


James R. Cottrill, P.S.



66.5514 Acre Tract
Surveyed for John Shilling

The following described 66.5514 acre tract is situated in the State of Ohio, Pleasant Township, VMS 12140, being all of a 32.47 acre tract (parcel two) and part of a 279.56 acre tract (parcel three) both tracts conveyed to Glendale Stock Farms, Inc. by deed book 165 page 291, and being more particularly described as follows:

Beginning at a point in the centerline of US Route 62 and State Route 3 (80 ft. right-of-way) said point being the westernmost corner of a 10.000 acre tract conveyed to Thurman R. Kehl by official record 40 page 723, said point also being the northernmost corner of said 32.47 acre tract;

Thence, with the southwest line of said 10.000 acre tract South 53° 34 minutes 54 seconds East, passing an iron pipe found at 40.21 ft., also passing an iron pin and cap previously set at the southwest corner of a 20.000 acre tract conveyed to the Village of Mount Sterling by official record 40 page 631 and continuing along the southwest line of said 20.000 acre tract a total distance of 1069.53 ft. to an iron pin cap set at the northwest corner of a 9.6640 acre tract conveyed to First Church of the Nazarene by official record 157 page 141;

Thence, with the northwest line of said 9.6640 acre tract, South 35° 46 minutes 35 seconds West a distance of 534.22 ft. to a 3/4 inch tee bar and cap found at the northwest corner of a 10.0003 acre tract conveyed to the First Church of the Nazarene by official record 158 page 839;

Thence, with the northwest line of said 10.0003 acre tract, South 35° 51 minutes 19 seconds West, passing a iron pin and cap previously set at the northwest corner of a 17.4197 acre tract conveyed to Diana J. and Susan D. Jones by deed book 274 page 715 at 471.93 ft., also passing the eastern corner common to said 32.47 acre tract and said 279.56 acre tract at 882.62 ft., also passing an iron pipe found at the northwest corner of an 18.000 acre tract conveyed to John and Susan Jones by official record 105 page five at 1002.74 ft., a total distance of 1965.68 ft. to an iron pipe found in the north line of a 34.2 acre tract conveyed to Norbert Furnace, trustee by official record 144 page 1252;

Thence, with the north line of said 34.2 acre tract, North 84° 30 minutes 13 seconds West a distance of 315.91 ft. to an iron pin and cap set at the northwest corner of said 34.2 acre tract;

Thence, with a new line across said 279.56 acre tract, North 52° 48 minutes 00 seconds West, passing an iron pin and cap set at 819.34 ft., a total distance of 860.08 ft. to a point in the centerline of said US Route 62 and State Route 3;

Thence, with said centerline the following three courses:

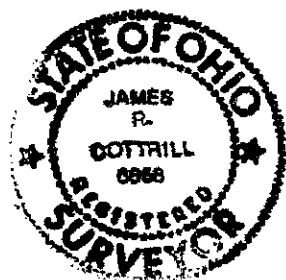
- 1) North 37° 34 minutes 00 seconds East a distance of 659.20 ft.
- 2) with a curve to the left said curve having a radius of 11,460.00 ft. and the length of said curve is 100.00 ft. the chord bears North 37° 19 minutes 00 seconds East a distance of 100.00 ft.
- 3) North 37° 04 minutes 00 seconds East, passing the westernmost corner of said 32.47 acre tract at 536.50 ft., a total distance of 1891.35 ft. returning to the point beginning containing 66.5514 acres more or less, of which 34.5094 acres more or less is all of said 32.47 acre tract and 32.0420 acres more or less is part of said 279.56 acre tract.

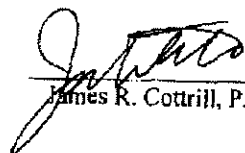
Bearings are based on the centerline of US 62 and State Route 3 (North 37° 04 minutes East) as shown on ODOT right-of-way plans: MAD.CO. S.H. 50, SEC. N. sheet 2/3.

This deed is subject to and with the benefit of all legal highways, restrictions, easements, limitations, and reservations, of record, if any and to zoning restrictions which have been imposed thereon, if any.

All iron pins set are 5/8 inch diameter rebar with yellow plastic caps stamped "Cottrill 6858."

This description is based on a field survey performed September 2, 2004 by James R. Cottrill registration #6858. (Job #S040807)




James R. Cottrill, P.S.