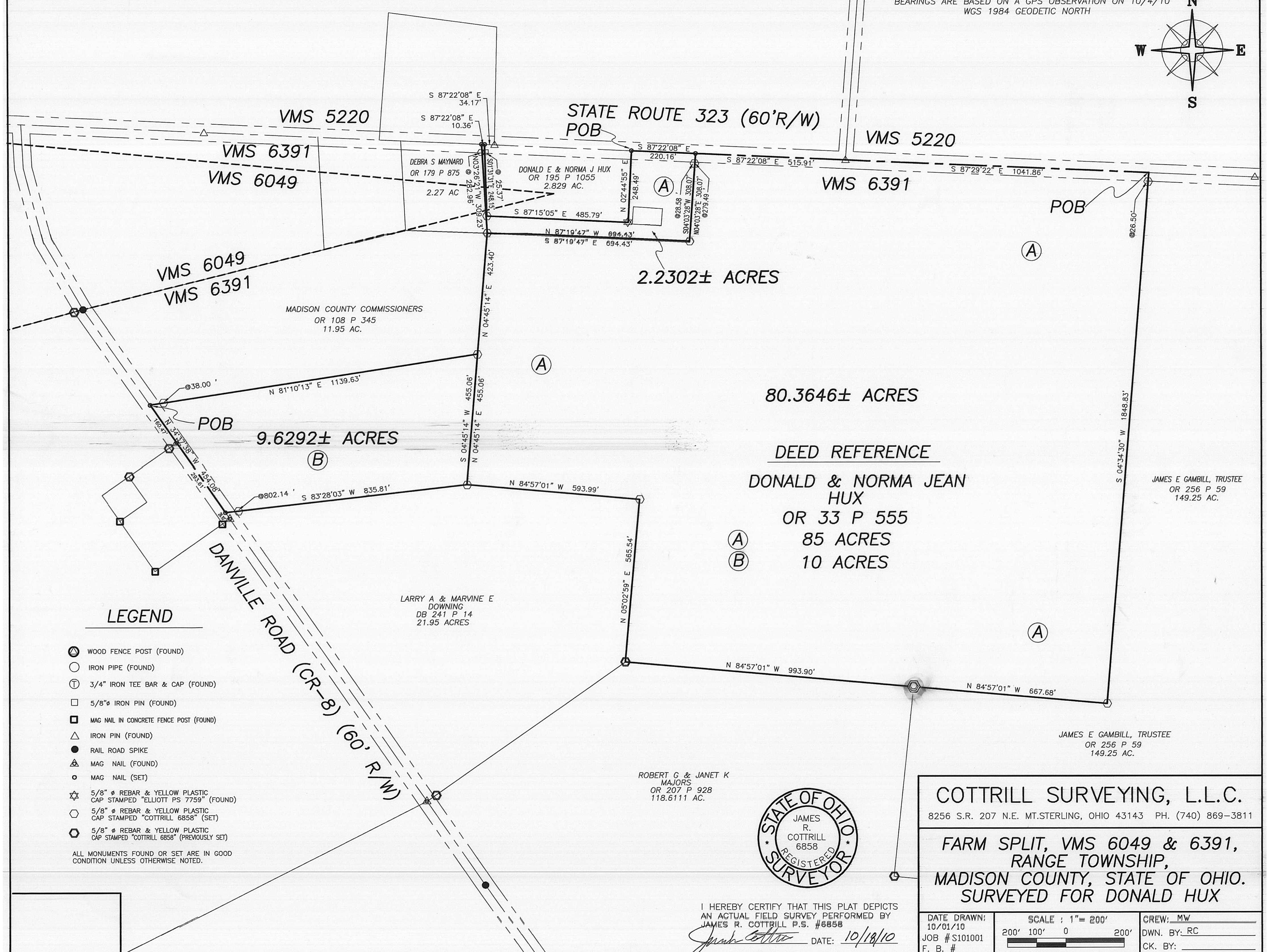
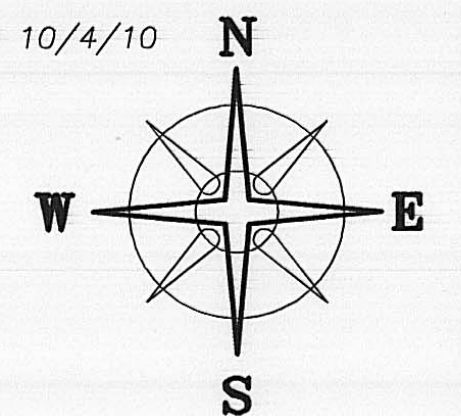


BEARINGS ARE BASED ON A GPS OBSERVATION ON 10/4/10
WGS 1984 GEODETIC NORTH



LEGEND

- ⊙ WOOD FENCE POST (FOUND)
- IRON PIPE (FOUND)
- ⊕ 3/4" IRON TEE BAR & CAP (FOUND)
- 5/8" IRON PIN (FOUND)
- MAG NAIL IN CONCRETE FENCE POST (FOUND)
- △ IRON PIN (FOUND)
- RAIL ROAD SPIKE
- ⊠ MAG NAIL (FOUND)
- MAG NAIL (SET)
- ☆ 5/8" ⌀ REBAR & YELLOW PLASTIC CAP STAMPED "ELLIOTT PS 7759" (FOUND)
- ⬡ 5/8" ⌀ REBAR & YELLOW PLASTIC CAP STAMPED "COTTRILL 6858" (SET)
- ⬢ 5/8" ⌀ REBAR & YELLOW PLASTIC CAP STAMPED "COTTRILL 6858" (PREVIOUSLY SET)

ALL MONUMENTS FOUND OR SET ARE IN GOOD CONDITION UNLESS OTHERWISE NOTED.



ROBERT G & JANET K MAJORS
OR 207 P 928
118.6111 AC.

I HEREBY CERTIFY THAT THIS PLAT DEPICTS AN ACTUAL FIELD SURVEY PERFORMED BY JAMES R. COTTRILL P.S. #6858
DATE: 10/18/10

80.3646± ACRES

DEED REFERENCE

DONALD & NORMA JEAN HUX
OR 33 P 555
85 ACRES
10 ACRES

9.6292± ACRES

VMS 5220

VMS 6391

VMS 6049

STATE ROUTE 323 (60'R/W)
POB

VMS 5220

VMS 6391

POB

MADISON COUNTY COMMISSIONERS
OR 108 P 345
11.95 AC.

DEBRA S MAYNARD
OR 179 P 875
2.27 AC

DONALD E & NORMA J HUX
OR 195 P 1055
2.829 AC.

2.2302± ACRES

JAMES E GAMBILL, TRUSTEE
OR 256 P 59
149.25 AC.

LARRY A & MARVINE E DOWNING
DB 241 P 14
21.95 ACRES

JAMES E GAMBILL, TRUSTEE
OR 256 P 59
149.25 AC.

COTTRILL SURVEYING, L.L.C.
8256 S.R. 207 N.E. MT. STERLING, OHIO 43143 PH. (740) 869-3811

**FARM SPLIT, VMS 6049 & 6391,
RANGE TOWNSHIP,
MADISON COUNTY, STATE OF OHIO.
SURVEYED FOR DONALD HUX**

DATE DRAWN: 10/01/10	SCALE : 1" = 200' 200' 100' 0 200'	CREW: MW
JOB # S101001		DWN. BY: RC
F. B. #		CK. BY:

2.2302 Acre Tract
Surveyed for Donald Hux

The following described 2.2302 acre tract is situated in the State of Ohio, Madison County, Range Township, VMS 6049 & 6391, being part of a 85 acre tract conveyed to Donald and Norma Jean Hux by Official Record 33 page 555, and being more particularly described as follows:

Beginning at a mag nail set in the centerline of State Route 323 (60 ft. right-of-way), said point is at the northeast corner of a 2.829 acre tract conveyed to Donald and Norma Jean Hux by Official Record 195 page 1055;

Thence, with the centerline of said State Route 323, South 87° 22 minutes 08 seconds East a distance of 220.16 ft. to a mag nail set in said centerline;

Thence, across said 85 acre tract the following 2 new courses:

- 1) South 04° 03 minutes 28 seconds West, passing an iron pin and cap set at 28.50 ft., a total distance of 308.07 ft. to an iron pin and cap set
- 2) North 87° 19 minutes 47 seconds West a distance of 694.43 ft. to an iron pin and cap set at the northeast corner of a 11.95 acre tract conveyed to the Madison County Commissioners by Official Record 108 page 345 and the southeast corner of a 2.27 acre tract conveyed to Debra S. Maynard by Official Record 179 paid 875;

Thence, with the east line of said 2.27 acre tract, North 03° 26 minutes 21 seconds West, passing an iron pin and cap set at 282.96 ft., a total distance about 309.23 ft. to a mag nail set at the northeast corner of said 2.27 acre tract and in the centerline of State Route 323;

Thence, with the centerline of said State Route 323, South 87° 22 minutes 08 seconds East a distance of 10.36 ft. to a mag nail set at the northwest corner of said 2.829 acre tract;

Thence, with said 2.829 acre tract the following 3 courses:

- 1) South 01 degree 31 minutes 31 seconds East, passing a 5/8 inch diameter iron pin found at 25.37 ft., a total distance of 248.15 ft. to an iron pin and cap set
- 2) South 87° 15 minutes 05 seconds East a distance of 485.79 ft. to an iron pin and yellow Stamped "Elliott P. S. 7759" found
- 3) North 02° 44 minutes 55 seconds East a distance of 248.49 ft. returning to the point beginning containing **2.2302 Acres** more or less.

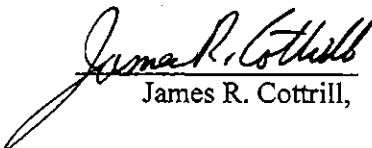
Bearings are based on a GPS observation on October 4, 2010, WGS 1984 Geodetic North.

This deed is subject to and with the benefit of all legal highways, restrictions, easements, limitations, and reservations, of record, if any and to zoning restrictions which have been imposed thereon, if any.

All iron pins set are 5/8 inch diameter rebar with yellow plastic caps stamped "Cottrill L.L.C. 6858."

This description is based on a field survey performed October 4, 2010 by James R. Cottrill registration #6858. (Job #S101001B)




James R. Cottrill,

9.6292 Acre Tract
Surveyed for Donald Hux

The following described 9.6292 acre tract is situated in the State of Ohio, Madison County, Range Township, VMS 6391, being all of a 10 acre tract conveyed to Donald and Norma Jean Hux by Official Record 33 page 555, and being more particularly described as follows:

Beginning at a mag nail set in the centerline of Danville Road (County Road 8)(60 ft. right-of-way), said mag nail is at the northwest corner of a 21.95 acre tract conveyed to Larry A. and Marvine E. Downing by Deed Book 241 page 14, said mag nail is also the southwest corner of said 10 acre tract;

Thence, with the centerline of said Danville Road, North 34° 37 minutes 38 seconds West a distance of 454.08 ft. to a mag nail set at the southwest corner of an 11.95 acre tract conveyed to Madison County Commissioners by Official Record 108 page 345;

Thence, with the south line of said 11.95 acre tract, North 81° 10 minutes 13 seconds East, passing an iron pin and cap set at 38.00 ft., a total distance of 1139.63 ft. to an iron pin and cap set in the west line of an 85 acre tract also conveyed to Donald and Norma Jean Hux by Official Record 33 page 555;

Thence, with the west line of said 85 acre tract, South 04° 45 minutes 14 seconds West a distance of 455.06 ft. to an iron pin and cap set in the north line of said Downing's 21.95 acre tract;

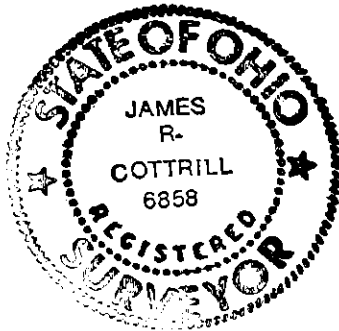
Thence, with the north line of said 21.95 acre tract, South 83° 28 minutes 03 seconds West, passing an iron pin and cap set at 802.14 ft., a total distance of 835.81 ft. returning to the point beginning containing **9.6292 Acres** more or less.

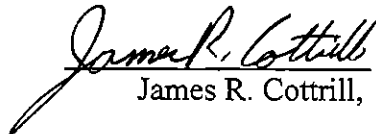
Bearings are based on a GPS observation on October 4, 2010, WGS 1984 Geodetic North.

This deed is subject to and with the benefit of all legal highways, restrictions, easements, limitations, and reservations, of record, if any and to zoning restrictions which have been imposed thereon, if any.

All iron pins set are 5/8 inch diameter rebar with yellow plastic caps stamped "Cottrill L.L.C. 6858."

This description is based on a field survey performed October 4, 2010 by James R. Cottrill registration #6858. (Job #S101001)




James R. Cottrill,

80.3646 Acre Tract
Surveyed for Donald Hux

The following described 80.3646 acre tract is situated in the State of Ohio, Madison County, Range Township, VMS 6391, being part of a 85 acre tract conveyed to Donald and Norma Jean Hux by Official Record 33 page 555, and being more particularly described as follows:

Beginning at a point in the centerline of State Route 323 (60 ft. right-of-way), said point is at the northeast corner of said 85 acre tract and the northwest corner of a 149.25 acre tract conveyed to James E. Gamble, Trustee by Official Record 256 page 59;

Thence, with the said 149.25 acre tract, the following two courses:

- 1) South 04° 34 minutes 30 seconds West, passing an iron pin and cap set at 26.50 ft., a total distance of 1848.83 ft. to an iron pin and cap set
- 2) North 84° 57 minutes 01 seconds West a distance of 667.68 ft. to an iron pin and cap previously set at the northeast corner of a 118.6111 acre tract conveyed to Robert G. and Janet K. Majors by Official Record 207 page 928;

Thence, with the north line of said 118.6111 acre tract, North 84° 57 minutes 01 seconds West a distance of 993.90 ft. to an iron pin and cap previously set at the south east corner of a 21.95 acre tract conveyed to Larry A. and Marvine E. Downing by Deed Book 241 page 14;

Thence, with said 21.95 acre tract, the following 2 courses:

- 1) North 05° 02 minutes 59 seconds East a distance of 565.54 ft. to an iron pin and cap set
- 2) North 84° 57 minutes 01 seconds West a distance of 593.99 ft. to an iron pin and cap set at the southeast corner of a 10 acre tract also conveyed to Donald and Norma Jean Hux by Official Record 33 page 555;

Thence, with the east line of said 10 acre tract, North 04° 45 minutes 14 seconds East a distance of 455.06 ft. to an iron pin and cap set at the southeast corner of a 11.95 acre tract conveyed to the Madison County Commissioners by Official Record 108 page 345;

Thence, with the east line of said 11.95 acre tract, North 04° 45 minutes 14 seconds East a distance of 423.40 ft. to an iron pin and cap set at the southeast corner of a 2.27 acre tract conveyed to Debra S. Maynard by Official Record 179 paid 875;

Thence, across said 85 acre tract the following 2 new courses:

- 1) South 87° 19 minutes 47 seconds East a distance of 694.43 ft. to an iron pin and cap set
- 2) North 04° 03 minutes 28 seconds East, passing an iron pin and cap set at 279.49 ft., a total distance of 308.07 ft. to a mag nail set in the centerline of said State Route 323;

Thence, with the centerline of said State Route 323, the following two courses:

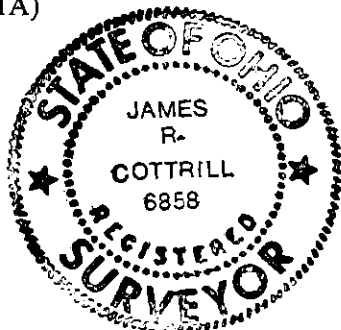
- 1) South 87° 22 minutes 08 seconds East a distance of 515.91 ft. to an iron pin found
- 2) South 87° 29 minutes 22 seconds East a distance of 1041.86 ft. returning to the point beginning containing **80.3646 Acres** more or less.

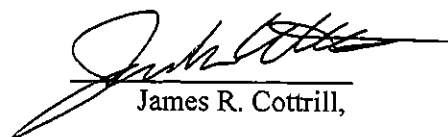
Bearings are based on a GPS observation on October 4, 2010, WGS 1984 Geodetic North.

This deed is subject to and with the benefit of all legal highways, restrictions, easements, limitations, and reservations, of record, if any and to zoning restrictions which have been imposed thereon, if any.

All iron pins set are 5/8 inch diameter rebar with yellow plastic caps stamped "Cottrill L.L.C. 6858."

This description is based on a field survey performed October 4, 2010 by James R. Cottrill registration #6858. (Job #S101001A)




James R. Cottrill,