

BEARINGS ARE BASED UPON THE GRID AZIMUTH (AZ 276° 10' 13.0") BETWEEN NATIONAL GEODETIC SURVEY MONUMENTS "A 38 RESET" AND "CHP OUT" AND DERIVED FROM GPS OBSERVATIONS TAKEN NOVEMBER 11, 2010, UTILIZING THE TRIMBLE ODOT CORRS VRS (VIRTUAL REFERENCE SYSTEM).

NATIONAL GEODETIC SURVEY CONTROL MONUMENTS						
NAME	NAD 83 (NRS2007)	ELLIPSOID	OHIO STATE PLANE COORDINATES NAVD 88			
MADISON COUNTY CORRS (OHMD)	39°52'28.79984"N 83°28'45.11284"W	988.501	684287.174	1693676.986	1096.081	
UNION COUNTY CORRS (OHUN)	40°13'58.84907"N 83°21'39.07501"W	917.511	814485.637	1728134.961	1027.505	
CHP OUT	40°07'21.47121"N 83°32'01.86373"W	970.693	774781.623	1679372.838	1079.722	
A 38 RESET	40°06'43.26530"N 83°23'30.59335"W	874.066	770492.081	1719050.498	983.265	
VAN NESS (2001)	40°06'01.62578"N 83°30'38.22321"W	921.377	766626.939	1685935.029	1030.478	

SITE BASE STATION "VAN NESS (2001)" LOCAL SITE SETTINGS						
GROUND SCALE FACTOR:	1.000030002	LOCAL GROUND COORDINATES	NAVD 88			
GEOID MODEL:	GEOD03 (CONUS)	NORTHING	EASTING	ELEVATION		
		766626.939	1685935.029	1030.478		
		UNITS ARE IN U.S. SURVEY FEET (SFT)				

JOSHUA L. COOK, ET UX
O.R. 420, PAGE 1403
1.736 Ac.

KENNETH L. HANNAH, ET AL
O.R. 174, PAGE 580
ORIG. 8,018 Ac.

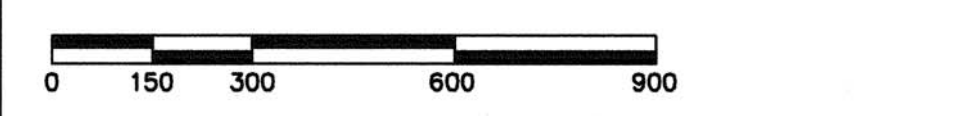
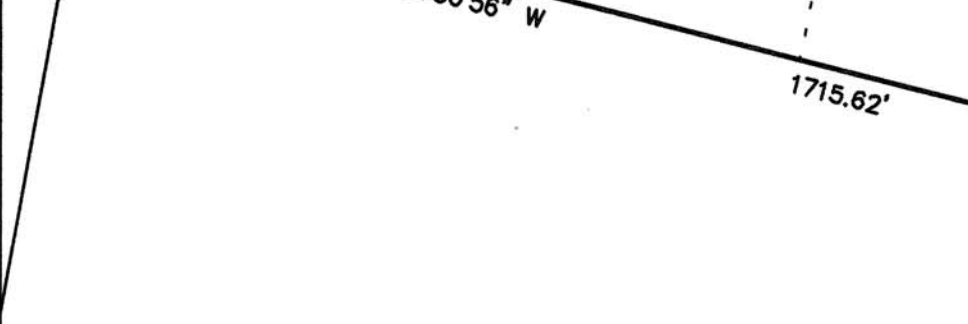
LINDA L. MCGUIRE
O.R. 17, PAGE 982
ORIG. 119.06 Ac.

61.525 Ac.
(2.788 Ac. IN S.R. 4 ROAD R/W C.C.)
(29.308 Ac. IN V.M.S. No. 5751)
(32.217 Ac. IN V.M.S. No. 5444)

DAYTON POWER AND LIGHT COMPANY
D.B. 185, PAGE 196 (C.C.)
FORMERLY THE DELAWARE BRANCH
CLEVELAND, CINCINNATI, CHICAGO
AND ST. LOUIS RAILWAY COMPANY
AND THE NEW YORK CENTRAL
RAILROAD COMPANY
11.74 MILES

- LEGEND**
- 5/8" IRON PIN (SET) WITH PLASTIC CAP STAMPED "McCARTY ASSOCIATES"
 - 5/8" IRON PIN (FOUND)
 - P.K. NAIL (FOUND)
 - MAG NAIL (SET)
 - SPIKE (FOUND)
 - ⊠ SPIKE (FOUND) UNDER THE PAVEMENT
 - ⊠ RAILROAD SPIKE (SET)
 - ⊠ RAILROAD SPIKE (FOUND)
 - 3/4" IRON PIPE (FOUND)
 - MAG NAIL (FOUND)
 - 1/2" IRON PIPE (FOUND)
 - 1" IRON PIPE (FOUND)
 - ⊠ CONCRETE RIGHT-OF-WAY MONUMENT (FOUND)
 - ▲ McCARTY ASSOCIATES GEODETIC SURVEY MONUMENT "VAN NESS 2001", 3/8" IRON PIN (SET) WITH PLASTIC CAP STAMPED McCARTY TRAVERSE.
 - WOVEN WIRE FENCE GENERALLY ON OR NEAR LINE UNLESS OTHERWISE SHOWN.
 - - - V.M.S. LINE
 - - - TRACT LINE
 - (C.C.) CHAMPAIGN COUNTY
 - (M.C.) MADISON COUNTY

PARCEL No. 1
No. 1
ORIG. 204 Ac.



MATINA K. LAGOS
O.R. 461, PAGE 3085
TRACT I
58.745 Ac.

MATINA K. LAGOS
O.R. 461, PAGE 3085
TRACT II
4.475 Ac.

JAMES A. LONG AND CHARLOTTE S. LONG, TRUSTEES
O.R. 300, PAGE 602
TRACT I
160.073 Ac.

LLOYD E. WILLIS, ET UX
O.R. 465, PAGE 2546
10.00 Ac.

PARCEL No. 1
No. 2
203 1/2 Ac.
(18.166 Ac.)

PARCEL No. 1
No. 1
ORIG. 204 Ac.

PARCEL No. 1
No. 1
ORIG. 204 Ac.

PARCEL No. 1
No. 1
ORIG. 204 Ac.

752.813 Ac.
(1,367 Ac. IN VAN NESS ROAD R/W C.C.)
(0.017 Ac. IN IRWIN ROAD R/W M.C.)
(50.153 Ac. IN V.M.S. No. 4199)
(131.174 Ac. IN V.M.S. No. 4749)
(2,426 Ac. IN V.M.S. No. 5645)
(221,890 Ac. IN V.M.S. No. 4750)
(4,862 Ac. IN V.M.S. No. 4942)
(58,998 Ac. IN V.M.S. No. 5444)
(30,022 Ac. IN V.M.S. No. 5751)
(253,288 Ac. IN V.M.S. No. 5862)

PARCEL No. 1
No. 2
ORIG. 203 1/2 Ac.
(196.988 Ac.)

PARCEL No. 1
No. 1
ORIG. 204 Ac.

PARCEL No. 1
No. 1
ORIG. 204 Ac.

PARCEL No. 1
No. 1
ORIG. 204 Ac.

NOTES
THE ABOVE LISTED DEED REFERENCES WERE USED AS A BASIS FOR CARRYING OUT THE WORK.
NO EVIDENCE OF OCCUPATION EXISTS ALONG PROPERTY LINES INDICATED BY SOLID LINES.
ALL MONUMENTS FOUND OR SET ARE IN GOOD CONDITION UNLESS OTHERWISE INDICATED.

RUFUS R. HOOVER AND KATIE H. HOOVER, TRUSTEES
O.R. 329, PAGE 156
2.981 Ac.

BARBARA E. GRAY
O.R. 455, PAGE 1189
ORIG. 400 Ac.

GWENDOLYN S. SCHEIDERER, ET AL
O.R. 455, PAGE 110
ORIG. 107.003 Ac.

GWENDOLYN S. SCHEIDERER, ET AL
O.R. 455, PAGE 110
ORIG. 107.003 Ac.

PARCEL No. 2
TRACT I
ORIG. 53.53 Ac.
(16.474 Ac.)

PARCEL No. 2
TRACT I
ORIG. 53.53 Ac.
(16.474 Ac.)

PARCEL No. 2
TRACT I
ORIG. 53.53 Ac.
(16.474 Ac.)

PARCEL No. 2
TRACT I
ORIG. 53.53 Ac.
(16.474 Ac.)

PARCEL No. 2
TRACT I
ORIG. 53.53 Ac.
(16.474 Ac.)

PARCEL No. 2
TRACT I
ORIG. 53.53 Ac.
(16.474 Ac.)

PARCEL No. 2
TRACT I
ORIG. 53.53 Ac.
(16.474 Ac.)

PARCEL No. 2
TRACT I
ORIG. 53.53 Ac.
(16.474 Ac.)

PARCEL No. 2
TRACT I
ORIG. 53.53 Ac.
(16.474 Ac.)

PARCEL No. 2
TRACT I
ORIG. 53.53 Ac.
(16.474 Ac.)

PARCEL No. 2
TRACT I
ORIG. 53.53 Ac.
(16.474 Ac.)

ROBERT W. DENUNE, TRUSTEE
O.R. 343, PAGE 283
TRACT TWO
ORIG. 275 3/4 Ac.

JOHN C. YATES, ET AL
O.R. 451, PAGE 2445
TRACT II
ORIG. 30 1/2 Ac.

JOHN C. YATES, ET AL
O.R. 451, PAGE 2445
TRACT II
ORIG. 30 1/2 Ac.

JOHN C. YATES, ET AL
O.R. 451, PAGE 2445
TRACT II
ORIG. 30 1/2 Ac.

JOHN C. YATES, ET AL
O.R. 451, PAGE 2445
TRACT II
ORIG. 30 1/2 Ac.

JOHN C. YATES, ET AL
O.R. 451, PAGE 2445
TRACT II
ORIG. 30 1/2 Ac.

JOHN C. YATES, ET AL
O.R. 451, PAGE 2445
TRACT II
ORIG. 30 1/2 Ac.

JOHN C. YATES, ET AL
O.R. 451, PAGE 2445
TRACT II
ORIG. 30 1/2 Ac.

JOHN C. YATES, ET AL
O.R. 451, PAGE 2445
TRACT II
ORIG. 30 1/2 Ac.

JOHN C. YATES, ET AL
O.R. 451, PAGE 2445
TRACT II
ORIG. 30 1/2 Ac.

JOHN C. YATES, ET AL
O.R. 451, PAGE 2445
TRACT II
ORIG. 30 1/2 Ac.

JOHN C. YATES, ET AL
O.R. 451, PAGE 2445
TRACT II
ORIG. 30 1/2 Ac.

JOHN C. YATES, ET AL
O.R. 451, PAGE 2445
TRACT II
ORIG. 30 1/2 Ac.

JOHN C. YATES, ET AL
O.R. 451, PAGE 2445
TRACT II
ORIG. 30 1/2 Ac.

JOHN C. YATES, ET AL
O.R. 451, PAGE 2445
TRACT II
ORIG. 30 1/2 Ac.

JOHN C. YATES, ET AL
O.R. 451, PAGE 2445
TRACT II
ORIG. 30 1/2 Ac.

L. LEROY BLAZER AND MARY PAULINE BLAZER, TRUSTEES
O.R. 231, PAGE 990
TRACT V
8.530 Ac.

L. LEROY BLAZER, ET UX 32% AND ET AL 68% TRUSTEES
O.R. 451, PAGE 2445
TRACT II
ORIG. 30 1/2 Ac.

L. LEROY BLAZER, ET UX 32% AND ET AL 68% TRUSTEES
O.R. 451, PAGE 2445
TRACT II
ORIG. 30 1/2 Ac.

L. LEROY BLAZER, ET UX 32% AND ET AL 68% TRUSTEES
O.R. 451, PAGE 2445
TRACT II
ORIG. 30 1/2 Ac.

L. LEROY BLAZER, ET UX 32% AND ET AL 68% TRUSTEES
O.R. 451, PAGE 2445
TRACT II
ORIG. 30 1/2 Ac.

L. LEROY BLAZER, ET UX 32% AND ET AL 68% TRUSTEES
O.R. 451, PAGE 2445
TRACT II
ORIG. 30 1/2 Ac.

L. LEROY BLAZER, ET UX 32% AND ET AL 68% TRUSTEES
O.R. 451, PAGE 2445
TRACT II
ORIG. 30 1/2 Ac.

L. LEROY BLAZER, ET UX 32% AND ET AL 68% TRUSTEES
O.R. 451, PAGE 2445
TRACT II
ORIG. 30 1/2 Ac.

L. LEROY BLAZER, ET UX 32% AND ET AL 68% TRUSTEES
O.R. 451, PAGE 2445
TRACT II
ORIG. 30 1/2 Ac.

L. LEROY BLAZER, ET UX 32% AND ET AL 68% TRUSTEES
O.R. 451, PAGE 2445
TRACT II
ORIG. 30 1/2 Ac.

L. LEROY BLAZER, ET UX 32% AND ET AL 68% TRUSTEES
O.R. 451, PAGE 2445
TRACT II
ORIG. 30 1/2 Ac.

L. LEROY BLAZER, ET UX 32% AND ET AL 68% TRUSTEES
O.R. 451, PAGE 2445
TRACT II
ORIG. 30 1/2 Ac.

L. LEROY BLAZER, ET UX 32% AND ET AL 68% TRUSTEES
O.R. 451, PAGE 2445
TRACT II
ORIG. 30 1/2 Ac.

L. LEROY BLAZER, ET UX 32% AND ET AL 68% TRUSTEES
O.R. 451, PAGE 2445
TRACT II
ORIG. 30 1/2 Ac.

L. LEROY BLAZER, ET UX 32% AND ET AL 68% TRUSTEES
O.R. 451, PAGE 2445
TRACT II
ORIG. 30 1/2 Ac.

L. LEROY BLAZER, ET UX 32% AND ET AL 68% TRUSTEES
O.R. 451, PAGE 2445
TRACT II
ORIG. 30 1/2 Ac.

L. LEROY BLAZER, ET UX 32% AND ET AL 68% TRUSTEES
O.R. 451, PAGE 2445
TRACT II
ORIG. 30 1/2 Ac.

L. LEROY BLAZER, ET UX 32% AND ET AL 68% TRUSTEES
O.R. 451, PAGE 2445
TRACT II
ORIG. 30 1/2 Ac.

L. LEROY BLAZER, ET UX 32% AND ET AL 68% TRUSTEES
O.R. 451, PAGE 2445
TRACT II
ORIG. 30 1/2 Ac.

L. LEROY BLAZER, ET UX 32% AND ET AL 68% TRUSTEES
O.R. 451, PAGE 2445
TRACT II
ORIG. 30 1/2 Ac.

L. LEROY BLAZER, ET UX 32% AND ET AL 68% TRUSTEES
O.R. 451, PAGE 2445
TRACT II
ORIG. 30 1/2 Ac.

L. LEROY BLAZER, ET UX 32% AND ET AL 68% TRUSTEES
O.R. 451, PAGE 2445
TRACT II
ORIG. 30 1/2 Ac.

L. LEROY BLAZER, ET UX 32% AND ET AL 68% TRUSTEES
O.R. 451, PAGE 2445
TRACT II
ORIG. 30 1/2 Ac.

L. LEROY BLAZER, ET UX 32% AND ET AL 68% TRUSTEES
O.R. 451, PAGE 2445
TRACT II
ORIG. 30 1/2 Ac.

L. LEROY BLAZER, ET UX 32% AND ET AL 68% TRUSTEES
O.R. 451, PAGE 2445
TRACT II
ORIG. 30 1/2 Ac.

L. LEROY BLAZER, ET UX 32% AND ET AL 68% TRUSTEES
O.R. 451, PAGE 2445
TRACT II
ORIG. 30 1/2 Ac.

L. LEROY BLAZER, ET UX 32% AND ET AL 68% TRUSTEES
O.R. 451, PAGE 2445
TRACT II
ORIG. 30 1/2 Ac.

L. LEROY BLAZER, ET UX 32% AND ET AL 68% TRUSTEES
O.R. 451, PAGE 2445
TRACT II
ORIG. 30 1/2 Ac.

L. LEROY BLAZER, ET UX 32% AND ET AL 68% TRUSTEES
O.R. 451, PAGE 2445
TRACT II
ORIG. 30 1/2 Ac.

L. LEROY BLAZER, ET UX 32% AND ET AL 68% TRUSTEES
O.R. 451, PAGE 2445
TRACT II
ORIG. 30 1/2 Ac.

L. LEROY BLAZER, ET UX 32% AND ET AL 68% TRUSTEES
O.R. 451, PAGE 2445
TRACT II
ORIG. 30 1/2 Ac.

L. LEROY BLAZER, ET UX 32% AND ET AL 68% TRUSTEES
O.R. 451, PAGE 2445
TRACT II
ORIG. 30 1/2 Ac.

L. LEROY BLAZER, ET UX 32% AND ET AL 68% TRUSTEES
O.R. 451, PAGE 2445
TRACT II
ORIG. 30 1/2 Ac.

L. LEROY BLAZER, ET UX 32% AND ET AL 68% TRUSTEES
O.R. 451, PAGE 2445
TRACT II
ORIG. 30 1/2 Ac.

L. LEROY BLAZER, ET UX 32% AND ET AL 68% TRUSTEES
O.R. 451, PAGE 2445
TRACT II
ORIG. 30 1/2 Ac.

L. LEROY BLAZER, ET UX 32% AND ET AL 68% TRUSTEES
O.R. 451, PAGE 2445
TRACT II
ORIG. 30 1/2 Ac.

L. LEROY BLAZER, ET UX 32% AND ET AL 68% TRUSTEES
O.R. 451, PAGE 2445
TRACT II
ORIG. 30 1/2 Ac.

L. LEROY BLAZER, ET UX 32% AND ET AL 68% TRUSTEES
O.R. 451, PAGE 2445
TRACT II
ORIG. 30 1/2 Ac.

L. LEROY BLAZER, ET UX 32% AND ET AL 68% TRUSTEES
O.R. 451, PAGE 2445
TRACT II
ORIG. 30 1/2 Ac.

L. LEROY BLAZER, ET UX 32% AND ET AL 68% TRUSTEES
O.R. 451, PAGE 2445
TRACT II
ORIG. 30 1/2 Ac.

L. LEROY BLAZER, ET UX 32% AND ET AL 68% TRUSTEES
O.R. 451, PAGE 2445
TRACT II
ORIG. 30 1/2 Ac.

L. LEROY BLAZER, ET UX 32% AND ET AL 68% TRUSTEES
O.R. 451, PAGE 2445
TRACT II
ORIG. 30 1/2 Ac.

L. LEROY BLAZER, ET UX 32% AND ET AL 68% TRUSTEES
O.R. 451, PAGE 2445
TRACT II
ORIG. 30 1/2 Ac.

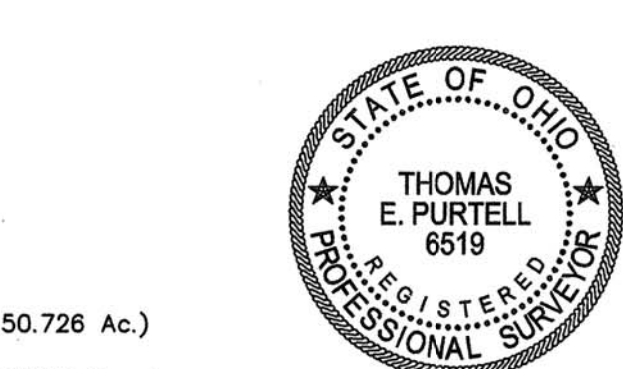
L. LEROY BLAZER, ET UX 32% AND ET AL 68% TRUSTEES
O.R. 451, PAGE 2445
TRACT II
ORIG. 30 1/2 Ac.

L. LEROY BLAZER, ET UX 32% AND ET AL 68% TRUSTEES
O.R. 451, PAGE 2445
TRACT II
ORIG. 30 1/2 Ac.

L. LEROY BLAZER, ET UX 32% AND ET AL 68% TRUSTEES
O.R. 451, PAGE 2445
TRACT II
ORIG. 30 1/2 Ac.

L. LEROY BLAZER, ET UX 32% AND ET AL 68% TRUSTEES
O.R. 451, PAGE 2445
TRACT II
ORIG. 30 1/2 Ac.

L. LEROY BLAZER, ET UX 32% AND ET AL 68% TRUSTEES
O.R. 451, PAGE 2445
TRACT II
ORIG. 30 1/2 Ac.



I HEREBY CERTIFY THIS TO BE A PLAT OF A SURVEY MADE UNDER MY DIRECTION IN NOVEMBER, 2010.
Thomas E. Purcell
THOMAS E. PURCELL, P. S. 6519

201.816 Ac.
(1.894 Ac. IN S.R. 4 ROAD R/W)
(2.694 Ac. IN VAN NESS ROAD R/W)
(201.816 Ac. IN V.M.S. No. 5862)

PARCEL No. 5
TRACT I
ORIG. 300 Ac.
(185.342 Ac.)

PARCEL No. 2
TRACT III
ORIG. 53.53 Ac.
(16.474 Ac.)

PARCEL No. 2
TRACT III
ORIG. 53.53 Ac.
(16.474 Ac.)

PARCEL No. 2
TRACT III
ORIG. 53.53 Ac.
(16.474 Ac.)

PARCEL No. 2
TRACT III
ORIG. 53.53 Ac.
(16.474 Ac.)

PARCEL No. 2
TRACT III
ORIG. 53.53 Ac.
(16.474 Ac.)

PARCEL No. 2
TRACT III
ORIG. 53.53 Ac.
(16.474 Ac.)

PARCEL No. 2
TRACT III
ORIG. 53.53 Ac.
(16.474 Ac.)

PARCEL No. 2
TRACT III
ORIG. 53.53 Ac.
(16.474 Ac.)

PARCEL No. 2
TRACT III
ORIG. 53.53 Ac.
(16.474 Ac.)

PARCEL No. 2
TRACT III
ORIG. 53.53 Ac.
(16.474 Ac.)

PARCEL No. 2
TRACT III
ORIG. 53.53 Ac.
(16.474 Ac.)

PARCEL No. 2
TRACT III
ORIG. 53.53 Ac.
(16.474 Ac.)

PARCEL No. 2
TRACT III
ORIG. 53.53 Ac.
(16.474 Ac.)

PARCEL No. 2
TRACT III
ORIG. 53.53 Ac.
(16.474 Ac.)

SHANNON FARMS, INC.
D.B. 281, PAGE 400 (M.C.)
O.R. 52, PAGE 860 (C.C.)
EIGHTH TRACT
5.33 Ac.

SHANNON FARMS, INC.
D.B. 281, PAGE 400 (M.C.)
O.R. 52, PAGE 860 (C.C.)
EIGHTH TRACT
5.33 Ac.

SHANNON FARMS, INC.
D.B. 281, PAGE 400 (M.C.)
O.R. 52, PAGE 860 (C.C.)
EIGHTH TRACT
5.33 Ac.

SHANNON FARMS, INC.
D.B. 281, PAGE 400 (M.C.)
O.R. 52, PAGE 860 (C.C.)
EIGHTH TRACT
5.33 Ac.

SHANNON FARMS, INC.
D.B. 281, PAGE 400 (M.C.)
O.R. 52, PAGE 860 (C.C.)
EIGHTH TRACT
5.33 Ac.

SHANNON FARMS, INC.
D.B. 281, PAGE 400 (M.C.)
O.R. 52, PAGE 860 (C.C.)
EIGHTH TRACT
5.33 Ac.

SHANNON FARMS, INC.
D.B. 281, PAGE 400 (M.C.)
O.R. 52, PAGE 860 (C.C.)
EIGHTH TRACT
5.33 Ac.

SHANN

61.525 Ac.

(2.788 Ac. IN S.R. 4 ROAD R/W C.C.)
(29.308 Ac. IN V.M.S. No. 5751)
(32.217 Ac. IN V.M.S. No. 5444)

BEARINGS ARE BASED UPON THE GRID AZIMUTH (AZ 276° 10' 13.0") BETWEEN NATIONAL GEODETIC SURVEY MONUMENTS - A 39 RESET AND -CHP OUT- AND DERIVED FROM GPS OBSERVATIONS TAKEN NOVEMBER 11, 2010, UTILIZING THE TRIMBLE ODOT CORRS VRS (VIRTUAL REFERENCE SYSTEM).

DAYTON POWER AND LIGHT COMPANY
D.B. 185, PAGE 196 (C.C.)
FORMERLY THE DELAWARE BRANCH CLEVELAND, CINCINNATI, CHICAGO AND ST. LOUIS RAILWAY COMPANY AND THE NEW YORK CENTRAL RAILROAD COMPANY
11.74 MILES

SUBJECT TO A PERPETUAL EASEMENT AND RIGHT-OF-WAY FOR ROAD PURPOSES CONVEYED TO THE STATE OF OHIO IN O.R. 152, PAGE 553 (CONTAINS 0.464 Ac.)

DAYTON POWER AND LIGHT COMPANY
D.B. 185, PAGE 196 (C.C.)
FORMERLY THE DELAWARE BRANCH CLEVELAND, CINCINNATI, CHICAGO AND ST. LOUIS RAILWAY COMPANY AND THE NEW YORK CENTRAL RAILROAD COMPANY
11.74 MILES

752.813 Ac.

(1.367 Ac. IN VAN NESS ROAD R/W C.C.)
(0.017 Ac. IN IRWIN ROAD R/W M.C.)
(50.153 Ac. IN V.M.S. No. 4199)
(131.174 Ac. IN V.M.S. No. 4749)
(2.426 Ac. IN V.M.S. No. 5645)
(221.890 Ac. IN V.M.S. No. 4750)
(4.862 Ac. IN V.M.S. No. 4942)
(58.998 Ac. IN V.M.S. No. 5444)
(30.022 Ac. IN V.M.S. No. 5751)
(253.288 Ac. IN V.M.S. No. 5862)

SHANNON FARMS, INC.
D.B. 281, PAGE 400 (M.C.)
O.R. 52, PAGE 860 (C.C.)
SEVENTH TRACT
1.56 Ac.

SHANNON FARMS, INC.
D.B. 281, PAGE 400 (M.C.)
O.R. 52, PAGE 860 (C.C.)
SIXTH TRACT
ORIG. 10 Ac., 150 P.

PARCEL No. 5
TRACT III
0.51 Ac.

DA L. MCGUIRE
17, PAGE 982 (C.C.)
ORIG. 119.06 Ac.

PARCEL No. 1
No. 1
ORIG. 204 Ac.

PARCEL No. 1
No. 2
ORIG. 203 1/2 Ac.
(196.988 Ac.)

PARCEL No. 1
No. 3
150 Ac.

SHANNON FARMS, INC.
D.B. 281, PAGE 400 (M.C.)
O.R. 52, PAGE 860 (C.C.)
THIRD TRACT
ORIG. 105.40 Ac.

MICHAEL K. BOERGER, ET AL
O.R. 121, PAGE 2311 (M.C.)
59.721 Ac.

482.864 Ac.
(2.482 Ac. IN IRWIN ROAD R/W)
(0.540 Ac. IN ROSEDALE ROAD R/W)

PARCEL No. 4
TRACT 4
260.24 Ac.

(255.852 Ac.)

LEGEND

- 5/8" IRON PIN (SET) WITH PLASTIC CAP STAMPED "McCARTY ASSOCIATES"
- 5/8" IRON PIN (FOUND)
- P.K. NAIL (FOUND)
- MAG NAIL (SET)
- SPIKE (FOUND)
- ⊠ SPIKE (FOUND) UNDER THE PAVEMENT
- ✕ RAILROAD SPIKE (SET)
- ✕ RAILROAD SPIKE (FOUND)
- 3/4" IRON PIPE (FOUND)
- MAG NAIL (FOUND)
- 1/2" IRON PIPE (FOUND)
- 1" IRON PIPE (FOUND)
- ⊠ CONCRETE RIGHT-OF-WAY MONUMENT (FOUND)
- ▲ McCARTY ASSOCIATES GEODETIC SURVEY MONUMENT "VAN NESS 2001", 5/8" IRON PIN (SET) WITH PLASTIC CAP STAMPED McCARTY TRAVERSE.
- - - WOVEN WIRE FENCE GENERALLY ON OR NEAR LINE UNLESS OTHERWISE SHOWN.
- - - V.M.S. LINE
- - - TRACT LINE
- (C.C.) CHAMPAIGN COUNTY
- (M.C.) MADISON COUNTY



SURVEY FOR
BRION WITHROW
GOSHEN TOWNSHIP, CHAMPAIGN COUNTY
PIKE TOWNSHIP, MADISON COUNTY, OHIO
V.M.S. Nos. 4199, 4749, 4750, 5645, 5751 & 6799

McCARTY ASSOCIATES, LLC
ARCHITECTS — ENGINEERS — SURVEYORS
213 N. HIGH ST., HILLSBORO, OHIO 45133 PH. 937-393-9971 FAX 937-393-2480
1515 ST. RT. 28 SUITE E, LOVELAND, OHIO 45140 PH. 513-722-0300 FAX 513-722-0500
304 E. MARKET ST., WASHINGTON C.H., OHIO 43160 PH. 740-335-3816 FAX 740-335-5828
www.mccartyassociates.com

DATE	SCALE	PROJECT NO.
DECEMBER 3, 2010	1"=300'	S10-126

MCCARTY ASSOCIATES, LLC

ARCHITECTS—ENGINEERS—SURVEYORS

HILLSBORO ————— WASHINGTON C.H. ————— LOVELAND

213 N. HIGH ST., HILLSBORO, OHIO 45133 PH 937-393-9971 FAX 937-393-2480

Michael L. McCarty, P.E., P.S.— Thomas E. Purtell, P.S.— Loren M. Puckert, P.E.— Eric N. Lutz, P.S.—Jerrold B. Bradley, AIA

File No. S10-126
November 30, 2010

LEGAL DESCRIPTION

Brion Withrow
Parcel 2
752.813 Acres Tract

Situated in the Townships of Goshen and Pike, Counties of Champaign and Madison, State of Ohio, being a part of V.M.S. Nos. 4199, 4749, 4750, 4942, 5444, 5645, 5751, and 5862, contains 144.527 acres from the original 204 acres "Parcel No.1, No. 1", contains all (196.988 acres) of the original 203 ½ acres "Parcel No.1, No. 2", contains all (150.726 acres) of the 150 acres "Parcel No.1, No. 3", contains all (0.411 acres) of the 1/3 acres "Parcel No. 1", contains 0.411 acres from the original 185.6482 acres "Parcel No. 4, Tract 1", contains 2.041 acres from the 260.24 acres "Parcel No. 4, Tract 4", contains all (46.593 acres) of the 47.801 acres "Parcel No. 2, Tract I", contains all (69.511 acres) of the 69.806 acres "Parcel No. 2, Tract II", contains 39.193 acres of the original 53.53 acres "Parcel No. 2, Tract III", contains 97.969 acres from the original 300 acres "Parcel No. 5, Tract I", contains all (3.988 acres) of the 4.16 acres "Parcel No. 5, Tract II", and contains all (0.455 acres) of the 0.51 acres "Parcel No. 5, Tract III", and as conveyed to Brion Withrow, Trustee of the Brion Withrow Trust Agreement dated December 3, 2008 and recorded in Official Record 476, Page 3146, of the Champaign County Recorder's Office and recorded in Official Record 244, Page 2415 the Madison County Recorder's Office, and being further bounded and described as follows:

Commencing at a 5/8" square iron pin (found) marking the centerline intersection of Irwin Road (County Road No. 26) and Rosedale Road (County Road No. 25 in Madison County and County Road No. 197 in Champaign County);

thence with the centerline of Irwin Road for the next five calls:

- (1) N 19°52'04" E, a distance of 1832.89 feet to a railroad spike (found);
- (2) N 21°22'53" E, a distance of 2502.24 feet to a ½" iron pipe (found);
- (3) N 21°21'51" E, a distance of 2236.25 feet to a P.K. nail (found);
- (4) N 11°07'50" E, a distance of 929.74 feet to a railroad spike (found);
- (5) N 10°27'31" E, a distance of 725.78 feet to a spike (found), said spike being a corner to the 59.721 acres tract as conveyed to Michael K. Boerger, et al (O.R. 121, Page 2311, Madison County) and marking the true point of beginning of the tract of land herein described;

thence Boerger's line N 80°29'52" W, passing a 5/8" iron pin (set) at 25.00 feet, a total distance of 584.26 feet to a 5/8" iron pin (found);

thence also Boerger's line S 58°40'07" W, passing a 5/8" iron pin (found) at 1326.74 feet, a total distance of 1635.07 feet to a 5/8" iron pin (set);

thence continuing with Boerger's line S 30°32'04" E, a distance of 29.48 feet to a point in the centerline of Little Darby Creek;

thence with the general centerline of Little Darby Creek for the next seventeen calls:

- (1) S 58°38'44" W, a distance of 685.65 feet to a point from which a 5/8" iron pin (set) on the northerly side of said creek bears N 40°06'04" W, a distance of 30.00 feet;
- (2) S 67°43'39" W, a distance of 136.66 feet to a point from which a 5/8" iron pin (set) on the northerly side of said creek bears N 29°50'59" W, a distance of 12.00 feet;
- (3) S 40°02'00" W, a distance of 142.19 feet to a point from which a 5/8" iron pin (set) on the northerly side of said creek bears N 41°03'37" W, a distance of 40.00 feet;
- (4) S 59°55'58" W, crossing the Madison County - Champaign County Line at 834.81 feet, a total distance of 1044.33 feet to a point from which a 5/8" iron pin (set) on the northerly side of said creek bears N 31°50'13" W, a distance of 20.00 feet;
- (5) S 63°05'42" W, a distance of 434.57 feet to a point from which a 5/8" iron pin (set) on the northerly side of said creek bears N 34°14'19" W, a distance of 20.00 feet;
- (6) S 46°28'26" W, a distance of 114.45 feet to a point from which a 5/8" iron pin (set) on the northerly side of said creek bears N 30°42'54" W, a distance of 30.00 feet;
- (7) S 65°33'29" W, a distance of 193.56 feet to a point from which a 5/8" iron pin (set) on the northerly side of said creek bears N 39°13'12" W, a distance of 15.00 feet;
- (8) S 39°27'02" W, a distance of 144.26 feet to a point from which a 5/8" iron pin (set) on the northerly side of said creek bears N 29°34'52" W, a distance of 50.00 feet;
- (9) S 79°17'20" W, a distance of 101.00 feet to a point from which a 5/8" iron pin (set) on the northerly side of said creek bears N 00°34'23" E, a distance of 25.00 feet;

- (10) S 57°18'28" W, a distance of 696.79 feet to a point from which a 5/8" iron pin (set) on the northerly side of said creek bears N 58°08'32" W, a distance of 40.24 feet;
 - (11) S 59°43'05" W, a distance of 675.88 feet to a point from which a 5/8" iron pin (set) on the northerly side of said creek bears N 44°34'27" W, a distance of 28.60 feet;
 - (12) S 44°49'20" W, a distance of 168.09 feet to a point from which a 5/8" iron pin (set) on the northerly side of said creek bears N 25°19'07" W, a distance of 53.05 feet;
 - (13) S 81°33'33" W, a distance of 144.58 feet to a point from which a 5/8" iron pin (set) on the northerly side of said creek bears N 55°58'27" W, a distance of 20.81 feet;
 - (14) S 59°55'07" W, a distance of 244.22 feet to a point from which a 5/8" iron pin (set) on the northerly side of said creek bears N 28°14'43" W, a distance of 44.95 feet;
 - (15) S 79°27'19" W, a distance of 112.28 feet to a point from which a 5/8" iron pin (set) on the northerly side of said creek bears S 63°39'59" W, a distance of 56.58 feet;
 - (16) S 14°47'16" W, a distance of 89.85 feet to a point from which a 5/8" iron pin (set) on the northerly side of said creek bears N 24°12'31" W, a distance of 67.73 feet;
 - (17) S 62°38'39" W, a distance of 69.28 feet to a point from which a 5/8" iron pin (set) on the southerly side of said creek bears S 28°48'17" E, a distance of 26.22 feet, said point being the northeasterly corner of the original 219 acres tract as conveyed to Michael K. Boerger, et ux (O.R. 340, Page 258 in Champaign County);
- thence with Boerger's northerly line S 62°30'56" W, a distance of 1715.62 feet to a 5/8" iron pin (set) in the

easterly line of the original 119.06 acres tract as conveyed to Linda L. McGuire (O.R. 017, Page 982, Champaign County);

thence with McGuire's line N 30°58'19" W, a distance of 2967.09 feet to a 5/8" iron pin (set) in the southeasterly right-of-way line of the former Delaware Branch of the Cleveland, Cincinnati, Chicago, and St. Louis Railway Company and The New York Central Railroad Company and conveyed as 11.74 miles strip of land to the Dayton Power and Light Company (D.B. 185, Page 196, Champaign County);

thence with the southeasterly line of the Dayton Power and Light Company and the southeasterly right-of-way of said former railroad N 48°19'01" E, a distance of 5968.82 feet to a 5/8" iron pin (set);

thence also with the southeasterly line of the Dayton Power and Light Company and the southeasterly right-of-way of said former railroad with a curve to the left having a radius of 11,509.20 feet, an arc length of 2077.74 feet, and a chord which bears N 43°08'43" E, a distance of 2074.92 feet to a 5/8" iron pin (set) at a bend in Van Ness Road (Township Road No. 243 in Champaign County and Township Road No. 140 in Madison County), said iron pin being the southwesterly corner of the 5.33 acres "Eighth Tract" as conveyed to Shannon Farms, Inc. (O.R. 52, Page 860, Champaign County, D.B. 281, Page 400, Madison County);

thence with the southerly line of Shannon Farms, Inc. and a line parallel and 17.5 feet north of the centerline of Van Ness Road S 81°44'58" E, a distance of 593.26 feet to a 5/8" iron pin (set) on the Champaign County - Madison County Line;

thence with the Champaign County - Madison County Line S 05°51'28" W, a distance of 35.03 feet to a 5/8" iron pin (set) in the southerly right-of-way line of Van Ness Road;

thence with the southerly right-of-way line of Van Ness Road parallel and 17.50 feet south of said road centerline S 81°45'08" E, a distance of 605.12 feet to a 5/8" iron pin (set) near an end post, said iron pin being a corner to the remaining lands of the original 27 acres "Fifth Tract" as conveyed to Shannon Farms, Inc. (O.R. 52, Page 860, Champaign County, D.B. 281, Page 400, Madison County);

thence with line of Shannon Farms, Inc. S 13°13'52" E, passing the corner to said original 27 acres "Fifth Tract" and continuing with line of a 1.56 acres "Seventh Tract" as conveyed to Shannon Farms, Inc. (O.R. 52, Page 860, Champaign County, D.B. 281, Page 400, Madison County), a distance of 1544.17 feet to a 5/8" iron pin (set);

thence with line of Shannon Farms, Inc. S 68°24'28" E, passing the corner to the 1.56 acres "Seventh Tract" and continuing with the line of the original 10 acres, 150 poles "Sixth Tract" as conveyed to Shannon Farms, Inc. (O.R. 52, Page 860, Champaign County, D.B. 281, Page 400, Madison County), a distance of 520.47 feet to a 5/8" iron pin (set) by a corner post;

thence with line of Shannon Farms, Inc. S 31°31'08" W, a distance of 175.48 feet to a 5/8" iron pin (set);

thence continuing with line of Shannon Farms, Inc. S 31°13'56" E, passing a 5/8" iron pin (set) on the south side of Little Darby Creek at 80.50 feet, passing the corner of said original 10 acres, 150 poles "Sixth Tract" and continuing with westerly line of the original 105.40 acres "Third Tract" as conveyed to Shannon Farms, Inc. (O.R. 52, Page 860, Champaign County, D.B. 281, Page 400, Madison County), a total distance of 1905.42 feet to a 5/8" iron pin (set);

thence with the southerly line of Shannon Farms, Inc.
S 80°29'52" E, passing a 5/8" iron pin (set) at 585.55 feet, a
total distance of 610.55 feet to a Mag nail (set) in the
centerline of Irwin Road;

thence with the centerline of Irwin Road S 10°22'09" W, a
distance of 30.00 feet to the true point of beginning,
containing 752.813 acres of land of which 572.542 acres are in
Champaign County and 180.271 acres are in Madison County.

The above description contains 50.153 acres in V.M.S. No.
4199, 131.174 acres in V.M.S. No. 4749, 221.890 acres in V.M.S.
No. 4750, 4.862 acres in V.M.S. No. 4942, 58.998 acres in V.M.S.
No. 5444, 2.426 acres in V.M.S. No. 5645, 30.022 acres in V.M.S.
No. 5751, 253.288 acres in V.M.S. No. 5862.

The above description contains 0.017 acres within the
right-of-way of Irwin Road in Madison County, and contains 1.367
acres within the right-of-way of Van Ness Road in Champaign
County.

Subject to all legal easements and rights-of-way of record.

Bearings are based upon the Grid Azimuth (AZ. 276° 10' 13.0")
between National Geodetic Survey Monuments "A 38 RESET" and "CHP
OUT" and derived from GPS observations taken November 11, 2010,
utilizing the Trimble ODOT CORS VRS (Virtual Reference System).

Land surveyed in November 2010, under the direction of Thomas
E. Purtell, Registered Professional Surveyor No. 6519, the survey
plat of which is referred to as Project No. S10-126 on file in the
office of McCarty Associates, LLC, Hillsboro, Ohio.

All iron pins (set) are 5/8" diameter with 1-1/4" diameter
plastic caps stamped "McCARTY ASSOCIATES".

Thomas E. Purtell

Thomas E. Purtell, P.S. 6519

